

Social expenditure

	1990	1991	1992	1993	1994	1995	1996	1997	1998	1999	2000	1990	2000	
<i>DKK millions</i>													<i>Per cent</i>	
Social expenditure, total	230 979	249 233	261 867	279 788	308 633	316 448	324 723	330 181	339 728	351 847	358 445	100	100	
Expenditure in connection with:														
Sickness	45 383	48 952	50 579	52 685	54 321	56 466	57 602	59 820	65 571	68 905	68 738	19.6	19.2	
Disability	20 210	21 510	22 424	23 817	29 351	33 545	34 782	35 781	39 261	42 603	43 466	8.7	12.1	
Occupational injuries	1 863	1 972	1 991	2 648	1 626	-	-	-	-	-	-	0.8	-	
Old age ¹	84 425	88 643	92 269	96 141	114 122	118 906	126 014	129 790	130 034	133 678	138 098	36.6	38.5	
Survivors	190	196	183	193	194	193	189	188	182	173	147	0.1	0.0	
Families	28 022	29 594	31 688	33 377	37 933	39 128	40 345	41 669	44 080	45 789	47 657	12.1	13.3	
Unemployment and employment	35 390	40 806	43 933	50 543	50 430	46 677	44 878	41 733	39 626	39 241	38 251	15.3	10.7	
Housing	5 412	6 105	6 692	7 265	7 530	7 738	7 804	8 086	8 396	8 553	8 574	2.3	2.4	
Other benefits	10 084	11 455	12 110	13 117	13 125	13 795	13 109	13 153	12 638	12 905	13 514	4.4	3.8	
<i>Per cent of gross domestic product</i>														
Social expenditure, total	28.8	29.9	30.3	31.9	32.9	32.2	31.4	30.4	29.9	29.7	28.0			
Cash benefits	18.0	18.6	18.9	20.1	21.1	20.5	19.9	19.0	18.1	17.7	17.0			
Benefits in kind	10.0	10.5	10.6	11.0	10.8	10.8	10.7	10.7	10.9	11.2	10.2			
Administration	0.8	0.8	0.8	0.8	0.9	0.9	0.8	0.8	0.8	0.8	0.8			
Social expenditure at constant prices														
<i>DKK millions at 2000 prices</i>														
Social expenditure, total	285 534	300 808	309 582	326 717	353 253	354 791	356 594	354 810	358 420	362 254	358 445			
Cash benefits	183 448	192 233	197 936	211 498	233 701	232 219	231 563	226 958	223 659	222 386	223 686			
Benefits in kind	102 099	108 590	111 636	115 204	119 547	122 583	125 040	127 849	134 767	139 856	134 759			
<i>DKK per capita at 2000 prices</i>														
Social expenditure, total	55 544	58 364	59 863	62 965	67 852	67 796	67 356	66 683	67 693	68 068	67 129			
of which cash benefits	35 684	37 296	38 275	40 762	44 889	44 373	43 738	42 655	42 166	41 788	41 892			
Financing														
<i>DKK millions</i>														
Received, total	261 544	278 827	296 544	315 793	353 710	358 533	366 516	374 558	387 932	401 919	412 733	100	100	
Central government ²	120 282	126 831	135 137	144 570	150 249	133 736	126 780	121 112	117 621	114 728	111 448	46.0	27.0	
Local government ²	89 281	99 957	104 261	110 194	115 345	117 100	122 281	128 918	139 255	147 178	150 444	34.1	36.5	
Employers	20 558	19 990	20 327	21 480	35 192	36 303	37 624	32 837	34 643	37 171	38 155	7.9	9.2	
Insured	13 765	13 692	13 683	14 829	31 326	48 905	56 425	67 722	71 474	77 252	84 696	5.3	20.5	
Interest income ÷ interest payments	17 658	18 357	18 609	21 656	21 598	22 490	23 406	23 969	24 938	25 589	27 989	6.8	6.8	
Received, total ÷ social expenditure, total	30 564	29 594	30 147	32 935	45 077	42 085	41 794	44 339	48 144	50 072	54 288			
of which administration ³	6 835	6 914	7 275	7 470	8 749	9 007	8 907	9 069	9 523	10 111	10 515			

Note: As from 1991 and 1992 the statistics have been revised (and have been subject to the first phase of linking to the general government sector in the national accounts.) Consequently, there are minor differences between the previously published 1991 figures and the revised 1991 figures.

¹ Including ordinary and increased ordinary retirement pension^a and partial pension.

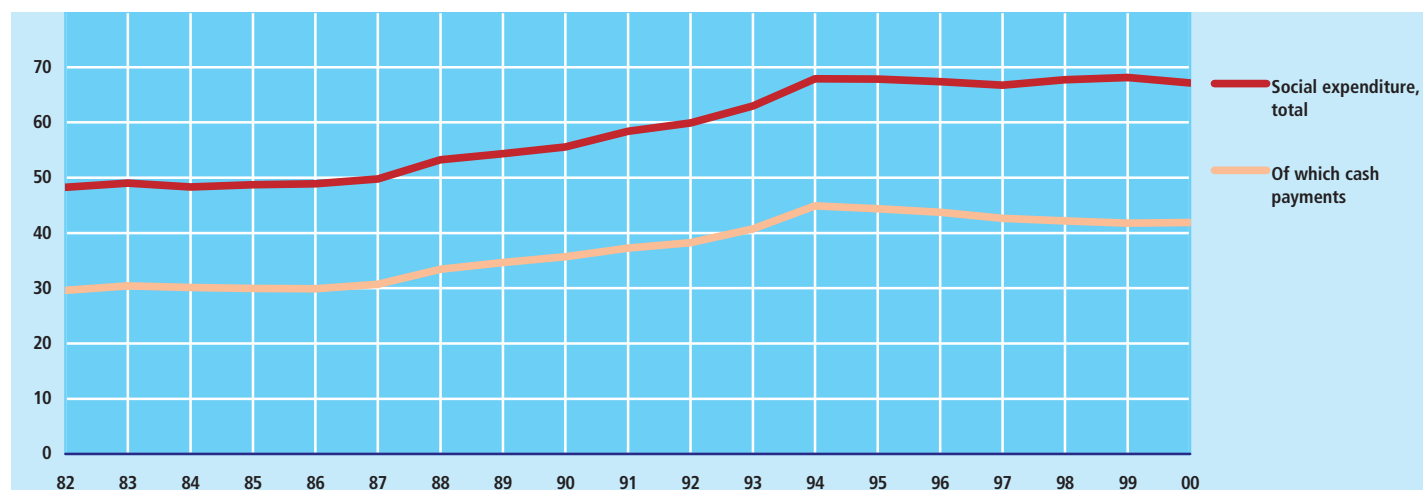
² Central and local government expenditure on pensions and other benefits for own staff members are included as employers' financing social benefits.

³ Includes administrative expenditure which can be distinguished from other current expenditure.

 New figures are expected to be published in December 2002.

Social expenditure per inhabitant (2000 prices)

DKK thousands



Transfer payments^a

	1990	1991	1992	1993	1994	1995	1996	1997	1998	1999	2000	1990	2000
<i>Persons in thousands</i>												<i>Per cent</i>	
Recipients, total	2 151	2 180	2 236	2 309	2 272	2 330	2 302	2 278	2 234	2 214	2 202	100.0	100.0
Dominant benefit^b													
Temporary	1 035	1 049	1 096	1 156	1 131	1 165	1 115	1 080	1 028	1 014	1 021	48.1	46.4
Permanent	1 116	1 131	1 140	1 153	1 141	1 165	1 187	1 198	1 206	1 199	1 181	51.9	53.6
Sex													
Men	978	994	1 022	1 065	1 036	1 038	1 030	1 014	994	990	976	45.5	44.3
Women	1 173	1 186	1 214	1 244	1 236	1 292	1 272	1 264	1 240	1 224	1 226	54.5	55.7
Age													
18-24 years	235	229	233	237	227	206	185	168	151	141	131	10.9	5.9
25-39 years	491	510	534	561	546	582	571	558	538	528	520	22.8	23.6
40-59 years	434	442	466	502	503	542	547	545	535	531	541	20.2	24.6
60-66 years	237	238	241	245	237	240	244	248	253	259	263	11.0	11.9
67 years and over	755	760	762	764	760	760	754	759	757	755	746	35.1	33.9
<i>Whole-year recipients in thousands</i>													
Total	1 475	1 521	1 554	1 618	1 691	1 690	1 668	1 647	1 616	1 590	1 575	100.0	100.0
Old-age pensioners	700	704	707	712	709	713	705	711	711	710	704	47.5	44.7
Transfer payments to persons aged 18-66													
Unemployment benefits	211	230	242	274	266	233	196	173	146	126	125	14.3	7.9
Social assistance benefits and rehabilitation													
Sickness/maternity benefits	137	158	167	177	139	120	117	117	114	115	117	9.3	7.4
Activation	74	69	71	72	74	79	83	86	85	86	91	5.0	5.8
Leave benefits	63	53	67	71	65	71	70	...	4.4
Early retirement pay and transitional allowance	51	80	63	44	37	32	25	...	1.6
Early retirement pension	101	104	110	116	122	140	167	171	186	179	180	6.8	11.4
Early retirement pension	250	254	256	266	266	273	270	274	273	270	263	16.9	16.7
<i>DKK millions</i>												<i>Per cent</i>	
Amounts paid out, total	114 115	123 191	129 581	140 120	148 027	154 576	154 954	147 279	150 709	150 510	153 273	100.0	100.0
Temporary, total	42 136	47 212	50 799	56 824	60 410	61 964	58 460	53 807	49 872	47 808	49 202	36.9	32.1
Unemployment benefits	25 630	28 853	31 701	36 651	36 215	29 640	25 319	22 659	18 245	16 569	16 875	22.5	11.0
Sickness benefits	4 843	4 378	4 486	4 713	4 773	5 258	6 073	6 396	6 724	6 663	7 450	4.2	4.9
Maternity benefits	3 894	4 013	4 383	4 518	4 573	4 417	4 378	4 395	4 430	4 563	4 707	3.4	3.1
Social assistance benefits	6 233	8 510	8 578	9 120	10 738	9 603	9 403	9 307	8 985	8 488	9 010	5.5	5.9
Rehabilitation	1 536	1 458	1 651	1 822	2 401	2 039	2 209	2 409	2 787	1 828	1 606	1.3	1.0
Activation, local government	1 709	2 642	3 178	3 352	3 627	4 139	4 524	...	3.0
Activation, central government	829	1 694	1 759	1 979	2 739	2 718	...	1.8
Leave benefits	7 536	6 205	3 530	3 095	2 820	2 312	...	1.5
Permanent, total	71 979	75 980	78 781	83 296	87 618	92 611	96 494	93 472	100 837	102 702	104 071	63.1	67.9
Old-age pension ^c	40 729	43 082	44 529	46 356	50 099	51 701	52 283	52 384	53 320	54 369	55 459	35.7	36.2
Early retirement pension ^c	18 924	19 790	20 391	21 762	25 171	26 503	26 937	27 300	27 936	28 068	27 760	16.6	18.1
Civil servants' pension	3 624	3 803	4 127	4 156	3.2	...
Early retirement pay and transitional allowance	8 702	9 304	9 735	11 022	12 347	14 407	17 274	13 789	19 581	20 265	20 852	7.6	13.6

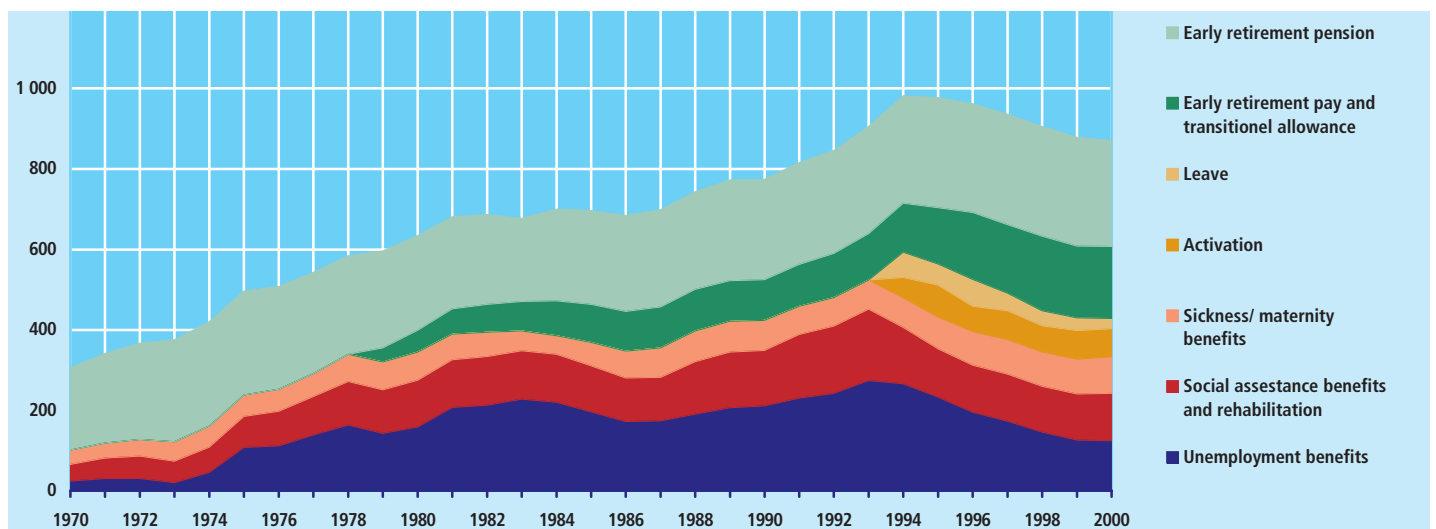
Note 1: Figures on temporary benefits are influenced by changes in legislation, particularly legislation concerning sickness and maternity benefits.

Note 2: As a result of different methods of calculation, the figures are not directly comparable with the table for total income transfers to households in the Public Finance section.

^a New figures are expected to be published at the end of July 2002 (concerning persons) and December 2002 (concerning amounts).

Recipients aged 18-66 of transfer payments

Whole-year recipients in thousands



Recipients of transfer payments^a (converted to whole-year recipients)

	1990	1991	1992	1993	1994	1995	1996	1997	1998	1999	2000
<i>Per cent</i>											
Transfer recipients in relation to the number of employed persons	59	61	63	67	70	69	67	65	62	59	58
Transfer recipients aged 18-66 in relation to the number of employed persons	31	33	34	37	40	40	39	36	34	33	32
Transfer recipients in relation to the population	29	30	30	31	33	32	32	31	31	30	30
Transfer recipients in relation to the population aged 18-66	23	24	25	27	29	29	28	27	26	25	24

^a New figures are expected to be published at the end of July 2002.

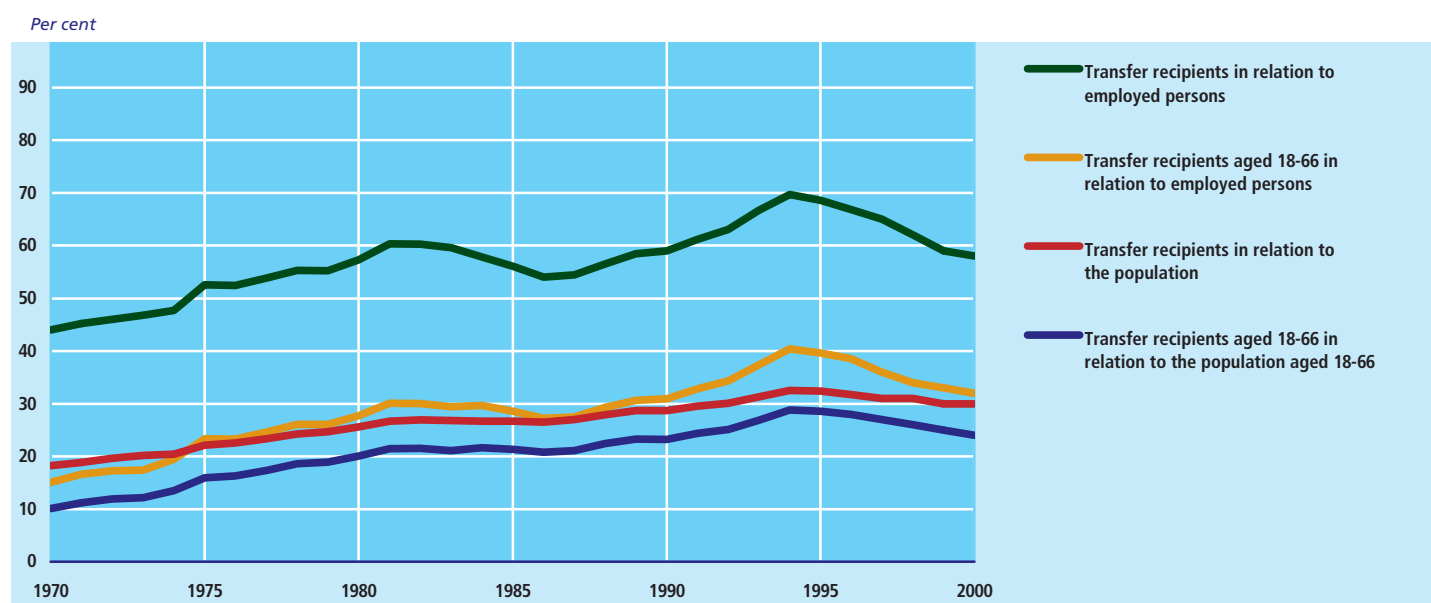
Transfer recipients^a aged 18-66 by level of education

	1990	1991	1992	1993	1994	1995	1996	1997	1998	1999	2000	1990	2000
<i>Persons in thousands</i>												<i>Per cent</i>	
Total	774	816	847	906	982	977	963	936	888	862	852	100.0	100.0
No vocational education or not stated	516	532	541	569	621	595	583	571	539	504	493	66.7	57.9
Apprenticeship training	199	218	232	257	263	276	276	276	262	261	259	25.7	30.4
Short-cycle higher education ^a	22	24	25	27	31	36	36	32	29	23	24	2.8	2.8
Medium-cycle higher education ^a	26	29	33	35	42	47	47	39	39	53	56	3.4	6.6
Bachelors ^a	3	3	...	0.4
Long-cycle higher education ^{a1}	12	14	15	16	24	23	22	19	18	18	18	1.6	2.1

1 Up to and including 1998 incl. bachelor.

^a New figures are expected to be published at the end of July 2002.

Recipients of transfer payments^a (converted to whole-year recipients)



Health insurance

	1992	1993	1994	1995	1996	1997	1998	1999	2000
<i>Average number of consultations per capita</i>									
Total	7.8	9.1	9.4	9.7	9.7	9.9	10.1	10.2	10.4
General medical care	5.6	5.4	5.4	5.6	5.6	5.8	5.9	5.9	6.0
Ear specialist care	0.2	0.2	0.2	0.2	0.2	0.2	0.2	0.2	0.2
Eye specialist care	0.2	0.2	0.2	0.2	0.2	0.2	0.2	0.2	0.2
Other specialist medical care	0.5	0.5	0.6	0.5	0.5	0.5	0.5	0.5	0.5
Dental care	1.0	0.8	0.8	0.8	0.8	1.0	1.0	1.0	1.0
Other services ¹	0.3	2.0	2.1	2.3	2.3	2.4	2.5	2.6	2.6

Note 1 From 1993 consultations with physiotherapists are included. This is the main reason for the increasing number of consultations from 1992 to 1993.

Note 2: From 1993 histopathological examinations are transferred from "Other specialist medical care" to "Other services". Child psychiatry is transferred from "Other services" to "Other specialist medical care".

¹ Including regional laboratories, chiropractic, chiropody, physiotherapy and psychology.

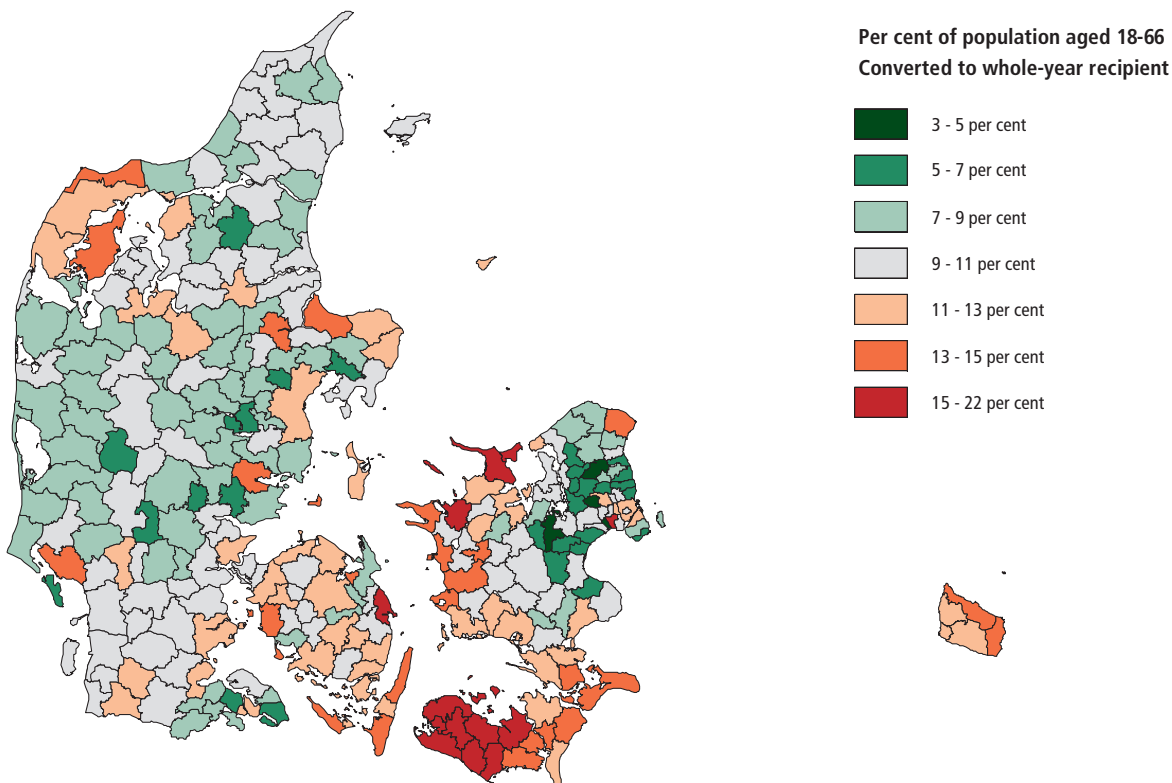
^a New figures are expected to be published in August 2002.

Recipients aged 18-66 of transfer payments by country of origin

Per cent of the population group	1990	1995	1996	1997	1998	1999	2000
Immigrants							
Total	55.0	60.0	59.8	59.9	58.1	57.6	56.7
Unemployment benefits	19.4	17.2	14.7	13.3	11.9	10.5	9.9
Sickness benefits	4.7	3.6	3.9	4.2	4.4	4.7	5.4
Maternity benefits	2.0	1.6	1.6	1.8	1.8	1.9	2.1
Social assistance benefits	15.1	19.5	19.9	20.1	19.2	17.5	17.9
Rehabilitation	7.0	2.0	2.0	2.3	2.6	4.1	3.2
Activation, local government	...	2.8	3.8	4.5	5.0	5.6	6.1
Activation, central government	...	1.0	1.9	2.1	1.7	2.3	2.0
Leave benefits	...	4.2	3.3	2.5	2.3	1.8	1.4
Early retirement pension	5.4	5.8	5.7	6.0	6.3	6.2	6.1
Early retirement pay and transitional allowance	1.4	2.3	3.0	2.9	2.9	2.8	2.7
Descendants							
Total	43.5	44.3	43.6	42.3	39.9	38.6	37.5
Unemployment benefits	14.1	13.8	13.6	12.0	10.6	9.3	8.9
Sickness benefits	5.0	4.3	4.5	5.1	5.2	5.6	5.9
Maternity benefits	3.7	2.3	2.5	2.6	2.6	2.8	2.9
Social assistance benefits	13.8	7.8	7.0	7.2	7.3	8.1	8.1
Rehabilitation	1.4	0.8	0.8	1.0	0.9	0.9	0.8
Activation, local government	...	7.6	7.3	6.8	6.1	5.0	4.8
Activation, central government	...	0.5	1.0	1.5	1.4	1.2	1.0
Leave benefits	...	2.9	2.6	2.1	1.9	1.9	1.6
Early retirement pension	4.6	3.7	3.5	3.4	3.3	3.2	3.2
Early retirement pay and transitional allowance	0.9	0.7	0.8	0.7	0.7	0.6	0.5
Other population							
Total	38.9	45.4	44.4	43.3	41.3	40.6	40.5
Unemployment benefits	13.7	13.2	11.9	10.9	9.7	8.9	8.5
Sickness benefits	6.3	6.6	6.8	7.2	7.3	7.5	8.7
Maternity benefits	2.6	2.8	2.7	2.7	2.7	2.8	2.9
Social assistance benefits	5.5	3.2	2.9	2.8	2.6	2.5	2.5
Rehabilitation	0.6	0.6	0.6	0.6	0.7	0.7	0.8
Activation, local government	...	2.0	1.9	1.7	1.6	1.6	1.6
Activation, central government	...	0.6	1.0	1.1	1.0	1.2	1.0
Leave benefits	...	3.8	3.2	2.7	2.3	2.1	1.5
Early retirement pension	7.5	8.3	8.2	8.3	7.9	7.8	7.5
Early retirement pay and transitional allowance	2.7	4.3	5.2	5.3	5.5	5.5	5.5

➤ New figures are expected to be published December 2002.

Recipients of social assistance benefits, rehabilitation and early retirement pension by municipalities. 2000



Assistance to children and young people

	1990	1991	1992	1993	1994	1995	1996	1997	1998	1999	2000
<i>Number as of 31 December</i>											
Placement outside own home.....	14 773	14 104	13 753	12 087	11 850	11 872	11 631	11 499	12 129	12 672	13 641
<i>By sanction provision:</i>											
With consent.....	13 990	13 210	12 955	11 230	10 916	10 856	10 548	10 364	10 891	11 438	12 353
Without consent.....	767	882	783	846	928	1 009	1 075	1 130	1 233	1 229	1 274
Temporary placement.....	16	12	15	11	6	7	8	5	5	5	14
<i>By type of place:</i>											
Private family.....	6 177	5 613	5 697	5 044	5 102	5 058	4 922	5 023	5 370	5 746	6 163
Residential institution.....	3 819	3 600	3 485	3 250	3 249	3 280	3 250	3 097	3 166	3 190	3 371
Socio-educational residence.....	932	981	958	1 076	1 068	1 089	1 133	1 202	1 386	1 595	1 930
Boarding school, etc.....	2 846	2 938	2 754	1 913	1 600	1 613	1 558	1 500	1 556	1 417	1 354
Own room, etc.....	911	887	776	739	770	770	713	613	593	667	760
Other ¹ and not stated.....	88	85	83	65	61	62	55	64	58	57	63
Preventive measures	2 341	1 876	1 638	5 463	6 928	7 349	8 021	8 646	9 607	10 286	11 361
Appointment of personal adviser.....	2 341	1 876	1 638	1 681	1 698	1 474	1 396	1 427	1 369	1 260	1 263
Fixed contact person.....	•	•	•	•	•	•	•	•	275	617	1 058
Relief stay for children/young people, with stay in their own home.....	•	•	•	2 948	3 981	4 476	5 120	5 638	6 226	6 548	6 943
Support for stay at boarding school/ continuation school.....	•	•	•	911	1 348	1 478	1 611	1 715	1 923	2 071	2 368
Receiving assistance, total (net)	16 547	15 532	14 947	17 214	18 461	18 885	19 370	19 876	21 471	22 577	24 589

Note: Owing to changes in legislation, figures for 1993 are not strictly comparable with earlier years. ¹ In a hospital or on board a ship.

➤ New figures are expected to be published in October 2002.

Sickness and maternity benefits paid by local governments

	1991	1992	1993	1994	1995	1996	1997	1998	1999	2000	2001
<i>DKK millions</i>											
Expenditure on benefits	9 346	9 833	10 384	10 091	10 851	11 528	11 921	12 270	12 184	13 087	14 190
Sickness benefits, total.....	5 268	5 391	5 850	5 575	6 156	6 928	7 297	7 609	7 432	8 217	9 262
Men.....	2 806	2 854	3 082	2 964	3 241	3 548	3 658	3 764	3 722	4 012	4 389
Women.....	2 463	2 538	2 768	2 611	2 915	3 379	3 639	3 844	3 710	4 205	4 873
Maternity benefits, total ¹	4 078	4 442	4 534	4 516	4 695	4 600	4 624	4 661	4 752	4 870	4 928
Men.....	191	215	216	216	231	220	222	254	292	311	323
Women.....	3 888	4 227	4 318	4 300	4 465	4 381	4 402	4 407	4 460	4 559	4 605
<i>Thousands</i>											
Benefits received in weeks², total	4 208	4 303	4 463	4 468	4 721	4 923	5 044	4 990	4 882	5 177	5 481
Sickness benefits in weeks, total.....	2 364	2 344	2 505	2 482	2 666	2 938	3 063	3 052	2 953	3 247	3 575
Men.....	1 208	1 193	1 275	1 281	1 354	1 453	1 488	1 463	1 432	1 516	1 615
Women.....	1 156	1 151	1 230	1 200	1 312	1 486	1 575	1 590	1 520	1 731	1 960
Maternity benefits in weeks, total ¹	1 844	1 959	1 958	1 986	2 055	1 985	1 981	1 938	1 929	1 930	1 906
Men.....	78	86	84	87	90	85	85	93	104	107	109
Women.....	1 766	1 873	1 875	1 899	1 965	1 900	1 896	1 845	1 824	1 823	1 797
<i>Number</i>											
Recipients³ of benefits, total	448 799	457 566	480 598	485 158	510 278	514 539	524 118	525 988	529 267	558 385	573 932
Recipients of sickness benefits, total.....	330 495	331 718	355 360	357 842	378 940	388 147	399 328	401 761	401 799	430 169	447 120
Men.....	182 218	182 915	194 012	199 009	210 783	213 201	218 687	217 730	218 557	222 489	225 055
Women.....	148 277	148 803	161 348	158 833	168 157	174 946	180 641	184 031	183 242	207 680	222 065
Recipients of maternity benefits, total ¹	118 304	125 848	125 238	127 316	131 338	126 392	124 790	124 227	127 468	128 216	126 812
Men.....	35 462	38 515	37 427	38 604	41 003	38 835	39 138	39 934	44 343	45 559	45 372
Women.....	82 842	87 333	87 811	88 712	90 335	87 557	85 652	84 293	83 125	82 657	81 440

Note: The employers' period for the employers is 2 weeks. Until 1 January 1999 the employer's period for the self-employed was 3 weeks, then 2 weeks. Before 2000 local governments only paid reimbursement of sickness benefits paid out by private employers after the employers' period. From 2000 both private and public employers get reimbursement from the local government.

¹ Included in connection with adoption and pregnancy.

² Compiled as net figures as a social case is only counted once, regardless of whether payments are made to the insured person as well as to the employer as a refund of the wages and salaries paid.

³ The net number persons, i.e. when a person changes status from one group to another, the person is counted once e.g. from being pregnant to giving birth. A person having received both maternity benefits and sickness benefits will, however, be counted in both groups.

➤ New figures are expected to be published in February 2003.

Housing subsidies in December (non pensioners)

	1991	1992	1993	1994	1995	1996	1997	1998	1999	2000	2001
<i>Number</i>											
Recipients, total	162 398	173 297	181 243	181 711	179 167	172 948	171 499	169 242	169 735	173 654	175 972
Ordinary flats	158 258	168 354	176 823	177 440	174 875	168 660	166 761	164 334	164 967	169 670	172 565
Rehousing, improvements, shared housing.....	4 140	4 951	4 420	4 271	4 292	4 288	4 738	4 908	4 768	3 984	3 407
<i>DKK</i>											
Average rent allowance per household.....	869	882	904	879	899	934	948	962	966	951	980
Ordinary flats	874	887	909	883	902	936	952	967	971	955	982
Rehousing, improvements, shared housing	690	684	712	737	782	837	815	786	784	805	834

☞ New figures are expected to be published in February 2003.

Housing allowance in December (pensioners)

	1991	1992	1993	1994	1995	1996	1997	1998	1999	2000	2001
<i>Number</i>											
Recipients, total	289 925	301 324	315 086	325 007	332 002	326 586	330 455	333 876	333 431	330 738	327 158
Tenants.....	265 908	275 231	283 802	290 763	295 319	297 005	299 689	302 258	300 509	298 266	295 741
Owners.....	6 411	6 462	9 795	11 032	12 232	4 387	4 050	3 749	3 508	3 244	3 011
Occupants in jointly owned blocks of flats.....	17 606	19 631	21 489	23 212	24 451	25 194	26 716	27 869	28 165	27 964	27 212
Shared housing.....	-	-	-	-	-	-	-	-	1 249	1 264	1 194
<i>DKK</i>											
Average rent allowance per household.....	1 332	1 399	1 448	1 488	1 510	1 564	1 608	1 658	1 696	1 710	1 766
Tenants.....	1 374	1 448	1 516	1 569	1 602	1 637	1 685	1 739	1 780	1 794	1 853
Owners.....	1 121	1 140	838	697	621	1 212	1 213	1 224	1 225	1 225	1 265
Occupants in jointly owned blocks of flats.....	780	806	835	851	854	776	804	836	872	890	902
Shared housing.....	-	-	-	-	-	-	-	-	1 310	1 313	1 368

☞ New figures are expected to be published in February 2003.

Social assistance benefits

	1991	1992	1993	1994	1995	1996	1997	1998	1999	2000	2001
	<i>Number of families</i>			<i>Number of persons</i>							
Families¹ receiving social assistance benefits, total¹	346 571	359 235	363 694	387 545	361 125	358 501	357 437	355 276	313 374	312 092	314 110
Maintenance benefits, etc.	268 379	272 268	281 007	221 192	195 625	190 447	189 422	186 383	178 406	173 350	166 245
Educational grants, etc.	55 969	65 657	68 455	70 441	66 103	68 548	74 859	79 518	76 381	74 644	70 899
Other special benefits	186 622	187 891	166 075	197 668	172 646	172 500	171 641	167 921	122 600	122 392	127 665
Persons in training schemes receiving social assistance benefits	•	•	•	90 493	99 450	98 577	95 411	95 302	98 074	101 772	100 533
<i>DKK millions</i>											
Social assistance benefits paid, total²	11 935	12 316	12 967	16 902	16 242	16 761	17 342	17 861	18 885	19 770	20 364
Maintenance benefits, etc.	7 999	8 073	8 564	10 387	9 174	8 971	8 923	8 601	8 165	8 190	8 277
Educational grants, etc.	2 389	2 733	3 297	3 139	2 963	3 057	3 279	3 779	4 685	4 937	4 874
Other special benefits	1 547	1 510	1 106	1 474	1 413	1 549	1 823	1 899	2 021	2 176	2 446
Persons in training schemes receiving social assistance benefits	•	•	•	1 912	2 692	3 185	3 317	3 583	4 014	4 466	4 767
<i>Per cent</i>											
Families ¹ receiving social assistance benefits as percent of all families ³	12	12	12	11	11	10	10	10	9	9	9

Note: From 1994, recipients of social assistance benefits are compiled as the number of persons. Consequently, the number of recipients in 1994 are not strictly comparable with the family-based statistics of earlier years.

¹ The total number of families are lower than the total sum of each type of benefit as the same family/person may have received several types of benefit.

² From 1994, maintenance benefits etc. were increased and subjected to taxation (special support under Section § 37a is, however, tax free). As a result of this grossing-up of maintenance benefits, etc., expenditure from 1994 is not immediately comparable with expenditure in previous years. Expenditure is compiled for 273 municipalities in 1991 and for 269 in 1992 and 1993, corresponding to 99.8 pct., 99.3 pct. and 99.4 pct. of all municipalities.

³ From 1994 compiled as persons receiving social assistance benefits as a pct. of the population aged 18-66.

☞ New figures are expected to be published in June 2003.

Recipients aged 50-66 of early retirement pension^a (converted to whole-year recipients)

	1990	1991	1992	1993	1994	1995	1996	1997	1998	1999	2000
<i>Per cent of the population in selected age groups</i>											
Total	21	21	21	21	20	20	19	19	18	18	17
50-54 years.....	11	11	11	11	11	11	11	11	11	10	10
55-59 years.....	18	18	18	18	18	18	17	17	17	16	15
60-62 years.....	26	26	26	26	26	25	25	24	23	22	21
63-66 years.....	36	37	36	36	36	35	34	34	33	32	30
Men	15	15	15	15	15	15	15	15	14	14	13
50-54 years.....	9	9	9	10	10	10	9	9	9	9	9
55-59 years.....	14	14	14	15	14	14	14	14	14	14	13
60-62 years.....	19	19	19	20	19	19	19	19	18	17	17
63-66 years.....	23	24	24	24	24	24	23	23	24	23	22
Women	27	27	26	26	25	25	24	23	22	21	20
50-54 years.....	13	13	13	13	13	13	13	13	12	12	12
55-59 years.....	22	22	22	22	21	21	20	20	20	19	18
60-62 years.....	33	32	33	32	32	31	31	29	28	26	25
63-66 years.....	47	48	47	47	46	46	44	43	42	40	38

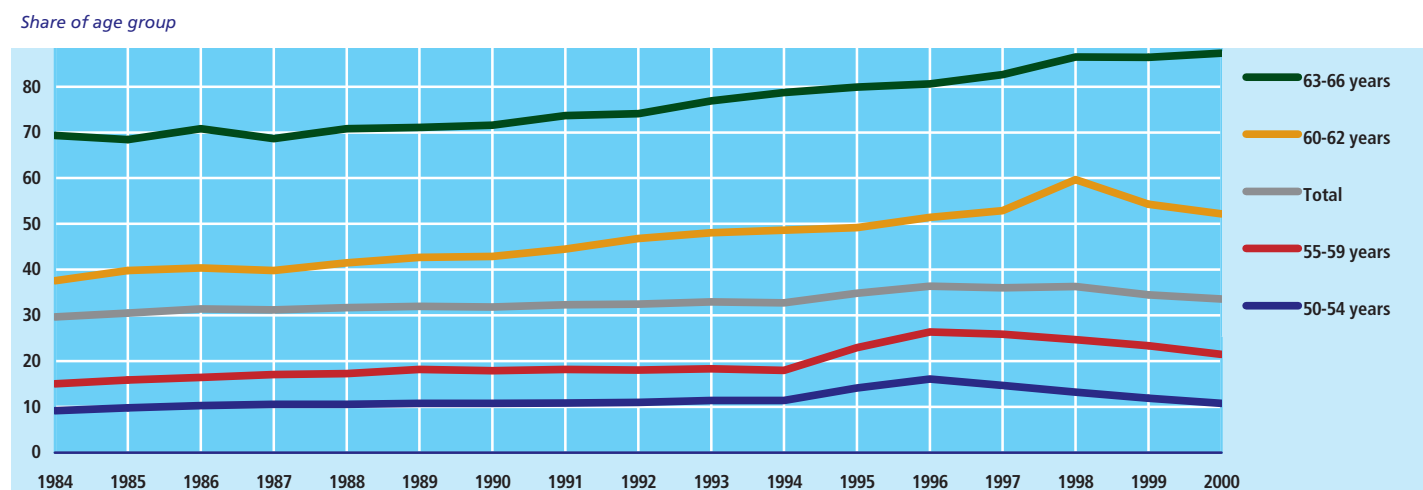
^a New figures are expected to be published at the end of July 2002.

Recipients of early retirement pay and transitional allowance (converted to whole-year recipients)

	1990	1991	1992	1993	1994	1995	1996	1997	1998	1999	2000
<i>Per cent of the population in selected age groups</i>											
Total	11	11	12	12	13	15	17	17	18	17	17
50-54 years.....	•	•	•	•	1	3	5	4	2	1	1
55-59 years.....	•	•	•	•	2	5	9	9	8	7	6
60-62 years.....	17	19	21	22	23	24	27	29	36	32	31
63-66 years.....	36	37	38	41	42	45	47	49	53	55	57
Men	12	13	13	13	14	15	16	16	17	16	15
50-54 years.....	•	•	•	•	0	2	3	2	2	1	0
55-59 years.....	•	•	•	•	1	3	6	6	5	4	4
60-62 years.....	18	19	21	23	23	23	26	27	34	29	27
63-66 years.....	43	45	45	48	49	51	52	54	58	58	59
Women	9	10	10	11	12	15	18	18	19	18	18
50-54 years.....	•	•	•	•	1	4	7	5	3	2	1
55-59 years.....	•	•	•	•	3	7	12	12	11	10	9
60-62 years.....	16	18	20	21	22	24	28	30	39	36	36
63-66 years.....	29	30	32	34	36	39	41	44	49	52	55

^a New figures are expected to be published at the end of July 2002.

Recipients aged 50-66 of early retirement pension^a, early retirement pay and transitional allowance (converted to whole-year recipients)



Institutions for children and young people

	1991	1992	1993	1994	1995	1996	1997	1998	1999	2000	2001
<i>Number</i>											
Children in day-care institutions, etc.											
Total	325 089	349 324	377 095	404 938	417 712	447 254	480 746	518 571	541 383	548 422	554 393
Day-care	66 183	71 422	77 183	76 046	68 437	74 884	78 802	82 839	82 536	81 327	79 119
Nurseries	24 520	23 647	22 952	22 751	21 460	21 142	20 880	20 456	19 950	19 579	18 944
Kindergartens	92 423	92 947	97 466	101 966	105 234	109 866	115 783	120 074	126 375	126 906	128 257
Age-integrated institutions	60 180	67 680	69 873	85 942	89 032	97 377	103 514	111 798	119 656	121 546	120 877
Recreation centres	32 189	32 643	29 818	28 380	32 096	31 150	35 973	39 161	37 459	37 356	34 294
Outside school-hours care	49 594	60 985	79 803	89 853	101 453	112 835	125 794	144 243	155 407	161 708	172 902
<i>Number per 100 in selected age groups</i>											
Total 0-13 years	40.1	42.9	45.9	48.8	49.5	51.6	54.4	57.6	59.1	59.2	59.1
0-2 years	47.6	48.7	49.8	50.2	46.0	48.2	51.2	55.0	54.6	56.1	56.5
3-5 years	77.2	79.3	80.0	83.4	83.4	85.0	87.6	90.1	90.8	92.3	92.4
6-9 years	45.6	50.4	56.6	59.9	63.4	66.6	70.9	76.3	79.0	79.0	79.3
10-13 years	4.4	4.8	5.7	6.9	7.9	7.9	8.5	8.9	12.1	10.8	11.0

☞ New figures are expected to be published in November 2002.

Charges paid by parents

	1992	1993	1994	1995	1996	1997	1998	1999	2000	2001	2002
<i>DKK</i>											
Monthly charge per child enrolled for all day-care											
Day-care	1 398	1 388	1 434	1 482	1 519	1 580	1 649	1 728	1 820	1 969	2 098
Nurseries	1 566	1 704	1 764	1 885	1 972	2 075	2 133	2 256	2 336	2 505	2 640
Kindergartens	1 036	1 064	1 044	1 081	1 115	1 159	1 204	1 254	1 311	1 417	1 507
Age-integrated institutions	1 023	1 050	1 035	1 082	1 118	1 158	1 209	1 256	1 318	1 412	1 506
Recreation centres	686	697	763	779	793	814	859	876	881	924	932
Outside school-hours care	708	718	741	774	799	846	885	960	1 020	1 073	1 114

Source: From 2000: Ministry of the Interior.

Hospitals

	1989	1990	1991	1992	1993	1994	1995	1996	1997	1998	1999
<i>Number as of 31 December</i>											
Somatic hospitals¹											
Number of institutions	94	90	90	88	84	83	82	82	82	79	69 ²
Number of beds	26 235	25 474	24 615	24 134	23 976	23 905	23 603	22 733	22 336	21 922	21 114
Inhabitants per bed	196	202	209	214	216	217	221	232	237	242	252
Patient days (1,000)	7 661	7 531	7 387	7 486	7 488	7 391	7 071	6 993	6 860	6 770	6 657
Hospitalisations (1,000)	1 065	1 073	1 069	1 093	1 110	1 112	1 089	1 092	1 099	1 108	1 128
Medical treatment of out-patients ³ (1,000)	3 680	3 793	3 862	4 126	4 421	4 535	1 016	1 146	1 194	1 274	1 369
Doctors, qualified nurses and other nursing staff ^{4, 5}	77 573	74 829	76 213	76 977	76 652	76 915	77 725	79 353	80 158	80 571	80 341
Number of doctors ⁴	8 315	8 416	8 563	8 656	8 714	8 800	8 915	9 247	9 534	9 623	9 747
Number of qualified nurses ⁴	21 574	22 075	22 970	23 853	24 478	24 690	25 020	25 995	26 285	26 554	26 951
Other nursing staff ⁴	47 684	44 338	44 680	44 468	43 460	43 425	43 790	44 111	44 339	44 395	43 643
Psychiatric hospitals											
Number of institutions	17	16	16	14	14	13	13	12	12	12	12
Number of stipulated beds	3 994	3 630	3 457	2 630	2 487	2 265	2 164	2 233	2 202	2 160	2 238
Inhabitants per bed	1 284	1 415	1 489	1 963	2 083	2 294	2 410	2 362	2 405	2 460	2 382
Patient days (1,000)	1 242	1 158	1 064	853	821	747	707	727	745	736	774
Hospitalisations	18 208	18 284	18 511	15 446	14 934	13 325	13 035	14 849	14 771	15 742	17 479
Medical treatment of out-patients ³ (1,000)	96	121	133	125	133	134	11	15	17	20	18
Physicians, qualified nurses and other nursing staff ^{4, 6}	7 743	7 546	7 382	6 049	5 896	5 369	5 365	5 358	4 967	4 994	5 512
Number of doctors ⁴	493	505	524	432	432	393	401	418	356	372	411
Number of qualified nurses ⁴	1 498	1 545	1 601	1 373	1 330	1 193	1 148	1 170	1 087	1 105	1 244
Other nursing staff ⁴	5 752	5 496	5 257	4 244	4 134	3 783	3 816	3 770	3 525	3 518	3 857

¹ Somatic hospitals, including psychiatric departments.

² The decrease is due to uniting of hospitals in Frederiksborg and Funen County.

³ Until 1994: number of calls by out-patients. Subsequently completed medical treatment of out-patients.

⁴ Calculated as full-time employees and converted on the basis of working hours. A full-time employee works 38 hours in 1989 and 1990 and 37 hours from 1991.

⁵ From 1992 including Nordvang at Glostrup.

⁶ From 1992 excluding Nordvang at Glostrup. 1997-1999: Excluding the psychiatric hospital Dianalund and Middelfarts Psychiatry.

Source: National Board of Health and Ministry for Interior Affairs and Health.

Health care staff outside hospitals

	1991	1992	1993	1994	1995	1996	1997	1998	1999	2000	2001
General practitioners ¹	3 189	3 228	3 265	3 318	3 354	3 372	3 409	3 404	3 419	3 410	3 459
General practitioners per 1,000 inhabitants	0.62	0.62	0.63	0.64	0.64	0.64	0.65	0.64	0.64	0.64	0.64
Practising specialist doctors ²	775	770	769	770	769	773	775	775	765	803	802
Dentists in own practice	2 678	...	2 628	2 654	2 663	2 661	2 659	2 627	...	2 594	2 613
Midwives ³	1 031	1 038	1 032	1 052	1 115	1 191	1 253	1 320	1 323
Public health nurses ⁴	1 101	1 102	1 124	1 157	1 197	1 219	1 297	1 389	1 397	1 390	1 431

¹ General practitioners having entered into collective agreement with the Negotiation Committee of Public Health Security as on 31.12.

² Specialist physicians having entered into collective agreement with the Negotiation Committee of Public Health Security. Only full-time employed. Excluding hospital physicians with own practice.

³ In and outside hospitals.

⁴ Converted to full-time employed. The break in series from 1999 to 2000 is due to the changeover from questionnaire-based data to register data for compilation of the statistics on earnings.

Source: Negotiation Committee of Public Health Security, the Danish Dental Association, the Danish Association of Midwives, and material from Statistics Denmark.

Staff employed in the social sector

	1975	1980	1985	1990	1995	1996	1997	1998	1999	2000	2001
<i>Number, converted to full-time employed</i>											
Distribution by area											
Total staff¹	108 080	143 854	169 258	190 713	210 121	218 735	226 764	233 009	237 576	241 511	...
Day-care ²	10 878	19 679	16 898	19 952	20 859	22 361	23 725	24 856	24 995	24 387	24 239
Day-care institutions for children and young people ³	25 167	34 996	40 737	44 635	52 334	53 988	56 921	59 642	61 629	60 613	...
Special day-care institutions for children and young people	299	484	575	684	747	811	859	1 009	1 024	...
Clubs for children and young people	1 710	2 338	3 651	4 458	3 895	4 032	3 993	4 039	4 120	4 102	...
Outside school-hours care ⁴	•	•	•	3 559	8 338	9 224	10 333	11 300	12 600	12 700	...
Institutions for drug addicts	556	672	607	564	573	707	686	736	808	...
Residential institutions for children and young people ⁵	3 930	6 260	6 756	6 515	6 166	6 370	6 532	6 597	7 566	6 868	...
Residential institutions for disabled adults ⁶	•	6 077	7 804	8 775	9 481	9 637	10 137	10 142	12 038	12 363	...
Special residential nursing homes ⁷	772	762	3 376	4 703	4 814	4 870	4 920	4 428	4 465	...
Care of the elderly ⁸	50 285	68 749	81 620	87 255	90 226	92 945	93 927	93 899	93 567	94 425	95 594
Health care for babies and schoolchildren	980	1 214	1 325	1 383	1 356	1 416	1 481	1 550	1 566	1 572	1 547
Rehabilitation institutions ⁹	750	2 022	2 994	3 855	4 712	4 819	4 850	5 054	5 853	7 520	...
Reception centres etc.	680	810	1 080	1 191	1 321	1 357	1 417	1 562	1 521	1 537	...
Social work activities without accommodation ¹⁰	82	171	219	191	223	211	222	207
Municipal dental care	4 036	3 484	3 192	3 225	3 216	3 213	3 187	3 076	3 099
Institutions for alcoholics ¹¹	268	90	71	76	77	76	77	75	...
Shared housing etc. under the Social Assistance Act clause 68 ¹²	•	•	•	784	2 028	2 927	3 557	4 391	2 477	3 276	...
Disability	•	•	•	•	•	•	•	•	•	125	123
Foster-families	•	•	•	•	•	•	•	•	•	286	364
Advisory ¹⁰	•	•	•	•	•	•	•	•	•	768	883
Preventive ¹³	•	•	•	•	•	•	•	•	•	1 521	1 762
Care for the mentally retarded ¹⁴	10 850	•	•	•	•	•	•	•	•	•	•
Other specialist care ¹⁴	2 850	•	•	•	•	•	•	•	•	•	•
Distribution by functions											
Total staff¹	108 080	143 854	169 258	190 713	210 121	218 735	226 764	233 009	237 576	241 511	...
Management and administration	3 212	2 477	3 902	6 463	6 819	7 359	7 613	7 686
Care and nursing ¹⁴	120 535	135 037	155 989	166 554	173 023	178 190	183 156	186 241
Kitchen, cleaning activities, etc.	20 107	18 994	18 038	14 183	14 104	14 838	14 643	14 326
Temporary workers	4 012	5 364	8 443	9 189	8 712	8 911	7 674
Persons in job-training	8 738	8 420	7 140	7 376	8 332	8 387	9 049
Staff in outside school-hours care ¹⁵	•	•	•	•	8 338	9 224	10 333	11 300	12 600	12 700	...

Note: The staff is indicated as full-time employees, converted on the basis of working hours. A full-time employed worked 40 hours per week in 1986, 39 hours in 1987 and 1988, 38 hours in 1989 and 1990, and from 1990 37 hours per week. The break in series from 1999 to 2000 is due to the changeover from questionnaire-based data to register data for compilation of the statistics on earnings.

¹ Excluding staff in social and health administration.

² Persons engaged in day-care are indicated as full-time employees, regardless of actual working hours per week.

³ Including remedial teachers until 1999.

⁴ From 1993, the figures are calculated on the basis of information provided by the Danish Ministry of Education on staff members per pupil.

⁵ Including staff transferred from care of the mentally retarded and specialist care as from 1 January 1980. From 1999: including family centres with 705 full-time employees. From 2000 Including, e.g. "home-visitors" and family centres.

⁶ Including staff transferred from care of the mentally retarded and specialist care as from 1 January 1980. From 1999: Accommodation offered to persons with reduced capability, persons suffering from arrested development, the physically handicapped etc

⁷ Including nursing homes for senile dementia, i.e. psychiatric nursing homes under the hospital service. Transferred from the Ministry of the Interior to the Ministry of Social Affairs from 1 January 1987. From 1999: Accommodation offered to persons with reduced capability, mental disorders etc.

⁸ Including staff in nursing and day-care homes, day centres, sheltered dwellings, as well as integrated schemes. From 1999 including social education assistance and other treatment schemes. From 2000 excl. people in job training.

⁹ Including staff transferred from care of the mentally retarded and specialist care as from 1 January 1980. From 1999: including rehabilitation staff outside the institutions.

¹⁰ From 2000 local government's social work activities without accommodation are included.

¹¹ From 1987 excluding out-patients clinics for alcoholics.

¹² From 1989: Assistance under Sections 59 and 68 in shared accommodation etc., from 1996 also assistance for persons with special social problems, in open meeting places and support and contact persons for people with mental disorders. From 1999: Support and contact persons for people with mental disorders, assistance with housing schemes for temporary accommodation as well as companion schemes.

¹³ Including, e.g. "home-visitors" and family centres.

¹⁴ Care of the mentally retarded and specialist care was transferred to the counties from 1 January 1980. Personnel can not be divided by function and are therefore included under "Care and nursing".

¹⁵ From 1993 staff engaged in outside school-hours care cannot be distributed by education and function, see item 4.

➤ New figures are expected to be published in November 2002.

Number of pensioners and annual expenditure

	1991	1992	1993	1994	1995	1996	1997	1998	1999	2000	2001
<i>Number</i>											
Pensioners, total	959 260	967 908	972 109	974 527	981 535	980 819	980 306	981 030	981 228	976 545	968 493
Old-age pensioners, total	706 003	710 894	712 561	710 490	711 069	709 109	707 575	707 953	709 333	710 162	706 434
Men	285 495	287 438	288 314	287 920	288 332	288 015	287 785	288 481	289 846	291 351	290 283
Women	420 508	423 456	424 247	422 570	422 737	421 094	419 790	419 472	419 487	418 811	416 151
Early retirement pensioners, total	253 257	257 014	259 548	264 037	270 466	271 710	272 731	273 077	271 895	266 383	262 059
Men	98 056	100 875	103 202	106 252	110 407	112 036	113 404	114 820	115 290	113 976	113 074
Women	155 201	156 139	156 346	157 785	160 059	159 674	159 327	158 257	156 605	152 407	148 985
Early retirement pensioners with highest / intermediate pension	156 140	158 002	158 587	160 781	166 029	166 646	166 281	165 690	165 624	164 793	166 851
Men	76 899	77 947	78 209	79 445	82 163	82 462	82 248	82 031	81 903	81 426	81 954
Women	79 241	80 055	80 378	81 336	83 866	84 184	84 033	83 659	83 721	83 367	84 897
Early retirement pensioners with ordinary/ increased pension	97 117	99 012	100 961	103 256	104 437	105 064	106 450	107 387	106 271	101 590	95 208
Men	21 157	22 928	24 993	26 807	28 244	29 574	31 156	32 789	33 387	32 550	31 120
Women	75 960	76 084	75 968	76 449	76 193	75 490	75 294	74 598	72 884	69 040	64 088
<i>Per cent</i>											
All pensioners in per cent of the population (15 years and over)	22	23	23	23	23	23	23	23	23	22	21
Early retirement pensioners in per cent of the population (15-66 years)	7	7	7	7	8	8	8	8	8	7	7
<i>DKK millions</i>											
Social security pension payments [■]	54 058	55 998	57 581	59 540	75 077	77 667	79 253	79 335	80 954	81 955	83 723
Old-age pension payments [■]	35 020	36 375	37 541	38 812	49 722	51 150	52 181	51 925	52 924	53 901	55 396
Early retirement pension payments [■]	19 039	19 623	20 041	20 728	25 355	26 517	27 071	27 410	28 030	28 054	28 327

Note: Including pensioners living in nursing homes.

 New figures are expected to be published in April 2003.

HIV-positive

	1991	1992	1993	1994	1995	1996	1997	1998	1999	2000	2001	Total ¹
<i>Number of first-time registered HIV positive</i>												
Total	327	380	331	298	304	269	273	212	284	258	302	3 377
Men	258	291	252	204	224	199	204	150	184	162	211	2 448
Homo/bisexual	152	143	130	103	116	101	105	76	93	72	100	1 271
Drug addicts	21	41	11	15	20	15	18	9	10	15	14	198
Heterosexual	65	69	88	64	69	59	66	52	69	68	78	761
Blood transfusions	2	2	1	1	1	1	1	-	-	1	1	14
Congenital	1	5	3	1	1	2	1	1	1	2	1	19
Other/unknown	17	31	19	20	17	21	13	12	11	4	17	185
Women	69	89	79	94	80	70	69	62	100	96	91	929
Homo/bisexual	-	-	-	-	-	-	-	-	-	-	-	-
Drug addicts	14	11	13	13	14	10	12	4	15	5	14	131
Heterosexual	51	67	62	70	58	57	47	50	78	79	66	707
Blood transfusions	-	1	1	2	3	-	-	2	1	4	-	14
Congenital	2	2	2	5	2	1	3	2	1	4	9	34
Other/unknown	2	8	1	4	3	2	7	4	5	4	2	43

¹ Total reported cases in the period 1.8.1990-31.12.2001.

Source: The National Serum Institute.

Cases of AIDS

	1991	1992	1993	1994	1995	1996	1997	1998	1999	2000	2001	Total ¹
<i>Number of diagnosed AIDS patients</i>												
Men												
Total diagnosed	199	192	209	198	184	132	88	63	57	41	46	2 102
Of whom dead as of 31 Dec. 2001	190	186	192	164	126	64	30	16	14	5	3	1 667
Died during the year ²	164	175	206	207	206	130	58	35	33	16	10	1 667
Women												
Total diagnosed	11	17	30	38	29	26	21	11	17	17	25	290
Of whom dead as of 31 Dec. 2001	11	16	24	25	23	9	4	2	6	3	2	171
Died during the year ²	8	13	18	29	31	19	5	7	6	5	6	171

¹ Total in the period 1980-2001.

² Total deaths during the year regardless of the year of diagnosis.

Source: The National Serum Institute.

Consumption of medicinal drugs

	1994	1995	1996	1997	1998	1999	2000	2001	1994	2001
<i>DDD pr. thousand persons per day</i>									<i>DKK mio.</i>	
Total consumption of medicines	754.7	831.7	854.5	869.5	900.2	919.1	943.1	990.1	6 363.3	9 992.0
Digestion and metabolism	86.7	104.1	109.2	108.9	110.8	112.2	115.6	122.2	895.6	1 238.2
Blood and blood-forming organs	33.5	43.4	48.1	51.4	55.2	57.1	58.6	59.9	67.1	159.5
Cardiovascular disorders	186.6	192.9	198.6	205.9	216.7	228.1	240.0	257.4	1 019.2	1 729.0
Dermatological preparations	26.7	29.4	30.3	31.2	32.9	34.0	34.1	35.5	284.0	310.1
Sex hormones, gynaecological and urinary system	94.1	96.3	96.7	99.1	101.9	104.3	106.0	107.6	441.2	678.6
Systematic hormonal preparations	18.1	18.7	19.0	19.5	20.0	20.6	21.2	22.3	135.8	102.4
Infectious diseases	14.1	14.1	12.7	12.7	13.2	12.6	12.6	13.2	464.6	640.4
Cancer and immune-system treatments	0.8	0.9	1.0	1.1	0.9	0.9	1.0	1.0	26.2	50.8
Musculo-skeletal system	31.5	34.0	34.8	34.3	35.0	34.8	36.9	41.9	270.6	444.4
Central nervous system	164.7	187.0	188.9	188.3	192.8	194.4	199.5	208.8	1 620.6	2 985.8
Anti-parasitic products	1.9	2.3	2.6	2.7	2.4	2.0	1.7	1.4	38.5	68.2
Respiratory system	89.3	101.7	105.7	107.5	111.0	110.6	108.5	111.2	861.5	1 287.8
Sensory organs	6.9	7.1	7.0	7.0	7.5	7.6	7.5	7.8	149.8	206.2
Other ¹	0.0	0.0	0.0	0.0	0.0	0.0	0.0	0.0	88.6	90.5

Note 1: The table covers sales of medicinal drugs in the primary health sector and is based on information from the medicines statistics register at the Danish Medicine Agency. The register was established on 1 January 1994. Not all pharmacies were linked to the register from the start and reports were first complete 1996. As from 1997 sales from The National Serum Institute to general practitioners and institutions are included.

Note 2: Quantity consumption of medicinal drugs is calculated in number of DDDs (Defined Daily Dose) per 1,000 persons per day, i.e. the thousandth part of the population who could be treated with the amount of medicinal drugs consumed if the defined dose was taken. Turnover is calculated at pharmacies' sales price including VAT and prescription fees.

The DDD value of a medicinal drug can be changed if the use or dosage of a drug is reconsidered. Any changes are usually made once every year as of 1 January. Adjustments of the time series are made annually.

¹ Inclusive magistral products etc.
Source: Danish Medicines Agency.

Waiting times. Operations for admitted patients

	1991	1992	1993	1994	1995	1996	1997	1998	1999	2000	2001*	1991	2001*
<i>Number of patients in thousands</i>												<i>Per cent</i>	
Total	874	889	907	907	892	901	904	915	943	959	929	100	100
Acute	592	623	649	655	658	663	679	686	710	724	709	68	76
Less than 14 days	90	85	79	72	65	63	59	57	61	69	68	10	7
14 - 30 days	60	54	51	48	44	45	41	39	41	40	35	7	4
1 - 2 months	45	44	41	39	35	37	36	38	38	36	33	5	4
2 - 3 months	23	22	23	22	20	22	21	23	23	23	20	3	2
3 months and over	65	61	66	71	69	70	68	72	70	66	64	7	7

Note: Covers only patients for whom it was compulsory to report the date of reference over the entire period.

Source: The Danish Ministry of Health, The National Register of Patients

Waiting times. Selected operations

	1993	1994	1995	1996	1997	1998	1999	2000	2001*
<i>Average number of days</i>									
Knee arthroscopy (keyhole surgery)	126	144	144	152	150	124	99	107	114
Removal of kidneystones by laser surgery ...	46	41	37	53	73	60	63	58	45
Hysterectomy	62	64	80	78	78	72	75	81	86
Tonsillectomy	107	124	116	131	114	92	88	82	89
Hip replacements	179	179	190	170	167	165	160	150	168
Operations to improve hearing	217	242	232	237	225	240	233	245	255
Knee operations	228	219	205	146	148	175	164	166	178
Reconstruction of ligaments in the knee	179	213	244	240	224	215	197	184	181
Operations on meniscus of the knee	118	141	149	154	145	140	113	111	114
Operations for hernia	117	129	135	131	127	127	116	111	120
Operations for slipped discs	47	60	68	70	77	84	93	92	91
Gallstone surgery	89	88	100	105	99	102	97	90	90
Operations for cataracts	151	149	162	156	191	199	195	196	168
Operations for uterine prolapse	142	139	174	173	150	130	137	146	146
Excision of kidneystones	49	48	47	46	43	55	67	53	64
Operations for varicose veins	191	207	205	210	206	204	199	211	223
Prostate operations	78	80	93	87	95	93	91	89	92
Sterilisations, women	196	188	223	180	171	163	116	106	117
Sterilisations, men	139	152	144	95	107	100	84	99	114

Note: Covers only patients for whom it was compulsory to report the date of reference over the entire period.

Source: The Danish Ministry of Health, The National Register of Patients

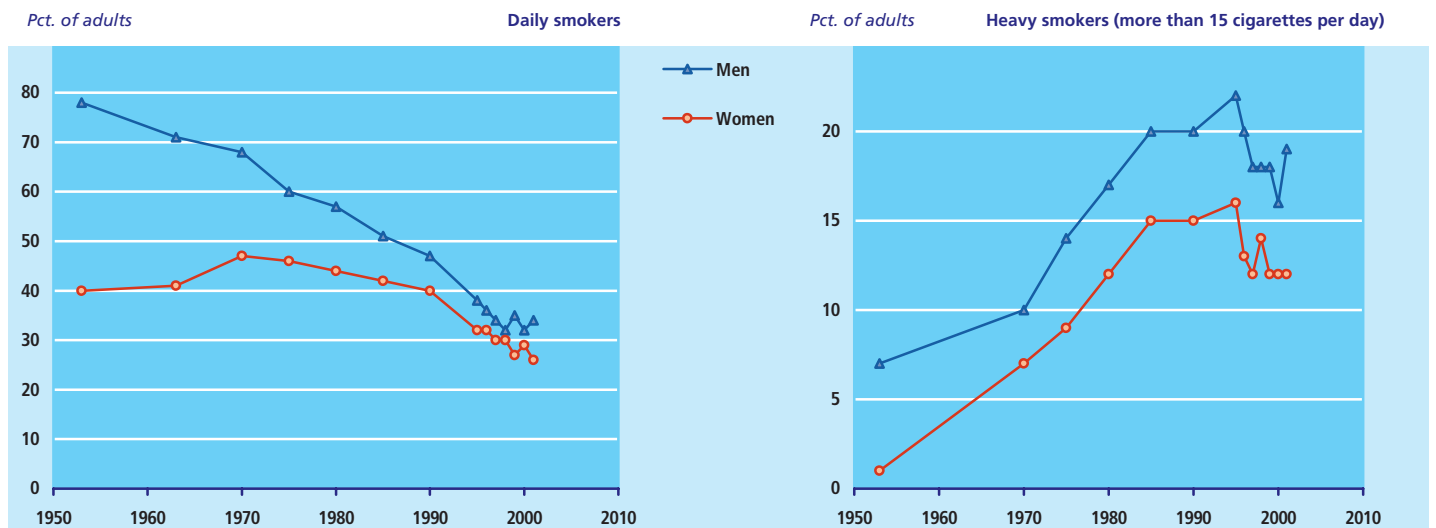
Causes of death

	1988	1989	1990	1991	1992	1993	1994	1995	1996	1997	1998	1988	1998
Number												Per cent	
Total	58 984	59 397	60 926	59 581	60 821	62 809	61 099	63 127	61 043	59 898	58 453	100.0	100.0
Men	30 308	30 449	31 170	30 085	30 542	31 273	30 536	31 267	30 388	29 526	28 989	100.0	100.0
Women	28 676	28 948	29 756	29 496	30 279	31 536	30 563	31 860	30 655	30 372	29 464	100.0	100.0
Heart disease	18 747	18 338	18 759	17 587	17 327	17 463	16 311	16 595	14 623	14 279	13 732	31.8	23.5
Men	9 962	9 780	9 821	9 238	9 068	8 916	8 416	8 450	7 633	7 338	7 103	32.9	24.5
Women	8 785	8 558	8 938	8 349	8 259	8 547	7 895	8 145	6 990	6 941	6 629	30.6	22.5
Cancer	15 078	14 944	15 025	14 937	15 109	15 486	15 651	15 701	15 649	15 258	15 178	25.6	26.0
Men	7 743	7 598	7 814	7 489	7 689	7 958	8 034	7 948	7 977	7 615	7 668	25.5	26.5
Women	7 335	7 346	7 211	7 448	7 420	7 528	7 617	7 753	7 672	7 643	7 510	25.6	25.5
Cerebro-vascular disease	5 236	5 220	5 567	5 558	5 658	5 920	5 384	5 543	5 464	5 149	4 995	8.9	8.5
Men	2 238	2 224	2 371	2 348	2 359	2 468	2 217	2 334	2 294	2 173	2 088	7.4	7.2
Women	2 998	2 996	3 196	3 210	3 299	3 452	3 167	3 209	3 170	2 976	2 907	10.5	9.9
Pneumonia and influenza	1 215	1 484	1 627	1 553	1 711	2 014	1 797	2 267	2 285	1 725	1 488	2.1	2.5
Men	546	652	703	656	756	872	817	1 012	963	771	628	1.8	2.2
Women	669	832	924	897	955	1 142	980	1 255	1 322	954	860	2.3	2.9
Bronchitis and asthma	2 509	2 527	2 715	2 527	2 592	2 774	2 851	3 173	3 022	3 369	3 510	4.3	6.0
Men	1 517	1 522	1 607	1 463	1 462	1 497	1 545	1 720	1 530	1 770	1 771	5.0	6.1
Women	992	1 005	1 108	1 064	1 130	1 277	1 306	1 453	1 492	1 599	1 739	3.5	5.9
Diabetes	903	807	813	782	823	997	837	795	629	1 093	1 195	1.5	2.0
Men	471	405	422	367	410	511	425	384	313	566	605	1.6	2.1
Women	432	402	391	415	413	486	412	411	316	527	590	1.5	2.0
Cirrhosis of the liver	658	726	712	719	595	725	586	739	742	716	650	1.1	1.1
Men	456	464	486	471	337	471	404	525	500	471	470	1.5	1.6
Women	202	262	226	248	258	254	182	214	242	245	180	0.7	0.6
Accidents	2 827	2 708	2 547	2 319	2 326	2 431	2 384	2 470	2 245	2 430	2 357	4.8	4.0
Men	1 498	1 477	1 376	1 267	1 229	1 245	1 273	1 322	1 225	1 246	1 213	4.9	4.2
Women	1 329	1 231	1 171	1 052	1 097	1 186	1 111	1 148	1 020	1 184	1 144	4.6	3.9
Suicide	1 336	1 379	1 241	1 156	1 138	1 159	996	922	892	817	760	2.3	1.3
Men	843	869	815	762	742	749	679	625	631	560	544	2.8	1.9
Women	493	510	426	394	396	410	317	297	261	257	216	1.7	0.7
Other causes of death	10 125	10 937	11 583	12 180	13 269	13 561	13 996	14 610	15 161	14 770	14 184	17.2	24.3
Men	4 781	5 220	5 529	5 844	6 309	6 391	6 517	6 744	7 076	6 807	6 637	15.8	22.9
Women	5 344	5 717	6 054	6 336	6 960	7 170	7 479	7 866	8 085	7 963	7 547	18.6	25.6
Unknown causes of death¹	350	327	337	263	273	279	306	312	331	292	404	0.6	0.7
Men	253	238	226	180	181	195	209	203	246	209	262	0.8	0.9
Women	97	89	111	83	92	84	97	109	85	83	142	0.3	0.5

¹ Covers persons resident in Denmark who die outside Denmark.

 New figures are expected to be published in October 2002.

Smokers



Source: PLS Rambøll for the National Health Board, Danish Lung Association, the Danish Heart Foundation and the Danish Cancer Society.