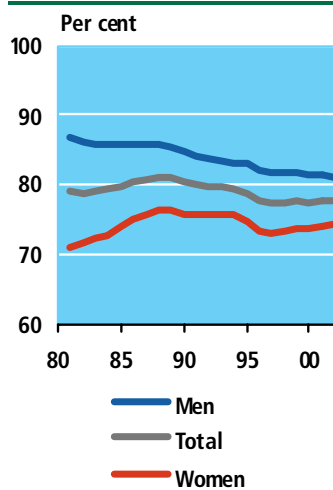


Labour market and wages

1. The Danish labour market

Figure 1
Activity rate for
16-66 year-olds 1981-2002



More women in the labour market

Labour market statistics are based on the basic concepts which have been adopted by the International Labour Organization (ILO). According to these, the population is divided into three groups; the employed and unemployed, which together represent the labour force, and those outside the labour force. Developments since 1981¹ and up to 2002 show significant differences between men and women. The part of the population which is of working age (16-66 year-olds) has increased by 8.5 per cent for men and 7.4 per cent for women. In contrast, the labour force has risen by 1.4 per cent for men and 12.6 per cent for women in the same period. Therefore, there has primarily been an increase in the female part of the labour force.

Large increase in the activity rate for women in the 1980s

The activity rate for women increased sharply in the 1980s, while the rate for men fell. In the 1990s, the activity rate for men and women has fallen steadily during most of the period. However, the fall in the activity rate for women stopped in 1997, and has since then increased slightly. The activity rate is the proportion made up by the labour force, compared to the total population.

2. Attachment to the labour market

The life cycle – from child to pensioner

An individual's attachment to the labour market follows a life cycle which for most people begins after they have finished their education, look for a job, and find their first job. It ends when they retire with a pension. Between these points there are many intermediate phases and combinations. People can be studying and be employed at the same time. They can be studying or retired, and at the same time have a part-time job. They can be outside of the labour force temporarily, receive voluntary early retirement pensions, or receive early retirement pay.

The two dimensions in the labour market

One way of showing the changes in attachment to the labour market is to draw a population pyramid where the distribution of primary attachment to the labour market is shown for each age group. Figure 2 shows such a distribution for both men and women. The population pyramid shows the attachment to the labour market for each 5-year age group for men and women respectively. The figure shows the two dimensions in the labour market; attachment over the life cycle, and attachment for each age group.

¹ 1981 is the first year register-based labour force statistics were kept.

Labour market and wages

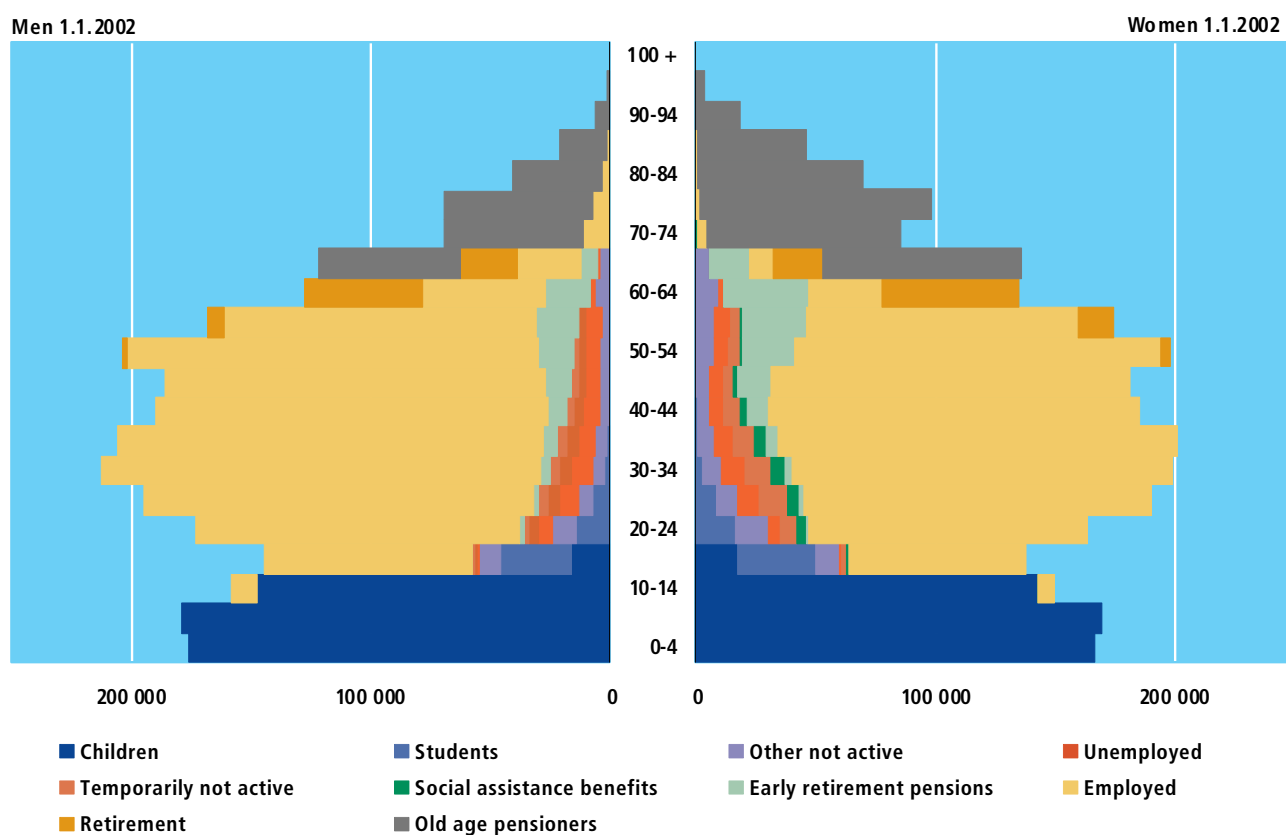
More men than women in the labour market – and for a longer time

The figure shows some characteristic differences between men's and women's attachment to the labour market. There are more men in employment than women, and relatively many men in the 65-84 age group continue in employment, whereas very few women do so.

Voluntary early retirement pensioners and those temporarily outside the labour force - mostly women

Between the ages of 15 and 64, there are more women who receive early retirement pensions or are temporarily outside the labour force. This indicates that women are more quickly burnt out at work than men.

Figure 2 Attachment to the labour market 2002



3. The dependency ratio

The dependency ratio has fallen

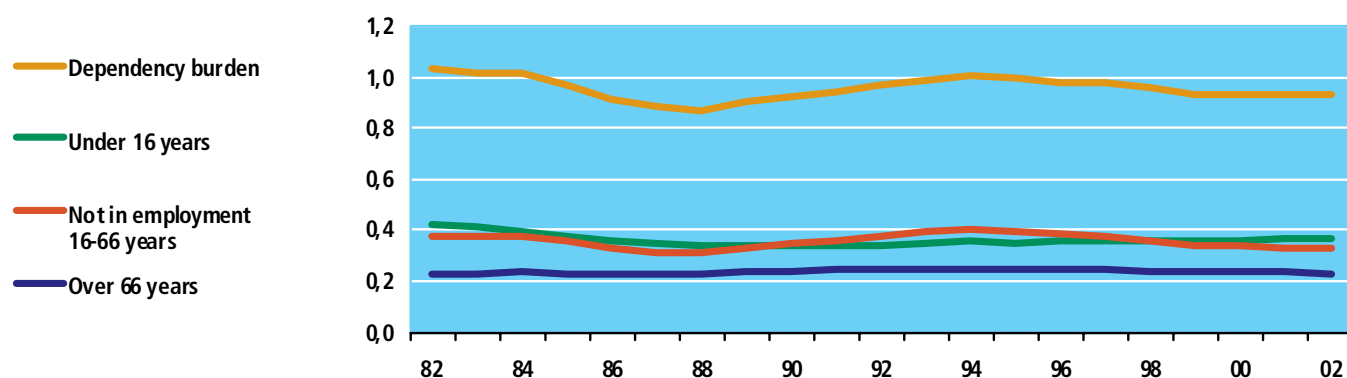
The dependency ratio is the total number of persons not in employment in relation to the number of employed persons. Overall, the dependency ratio has fallen from 1.01 to 0.93. Whereas, in 1981, 100 persons in employment had to provide for 101 persons not in employment, in 2002 they only had to provide for 93 persons not in employment. The dependency ratio peaks in 1982 and 1994 and follows the changes in unemployment with peaks at approximately the same time.

The dependency ratio for the population at working age

Since the beginning of the 1980s, there has been a slight fall in the number of unemployed persons in relation to the number of employed persons of working age (between 16 and 66 years). The dependency ratio for the population at working age is influenced by, e.g. the business trends, the current labour market policies and not least the structures in the labour market. In times of an economic boom or when the labour market policy results in activation of the unemployed, the dependency ratio will fall. Similarly, the labour market structures, e.g. more women become economically active, will result in a reduction of the dependency ratio. The dependency ratio for the population at working age peaked in 1994 and has been steadily falling.

Figure 3

Dependency ratio 1981-2002



Note. The dependency ratio is calculated as the number of persons not in employment divided with the number of employed persons.

The dependency ratio for the population not at working age

The population distribution by age has a great impact on the dependency ratio. A large number of young and elderly people in the population will result in a higher dependency ratio due to the fact that these age groups are generally not economically active. The fall in the overall dependency ratio from 1.01 to 0.93 is exclusively due to the fact that there are fewer children, while the number of over 66 year-olds per employed person has remained more or less constant.

The demographic dependency ratio

Developments in the demographic dependency ratio are calculated and forecasted in the chapter on population and elections. The demographic dependency ratio is exclusively calculated on the basis of the population distribution by age. The demographic dependency ratio will increase which is particularly linked to the fact that the number of elderly people will increase in future. In the light of this, it is essential to increase the number of employed persons of the normal working age in order to counter a sharp increase in the dependency ratio.

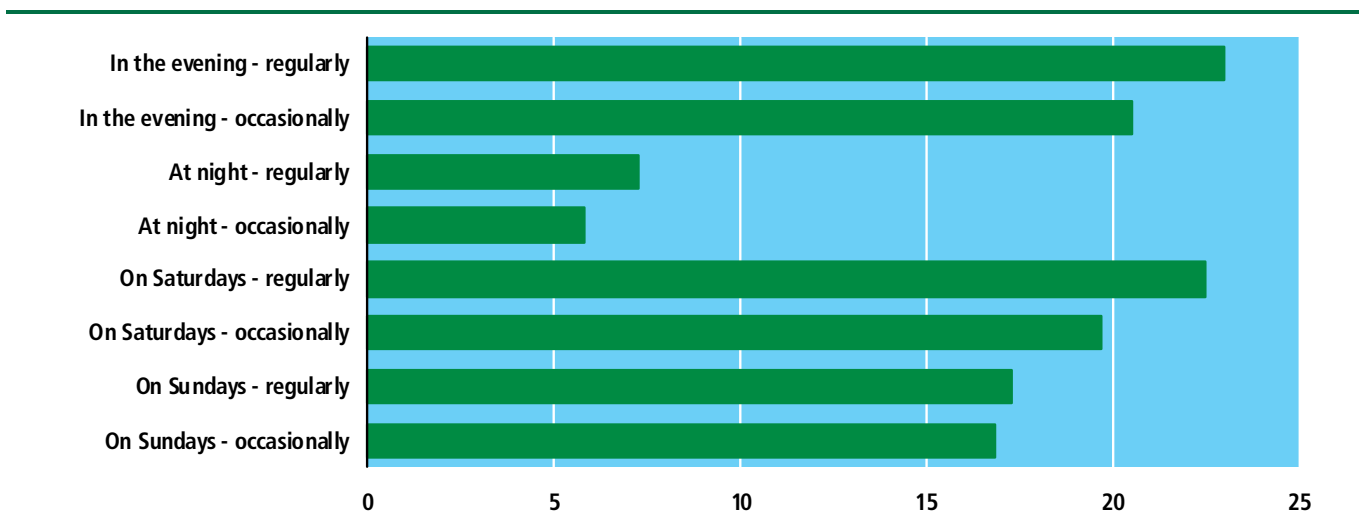
Labour market and wages

4. Working at atypical hours

One out of five works frequently in the evening

Working hours are not always performed in the daytime or during the first 5 days in the week. It is possible to analyse work performed at atypical hours on the basis of the Labour Force Survey. In 2002, 44 pct. worked either regularly or occasionally at night, while 13 pct. worked either regularly or occasionally in the evening. 42 pct. worked regularly or occasionally on Saturdays and 34 pct. worked regularly or occasionally on Sundays. A total of 57 pct. worked either regularly or occasionally at atypical hours, i.e. either in the evening and/or at night and/or during the weekend.

Figure 4 Working at atypical hours 2002



5. Pay and hourly earnings

Men between 35 and 59 earn most

Men earn more than women regardless of their age. Figure 5 also shows that hourly earnings are higher for employees aged 35 and 59 than for young and old people. It is important to be careful in drawing concrete conclusions from these statistics, particularly with regard to differences between the sexes. There is a great difference between the types of job men and women occupy within the different age brackets. In general there are more men than women in management positions. The statistics of earnings illustrate what individual employees get out of making their labour available to employers. The main concept in the earnings statistics is total earnings in relation to the number of hours worked, i.e. the hours where employees have been at work.

Figure 5

Hourly earnings for women and men 2001

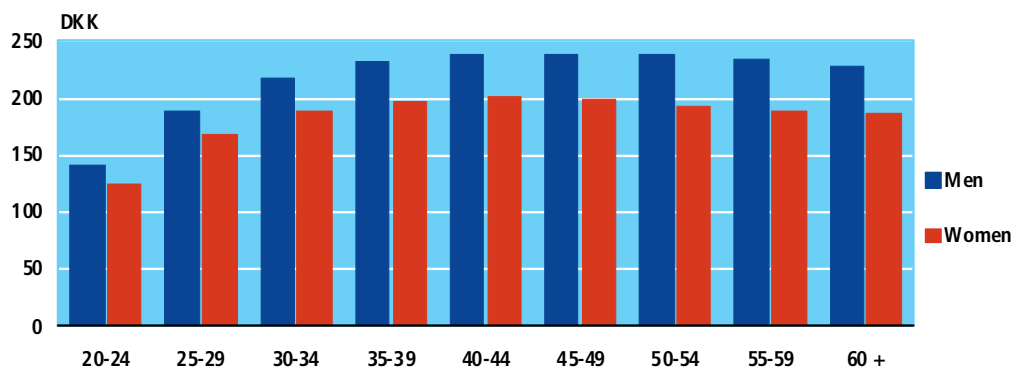
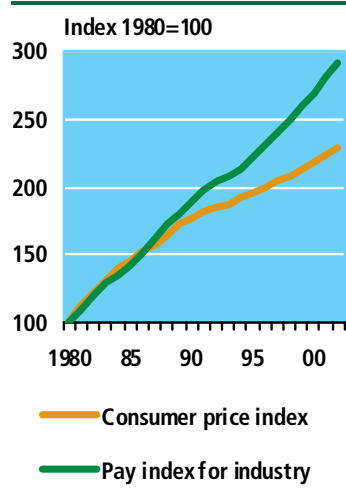


Figure 6
Pay index 1980-2002



Real pay has increased over the past ten years

In the period up to the late 1980s, pay and prices followed each other. In other words, real pay remained more or less unchanged during the period. From the late 1980s up to the present, pay has increased more rapidly than prices. Thus, this period is characterised by relatively large increases in real pay. This does not necessarily mean that all employees have experienced such a rapid increase in real pay.

In the same period, the structure of the labour market has changed so that today there are relatively more highly educated people than there were 20 years ago, which alone has an impact on the level of pay and thus real pay in an upward trend.

6. Unemployment and labour market policy measures

Two periods unemployment peaks

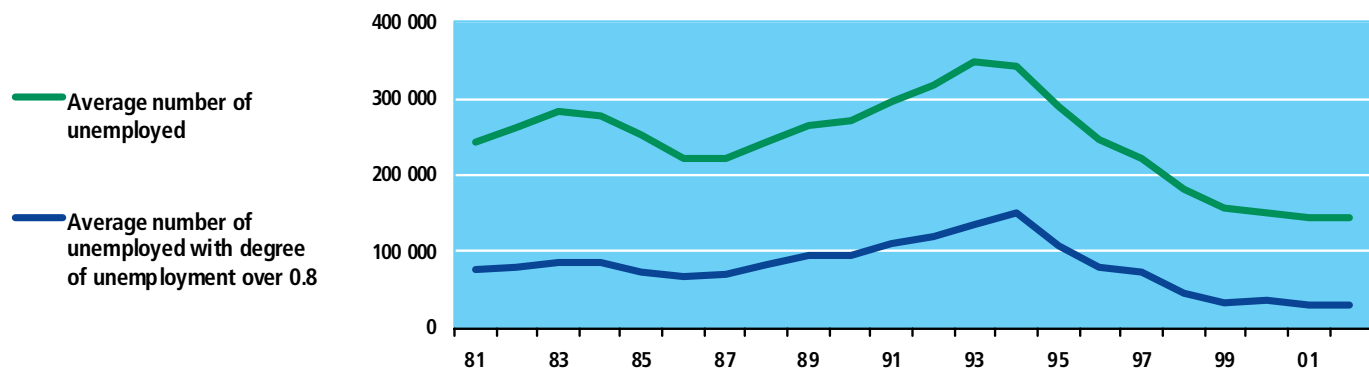
Examination of changes in unemployment reveals a curve with two clear peaks. These peaks are in 1983 and 1993-94 between the two recoveries in employment, which occurred in the mid 1980s and from 1994 onwards. Unemployment has been converted to full time equivalents.

Large fall in unemployment since 1994

Figure 7 shows total unemployment in full-time equivalents, and unemployment for those who have been unemployed for more than 80 per cent of the year. The two curves clearly show the same developments. The drop in unemployment from 1994 to 2002 is dramatic in that it has more than halved from 343,000 man-years in 1994 to just less than 145,000 in 2002. Figures for the long-term unemployed have fallen to less than a quarter from 150,000 man-years in 1994 to just below 31,000 in 2002.

Labour market and wages

Figure 7 Unemployment and long-term unemployment

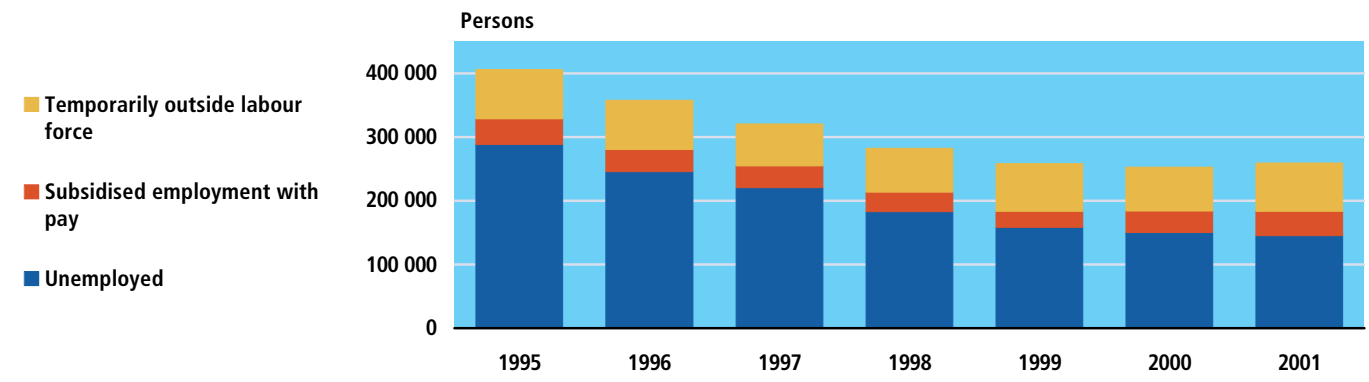


More persons on the fringe of the labour market

The development in the number of persons on the fringe of the labour market is shown in order to conduct an extended analysis of unemployment, converted to full-time (full-time participants). This group comprises unemployed, persons in subsidised employment with pay and persons temporarily outside the labour force (subsidised employment without pay, education and training measures, leaves from unemployment, etc.).

There has been a steady fall in the number of full-time participants on the fringe of the labour market from 406,000 in 1995 to 258,000 in 1999. This is primarily due to a heavy fall in the number of full-time unemployed, while the number of full-time persons in subsidised employment with pay or temporarily outside the labour force has remained more or less constant. Since 1999, the number of persons on the fringe of the labour market has remained fairly constant. This is due to a fall in the number of full-time unemployed, and a similar increase in the number of full-time persons in subsidised employment with pay. The number of persons temporarily outside the labour market has almost remained constant since 1999.

Figure 8 The fringe of the labour market

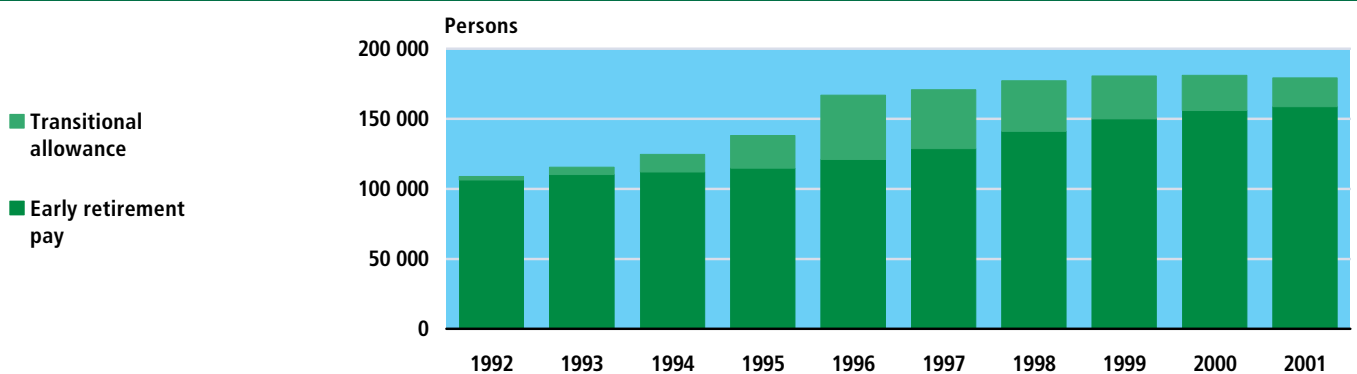


7. Retirement from the labour market

The decline in the number of persons in full-time equivalents on the fringe of the labour market over the period 1995-1999 is partly counterbalanced by an increase in the number of persons who have left the labour force. From 1995-1999, the number of persons receiving early-retirement pay increased, while the number of persons receiving transitional allowances was increasing until 1996, when the scheme was abolished. A contributory factor to the decline in the number of long-term unemployed since 1994 was that they could choose to leave the labour force and claim transitional allowances until the mid-1990's.

Figure 9

Retirement



The average age for retirement from employment is constant

People can leave the labour force by early-retirement pay. Other ways of leaving the labour force is to transfer to some form of pension scheme, early-retirement pension, civil-servant pension or old age pension. The following trend applies to all persons of 50 years and over who left the labour force in 2001: the average age of those who retire from employment in order to leave the labour force has remained almost constant at about 64 for men and about 62 for women.

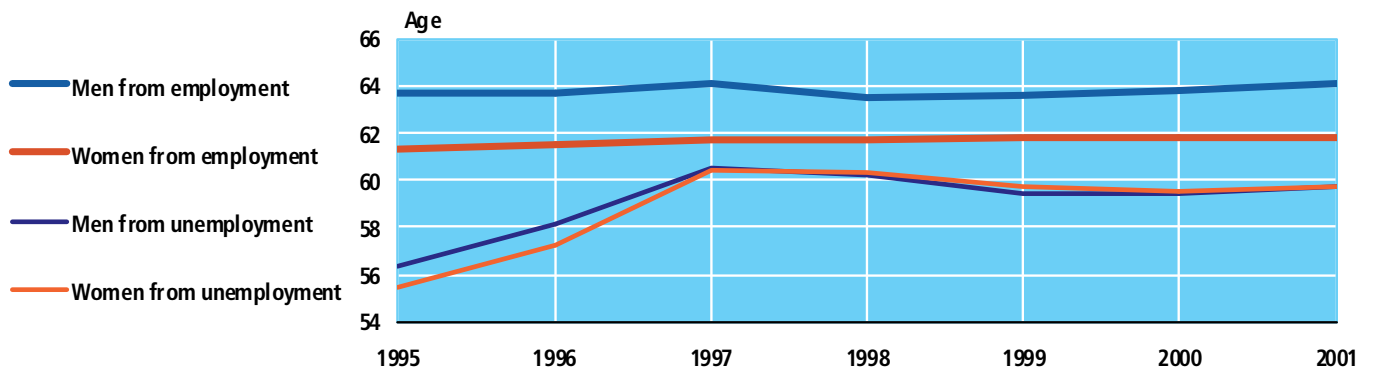
The unemployed retire later

The average age for both men and women who leave the labour force from unemployment has risen from 55-56 years old to 59-60 years old. A contributory factor to this increase is that transitional allowances, which were granted to insured unemployed persons between 50 and 59 years old ceased in 1996.

Labour market and wages

Figure 10

Average age for transfer from the labour force to being outside the labour force for persons of 50 years and above



Note. People, who have let the labour force on activation or leave schemes, have been excluded.

8. A European perspective

Denmark has the highest rate of employment

In the years to come there will be a substantial increase in the demographic dependency ratio in Denmark. The situation in the other EU countries is more or less the same. Against this background, it is the aim of the EU to increase the rates of employment for the economically active population until 2010. The aim is to increase the number of economically active people in order to support the increasing number of the elderly. To this end, three goals are set up:

- 1) 70 pct. of the population aged 15-64 must be in employment
- 2) 60 pct. of women must be in employment
- 3) 50 pct. of the elderly must be in employment

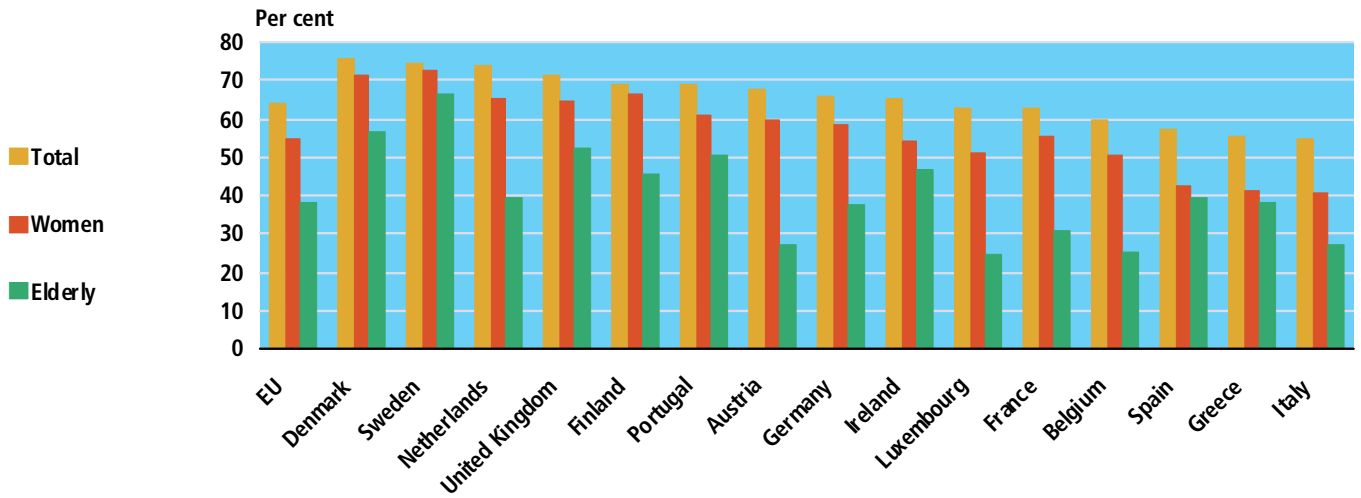
These goals apply to all EU countries, but further national goals may be determined in each EU country.

Figure 11 shows how these goals are fulfilled in the EU countries. Denmark has the highest rate of employment for people aged 15-64, and together with the Netherlands, United Kingdom and Sweden, Denmark already fulfils the aim of achieving a rate of employment of 70 pct.

Danish women and old people have high participation rates

In most EU countries the participation rate of economically active men is already high. To increase the overall participation rate, it is therefore essential that the participation rate of women and old people is increased. The participation rate of women is low in several countries, e.g. Italy, Greece and Spain. Similarly, the participation rate of the elderly is also low in many countries, e.g. Luxembourg, Belgium, Italy and Austria. Danish women and the elderly have the second highest rates of employment – only Sweden has higher rates.

Figure 11 Rates of employment in the EU in 2001



Source: Eurostat, New Cronos.

Table 136

Population by industry in the censuses

	1834	1840	1845	1855	1860	1870	1880	1890	1901
	— thousands people —								
Total population	1 224	1 283	1 350	1 500	1 601	1 785	1 969	2 172	2 450
Agriculture	704	720	744	816	853	934	1 006	997	1 015
Fishing and shipping	34	35	37	40	45	47	54	59	73
Trades and industry	261	302	334	389	423	460	511	606	721
Trade and sales	51	56	60	78	95	121	152	214	277
Non-material activities	81	82	83	86	92	106	132	159	194
Property	48	48	52	58	58	69	81	92	113
Assistance	45	41	40	33	35	48	33	45	56
	— per cent —								
Total population	100	100	100	100	100	100	100	100	100
Agriculture	58	56	55	54	53	52	51	46	41
Fishing and shipping	3	3	3	3	3	3	3	3	3
Trades and industry	21	24	25	26	26	26	26	28	29
Trade and sales	4	4	4	5	6	7	8	10	11
Non-material activities	7	6	6	6	6	6	7	7	8
Property	4	4	4	4	4	4	4	4	5
Assistance	3	3	3	2	2	3	2	2	2

Note. Grouping by industry is per the census in 1890. Children living at home and married women, as well as people who are employed as domestic help are placed in the same industry group as the head of the household. The total population indicates the number of people in the region that belongs to Denmark proper at the time of the census. Due to rounding up/down, the totals are not precise.

Table 137

Population by industry in the censuses

	1901	1906	1911	1930	1940	1950	1960	1965	1970
	— thousands people —								
Total population	2 450	2 589	2 757	3 551	3 844	4 281	4 585	4 768	4 938
Agriculture, etc.	975	999	1 041	1 127	1 066	1 012	861	703	495
Manufacturing	721	737	788	1 091	1 285	1 492	1 674	1 776	1 758
Trade and sales	238	291	310	421	484	557	631	661	681
Transport	126	138	162	236	249	306	335	331	330
Administration and professions	118	135	141	223	268	363	480	605	770
Industry not stated	53	68	73	86	73	63	31	43	69
Pension, property, assistance	219	220	241	367	418	487	574	649	834
	— per cent —								
Total population	100	100	100	100	100	100	100	100	100
Agriculture, etc.	40	39	38	32	28	24	19	15	10
Manufacturing	29	28	29	31	33	35	37	37	36
Trade and sales	10	11	11	12	13	13	14	14	14
Transport	5	5	6	7	7	7	7	7	7
Administration and professions	5	5	5	6	7	8	10	13	16
Industry not stated	2	3	3	2	2	1	1	1	1
Pension, property, assistance	9	8	9	10	11	11	13	14	17

Note. Children living at home and married women with no commercial employment as well as domestic help are placed in the same industry group as the head of the household. Grouping by occupation is per the census in 1950. 1901–1911 is excl. North Schleswig. Due to rounding up/down, the totals are not precise.

Source: Lars Bugge Andersen, et al. *Erhvervsstrukturens udvikling i Danmark 1901–1976, 1981*.

Table 138**Employed persons by industry**

	1981	1990	2000	2001	2002
	————— thousands —————				
Total	2 552	2 674	2 759	2 773	2 782
Agriculture, fishing and quarrying	200	157	108	105	102
Manufacturing	481	504	464	464	454
Electricity, gas and water supply	16	19	16	15	14
Construction	180	167	168	174	173
Wholesale/retail trade, hotels and restaurants, etc.	436	461	503	499	495
Transport, storage and communications	179	182	183	182	179
Financial intermediation, etc., business activities	176	282	344	362	376
Public and personal services	871	886	962	959	974
Activity not known	12	15	11	12	15

Table 139

Employed persons, by sex, industry and socio-economic status 2002

	Self-employed persons	Assisting spouses	Salaried employees						Salaried employees Total	Em- ployment Total
			Top managers	Upper levels	Inter-mediate levels	Basic levels	Other	Not further specified		
— thousands —										
Males and females, total	209.5	11.6	63.6	330.6	417.0	1 114.5	288.3	347.3	2 561.3	2 782.3
Agriculture, fishing and quarrying	47.3	5.2	0.2	0.8	1.1	11.6	13.1	23.1	49.8	102.3
Manufacturing	11.1	0.7	13.7	24.7	48.6	270.9	34.7	49.3	441.9	453.8
Electricity, gas and water supply	0.8	0.0	0.3	1.7	2.7	6.0	1.6	1.1	13.6	14.4
Construction	19.4	0.9	3.6	3.7	7.6	96.0	28.4	13.8	153.0	173.3
Wholesale/retail trade, hotels and restaurants, etc.	47.3	2.7	14.7	11.7	52.8	210.8	53.1	101.8	444.9	494.9
Transport, storage and communications	10.6	0.5	2.4	5.9	24.4	80.1	30.6	24.4	167.9	179.0
Financial intermediation, etc., and business activities	37.3	0.9	8.1	68.1	69.2	84.9	44.9	62.2	337.4	375.6
Public and personal services	21.4	0.4	20.6	213.9	210.6	354.2	81.8	71.4	952.6	974.3
Activity not known	14.2	0.2	0.0	0.0	0.0	0.1	0.0	0.2	0.3	14.7
Males, total	157.6	0.8	48.3	180.9	161.3	565.6	185.0	184.1	1 325.2	1 483.6
Agriculture, fishing and quarrying	42.2	0.1	0.2	0.6	0.7	8.8	9.6	17.1	37.1	79.4
Manufacturing	8.8	0.1	12.0	18.5	28.3	192.3	22.2	25.5	298.8	307.6
Electricity, gas and water supply	0.6	0.0	0.3	1.4	1.8	4.6	1.4	0.8	10.4	11.0
Construction	18.6	0.0	3.4	3.3	5.5	87.6	27.7	10.3	137.8	156.4
Wholesale/retail trade, hotels and restaurants, etc.	33.2	0.4	11.9	7.8	32.1	107.6	34.5	50.8	244.5	278.0
Transport, storage and communications	9.7	0.0	2.0	4.4	17.0	50.9	27.7	17.8	119.9	129.6
Financial intermediation, etc., and business activities	26.4	0.1	6.7	48.4	36.0	30.7	22.4	33.9	178.2	204.7
Public and personal services	10.4	0.0	11.9	96.6	39.8	82.9	39.5	27.8	298.5	308.9
Activity not known	7.8	0.0	0.0	0.0	0.0	0.0	0.0	0.1	0.2	8.0
Females, total	51.8	10.8	15.3	149.7	255.7	548.9	103.2	163.2	1 236.1	1 298.7
Agriculture, fishing and quarrying	5.1	5.1	0.0	0.2	0.4	2.7	3.4	5.9	12.7	22.9
Manufacturing	2.3	0.7	1.7	6.3	20.2	78.5	12.5	23.9	143.1	146.1
Electricity, gas and water supply	0.1	0.0	0.0	0.3	0.9	1.4	0.2	0.3	3.2	3.3
Construction	0.8	0.8	0.2	0.4	2.0	8.4	0.8	3.4	15.3	16.9
Wholesale/ retail trade, hotels and restaurants, etc.	14.2	2.3	2.8	3.9	20.7	103.3	18.6	51.1	200.4	216.9
Transport, storage and communications	0.9	0.5	0.4	1.5	7.4	29.1	2.9	6.6	48.0	49.4
Financial intermediation, etc., and business activities	10.9	0.8	1.4	19.7	33.2	54.2	22.5	28.3	159.2	170.9
Public and personal services	11.0	0.4	8.7	117.3	170.9	271.3	42.4	43.6	654.1	665.5
Activity not known	6.4	0.2	0.0	0.0	0.0	0.0	0.0	0.1	0.1	6.7

Table 140

Employed population, by sex, region and industry 2002

	Agriculture, fishing and quarrying	Manufacturing	Electricity, gas and water supply	Construction	Wholesale/retail trade, hotels and restaurants, etc.	Transport, storage and communications	Financial intermediation, etc., business activities	Public and personal services	Activity not known	Total
	thousands									
Males and females, total	102.3	453.8	14.4	173.3	494.9	179.0	375.6	974.3	14.7	2 782.3
Copenhagen Municipality	0.7	20.0	1.0	10.3	46.4	21.7	57.6	108.0	2.2	267.8
Frederiksberg Municipality	0.2	3.9	0.2	1.4	7.9	3.5	12.5	20.3	0.4	50.2
Copenhagen County	1.5	32.9	1.8	17.2	60.8	26.3	64.0	113.7	1.7	319.9
Frederiksborg County	3.0	26.0	1.3	12.7	37.4	11.2	34.3	72.1	1.2	199.1
Roskilde County	2.3	16.4	0.6	9.5	26.2	9.5	22.2	43.7	0.5	131.0
West Zealand County	6.7	24.0	1.4	13.8	25.5	9.5	15.4	53.7	0.8	150.8
Storstrøm County	6.8	19.2	0.7	10.7	21.3	7.6	11.6	47.2	0.7	125.8
Bornholm County	1.4	2.9	0.1	1.3	3.6	1.5	1.3	8.0	0.1	20.3
Funen County	13.2	41.1	1.0	15.8	40.4	12.3	25.5	83.7	1.2	234.1
South Jutland County	7.9	29.4	0.7	7.7	21.8	7.8	10.7	40.2	0.6	126.9
Ribe County	7.5	25.4	0.7	8.6	20.1	8.0	9.4	36.7	0.5	116.9
Vejle County	6.9	42.7	1.1	12.0	34.8	12.1	18.7	55.6	0.8	184.7
Ringkøbing County	10.9	39.5	0.6	8.7	25.1	6.5	12.7	43.2	0.5	147.8
Århus County	10.5	54.0	1.3	19.0	61.2	22.3	43.4	121.4	1.7	334.8
Viborg County	9.3	31.1	0.8	7.9	18.9	4.9	10.4	39.3	0.5	122.9
North Jutland County	13.6	45.4	1.2	16.7	43.5	14.2	25.9	87.7	1.1	249.2
Males, total	79.4	307.6	11.0	156.4	278.0	129.6	204.7	308.9	8.0	1 483.6
Copenhagen Municipality	0.5	12.5	0.7	9.4	25.9	15.3	32.3	40.9	1.4	138.9
Frederiksberg Municipality	0.1	2.3	0.1	1.3	4.5	2.3	7.1	7.6	0.2	25.4
Copenhagen County	1.1	20.7	1.3	15.2	35.6	18.4	35.2	37.3	0.9	165.7
Frederiksborg County	2.3	16.1	0.9	11.5	21.7	8.1	19.4	23.0	0.6	103.6
Roskilde County	1.7	10.6	0.5	8.5	15.2	6.7	11.6	13.2	0.3	68.2
West Zealand County	5.2	16.4	1.1	12.6	14.6	7.1	8.2	15.9	0.4	81.5
Storstrøm County	5.3	13.1	0.6	9.8	11.9	5.9	6.1	15.1	0.4	68.1
Bornholm County	1.2	1.9	0.1	1.2	1.9	1.1	0.7	2.8	0.1	10.9
Funen County	9.0	29.4	0.8	14.3	22.0	9.4	13.7	26.0	0.6	125.2
South Jutland County	6.3	20.3	0.6	6.9	12.0	5.7	5.3	12.0	0.3	69.2
Ribe County	5.9	17.3	0.5	7.7	10.9	5.9	4.8	10.7	0.3	64.0
Vejle County	5.5	28.8	0.8	10.8	19.5	8.7	9.7	15.8	0.4	99.9
Ringkøbing County	8.8	27.1	0.5	7.9	13.6	4.9	6.4	12.2	0.3	81.6
Århus County	8.0	38.0	1.0	17.0	34.9	16.2	24.5	37.4	0.9	177.9
Viborg County	7.4	21.1	0.6	7.1	10.5	3.8	5.4	11.6	0.2	67.6
North Jutland County	11.1	32.0	0.9	15.3	23.6	10.3	14.4	27.5	0.6	135.7
Females, total	22.9	146.1	3.3	16.9	216.9	49.4	170.9	665.5	6.7	1 298.7
Copenhagen Municipality	0.2	7.5	0.3	0.9	20.5	6.4	25.2	67.2	0.8	128.9
Frederiksberg Municipality	0.0	1.6	0.1	0.2	3.5	1.3	5.4	12.6	0.2	24.8
Copenhagen County	0.4	12.2	0.5	2.0	25.3	7.9	28.8	76.4	0.8	154.2
Frederiksborg County	0.7	9.8	0.3	1.2	15.7	3.1	14.9	49.1	0.6	95.5
Roskilde County	0.6	5.8	0.1	1.1	11.0	2.8	10.6	30.5	0.2	62.8
West Zealand County	1.5	7.7	0.3	1.2	10.9	2.4	7.2	37.8	0.4	69.3
Storstrøm County	1.5	6.1	0.1	0.9	9.4	1.7	5.5	32.1	0.3	57.7
Bornholm County	0.2	1.0	0.0	0.1	1.7	0.4	0.6	5.2	0.1	9.4
Funen County	4.1	11.7	0.2	1.5	18.4	2.9	11.8	57.7	0.6	108.9
South Jutland County	1.6	9.2	0.1	0.8	9.8	2.2	5.4	28.2	0.3	57.6
Ribe County	1.6	8.1	0.2	0.9	9.2	2.1	4.6	26.0	0.2	52.9
Vejle County	1.5	13.8	0.3	1.2	15.4	3.4	9.0	39.8	0.4	84.8
Ringkøbing County	2.1	12.4	0.1	0.9	11.5	1.7	6.4	30.9	0.3	66.3
Århus County	2.4	16.0	0.3	2.0	26.3	6.1	19.0	84.0	0.8	156.9
Viborg County	1.9	10.0	0.2	0.8	8.4	1.1	5.0	27.7	0.2	55.3
North Jutland County	2.5	13.4	0.2	1.5	19.8	3.9	11.4	60.2	0.5	113.4

Table 141

Population, by sex, age, and socio-economic status 2002

	Labour force population					Persons outside the labour force				Population Total
	Self-employed persons	Assisting spouses	Employees	Un-employed persons	Total	Temporarily outside the labour force	Retirement pensioners	Pen-sioners	Other persons outside the labour force	
— thousands —										
Males and females, total	209.5	11.6	2 561.3	110.5	2 892.8	88.7	178.5	871.8	1 336.5	5 368.4
16-66 years, total	186.1	10.6	2 495.9	110.5	2 803.0	88.6	178.5	231.2	303.1	3 604.5
Under 16 years	0.0	0.0	38.9	0.0	39.0	0.0	•	0.0	1 029.2	1 068.2
16-19 years	0.6	0.0	134.4	1.8	136.8	2.9	•	1.8	82.3	223.9
20-24 years	4.3	0.0	231.1	9.5	244.9	10.0	•	2.5	59.1	316.6
25-29 years	11.2	0.2	290.3	15.1	316.8	16.3	•	4.3	41.1	378.5
30-34 years	18.2	0.6	309.4	15.1	343.3	15.9	•	6.7	25.7	391.7
35-39 years	24.9	1.0	336.6	14.6	377.1	14.4	•	11.9	21.9	425.3
40-44 years	24.2	1.0	297.9	11.0	334.1	9.8	•	17.2	16.6	377.7
45-49 years	24.3	1.3	286.5	9.8	321.8	7.5	•	25.2	14.0	368.6
50-54 years	27.9	2.1	282.1	10.5	322.6	6.2	0.1	34.9	13.0	376.8
55-59 years	29.4	2.7	244.1	19.0	295.2	4.7	18.1	46.6	12.8	377.5
60-66 years	21.1	1.9	83.4	4.1	110.5	0.8	160.3	80.0	16.4	368.0
67 years +	23.3	0.9	26.5	0.0	50.8	0.0	0.0	640.6	4.3	695.7
Males, total	157.6	0.8	1 325.2	53.9	1 537.5	34.1	80.3	343.2	659.0	2 654.1
Males 16-66 years, total	137.9	0.7	1 284.6	53.9	1 477.1	34.1	80.3	96.9	131.7	1 820.1
Under 16 years	0.0	0.0	22.4	0.0	22.5	0.0	•	0.0	525.5	547.9
16-19 years	0.4	0.0	70.5	0.9	71.9	1.4	•	1.0	39.9	114.2
20-24 years	3.4	0.0	119.6	4.9	127.9	3.9	•	1.4	26.6	159.8
25-29 years	8.4	0.0	150.4	7.0	165.9	5.5	•	2.4	17.0	190.8
30-34 years	13.3	0.0	160.1	6.8	180.2	5.4	•	3.6	10.5	199.7
35-39 years	18.1	0.1	171.4	6.8	196.4	5.3	•	6.0	9.5	217.1
40-44 years	17.6	0.1	148.9	5.5	172.1	4.0	•	8.2	7.6	191.9
45-49 years	17.5	0.1	142.5	5.2	165.3	3.3	•	11.3	6.4	186.4
50-54 years	20.1	0.2	141.4	5.4	167.0	2.8	0.0	14.6	5.3	189.7
55-59 years	21.9	0.2	128.7	8.8	159.7	2.1	5.5	18.6	4.2	190.0
60-66 years	17.0	0.1	51.1	2.6	70.7	0.5	74.8	29.7	4.7	180.4
67 years +	19.8	0.1	18.1	0.0	38.0	0.0	0.0	246.2	1.9	286.1
Females, total	51.8	10.8	1 236.1	56.6	1 355.3	54.5	98.2	528.7	677.5	2 714.2
Females 16-66 years, total	48.2	9.9	1 211.2	56.6	1 326.0	54.5	98.2	134.3	171.4	1 784.4
Under 16 years	0.0	0.0	16.5	0.0	16.5	0.0	•	0.0	503.7	520.2
16-19 years	0.2	0.0	63.8	0.9	64.9	1.5	•	0.8	42.4	109.7
20-24 years	0.9	0.0	111.5	4.6	117.0	6.1	•	1.1	32.5	156.8
25-29 years	2.8	0.2	139.8	8.1	150.9	10.8	•	1.9	24.1	187.7
30-34 years	4.9	0.5	149.3	8.4	163.1	10.6	•	3.1	15.2	192.0
35-39 years	6.7	0.9	165.3	7.8	180.7	9.1	•	5.9	12.5	208.2
40-44 years	6.5	0.9	149.0	5.5	162.0	5.9	•	9.0	9.0	185.8
45-49 years	6.7	1.2	144.0	4.7	156.5	4.2	•	13.8	7.6	182.2
50-54 years	7.8	1.9	140.7	5.1	155.6	3.4	0.1	20.3	7.7	187.1
55-59 years	7.5	2.5	115.4	10.1	135.5	2.7	12.6	28.0	8.6	187.5
60-66 years	4.2	1.8	32.4	1.5	39.8	0.3	85.5	50.2	11.7	187.6
67 years +	3.6	0.9	8.4	0.0	12.8	0.0	0.0	394.4	2.4	409.6

Table 142

Population by sex, region and socio-economic status 2002

	Labour force population					Persons outside the labour force				Population Total
	Self-employed persons	Assisting spouses	Employees	Un-employed persons	Total	Temporarily outside the labour force	Retirement pensioners	Pen-sioners	Other persons outside the labour force	
	— thousands —									
Males and females, total	209.5	11.6	2 561.3	110.5	2 892.8	88.7	178.5	871.8	1 336.5	5 368.4
Copenhagen Municipality	16.3	0.3	251.2	11.3	279.1	10.8	9.6	75.6	125.4	500.5
Frederiksberg Municipality	3.4	0.1	46.7	1.9	52.2	1.2	2.3	16.3	19.4	91.3
Copenhagen County	19.9	0.6	299.3	9.9	329.8	8.6	19.4	102.2	157.3	617.3
Frederiksborg County	15.3	0.6	183.3	5.5	204.6	4.0	11.9	54.8	95.3	370.6
Roskilde County	8.7	0.4	121.9	3.8	134.8	2.8	8.3	30.1	58.9	234.8
West Zealand County	12.6	0.7	137.5	6.2	157.0	4.7	10.7	53.3	73.1	298.7
Storstrøm County	11.4	0.6	113.8	6.2	132.0	4.8	10.9	53.0	59.8	260.5
Bornholm County	2.2	0.2	18.0	1.7	22.1	0.8	1.8	9.3	10.2	44.2
Funen County	17.9	1.1	215.1	11.5	245.6	9.0	17.2	85.2	115.5	472.5
South Jutland County	10.7	0.9	115.2	5.0	131.9	3.7	10.1	44.1	63.4	253.2
Ribe County	9.2	0.7	107.0	3.7	120.6	3.7	7.4	35.7	57.0	224.4
Vejle County	13.2	0.8	170.7	7.4	192.1	5.7	12.2	54.6	86.8	351.3
Ringkøbing County	13.0	1.2	133.7	4.3	152.1	3.6	9.5	41.0	68.2	274.4
Århus County	23.5	1.2	310.2	15.1	349.9	13.6	20.2	93.4	167.5	644.7
Viborg County	12.1	1.0	109.9	3.6	126.5	2.9	7.5	40.2	57.1	234.3
North Jutland County	20.0	1.4	227.8	13.4	262.6	8.8	19.5	83.1	121.7	495.5
Males, total	157.6	0.8	1 325.2	53.9	1 537.5	34.1	80.3	343.2	659.0	2 654.1
Copenhagen Municipality	12.0	0.0	126.9	6.4	145.3	5.1	4.6	28.4	61.6	244.9
Frederiksberg Municipality	2.4	0.0	23.0	1.0	26.4	0.5	0.9	5.5	9.4	42.8
Copenhagen County	14.3	0.1	151.3	5.0	170.7	3.3	8.1	39.4	77.9	299.5
Frederiksborg County	10.9	0.1	92.6	2.7	106.3	1.4	5.1	22.3	47.2	182.3
Roskilde County	6.4	0.0	61.8	1.9	70.1	1.0	3.7	12.1	29.4	116.3
West Zealand County	9.5	0.1	72.0	2.9	84.4	1.8	5.0	21.4	35.7	148.3
Storstrøm County	8.6	0.1	59.4	3.0	71.1	1.8	5.1	21.8	29.3	129.1
Bornholm County	1.6	0.0	9.3	0.8	11.8	0.3	0.9	3.8	5.0	21.8
Funen County	13.5	0.1	111.7	5.8	131.0	3.6	8.2	33.5	57.1	233.4
South Jutland County	8.4	0.1	60.8	2.3	71.5	1.3	4.7	17.6	31.1	126.2
Ribe County	7.0	0.0	56.9	1.7	65.7	1.4	3.4	14.1	28.0	112.5
Vejle County	9.9	0.1	89.9	3.3	103.3	2.0	5.4	21.7	42.7	175.0
Ringkøbing County	10.4	0.0	71.2	1.7	83.3	1.2	4.2	15.9	33.2	137.9
Århus County	17.6	0.1	160.3	7.5	185.4	5.0	9.0	36.5	82.6	318.6
Viborg County	9.6	0.1	58.0	1.7	69.3	1.1	3.4	16.0	28.3	118.0
North Jutland County	15.4	0.1	120.2	6.3	142.0	3.2	8.7	33.2	60.4	247.5
Females, total	51.8	10.8	1 236.1	56.6	1 355.3	54.5	98.2	528.7	677.5	2 714.2
Copenhagen Municipality	4.4	0.2	124.4	4.9	133.8	5.8	5.1	47.2	63.8	255.6
Frederiksberg Municipality	1.0	0.0	23.7	0.9	25.7	0.7	1.4	10.8	9.9	48.6
Copenhagen County	5.6	0.5	148.0	4.9	159.1	5.3	11.3	62.8	79.4	317.8
Frederiksborg County	4.3	0.5	90.7	2.8	98.3	2.5	6.8	32.5	48.1	188.2
Roskilde County	2.3	0.4	60.2	1.9	64.7	1.8	4.6	18.0	29.5	118.5
West Zealand County	3.1	0.7	65.6	3.3	72.6	2.9	5.7	31.9	37.4	150.4
Storstrøm County	2.7	0.6	54.4	3.2	60.9	3.0	5.8	31.2	30.5	131.4
Bornholm County	0.5	0.2	8.7	0.9	10.3	0.5	0.9	5.6	5.1	22.4
Funen County	4.4	1.0	103.4	5.7	114.6	5.4	9.0	51.7	58.4	239.1
South Jutland County	2.4	0.9	54.4	2.7	60.3	2.4	5.4	26.5	32.3	126.9
Ribe County	2.1	0.7	50.1	2.0	54.9	2.3	4.1	21.6	29.0	112.0
Vejle County	3.3	0.7	80.8	4.0	88.8	3.7	6.8	33.0	44.1	176.4
Ringkøbing County	2.6	1.1	62.5	2.6	68.8	2.4	5.3	25.0	35.0	136.5
Århus County	5.9	1.1	149.9	7.6	164.5	8.5	11.2	56.9	84.9	326.0
Viborg County	2.4	0.9	51.9	2.0	57.2	1.9	4.2	24.2	28.9	116.4
North Jutland County	4.6	1.3	107.6	7.1	120.6	5.5	10.8	49.8	61.3	248.0

Table 143

Earnings by occupation. Private sector 2001

	Number ¹	Per hour worked, all hourly-paid and fixed-salary workers					Per month, fixed-salary earners ²	
		Earnings including	Earnings excluding nuisance bonus				Number of fixed- salary earners	Earnings Average
			Average	Lower quartile	Median	Upper quartile		
amount in DKK								
Total	1 032 502	211.12	207.27	151.07	183.27	235.03	609 482	30 849
Men	632 348	223.63	218.92	157.63	190.28	250.30	345 414	34 002
Women	400 154	187.67	185.42	139.65	170.74	212.14	264 068	26 178
Managerial work at high level, total	47 326	338.13	337.62	219.65	298.42	414.25	46 901	46 260
Men	39 411	349.06	348.54	226.96	309.42	427.59	39 054	47 861
Women	7 915	278.65	278.19	188.07	244.72	333.41	7 847	37 562
High level of qualifications, total	119 133	280.54	278.50	213.81	264.49	327.15	110 824	37 520
Men	79 998	293.34	291.11	225.07	277.90	340.53	76 057	39 466
Women	39 135	251.41	249.81	195.33	232.84	290.05	34 767	33 033
Medium-high level of qualifications, total	194 280	236.57	234.56	180.48	217.78	268.25	184 124	31 771
Men	109 968	255.95	253.34	194.75	235.24	291.23	105 742	34 656
Women	84 312	208.79	207.63	166.90	197.13	234.52	78 382	27 610
Clerical work, total	107 303	185.03	183.79	152.56	178.23	204.68	95 782	24 754
Men	25 691	196.86	194.81	158.28	186.24	218.62	21 692	26 824
Women	81 612	181.42	180.43	151.10	175.84	200.90	74 090	24 138
Sales and service work, total	123 772	154.35	151.75	119.06	140.34	171.47	72 680	21 418
Men	43 742	166.30	163.72	125.73	153.68	189.08	26 647	23 404
Women	80 030	146.72	144.10	116.50	134.25	159.34	46 033	20 035
Work within agriculture. horticulture. etc., total	1 809	167.69	164.93	142.47	155.84	179.31	938	22 861
Men	1 464	169.31	166.66	144.85	156.74	180.99	767	22 981
Women	345	159.88	156.54	133.46	148.59	168.76	171	22 265
Skilled-craftsmen-related work, total	137 266	187.55	182.30	157.17	174.78	200.09	32 828	26 123
Men	127 508	189.09	183.66	158.65	175.88	201.06	29 819	26 409
Women	9 758	164.24	161.69	134.41	152.71	179.36	3 009	22 591
Process and machine operator work, total	152 296	173.03	164.07	139.19	155.89	180.98	28 794	24 090
Men	109 945	177.85	168.20	142.64	160.62	185.52	20 995	25 023
Women	42 351	158.90	151.97	131.64	145.09	162.77	7 799	21 367
Other work, total	146 638	163.56	157.93	131.79	150.96	174.02	35 062	22 236
Men	93 128	171.82	165.15	139.64	158.64	181.55	23 721	23 057
Women	53 510	145.04	141.75	124.05	134.83	152.20	11 341	20 161
Unknown, total	2 679	217.69	212.57	145.87	171.74	234.76	1 549	33 152
Men	1 493	239.89	234.26	152.67	184.23	267.49	920	36 721
Women	1 186	185.55	181.16	138.81	157.27	199.55	629	27 475

Note 1. Earnings include contributions to pension schemes.

Note 2. The table includes all employees excluding young people under 18 and trainees.

¹ Number employed. ² Calculated for a working week of 37 hours.

Table 144

Earnings by industry. Private sector 2001

	Number ¹	Per hour worked, all hourly-paid and fixed-salary workers					Per month, fixed-salary earners ²	
		Earnings including nuisance bonus Average	Earnings excluding nuisance bonus			Number of fixed- salary earners	Earnings excluding nuisance bonus Average	
			Average	Lower quartile	Median			Upper quartile
amount in DDK							DKK	
Total	1 032 502	211.12	207.27	151.07	183.27	235.03	609 482	30 849
Men	632 348	223.63	218.92	157.63	190.28	250.30	345 414	34 002
Women	400 154	187.67	185.42	139.65	170.74	212.14	264 068	26 178
Agriculture, horticulture and quarrying, etc., total ³	5 637	240.02	229.68	173.97	205.69	251.05	2 428	37 118
Men	5 095	243.25	231.96	174.70	206.54	253.21	1 950	38 978
Women	542	213.18	210.67	168.33	196.80	236.94	478	28 712
Manufacturing, total	308 887	199.10	193.05	148.48	172.24	210.97	127 575	30 702
Men	211 809	207.70	200.76	154.42	178.03	218.18	80 743	33 210
Women	97 078	178.77	174.83	137.86	157.32	193.51	46 832	26 075
Electricity, gas and water supply, total	5 466	239.28	231.73	171.32	201.82	267.46	5 219	31 969
Men	4 095	251.85	242.34	174.82	215.56	286.21	3 873	33 686
Women	1 371	197.32	196.32	162.38	183.77	213.93	1 346	26 434
Construction, total	81 421	200.60	196.55	160.57	181.78	216.07	17 837	31 029
Men	74 933	202.64	198.28	161.77	183.02	217.67	13 330	33 145
Women	6 488	177.95	177.31	145.95	167.32	196.73	4 507	24 301
Wholesale, retail trade, hotels and restaurants, total	231 295	197.47	195.46	136.76	168.35	222.79	164 161	28 083
Men	126 693	215.90	213.54	148.35	182.40	247.04	89 950	31 272
Women	104 602	167.09	165.65	123.97	148.56	185.48	74 211	23 140
Transport, storage and communication, total	68 370	218.12	212.35	151.88	190.05	239.61	53 573	30 739
Men	45 569	228.10	221.47	152.06	194.97	251.24	32 716	33 562
Women	22 801	196.10	192.25	151.50	181.30	218.25	20 857	25 985
Financial intermediation and insurance, total	80 304	262.81	259.92	194.53	235.71	301.13	77 941	34 602
Men	37 594	301.13	297.68	223.24	279.93	348.23	36 461	40 140
Women	42 710	227.20	224.83	184.99	210.73	248.75	41 480	29 461
Real estate and renting activities, total	16 870	197.11	196.00	154.11	173.72	211.47	12 979	27 064
Men	11 142	201.94	200.54	155.69	172.58	213.16	8 472	27 896
Women	5 728	185.94	185.50	147.75	177.15	208.59	4 507	25 248
Business activities, etc., total	133 075	235.44	234.28	154.24	208.37	284.90	78 700	34 522
Men	68 778	267.50	265.90	181.27	245.28	324.64	46 758	38 775
Women	64 297	191.37	190.80	136.71	172.79	220.10	31 942	27 743
Public and personal services, total	86 625	211.93	209.63	156.88	193.29	239.03	61 339	29 165
Men	37 354	230.46	227.07	164.37	206.31	264.06	26 510	32 211
Women	49 271	197.04	195.63	152.42	185.92	221.30	34 829	26 749
Unknown, total	14 552	186.06	182.71	137.86	164.16	204.68	7 730	26 469
Men	9 286	195.57	191.47	141.96	169.84	217.01	4 651	28 190
Women	5 266	165.53	163.77	128.03	151.82	183.04	3 079	23 115

Note 1. Earnings include contributions to pension schemes.

Note 2. The table includes all employees excluding young people under 18 and trainees.

¹ Number employed. ² Calculated for a working week of 37 hours. ³ Employees on farms and fishing vessels not included.

Table 145

Earnings by level of education. Private sector 2001

	Number ¹	Per hour worked, all hourly-paid and fixed-salary workers					Per month, fixed-salary earners ²	
		Earnings including nuisance bonus Average	Earnings excluding nuisance bonus				Number of fixed- salary earners	Earnings excluding nuisance bonus Average
			Average	Lower quartile	Median	Upper quartile		
amount in DKK							DKK	
Total	1 032 502	211.12	207.27	151.07	183.27	235.03	609 482	30 849
Men	632 348	223.63	218.92	157.63	190.28	250.30	345 414	34 002
Women	400 154	187.67	185.42	139.65	170.74	212.14	264 068	26 178
Basic school, total	272 258	176.84	171.33	136.74	157.81	188.78	101 497	25 809
Men	158 511	185.30	178.60	142.87	163.70	194.46	50 386	28 058
Women	113 747	162.73	159.21	128.93	147.16	177.36	51 111	23 181
Preparatory education, total	722	136.35	132.71	110.49	123.77	143.92	194	18 964
Men	249	139.47	135.88	114.34	127.18	147.04	76	19 521
Women	473	134.53	130.87	109.20	121.56	140.93	118	18 589
Upper-secondary education, total	69 588	210.91	206.59	132.32	178.15	246.16	33 729	31 638
Men	32 587	236.46	231.23	145.51	198.28	282.06	17 272	35 660
Women	37 001	180.21	176.99	122.99	157.60	210.29	16 457	26 467
Vocational education at second level, total	34 096	199.50	197.03	140.47	174.54	226.51	22 700	28 089
Men	17 389	219.55	216.41	145.56	189.53	255.92	11 018	31 882
Women	16 707	178.04	176.28	136.74	163.74	202.43	11 682	24 348
Basic vocational education, total	435 771	202.88	199.05	155.02	181.89	221.87	269 187	28 627
Men	284 314	211.18	206.40	159.63	185.73	229.30	150 352	31 122
Women	151 457	185.39	183.57	144.13	173.28	208.71	118 835	25 096
Short-cycle further education, total	53 568	222.15	219.97	171.80	204.55	248.74	45 584	30 410
Men	29 743	235.11	232.17	179.70	214.94	263.60	24 212	32 871
Women	23 825	204.21	203.09	162.68	191.16	228.88	21 372	27 323
Medium-cycle further education, total	71 434	276.96	274.82	200.11	253.11	321.20	63 486	37 769
Men	48 701	297.21	294.89	219.79	274.71	341.46	44 931	40 782
Women	22 733	225.52	223.86	175.17	205.82	253.17	18 555	29 985
Bachelors, total	15 368	233.43	231.98	159.20	204.03	270.17	11 270	32 681
Men	7 347	269.27	267.47	177.83	235.74	322.81	5 508	38 480
Women	8 021	198.40	197.28	150.57	183.85	226.22	5 762	27 066
Long-cycle further education, total	48 436	315.76	314.29	229.08	289.99	370.12	45 735	42 827
Men	32 602	333.65	332.04	242.93	307.53	390.03	30 940	45 607
Women	15 834	275.68	274.54	207.81	256.57	322.17	14 795	36 614
Research education, total	1 823	343.17	342.42	271.68	323.60	397.74	1 780	46 100
Men	1 370	351.81	351.05	276.90	335.98	403.52	1 338	47 569
Women	453	316.95	316.26	253.57	299.44	360.74	442	41 638
Unknown, total	29 438	217.34	211.86	141.68	177.26	241.55	14 320	33 870
Men	19 535	231.17	224.56	148.42	183.79	261.38	9 381	37 028
Women	9 903	183.72	180.98	130.50	159.81	209.17	4 939	27 120

Note 1. Earnings include contributions to pension schemes.

Note 2. The table includes all employees excluding young people under 18 and trainees.

¹ Number employed. ² Calculated for a working week of 37 hours.

Table 146

Earnings by occupation. Local government sector 2001

	Number ¹	Per hour worked, all hourly-paid and fixed-salary workers					Per month, fixed-salary earners ²	
		Earnings including nuisance bonus Average	Earnings excluding nuisance bonus			Number of fixed-salary earners	Earnings excluding nuisance bonus Average	
			Average	Lower quartile	Median			Upper quartile
amount in DKK							DKK	
Total	621 640	194.86	188.54	149.43	177.16	208.46	544 866	24 505
Men	143 145	217.96	211.63	163.64	199.30	236.27	124 795	28 353
Women	478 495	187.33	181.01	146.73	172.15	200.95	420 071	23 250
Managerial work at high level, total	13 441	266.69	264.66	200.76	240.31	297.14	13 404	35 751
Men	6 805	297.96	295.67	232.55	273.03	334.19	6 780	40 340
Women	6 636	233.73	231.98	192.65	207.77	247.78	6 624	30 918
High level of qualification, total	127 184	241.63	236.46	203.15	217.39	248.86	123 979	31 033
Men	50 170	254.99	248.32	206.08	225.53	263.30	48 745	33 097
Women	77 014	232.53	228.37	200.72	213.85	237.68	75 234	29 628
Medium-high of qualification, total	157 157	197.27	190.70	168.45	183.30	200.35	151 412	24 023
Men	24 291	198.29	192.68	170.17	187.66	207.43	23 137	25 126
Women	132 866	197.07	190.30	168.15	182.60	199.02	128 275	23 806
Clerical work, total	39 061	174.77	173.43	157.12	170.00	181.60	37 497	22 309
Men	3 809	172.22	170.93	154.04	169.77	183.69	3 350	22 842
Women	35 252	175.03	173.69	157.41	170.02	181.37	34 147	22 255
Sales and service work, total	211 239	160.01	150.65	131.17	145.12	159.44	157 899	19 341
Men	29 221	158.11	147.55	120.67	140.25	164.66	18 016	19 101
Women	182 018	160.25	151.04	132.45	145.42	158.94	139 883	19 369
Work within agriculture, horticulture, etc., total	1 252	184.95	181.64	162.47	176.12	191.42	1 218	23 603
Men	1 003	185.31	181.60	163.76	176.70	191.68	983	23 885
Women	249	183.15	181.83	154.29	167.65	189.94	235	22 196
Skilled-craftsmen-related work, total	3 657	191.82	184.94	166.96	179.68	194.63	3 560	24 003
Men	3 416	192.49	185.28	167.28	179.99	194.79	3 341	24 066
Women	241	180.06	178.76	160.99	174.31	191.54	219	22 859
Process and machine operator work, total	519	176.90	168.64	151.06	163.67	179.64	500	21 499
Men	483	177.73	169.20	151.21	164.49	179.96	466	21 535
Women	36
Other work, total	58 202	155.16	150.68	133.21	146.11	160.63	47 260	19 644
Men	19 547	162.85	157.62	141.14	154.24	168.47	16 309	20 982
Women	38 655	149.93	145.96	129.58	141.11	153.76	30 951	18 712
Unknown, total	9 928	209.59	205.80	137.97	193.05	260.19	8 137	28 945
Men	4 400	242.48	237.66	176.36	238.13	286.18	3 668	33 667
Women	5 528	177.45	174.66	121.19	152.40	212.96	4 469	24 175

Note 1. Earnings include contributions to pension schemes.

Note 2. The table includes all employees excluding young people under 18 and trainees.

¹ Number employed. ² Calculated for a working week of 37 hours.

Table 147

Earnings by industry. Local government sector 2001

	Number ¹	Per hour worked, all hourly-paid and fixed-salary workers					Per month, fixed-salary earners ²	
		Earnings including nuisance bonus Average	Earnings excluding nuisance bonus			Number of fixed- salary earners	Earnings excluding nuisance bonus Average	
			Average	Lower quartile	Median			Upper quartile
amount in DKK							DKK	
Total	621 640	194.86	188.54	149.43	177.16	208.46	544 866	24 505
Men	143 145	217.96	211.63	163.64	199.30	236.27	124 795	28 353
Women	478 495	187.33	181.01	146.73	172.15	200.95	420 071	23 250
Energy and water supply, total	3 855	216.17	210.13	169.51	189.81	231.09	3 782	28 020
Men	2 843	221.42	213.69	170.06	193.46	238.18	2 809	28 737
Women	1 012	200.18	199.30	168.20	182.09	204.94	973	25 834
Public administration, etc. total	72 959	210.50	208.91	171.63	191.15	226.91	70 127	27 753
Men	23 613	238.16	235.18	184.26	218.75	263.58	22 711	31 881
Women	49 346	196.36	195.47	167.92	184.14	206.33	47 416	25 640
Teaching, total	107 825	213.57	210.12	185.11	207.67	225.75	99 352	27 858
Men	37 814	220.11	216.30	193.31	211.58	236.81	34 476	29 206
Women	70 011	209.66	206.43	181.86	205.70	220.71	64 876	27 053
Health service, etc., total	99 904	226.35	213.51	166.74	189.26	221.54	94 536	26 009
Men	17 563	288.34	270.09	176.03	222.81	365.57	16 395	34 199
Women	82 341	212.15	200.55	165.50	186.25	211.43	78 141	24 152
Social institutions, etc., total	296 160	170.66	163.70	138.12	154.19	178.71	241 482	21 182
Men	41 524	175.32	168.93	134.12	163.01	191.21	30 785	22 379
Women	254 636	169.97	162.93	138.41	153.36	176.81	210 697	21 012
Refuse collection, associations, and entertainment, total	22 138	181.73	177.75	148.87	168.07	197.53	20 028	23 849
Men	12 910	182.26	176.88	148.96	165.69	191.82	11 754	23 787
Women	9 228	180.93	179.08	148.69	172.96	202.49	8 274	23 944
Other industries, total	18 799	200.65	194.25	143.92	169.44	225.48	15 559	26 338
Men	6 878	223.74	217.22	155.01	191.08	268.21	5 865	30 072
Women	11 921	182.69	176.39	138.15	160.09	192.38	9 694	23 367

Note 1. Earnings include contributions to pension schemes.

Note 2. The table includes all employees excluding young people under 18 and trainees.

¹ Number employed. ² Calculated for a working week of 37 hours.

Table 148

Earnings by level of education. Local government sector 2001

	Number ¹	Per hour worked, all hourly-paid and fixed-salary workers					Per month, fixed-salary earners ²	
		Earnings including nuisance bonus Average	Earnings excluding nuisance bonus				Number of fixed- salary earners	Earnings excluding nuisance bonus Average
			Average	Lower quartile	Median	Upper quartile		
amount in DKK							DKK	
Total	621 640	194.86	188.54	149.43	177.16	208.46	544 866	24 505
Men	143 145	217.96	211.63	163.64	199.30	236.27	124 795	28 353
Women	478 495	187.33	181.01	146.73	172.15	200.95	420 071	23 250
Basic school, total	118 100	161.83	156.56	135.35	148.79	167.91	94 378	20 457
Men	23 587	172.71	166.85	138.80	157.75	182.00	18 356	22 182
Women	94 513	159.11	153.98	134.87	147.31	164.17	76 022	20 026
Upper-secondary education, total	47 886	171.12	164.38	118.98	148.20	186.33	27 369	22 527
Men	13 311	186.34	179.30	121.74	159.25	206.36	8 064	25 050
Women	34 575	164.25	157.65	118.01	144.61	179.46	19 305	21 344
Vocational education at second level, total	8 309	167.15	162.89	123.03	154.52	183.07	5 300	22 049
Men	2 812	171.83	166.90	120.48	155.21	193.68	1 732	23 404
Women	5 497	164.73	160.81	124.87	154.40	179.72	3 568	21 374
Basic vocational education, total	186 359	176.69	169.69	142.51	159.75	182.95	169 266	21 884
Men	35 628	193.33	187.44	153.73	175.72	205.13	32 205	24 941
Women	150 731	172.35	165.06	140.90	156.30	177.90	137 061	21 086
Short-cycle further education, total	18 725	195.20	190.19	164.05	184.43	206.05	17 289	24 117
Men	3 668	204.52	198.50	166.91	191.39	219.21	3 266	26 295
Women	15 057	192.89	188.12	163.32	182.93	203.64	14 023	23 584
Medium-cycle further education, total	194 155	211.20	205.50	178.03	199.42	217.90	187 631	26 433
Men	41 808	222.28	217.91	191.91	210.44	232.37	40 307	29 091
Women	152 347	207.75	201.63	175.63	194.33	213.73	147 324	25 606
Bachelors, total	3 408	180.69	175.80	133.18	167.12	195.50	2 190	24 198
Men	1 265	186.65	181.34	135.27	172.57	207.36	786	26 043
Women	2 143	177.02	172.39	131.25	163.67	188.92	1 404	23 101
Long-cycle further education, total	35 738	297.08	287.49	230.41	261.71	321.10	34 885	37 504
Men	18 505	315.34	303.46	241.34	270.27	362.20	18 097	40 079
Women	17 233	275.24	268.39	220.21	253.27	285.37	16 788	34 423
Unknown, total	8 960	186.68	177.93	135.55	164.93	202.19	6 558	23 622
Men	2 561	205.62	195.46	143.45	177.16	222.07	1 982	26 268
Women	6 399	177.97	169.87	132.47	159.55	193.03	4 576	22 362

Note 1. Earnings include contributions to pension schemes.

Note 2. The table includes all employees excluding young people under 18 and trainees.

¹ Number employed. ² Calculated for a working week of 37 hours.

Tabel 149

Earnings by occupation. Central government sector 2001

	Number ¹	Per hour worked, hourly-paid and fixed-salary workers					Per month, fixed-salary earners ²	
		Earnings including nuisance bonus Average	Earnings excluding nuisance bonus				Number of fixed- salary earners	Earnings excluding nuisance bonus Average
			Average	Lower quartile	Median	Upper quartile		
amount in DKK							DKK	
Total	218 236	205.03	200.09	157.29	184.65	227.81	200 738	27 661
Men	132 353	213.93	207.41	160.75	192.73	237.52	123 193	28 669
Women	85 883	190.87	188.46	152.98	174.15	211.85	77 545	26 009
Military work, total	25 669	198.17	187.69	148.42	173.74	206.01	23 509	25 890
Men	24 395	198.97	188.40	149.07	174.64	206.81	22 317	25 999
Women	1 274	182.23	173.70	138.49	159.32	185.58	1 192	23 712
Managerial work at high level, total	3 814	341.34	340.87	271.10	317.77	383.13	3 814	47 325
Men	2 813	348.13	347.57	275.35	326.87	391.64	2 813	48 314
Women	1 001	321.93	321.74	259.26	300.42	366.41	1 001	44 497
High level of qualification, total	60 339	249.43	247.98	208.11	238.90	274.82	59 851	34 258
Men	36 016	257.12	255.45	214.53	247.73	281.70	35 806	35 421
Women	24 323	237.32	236.24	198.36	227.04	262.12	24 045	32 426
Medium-high of qualification, total	32 235	197.54	194.93	167.64	186.23	213.60	31 566	26 668
Men	14 237	214.54	210.21	179.67	202.77	229.34	13 885	28 977
Women	17 998	183.59	182.40	162.14	176.79	194.45	17 681	24 779
Clerical work, total	54 422	159.33	154.98	139.25	153.85	166.24	45 389	21 064
Men	23 268	158.14	151.92	134.48	150.92	163.25	17 885	20 770
Women	31 154	160.17	157.13	142.29	156.03	168.17	27 504	21 263
Sales and service work, total	16 927	197.99	185.19	159.98	184.83	206.21	16 586	25 077
Men	13 316	203.39	190.44	165.22	191.62	209.57	13 253	25 801
Women	3 611	175.57	163.42	142.83	159.02	178.00	3 333	21 975
Work within agriculture, horticulture, etc., total	607	168.97	166.94	149.87	163.84	176.22	502	22 973
Men	412	170.62	168.31	151.40	165.81	179.02	364	23 266
Women	195	164.19	162.93	145.25	158.87	171.18	138	22 048
Skilled-craftsmen-related work, total	6 071	190.64	183.52	169.53	179.88	193.39	5 993	25 029
Men	5 764	191.04	183.67	169.69	180.20	193.66	5 713	25 042
Women	307	182.43	180.45	166.57	174.83	187.99	280	24 740
Process and machine operator work, total	5 850	199.50	179.57	161.80	176.52	192.37	5 820	24 458
Men	5 513	199.98	179.66	161.80	176.49	192.63	5 488	24 478
Women	337	191.78	178.21	161.93	176.77	189.25	332	24 126
Other work, total	12 302	152.49	148.42	128.07	144.23	158.68	7 708	21 251
Men	6 619	162.75	157.09	142.08	151.63	165.38	5 669	21 543
Women	5 683	137.95	136.14	120.11	129.05	142.80	2 039	20 295
Unknown, total	664	202.12	201.37	154.85	190.43	250.44	410	29 274
Men	347	207.09	206.04	155.89	190.98	254.42	206	30 037
Women	317	197.23	196.78	149.16	187.46	248.06	204	28 529

Note 1. Earnings include contributions to pension schemes.

Note 2. The table includes all employees excluding young people under 18 and trainees.

¹ Number employed. ² Calculated for a working week of 37 hours.

Table 150

Earnings by industry. Central government sector 2001

	Number ¹	Per hour worked, hourly-paid and fixed-salary workers					Per month, fixed-salary earners ²	
		Earnings including nuisance bonus Average	Earnings excluding nuisance bonus			Number of fixed- salary earners	Earnings excluding nuisance bonus Average	
			Average	Lower quartile	Median			Upper quartile
amount in DKK							DKK	
Total	218 236	205.03	200.09	157.29	184.65	227.81	200 738	27 661
Men	132 353	213.93	207.41	160.75	192.73	237.52	123 193	28 669
Women	85 883	190.87	188.46	152.98	174.15	211.85	77 545	26 009
Agriculture, horticulture, etc., total	353	227.60	227.46	199.92	222.69	247.88	352	31 566
Men	258	240.02	239.86	214.27	224.17	253.42	258	33 344
Women	95	191.02	190.95	159.70	165.92	226.42	94	26 324
Construction, total	1 849	195.60	175.65	151.48	164.45	183.61	1 836	24 155
Men	1 688	196.27	174.92	150.88	163.82	181.99	1 677	24 095
Women	161	187.33	184.63	159.04	174.98	194.88	159	24 889
Transport, total	14 953	205.61	191.42	161.48	181.00	203.02	14 849	26 114
Men	11 309	211.13	195.30	165.18	185.01	205.54	11 268	26 702
Women	3 644	188.44	179.36	149.18	169.07	194.31	3 581	24 277
Postal services and telecommunication, total	36 933	161.94	155.68	134.52	151.06	165.80	29 493	21 251
Men	21 803	163.61	156.77	135.31	152.06	167.11	17 252	21 486
Women	15 130	159.43	154.05	133.39	149.52	163.88	12 241	20 902
Business activities, total	13 474	215.02	213.97	168.27	196.77	252.06	12 852	29 398
Men	6 430	233.18	231.76	178.93	216.00	273.75	6 237	31 974
Women	7 044	196.18	195.51	161.31	179.99	219.57	6 615	26 671
Public administration, etc., total	84 265	209.75	204.18	161.05	186.11	226.03	81 123	27 955
Men	56 252	216.07	208.60	162.85	192.20	231.05	53 803	28 660
Women	28 013	197.32	195.48	158.98	177.59	211.52	27 320	26 568
Teaching, total	49 947	218.16	216.29	171.96	211.04	250.35	45 917	30 480
Men	26 663	236.28	234.01	194.06	224.51	268.88	25 643	32 596
Women	23 284	196.25	194.88	157.11	185.08	227.03	20 274	27 685
Social institutions, etc., total	3 342	192.08	187.10	158.06	176.91	203.59	2 660	25 603
Men	1 368	194.16	187.27	156.66	174.28	202.08	1 039	25 926
Women	1 974	190.66	186.99	159.09	178.94	204.30	1 621	25 391
Refuse collection, associations, entertainment, total	3 199	204.22	202.89	162.51	189.15	233.25	2 743	28 257
Men	1 580	211.50	209.76	165.50	195.01	245.95	1 379	29 186
Women	1 619	196.71	195.81	161.22	183.10	218.97	1 364	27 271
Other occupations, total ³	9 921	227.73	226.97	178.15	224.57	267.94	8 913	32 094
Men	5 002	249.69	248.71	202.46	248.00	275.46	4 637	34 863
Women	4 919	203.60	203.09	163.64	191.31	238.15	4 276	28 869

Note 1. Earnings include contributions to pension schemes.

Note 2. The table includes all employees excluding young people under 18 and trainees.

¹ Number employed. ² Calculated for a working week of 37 hours. ³ Including wholesale and retail trade, financial mediation and insurance, real estate and renting activities, and health service, etc.

Table 151

Earnings by level of education. Central government sector 2001

	Number ¹	Per hour worked, hourly-paid and fixed-salary workers					Per month, fixed-salary earners ²	
		Earnings including nuisance bonus Average	Earnings excluding nuisance bonus				Number of fixed- salary earners	Earnings excluding nuisance bonus Average
			Average	Lower quartile	Median	Upper quartile		
amount in DKK							DKK	
Total	218 236	205.03	200.09	157.29	184.65	227.81	200 738	27 661
Men	132 353	213.93	207.41	160.75	192.73	237.52	123 193	28 669
Women	85 883	190.87	188.46	152.98	174.15	211.85	77 545	26 009
Basic school, total	42 273	173.02	166.58	143.40	159.16	180.54	36 247	22 950
Men	25 878	178.86	170.78	146.87	161.39	184.77	23 107	23 378
Women	16 395	163.69	159.88	136.70	155.39	174.40	13 140	22 186
Upper-secondary education, total	18 102	189.75	183.43	136.18	162.66	207.43	13 460	25 843
Men	11 469	192.59	185.46	137.33	162.42	211.50	8 857	26 126
Women	6 633	184.40	179.60	132.90	163.20	202.57	4 603	25 288
Vocational education at second level, total	5 753	164.84	158.78	132.93	152.75	172.41	4 566	21 968
Men	3 565	165.91	157.83	130.52	150.46	172.26	2 691	22 039
Women	2 188	163.37	160.09	136.93	154.97	172.72	1 875	21 876
Basic vocational education, total	66 802	182.11	176.54	153.42	170.71	192.70	63 751	24 113
Men	38 407	190.26	182.10	156.73	177.40	199.91	36 803	24 931
Women	28 395	170.95	168.93	149.82	164.08	181.53	26 948	22 971
Short-cycle further education, total	20 593	204.88	198.31	170.63	194.12	217.60	20 160	27 044
Men	13 483	215.56	207.16	183.11	204.74	224.22	13 268	28 313
Women	7 110	182.80	180.03	160.29	173.66	191.87	6 892	24 406
Medium-cycle further education, total	16 923	230.60	226.98	192.13	218.71	252.96	16 404	31 411
Men	10 221	240.97	236.35	198.96	229.20	267.05	9 999	32 811
Women	6 702	214.08	212.08	184.91	207.77	230.74	6 405	29 164
Bachelor, total	3 774	190.19	187.06	158.43	177.52	210.21	2 933	26 479
Men	1 880	198.80	194.49	161.62	184.28	225.12	1 421	27 848
Women	1 894	181.18	179.29	156.05	172.71	193.42	1 512	25 078
Long-cycle further education, total	38 098	273.21	271.67	227.63	263.03	296.63	37 824	37 592
Men	23 439	282.74	280.84	236.95	270.03	307.83	23 271	38 980
Women	14 659	257.03	256.09	216.66	246.90	279.24	14 553	35 235
Unknown, total	5 918	220.50	215.19	164.46	202.58	253.14	5 393	30 170
Men	4 011	233.13	226.44	171.49	217.25	270.03	3 776	31 511
Women	1 907	192.46	190.22	155.49	178.53	221.23	1 617	26 943

Note 1. Earnings include contributions to pension schemes.

Note 2. The table includes all employees excluding young people under 18 and trainees.

¹ Number employed. ² Calculated for a working week of 37 hours.

Table 152 (continued) Membership of employees' trade unions 2002

Per 1 january	Number of members			Number of members	
	Total	Of whom women		Total	Of whom women
Danish Confederation of Trade Unions¹ (LO)	1 433 064	696 412	Danish Musicians' Union	2 852	428
			Dansk Navigatørforening	2 926	92
			Danish Association of Social Workers ²	8 209	6 485
Blik- og Rørarbejderforbundet i Danmark	9 283	22	Danish Nurses' Organization	53 325	51 405
Danish Artist Union	1 523	688	Dansk Sø-Restaurations Forening	1 287	666
Dansk El-Forbund	30 228	278	Dansk Tandplejerforening	798	774
Dansk Frisør og Kosmetiker Forbund	5 446	5 144	Dansk Teaterforbund	2 204	1 088
Dansk Jernbaneforbund	5 695	566	Danske Afspændingspædagoger	600	570
Dansk Metal	135 043	2 242	Danske Bioanalytikere	5 711	5 448
Dansk Funktionærforbund	22 001	4 305	Danske Forsikringsfunktionærers Landsforen.	6 736	4 715
Danish Trade Union of Public Employees	194 841	171 454	Danske Forsyningss. Funktionærsammensl.	621	258
Forbundet Træ-Industri-Byg i Danmark	72 135	8 817	Association of Danish Physiotherapists	4 852	4 253
Union of Commercial and Clerical Employees in Denmark	377 228	272 350	Danske Produktionshøjskoler Lærerforening	752	362
Hærens Konstabel- og Korporalforening	4 373	251	Ass. of Danish Forest and Landscape Engineers	560	30
Women Workers' Union in Denmark	78 830	78 830	Danish Association of Midwives	1 344	1 339
Malerforbundet i Danmark	13 773	2 975	Efterskolernes Lærerforening	2 440	1 188
Nærings- og			Ergoterapeutforeningen	4 724	4 513
Nydelsesmiddelarbejderforbundet	39 205	13 401	Ernærings- og Husholdningsøkonomfor.	738	710
Pædagogisk Medhjælper Forbund	27 118	23 688	Farmakonomforeningen	4 332	4 292
Restaurationsbranchens Forbund	23 415	14 897	Film- og TV-arbejderforeningen ³	749	509
Socialpædagogernes Landsforbund	29 809	21 760	Finansforbundet	44 421	24 350
Specialarbejderforbundet i Danmark	317 625	56 142	Foreningen af Mejeriledere og Funktionærer	516	40
Danish Association of Professional Technicians	32 162	12 897	Radiographer's Union in Denmark	1 007	725
Danish Union of Telecommunications Workers	13 331	5 705	Frederiksberg Kommunalforening	593	400
			Frie Grundskolers Lærerforening	4 487	2 940
Salaried Employees' and Civil Servants' Confederation	356 058	237 975	Funktionærforeningen Carlsberg Tuborg ⁶	940	338
			Funktionærforeningen i FDB/COOP Danmark	898	335
National Federation of Early Childhood Teachers and Youth Educators	50 446	43 224	Gentofte Kommunalforening	513	386
State Public Servants Trade Union	29 490	8 898	Halinspektørforeningen	625	38
Of which:			Jordbrugsteknikere i Danmark	1 118	257
Dansk Kirkemusiker Forening ⁶	814	513	Konstruktørforeningen	2 456	317
Dansk Teknisk Lærerforbund	4 288	1 004	Kort- og Landmålingsteknikernes Forening	562	141
Dansk Told- og Skatteforbund	3 369	1 789	Københavns Kommunalforening	4 632	2 879
Foreningen af Tekniske og			National Federation of Teachers in Adult and Youth Education	5 571	3 766
Administrative Tjenestemænd (TAT)	1 182	668	Lederforeningen i TeleDanmark	1 295	537
Forsvarets Civil-Etat	1 772	312	LederForum	531	372
Handelskolernes Lærerforening	2 068	974	Luftfartsfunktionærerne	1 680	1 092
Kriminalforsorgsforeningen	523	281	Lærersammensl. ved Arb.m.uddannelserne	1 471	346
Luftfartsvæsenets Personaleforening	869	232	Merkantilt Forum	2 030	1 177
Organisationsdannelsen af			Organisationen af Sergenter i Søværnet	682	17
CO II-Tjenestemænd i Kirkeministeriet	1 378	748	Personaleforeningen for Komm. Landsfor.	531	287
Politiforbundet i Danmark	11 853	2 010	PROSA – Ass. of Computer Professionals	7 567	1 513
Other unions	1 374	367	SAFU Sammenslutningen af Funktionærer	509	239
Cabin Union Denmark	2 290	1 374	Sergentgrp. Fællesorganisation – Hæren	2 165	49
CS-Flyvevåbenet	3 237	263	Speciallærerforeningen af 1981	1 396	915
Danish Union of Teachers	62 382	41 368	Økonomaforeningen	8 059	7 940
Dansk Merkonomforening	1 479	634	Other organizations ³	4 719	1 693

Table 152

Membership of employees' trade unions 2002

Per 1 january	Number of members			Number of members	
	Total	Of whom women		Total	Of whom women
Danish Association of Managers and Executives	75 539	13 588	Association of Danish Officers	3 890	120
Dansk Formands Forening	1 840	30	Danish National Union of Upper Secondary School Teachers	10 717	5 405
Danish Association of Managers and Executives	73 699	13 558	Society of Danish Engineers	45 484	5 461
Danish Confederation of Professional Associations (AC)⁴	160 547	59 848	Danish Federation of Graduates in Agricultural Science and Economy, Forestry, Horticulture and Landscape Architecture	3 533	1 208
Danish Union of Librarians	4 441	3 424	Danish Dental Association	2 337	1 287
Association of Danish Business Economists	10 943	3 402	Other organizations	690	210
Association of Danish Lawyers and Economists	22 988	10 343	Outside joint organizations⁴	125 310	49 734
Association of Danish Pharmacists	2 756	2 112	Brancheafdelingen Trafik & Jernbane ³	4 209	1 684
Danish Association of Masters and PhDs	20 561	9 799	Central Association of Permanent Defence Personnel	6 706	380
Danish Psychologists' Association	3 180	2 231	Danish Prison Officers Union	2 968	839
Federation of Danish Architects	4 047	1 520	Danish Union of Journalists	9 369	3 598
Danish Medical Association	12 617	4 707	Danish Union of Sales Representatives	23 926	3 045
Danish Association of Chartered Surveyors	696	131	Fagforeningen Danmark ³	2 816	1 267
Association of Ministers in the Danish Church	2 499	1 074	Forb. af Kirke- og Kirkegårdsansatte	1 945	577
Danish Association of Business Language Graduates	5 847	5 536	Forbundet for Tjenestemænd ved Fødevareministeriet og Undervisningsministeriet	578	62
Association of Danish Veterinarians and Food Scientists	1 991	1 189	Funktionærkartellet/Teknikersammens. ³	9 380	4 221
Federation of Associations of Graduates at Academies of Music	1 330	688	Agricultural Technologists in Denmark	1 118	257
			Christian Trade Union Movement	62 295	33 804

¹ Including sleeping members (pensioners and people on early-retirement pay), conscripts, etc. ² Excluding civil servants. ³ Estimated figure for women. ⁴ Only members who are employed. ⁵ Compared with 2001 and backwards Centralforeningen for Danske Assurandører is now part of Finansforbundet. ⁶ New organisations under FTF. ⁷ From 2002 and onwards Maskinmestrenes Forening is part of Ingeniørforeningen i Danmark under Akademikernes Centralorganisation.

Source: Main organizations and unions outside main organisations.

Table 153

Members of unemployment insurance funds

	2001	2002 ¹
Number of funds	35	35
Number insured against unemployment, total	2 365 687	2 360 506
Full-time insured	2 307 256	2 307 217
Of whom funds with: LO ²	1 232 823	1 254 364
FTF ³	339 640	359 276
Managers ⁴	88 300	83 746
AC ⁵	192 336	214 420
Other organizations ⁶	454 157	395 411
Part-time insured	58 431	53 289
Of whom funds with: LO ²	37 798	34 816
FTF ³	9 190	8 455
Managers ⁴	85	70
AC ⁵	1 074	1 014
Other organizations ⁶	10 284	8 934

¹ Figures are not comparable to 2001 because of changes in insurance funds. ² Danish Confederation of Trade Unions. ³ Salaried Employees' and Civil Servants' Confederation. ⁴ Danish Association of Management and Executives. ⁵ Danish Confederation of Professional Organisations. ⁶ Incl. unemployment insurance funds which are members of different confederations.

Source: The National Directorate of Labour.

Table 154**Unemployment benefits, early retirement pay and transitional allowance**

	2001	2002
Average number of people receiving unemployment benefits	109 179	110 408
Unemployment benefits paid (excl. holiday pay), in DKK mio.	16 009.0	16 713.6
Benefits paid, DKK mio.	17 279.1	17 874.7
Early retirement pay paid, DKK mio.	19 374.3	20 867.9
Transitional allowances paid, DKK mio.	2 469.2	1 969.8
Net grants from central government: DKK mio.	26 850.3	28 342.8
Percentage of total paid	68.6	69.5

Source: The National Directorate of Labour.

Table 155

Recipients of unemployment benefits by reason for unemployment 2002

	Number of recipients	Average number of recipients	Benefits paid, (excl. holiday pay), total	Average benefits paid
	persons		DKK mio.	DKK
Total	367 100	110 408	16 626,4	150 590
Made redundant by employer	205 740	61 904	9 464,9	152 897
Temporarily sent home	7 301	1 259	191,3	151 943
Resigned	22 377	7 324	1 104,7	150 846
Certificate of release work sharing	11 278	1 437	215,6	150 053
School leaver or completed national service	21 624	5 719	738,5	129 135
Stopped after:				
Completed activation	27 145	10 231	1 540,1	150 535
Education leave	2 284	821	123,0	149 928
Parental leave	4 426	1 136	167,0	147 073
Maternity leave	2 270	648	95,9	148 080
Stopped after:				
Temporary absence from the labour market	2 776	939	140,7	149 837
Stopped self-employment	9 631	4 209	626,5	148 865
Other	44 833	13 096	1 966,1	150 121
Reason for unemployment unknown ¹	5 415	1 687	252,0	149 355

¹ Recipients of daily cash benefits were unemployed when the benefit-payment register (DUR) was established on 1 July 1997; therefore detailed reasons for unemployment are unknown.

Table 156

Commuting to and from work in municipalities with over 25,000 inhabitants 2002

	Persons with place of work in the municipality			Employed persons resident in the municipality			Incoming commuters, net		
	Men	Women	Total	Men	Women	Total	Men	Women	Total
	persons								
Copenhagen	171 051	166 903	337 954	138 918	128 920	267 838	32 133	37 983	70 116
Århus	90 945	80 776	171 721	77 769	72 116	149 885	13 176	8 660	21 836
Odense	50 421	49 668	100 089	47 494	43 641	91 135	2 927	6 027	8 954
Aalborg	50 562	44 072	94 634	43 401	38 232	81 633	7 161	5 840	13 001
Frederiksberg	20 559	23 053	43 612	25 439	24 788	50 227	- 4 880	- 1 735	- 6 615
Esbjerg	25 943	20 637	46 580	22 259	18 932	41 191	3 684	1 705	5 389
Gentofte	15 395	18 217	33 612	18 209	17 927	36 136	- 2 814	290	- 2 524
Kolding	19 151	17 390	36 541	17 546	15 460	33 006	1 605	1 930	3 535
Randers	16 676	15 916	32 592	16 375	14 021	30 396	301	1 895	2 196
Gladsaxe	19 508	16 097	35 605	16 134	15 103	31 237	3 374	994	4 368
Helsingør	11 686	11 757	23 443	15 896	14 789	30 685	- 4 210	- 3 032	- 7 242
Herning	19 918	16 401	36 319	17 268	14 538	31 806	2 650	1 863	4 513
Horsens	16 691	14 481	31 172	15 947	13 289	29 236	744	1 192	1 936
Vejle	18 507	17 289	35 796	15 140	13 729	28 869	3 367	3 560	6 927
Silkeborg	13 869	13 194	27 063	14 848	13 410	28 258	- 979	- 216	- 1 195
Roskilde	15 454	17 098	32 552	14 564	13 891	28 455	890	3 207	4 097
Lyngby-Taarbæk	17 589	14 305	31 894	13 424	12 537	25 961	4 165	1 768	5 933
Hvidovre	14 506	12 495	27 001	13 146	12 098	25 244	1 360	397	1 757
Fredericia	15 487	11 788	27 275	13 289	11 300	24 589	2 198	488	2 686
Greve	9 097	7 945	17 042	14 070	13 256	27 326	- 4 973	- 5 311	- 10 284
Næstved	11 592	11 548	23 140	12 720	11 387	24 107	- 1 128	161	- 967
Ballerup	20 829	16 640	37 469	12 214	11 450	23 664	8 615	5 190	13 805
Høje Taastrup	18 659	14 079	32 738	13 200	11 692	24 892	5 459	2 387	7 846
Viborg	12 509	12 885	25 394	12 086	10 902	22 988	423	1 983	2 406
Svendborg	9 424	9 900	19 324	10 687	9 625	20 312	- 1 263	275	- 988
Holstebro	12 655	11 442	24 097	11 752	10 504	22 256	903	938	1 841
Tårnby	16 199	10 810	27 009	10 666	10 141	20 807	5 533	669	6 202
Køge	10 243	9 282	19 525	10 958	9 949	20 907	- 715	- 667	- 1 382
Hillerød	11 126	13 802	24 928	10 228	9 874	20 102	898	3 928	4 826
Slagelse	11 037	9 670	20 707	9 746	8 561	18 307	1 291	1 109	2 400
Rødovre	10 191	7 364	17 555	9 446	8 755	18 201	745	- 1 391	- 646
Hjørring	9 656	9 374	19 030	9 457	8 350	17 807	199	1 024	1 223
Brøndby	16 331	9 425	25 756	8 657	7 737	16 394	7 674	1 688	9 362
Frederikshavn	10 274	7 930	18 204	9 192	7 609	16 801	1 082	321	1 403
Holbæk	7 964	9 177	17 141	9 228	8 390	17 618	- 1 264	787	- 477
Haderslev	7 599	7 413	15 012	8 416	7 224	15 640	- 817	189	- 628
Søllerød	8 572	6 908	15 480	8 385	7 747	16 132	187	- 839	- 652
Sønderborg	8 243	8 741	16 984	7 619	6 810	14 429	624	1 931	2 555
Ringsted	9 109	6 918	16 027	8 634	7 360	15 994	475	- 442	33
Thisted	8 398	7 453	15 851	8 312	7 010	15 322	86	443	529
Albertslund	13 692	8 004	21 696	7 911	7 093	15 004	5 781	911	6 692
Skive	10 278	7 744	18 022	8 071	6 717	14 788	2 207	1 027	3 234
Herlev	9 228	8 678	17 906	7 077	6 653	13 730	2 151	2 025	4 176
Nykøbing-Falster	7 196	7 688	14 884	6 312	5 818	12 130	884	1 870	2 754

Note. Municipalities are listed according to number of inhabitants and include all municipalities with more than 25,000 inhabitants.

Table 157

Incoming and outgoing commuting to and from work in municipalities with over 25,000 inhabitants 2002

	Incoming commuters as percentage of persons with place of work in the municipality			Outgoing commuters as percentage of employed persons resident in the municipality		
	Men	Women	Total	Men	Women	Total
	per cent					
Copenhagen	53.6	49.7	51.7	42.9	34.9	39.1
Århus	30.2	22.2	26.4	18.4	12.8	15.7
Odense	29.2	24.6	27.0	24.9	14.2	19.8
Aalborg	31.2	24.2	27.9	19.8	12.6	16.5
Frederiksberg	75.2	74.1	74.6	79.9	75.9	78.0
Esbjerg	29.2	19.4	24.9	17.5	12.1	15.0
Gentofte	70.5	69.9	70.2	75.1	69.4	72.2
Kolding	38.1	30.0	34.2	32.5	21.2	27.2
Randers	38.0	32.3	35.2	36.9	23.2	30.6
Gladsaxe	77.8	69.0	73.8	73.2	67.0	70.2
Helsingør	30.5	24.5	27.5	48.9	40.0	44.6
Herning	32.9	27.1	30.3	22.6	17.8	20.4
Horsens	36.0	28.8	32.7	33.0	22.4	28.2
Vejle	47.7	41.3	44.6	36.1	26.1	31.3
Silkeborg	31.3	24.4	27.9	35.9	25.6	31.0
Roskilde	60.8	53.4	56.9	58.4	42.6	50.7
Lyngby-Taarbæk	77.1	70.3	74.0	70.0	66.1	68.1
Hvidovre	76.5	65.6	71.4	74.1	64.4	69.5
Fredericia	39.6	26.4	33.9	29.6	23.2	26.7
Greve	61.7	44.6	53.8	75.3	66.8	71.2
Næstved	39.2	32.1	35.7	44.6	31.2	38.2
Balleup	82.3	71.7	77.6	69.7	58.9	64.5
Høje Taastrup	77.0	65.3	71.9	67.5	58.2	63.1
Viborg	36.3	33.1	34.7	34.1	21.0	27.8
Svendborg	27.0	24.2	25.6	35.7	22.1	29.2
Holstebro	34.4	26.8	30.8	29.4	20.3	25.1
Tårnby	74.1	65.4	70.6	60.7	63.1	61.9
Køge	52.0	41.5	47.0	55.2	45.5	50.5
Hillerød	63.8	60.4	61.9	60.6	44.6	52.7
Slagelse	50.1	41.0	45.9	43.5	33.4	38.8
Rødovre	78.4	64.9	72.7	76.7	70.4	73.7
Hjørring	33.6	30.5	32.1	32.2	22.0	27.4
Brøndby	87.5	75.6	83.1	76.4	70.3	73.5
Frederikshavn	31.0	19.6	26.1	22.9	16.2	19.9
Holbæk	41.9	41.7	41.7	49.8	36.2	43.3
Haderslev	32.2	28.3	30.3	38.8	26.5	33.1
Søllerød	75.2	70.0	72.9	74.6	73.2	74.0
Sønderborg	43.6	41.1	42.3	39.0	24.3	32.1
Ringsted	50.8	39.8	46.0	48.1	43.4	45.9
Thisted	20.9	18.9	19.9	20.0	13.8	17.2
Albertslund	85.3	70.4	79.8	74.6	66.6	70.8
Skive	44.5	32.6	39.4	29.3	22.3	26.1
Herlev	80.2	73.8	77.1	74.2	65.9	70.2
Nykøbing-Falster	44.3	43.6	43.9	36.5	25.4	31.2

Note. Municipalities are listed according to number of inhabitants and include all municipalities with more than 25,000 inhabitants.

Table 158

Employees by sex, sector and working time

	2001		2002	
	Men	Women	Men	Women
	persons			
Total¹	1 325 279	1 224 316	1 325 209	1 236 093
Full-time	1 159 827	1 006 327	1 158 584	1 019 910
Part-time	165 452	217 989	166 625	216 183
Private sector, total	1 008 144	603 571	1 007 354	607 273
Full-time	876 202	462 429	874 631	465 463
Part-time	131 942	141 142	132 723	141 810
Public sector, total	317 111	620 715	317 835	628 811
Full-time	283 601	543 871	283 935	554 438
Part-time	33 510	76 844	33 900	74 373
Public corporations, etc.	63 560	32 087	62 532	32 684
Full-time	59 673	28 641	58 575	29 279
Part-time	3 887	3 446	3 957	3 405
General government, total	253 551	588 628	255 303	596 127
Full-time	223 928	515 230	225 360	525 159
Part-time	29 623	73 398	29 943	70 968
Central government sector	100 011	80 640	100 914	81 760
Full-time	89 456	68 244	89 831	69 709
Part-time	10 555	12 396	11 083	12 051
Social security funds	780	1 589	837	1 655
Full-time	756	1 525	813	1 585
Part-time	24	64	24	70
Counties	46 908	143 759	47 163	144 934
Full-time	40 984	129 729	41 307	131 408
Part-time	5 924	14 030	5 856	13 526
Municipalities	105 852	362 640	106 389	367 778
Full-time	92 732	315 732	93 409	322 457
Part-time	13 120	46 908	12 980	45 321

¹ Including not known and persons employed abroad.

Table 159

Unemployed persons as a percentage of the labour force, by sex, age and region 2002

	Men			Women			Men and women, total		
	Under 30 years	30 years +	Total	Under 30 years	30 years +	Total	Under 30 years	30 years +	Total
All Denmark¹	4.2	4.8	4.7	4.8	6.0	5.7	4.5	5.4	5.2
Copenhagen Municipality	4.1	7.2	6.1	3.6	6.7	5.4	3.8	7.0	5.8
Frederiksberg Municipality	3.2	5.6	4.9	3.4	5.9	5.1	3.3	5.7	5.0
Copenhagen County	3.8	4.0	3.9	3.3	4.3	4.1	3.6	4.1	4.0
Frederiksborg County	3.1	3.5	3.4	2.8	4.1	3.8	3.0	3.8	3.6
Roskilde County	3.8	3.4	3.4	3.5	4.2	4.0	3.6	3.8	3.7
West Zealand County	4.4	4.5	4.5	5.9	6.0	6.0	5.1	5.2	5.2
Storstrøm County	5.1	5.6	5.5	6.4	7.0	6.9	5.7	6.3	6.2
Bornholm County	8.2	8.1	8.1	9.0	10.7	10.4	8.6	9.3	9.2
Funen County	5.0	5.6	5.5	5.8	6.8	6.5	5.3	6.2	6.0
South Jutland County	4.1	4.3	4.3	6.1	6.4	6.3	5.0	5.3	5.2
Ribe County	3.3	3.8	3.7	5.0	5.4	5.3	4.1	4.5	4.4
Vejle County	4.0	4.0	4.0	5.4	6.1	6.0	4.7	5.0	4.9
Ringkøbing County	2.5	3.1	3.0	4.3	5.8	5.4	3.3	4.4	4.1
Århus County	5.0	5.7	5.5	5.4	6.9	6.5	5.2	6.3	6.0
Viborg County	3.7	3.4	3.5	5.1	5.2	5.2	4.3	4.2	4.3
North Jutland County	5.0	6.0	5.7	6.6	8.4	7.9	5.7	7.1	6.7

¹ Including where region not known.

Table 160

Unemployed persons, and unemployed persons as a percentage of the labour force 2002

	Unemployed persons			Unemployed persons as percentage of the labour force		
	Men	Women	Total	Men	Women	Total
	number of persons			per cent		
Total	68 793	75 938	144 732	4.7	5.7	5.2
16-17 years	6	8	14	0.0	0.0	0.0
18-19 years	668	659	1 327	1.7	1.9	1.8
20-24 years	5 533	4 979	10 512	4.3	4.3	4.3
25-29 years	9 123	10 348	19 471	5.5	6.9	6.1
30-34 years	8 939	11 846	20 785	5.0	7.3	6.1
35-39 years	8 892	11 290	20 182	4.5	6.2	5.4
40-44 years	7 371	8 102	15 473	4.3	5.0	4.6
45-49 years	6 760	6 651	13 412	4.1	4.2	4.2
50-54 years	6 652	6 705	13 358	4.0	4.3	4.1
55-59 years	10 262	11 721	21 983	6.4	8.6	7.4
60-64 years	4 234	3 396	7 630	7.0	9.6	7.9
65-66 years	354	233	586	3.6	5.1	4.1

Note. The figures in the table are based on information for the relevant persons at the end of the year.

Table 161**Unemployed persons as a percentage of the labour force,
by insurance category 2002**

	Unemployed persons			Unemployed as percentage of the labour force		
	Men	Women	Total	Men	Women	Total
	number of persons			per cent		
Total	68 793	75 938	144 732	4.7	5.7	5.2
Full-time insured persons	54 148	61 091	115 239	5.5	6.2	5.9
Part-time insured persons	116	2 339	2 455	7.8	5.7	5.8
Self employed insured persons	2 924	2 633	5 557	2.6	4.9	3.4
Uninsured persons	11 605	9 876	21 481	3.0	3.9	3.4

Table 162

Unemployed persons by sex, age and region 2002

	Men			Women			Men and women, total		
	Under 30 years	30 years +	Total	Under 30 years	30 years +	Total	Under 30 years	30 years +	Total
All Denmark¹	15 330	53 464	68 793	15 994	59 944	75 938	31 324	113 409	144 732
Copenhagen Municipality	2 165	6 547	8 714	1 961	5 241	7 201	4 127	11 788	15 915
Frederiksberg Municipality	229	1 033	1 261	263	1 035	1 299	492	2 067	2 560
Copenhagen County	1 377	5 086	6 464	1 076	5 271	6 346	2 453	10 355	12 810
Frederiksborg County	593	2 920	3 513	499	3 204	3 703	1 091	6 126	7 216
Roskilde County	509	1 824	2 332	439	2 129	2 566	946	3 951	4 898
West Zealand County	785	2 843	3 627	927	3 316	4 245	1 712	6 160	7 872
Storstrøm County	718	3 013	3 732	776	3 325	4 102	1 495	6 340	7 834
Bornholm County	183	725	907	164	878	1 042	347	1 599	1 949
Funen County	1 494	5 338	6 832	1 572	5 715	7 287	3 066	11 053	14 119
South Jutland County	643	2 278	2 923	815	2 918	3 733	1 459	5 199	6 657
Ribe County	518	1 770	2 290	659	2 165	2 826	1 175	3 939	5 116
Vejle County	973	2 956	3 929	1 178	3 986	5 166	2 151	6 943	9 095
Ringkøbing County	491	1 844	2 336	718	2 912	3 629	1 208	4 757	5 965
Århus County	2 339	7 483	9 822	2 352	8 193	10 546	4 693	15 676	20 368
Viborg County	570	1 692	2 262	672	2 209	2 881	1 242	3 901	5 143
North Jutland County	1 724	6 060	7 784	1 909	7 423	9 331	3 634	13 481	17 115

¹ Including where region not known.

Table 163

Unemployed persons as a percentage of the labour force, by sex and country of origin 2002

	Unemployed persons			Unemployed as percentage of the labour force		
	Men	Women	Total	Men	Women	Total
	number of persons			per cent		
Total¹	68 793	75 938	144 732	4.7	5.7	5.2
Denmark	59 137	67 720	126 857	4.3	5.4	4.8
Rest of the world, total	9 604	8 181	17 785	10.4	11.1	10.7
EU countries	1 395	1 096	2 490	6.0	6.3	6.1
Of which:						
United Kingdom	331	149	480	6.5	6.6	6.5
Sweden	190	293	484	5.4	6.2	5.9
Germany	415	356	771	5.8	6.6	6.1
Other Europe, total	3 589	3 658	7 247	11.0	12.1	11.6
Of which						
Yugoslavia (former)	1 143	1 011	2 154	11.8	13.9	12.7
Norway	176	282	458	5.8	6.2	6.0
Poland	189	413	602	8.1	10.0	9.3
Turkey	1 786	1 477	3 263	14.3	18.0	15.8
Africa, total	1 115	621	1 735	15.1	15.2	15.2
Of which						
Somalia	379	157	537	27.3	31.9	28.5
North America, total	119	82	201	5.8	5.2	5.5
South and Central America, total	139	181	319	9.0	9.3	9.2
Asia, total	3 135	2 461	5 597	12.6	13.6	13.0
Of which						
Iraq	432	179	610	16.7	22.5	18.0
Iran	512	231	743	13.2	12.8	13.1
Lebanon	553	296	848	19.7	31.6	22.7
Pakistan	499	384	883	10.7	16.1	12.6
Sri Lanka	279	305	584	11.5	17.7	14.1
Viet Nam	293	282	575	10.5	12.8	11.5
Oceania, total	25	18	43	4.7	6.7	5.3
Stateless and not known	89	64	153	19.8	29.1	22.8

¹ Including where country of origin not known.

Table 164

Insured persons unemployed as a percentage of insured persons by sex and unemployment insurance fund 2002

	Insured person unemployed			Rates of unemployment in per cent		
	Men	Women	Total	Men	Women	Total
Total	57 190	66 065	123 255	5.2	6,2	5,7
Academics	1 348	1 587	2 935	4.6	4,9	4,8
Self-employed persons (ASE)	2 035	1 923	3 959	2.3	4,5	3,0
Plumbers	511	4	514	6.4	20,5	6,4
Child and youth educationists	252	1 462	1 714	3.3	3,2	3,2
Business economists	794	653	1 446	5.0	6,4	5,5
Tradesmen	985	780	1 765	4.0	6,2	4,8
Danish Employees	68	58	126	1.3	1,9	1,5
Nurses	7	280	287	0.4	0,6	0,5
Commercial salesmen	847	219	1 067	3.9	6,1	4,2
Electricians	657	17	674	2.8	8,7	2,8
Foreign language translations etc.	45	515	560	10.1	6,8	7,0
Free Salaried Employees	293	794	1 087	4.2	5,6	5,1
School teachers	370	723	1 093	2.1	1,9	2,0
Executive and service	980	338	1 318	5.4	6,8	5,7
Public servants	2 711	5 220	7 931	4.1	4,9	4,6
Commercial and employees (HK)	4 282	14 328	18 610	6.2	6,4	6,4
Engineers	1 800	340	2 140	3.4	4,5	3,5
IT staff, commercial diploma staff	618	214	832	6.4	5,4	6,1
Journalists	425	378	803	7.7	10,3	8,7
Christian workers	4 385	6 673	11 057	6.3	9,0	7,7
Female workers	•	6 815	6 815	•	10,3	10,3
Work supervisors	1 779	500	2 279	2.9	3,6	3,0
M.A.'s and M.Sc.'s	1 404	2 135	3 539	6.8	10,4	8,6
Painters	430	204	634	6.0	7,8	6,5
Maritime employees	127	1	128	15.1	6,1	14,8
Metal workers	4 945	177	5 122	4.9	10,1	5,0
Food industry workers	1 109	1 170	2 279	4.7	9,7	6,4
Municipal workers, etc.	715	5 583	6 297	3.6	3,9	3,9
Assisting educationists	327	2 398	2 725	10.1	10,5	10,5
Restaurant workers	893	1 499	2 392	14.7	14,1	14,3
Socio educationists	286	894	1 180	3.7	4,0	3,9
Specialized workers	17 743	5 981	23 724	8.1	13,7	9,1
Civil servants and telecom. employees	459	354	813	2.2	3,3	2,6
Technicians	896	1 185	2 081	5.3	9,0	6,9
Wood and building work	2 664	663	3 327	6.0	10,5	6,6

Note. Number of insured persons at the end of the year and excl. persons on transitional allowances and voluntary early-retirement pay.

Table 165

Employed persons, by usual weekly hours of work 2002

	Usual weekly hours of work in main job						Total ¹	Average weekly hours of work
	Under 15 hours	15-29 hours	30-36 hours	37 hours	38-48 hours	49 hours +		
	thousands							
Men and women, total	191	215	319	1 215	514	242	2 715	36.0
15-24 years	130	39	24	147	36	9	389	25.8
25-29 years	19	21	31	153	61	20	307	36.0
30-39 years	9	39	91	317	151	71	681	38.6
40-54 years	12	77	129	441	202	99	966	38.1
55-66 years	20	39	44	157	64	43	371	36.5
Men, total	84	55	62	683	348	207	1 449	38.7
15-24 years	55	16	8	89	26	8	205	28.8
25-29 years	9	7	7	79	42	17	162	38.0
30-39 years	4	8	16	168	102	61	361	41.3
40-54 years	5	11	22	245	130	83	500	41.0
55-66 years	10	13	9	102	48	37	222	39.1
Women, total	107	159	256	532	166	35	1 266	32.9
15-24 years	75	22	16	58	10	1	184	22.5
25-29 years	10	14	23	74	20	3	145	33.8
30-39 years	5	31	75	149	49	10	320	35.5
40-54 years	7	66	107	196	71	15	466	35.0
55-66 years	10	26	35	55	16	6	150	32.8
Industry								
Agriculture, etc.	5	6	4	24	20	28	90	42.8
Manufacturing	17	12	33	266	97	32	459	37.5
Electricity, gas and water supply	9	4	..	15	37.0
Construction	4	4	5	115	32	21	181	39.0
Wholesale and retail trade, hotels and restaurants, etc.	76	40	31	172	81	55	457	33.9
Transport, storage and communications	10	10	11	80	43	29	185	39.1
Financial intermediation and business activities	21	21	33	129	92	41	338	37.5
Public and personal services	57	121	200	418	145	35	983	34.1
Activity not stated	2	5	28.7
Socio-economic status								
Self-employed	6	11	15	17	64	108	222	48.0
Assisting spouses	3	3	3	6	3	2	21	31.8
Salaried employees	182	201	301	1 192	448	132	2 472	35.0
Top managers	3	25	45	34	110	44.6
At upper level	10	17	23	172	105	28	357	38.0
At intermediate levels	16	34	85	252	120	27	536	36.5
At basic levels	84	106	155	602	156	39	1 152	34.4
Clerks	17	31	42	144	31	2	268	33.4
Services and sales workers	63	65	91	124	45	6	399	30.2
Agricultural/fishery workers	15	6	3	27	39.6
Craft-related workers	..	4	9	216	44	10	285	38.0
Process and machine operators	2	6	14	103	30	17	173	39.0
Other employees	71	42	35	140	21	4	317	28.0

¹ Including working hours not stated

Table 166

Labour market policy measures 2001

	Men			Women			Total		
	Partici- pants total	Partici- pation rate	Full-time partici- pants	Partici- pants total	Partici- pation rate	Full-time partici- pants	Partici- pants total	Partici- pation rate	Full-time partici- pants
Total	201 262	0,609	122 610	285 251	0,592	168 965	486 513	0,599	291 576¹
Of which:									
Activation, state	40 546	0,370	15 018	65 037	0,422	27 451	105 583	0,402	42 470
Activation, local counsel ²	52 740	0,353	18 635	49 890	0,352	17 550	102 630	0,353	36 185
Subsidized employment	43 472	0,382	16 591	46 747	0,400	18 712	90 219	0,391	35 303
Job training	19 327	0,392	7 567	24 248	0,419	10 151	43 575	0,407	17 718
Individual job training	25 876	0,320	8 286	22 443	0,323	7 252	48 319	0,322	15 538
Pool jobs ³	82	0,326	27	151	0,319	48	233	0,322	75
Service jobs	938	0,620	581	1 842	0,627	1 155	2 780	0,625	1 736
Voluntary not paid activities	406	0,322	131	354	0,298	106	760	0,311	236
Leave	6 477	0,356	2 307	56 664	0,375	21 273	63 141	0,373	23 579
Parental leave	4 475	0,314	1 403	50 031	0,364	18 233	54 506	0,360	19 636
Educational leave ⁴	2 010	0,450	904	6 690	0,454	3 040	8 700	0,453	3 943
Education/training⁵	46 420	0,357	16 569	66 571	0,363	24 163	112 991	0,360	40 732
Adult education subsidies	451	0,158	71	948	0,270	256	1 399	0,234	327
Education with training allowance	31 868	0,294	9 358	51 782	0,357	18 469	83 650	0,333	27 827
Specially adapted educational activities	6 998	0,230	1 609	10 193	0,260	2 646	17 191	0,247	4 255
Adult and further education	111	0,359	40	186	0,423	79	297	0,399	119
Adult apprenticeship support	7 330	0,749	5 491	3 950	0,687	2 714	11 280	0,727	8 205
Integration allowance	5 573	0,335	1 867	6 066	0,318	1 931	11 639	0,326	3 798
Course in understanding of the society	1 211	0,138	167	1 306	0,138	180	2 517	0,138	348
Danish lessons	5 153	0,309	1 591	5 671	0,291	1 648	10 824	0,299	3 239
Separately planned Danish lessons	354	0,308	109	341	0,300	102	695	0,304	211
Other activation	23 381	0,204	4 770	19 615	0,220	4 320	42 996	0,211	9 090
Specially adapted activation ⁶	17 697	0,235	4 164	14 254	0,256	3 648	31 951	0,245	7 812
Advisory/introductory activation	5 327	0,097	519	4 975	0,114	567	10 302	0,105	1 086
Labour Trainee	1 223	0,063	78	1 428	0,064	92	2 651	0,064	169
Experiments	39	0,233	9	34	0,397	13	73	0,310	23
Retirement	95 485	0,843	80 507	112 630	0,875	98 566	208 115	0,860	179 073⁷
Transitional allowances ⁸	7 185	0,877	6 304	15 958	0,884	14 103	23 143	0,882	20 407
Early retirement pay	89 567	0,828	74 203	99 693	0,847	84 464	189 260	0,838	158 666
of whom from unemployment	23 271	0,819	19 053	25 183	0,834	21 002	48 454	0,827	40 055

¹ New data from National Labour Market Authority cause that figures of Job training and education with training allowance is on a higher level in 2001 than the year before. ² Only activation under the Act on active social policy. I.e. People not entitled to unemployment benefit, who are activated by a municipality. ³ Pooljobs was withdrawn on the 31. December 1999. Arrangement made before the date continues. ⁴ Educational leave was withdrawn on the first of January 2001. Arrangement made before the date continues. ⁵ People on an education course with unemployment daily-cash benefits are counted as unemployed and therefore are not included in the figures. ⁶ Some municipalities including Copenhagen, applies specially adapted activation to introduction programmes for aliens and it include integration allowance. ⁷ Data extract for Retirement is changed. It causes a fall in the numbers of Full-time participants of about 2 pct. The reason is that the new data subtract the hours a person works. ⁸ Only persons, who was 50 years old or with a higher age in 1996 and fulfil the other conditions for transitional allowances are included in the figures.

Table 167

Labour market policy measures by county 2001

	Men			Women			Total		
	Under 25 years	25 years +	Total	Under 25 years	25 years +	Total	Under 25 years	25 years +	Total
	average number of Full-time participants								
All Denmark¹	4 844	117 767	122 610	6 362	162 603	168 965	11 206	280 370	291 576
Copenhagen Municipality	470	9 746	10 216	510	10 612	11 123	980	20 358	21 338
Frederiksberg Municipality	51	1 474	1 524	48	2 244	2 292	98	3 718	3 817
Copenhagen County	468	11 484	11 952	545	17 303	17 848	1 013	28 787	29 800
Frederiksborg County	243	6 842	7 085	252	10 443	10 696	496	17 285	17 781
Roskilde County	142	4 791	4 933	189	6 863	7 053	331	11 654	11 985
West Zealand County	264	6 948	7 213	380	9 348	9 729	645	16 298	16 942
Storstrøm County	307	7 374	7 681	362	9 201	9 563	669	16 575	17 244
Bornholm County	65	1 404	1 469	67	1 635	1 702	132	3 039	3 171
Funen County	532	12 046	12 579	665	14 874	15 540	1 197	26 922	28 119
South Jutland County	239	6 318	6 557	353	8 496	8 850	593	14 815	15 407
Ribe County	188	4 733	4 921	314	6 801	7 115	503	11 534	12 036
Vejle County	280	7 295	7 575	446	10 975	11 421	726	18 270	18 996
Ringkøbing County	182	5 716	5 897	332	8 647	8 980	514	14 363	14 877
Århus County	760	14 060	14 820	914	19 800	20 714	1 674	33 860	35 534
Viborg County	186	4 645	4 832	270	6 737	7 007	456	11 382	11 838
North Jutland County	464	12 504	12 968	712	18 020	18 732	1 176	30 524	31 700

¹ Incl. unspecified regions.

Table 168

Work stoppages 2001

	Work stoppages	Number of employees involved	Number of working days lost
	number		
Total	840	54 664	59 700
Agriculture, fishing and quarrying	3	98	100
Manufacturing, total	497	40 120	40 400
Manufacture of food, beverages and tobacco	188	23 631	20 500
Mfr. of textiles, clothing, footwear	1	20	0
Mfr. of wood, paper and printing	43	1 604	1 300
Mfr. of chemicals, plastic products etc.	35	1 759	2 800
Mfr. of other non-metallic mineral products	32	962	1 000
Mfr. of basic metals and fabricated products	180	11 316	14 000
Mfr. of furniture, manufacturing n.e.c.	18	828	800
Energy and water supply	8	363	500
Construction	99	2 032	3 400
Wholesale and retail trade	38	1 602	2 300
Hotels and restaurants	10	457	200
Transport	93	4 562	6 200
Counties and municipalities	67	3 750	4 800
Other ¹	22	1 100	1 200
Activity not stated	3	580	600

Table 169

The components of total labour costs 2001

Industry	Total labour costs	Other labour costs	Total earnings	Of which					
				Nuisance bonus	Sickness etc. with pay	Holiday allowances	Fringe benefits	Pension including ATP	Direct remuneration ¹
DKK per hour									
Total	212.36	6.71	205.65	3.76	5.88	26.04	1.80	18.72	149.47
Manufacturing	201.14	4.99	196.15	5.94	5.84	24.39	1.37	16.81	141.80
Electricity, gas and water supply	244.68	7.28	237.40	7.49	4.52	29.08	1.32	28.71	166.29
Construction	194.21	3.96	190.25	3.78	4.18	23.91	1.27	15.12	142.03
Ws. and retail trade, hotels, restaurants	191.69	4.43	187.26	2.01	4.78	23.26	3.30	14.88	139.04
Transport, storage and communication	220.29	4.79	215.49	5.68	6.18	26.67	1.77	22.30	152.90
Financial intermediation, business act.	253.59	14.11	239.48	1.78	7.41	31.62	1.76	25.08	171.82
Financial intermediation and insurance etc.	286.88	28.53	258.35	2.82	8.90	35.49	1.32	35.62	174.21
Letting and sale of real estate	200.41	6.60	193.80	1.09	5.53	25.43	1.77	17.73	142.25
Business activities etc.	240.10	7.08	233.02	1.15	6.65	29.83	2.07	18.73	174.60
Public and personal services	215.05	6.72	208.33	2.28	6.66	26.74	0.65	19.66	152.36

Note. The statistics include young people and apprentices. Other labour costs are costs that cannot be characterized as employee's earnings. Examples are contributions to social schemes and funds, staff canteens, direct and indirect taxes calculated on the basis of the number of employees or total wage and salary costs. Total labour costs are calculated net of deductions for any subsidies, etc.

¹ Incl. bonus.