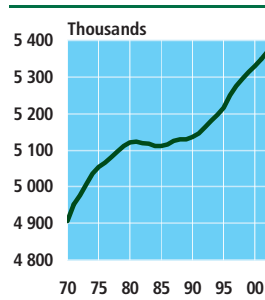


### Population and elections

#### 1. Danish population trends

Figure 1  
Population 1970-2002



#### Population size

Since the mid-1970s, Denmark has had a population of approximately five million inhabitants. The size of the population has seen a slow but steady increase since 1970 and 1. January 2002 it reached 5.4 millions. However, during the early 1980s the population fell - partly due to reductions in the number of births.

#### Women are in majority

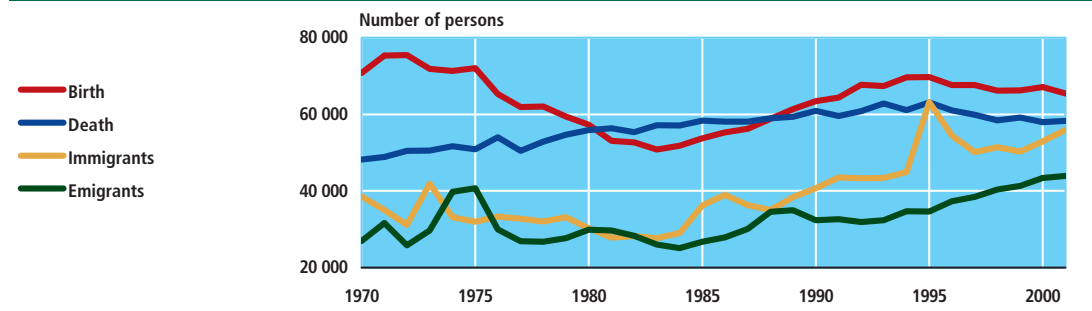
Even though more boys than girls are born every year, women comprise slightly more than half of the Danish population (50.6 per cent). This is because of higher mortality rates among men. There are more men than women in all age groups up to and including 57 years, but women take over in all subsequent age groups. The 95 and over age group comprises almost four times as many women as men.

#### More births than deaths

Population developments depend on four component elements: the number of live births, the number of deaths, immigration, and emigration (external migration). Figure 2 shows how the population increase during recent years is the result of two things: positive natural increase (births  $\div$  deaths) and positive net migration (immigration  $\div$  emigration). Positive net migration means that more people enter this country than leave it.

Figure 2

Population trends 1970-2001



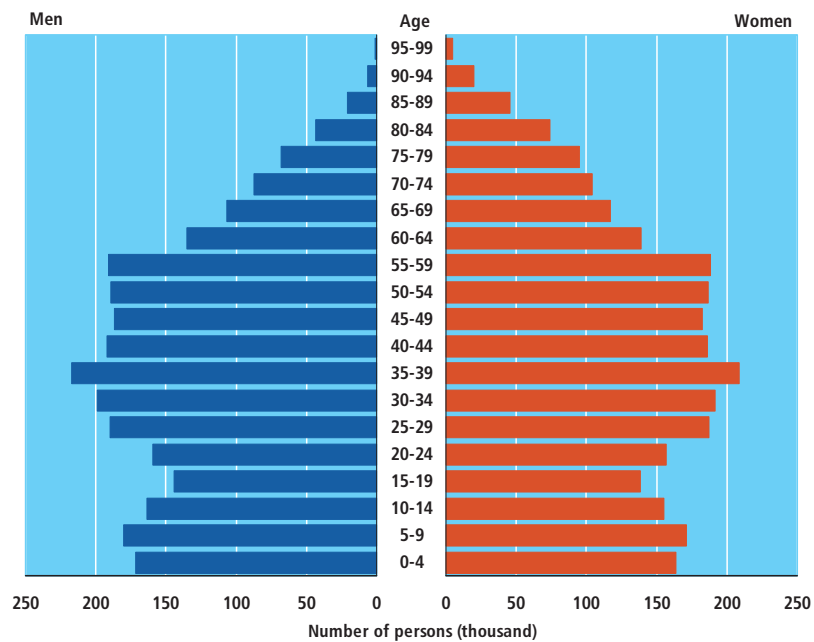
#### We are growing older

The Danish population is getting older. The average age in Denmark is 39.3 years as of 1. January 2002. For men, this figure is 38.1 years, whereas the corresponding figure for women is 40.4 years. When examining 1980 figures, the average age was more than two years lower (an overall average age of 36.7 years; 35.5 years for men, 38.0 years for women).

## Population and elections

This increase in the average age is partly caused by an increase in the number of people over the age of 80. It is, however, also occasioned by the fact that the large generations from the mid-1940s have now reached their fifties, as well as the fact that the large generations from the mid-1960s are now being classified to an older age group and are replaced by smaller generations.

Figure 2 The Danish population, 1 January 2002



## 2. The demographic dependency ratio in Denmark

### How many individuals will need support in future?

The demographic dependency ratio is calculated on the basis of the population distribution by age. Dependency ratio shows the relationship between the number of persons outside the economically active population and the number of persons available to support them.

### The demographic dependency ratio is growing

If the economically active (working) population is calculated as those within the 20 - 59 age group, the dependency ratio is 0.78. That is to say that for every 100 economically active individuals, 78 persons need support. On the basis of the most recent forecasts on population development, the demographic dependency ratio will increase to 0.90 in 2010 and reach 1.0 in 2030. In 1960, the demographic dependency ratio was 0.79. This is to say that more and more people will need support in the years to come, a development which is linked to the fact that the number of elderly people will continue to increase in future.

## Population and elections

---

### The lowest demographic dependency ratio in the EU

It is possible to compare the dependency ratio for the Member State of the EU for 2000. Here, the economically active population has also been defined as the 20-59-age group. These figures show that Denmark has the lowest demographic dependency ratio within the EU at 0.77. Netherlands has the lowest demographic dependency ratio at 0.74. The average for the EU is 0.81. Sweden has the greatest demographic dependency ratio at 0.86, followed by Ireland at 0.85. Ireland is the only country in EU where the biggest part of the population, who need support is young people between 0-19 year.

## 3. Births

### How many children are born each year?

During recent years, the number of live births has been approximately 67,000 a year. The number of births during a given period depends on the number of women of childbearing age and on the number of children born to each woman. The *total fertility rate*, i.e. the average number of live births per woman, is 1.7 in Denmark.

### High fertility rate in Denmark

With 1.7 children per woman, Denmark has one of the highest fertility rates in the EU. In 2000 the total fertility rate for the EU was 1.5. Ireland and France had the highest fertility rate (1.9) and Spain the lowest (1.2).

### Older mothers

Over the years, women have become increasingly mature before becoming mothers. In 2000, the average age of women giving birth for the first time was 29.7 years. This development has been especially pronounced since 1970, when the total average age of women giving birth was 26.7 years.

## 4. Families

### Postponed marriages

The way in which Danes form families has changed during the last 30 years. The forms of partnership have changed; but marriage is still the dominant form of partnership. 78 per cent of all couples living together are married. However, this percentage is decreasing, especially among the younger generations. In 1970, 88 per cent of all 30 year-old women were married. In 2001, the corresponding figure is only 47 per cent for all 30 year-old women. Simultaneously, the average age of women when they first get married has increased from 22.8 years to 30.3 years and from 25.1 years to 32.8 years for men.

### We still live as couples

The fact that people get older before they get married does not mean that they do not live as couples. It does, however, mean that it becomes increasingly common for couples to live together without being married. This is especially true of the younger generations.

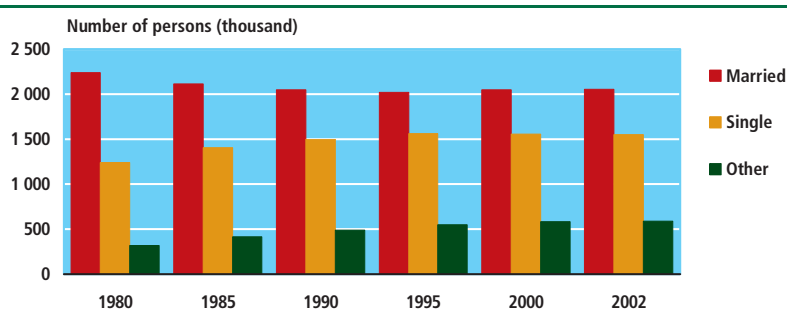
## Population and elections

### Fewer singles

After a long period with an increasing number of singles, the last couple of years have seen a slight decrease in the number of single-person households. However, more than one third of all adults live alone, and women comprise the majority of this group (53 per cent). Of those individuals with no partner, 61 per cent of the women and approximately 56 per cent of the male population live completely alone. The rest live with other persons, who - depending on the age of the person in question - are often parents or children.

Figure 4

### Development in adult family types



Note: 1 January

### Young men and older women live alone

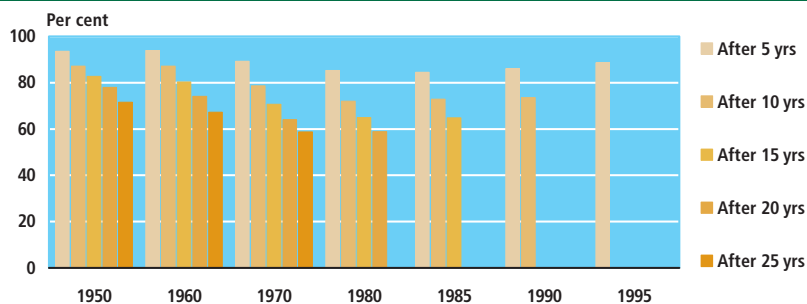
When considering the younger generations, more young men than women live alone. This is due to several factors. First of all, single women live with children to a greater degree than single men. Secondly, men tend to be a couple of years older than women when entering a relationship. In addition to this, the younger age groups number more men than women. Conversely, among the older generations it is much more common for women to live alone than for men. This is caused by the fact that women outnumber the men in this age group, quite simply because the men die sooner.

### More marriage end in divorce

18 per cent of all marriages entered into in 1950 had been dissolved by divorce after a period of 25 years. The same held true for 37 per cent of the marriages entered into in 1975. Thus, there is an increase in the number of marriages which end in divorce. At present, it would appear that the tide is turning for those marriages which were entered into in 1990 or later. As yet, these marriages have lower divorce rates than the 1985 marriages. The percentage of marriages entered into in 1985 which remain after 5 years, was approximately 85 per cent, while the corresponding percentage was 89 per cent for marriages entered into in 1995.

## Population and elections

Figure 5 The percentage of marriages entered into in 1950-1995, which remain after 5-25 years



### 5. Mortality

#### Most of us live past 60

In recent years, the number of deaths in Denmark has been approximately 60,000 deaths a year. Most people die after having passed the age of 60. In 2001, more than 85 per cent of all deaths occurred in the over-60 age group.

#### Excess mortality for men compared to women

More men than women die within practically all age groups. This is to say that there is an excess mortality for men in relation to women. The infant mortality rate is one-third greater for boys than for girls. An even greater difference is evident in the 15-35 age group, where the mortality rate for men is up to two or three times greater than that for women.

#### Life expectancy reflects the health of a population

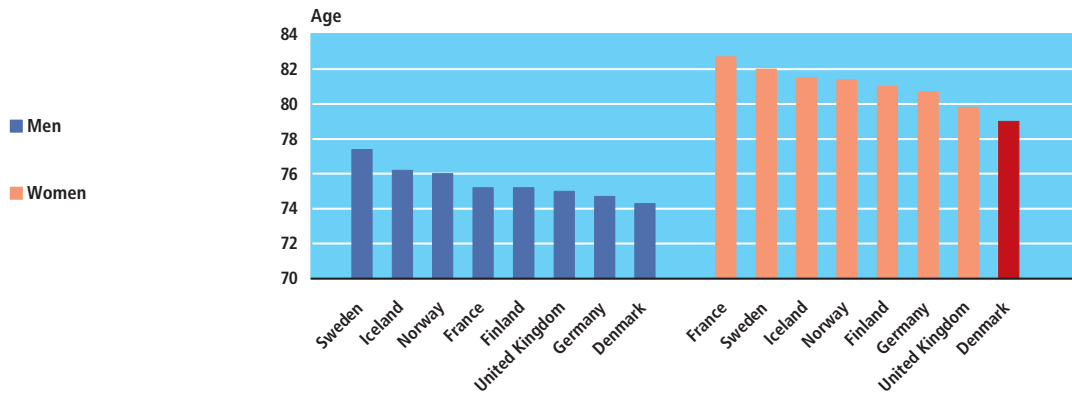
Life expectancy is one of the most commonly used statistics for assessing the health of a population. Life expectancy is the average number of years that a person can expect to live, based on the latest figures for mortality. The latest life-expectancy rates have been calculated at 74.5 for men and 79.2 for women.

#### Higher life expectancy rates

The trend as regards life expectancy has not been as positive in Denmark as it has in many other countries. The trend towards stagnation in life expectancy was especially pronounced among Danish women. In the 1960s, Denmark had some of the highest life expectancy rates in the world, but later on Danish life expectancy rates were among the lowest in Western Europe. However, life expectancy rates have again increased during recent years. A comparison of mortality figures for 1995/96 and 2000/2001, shows a higher life expectancy rate of 1.6 year for men and 1.2 year for women.

## Population and elections

Figure 6 Life expectancy rates in selected countries, 2000



Source: EUROSTAT: *European Social Statistics, Demography. 2001.*  
 Note: United Kingdom and Germany concerns the year 1999

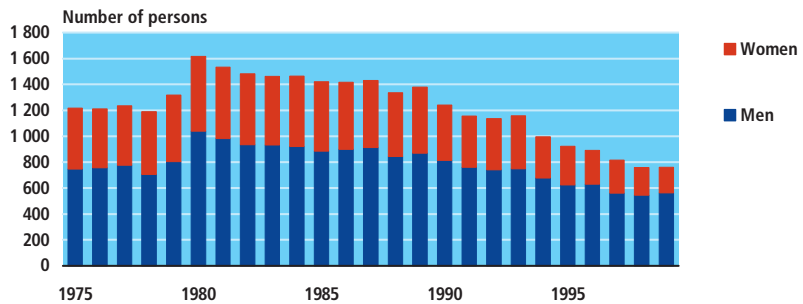
### One quarter of all deaths are caused by cancer

Cancer, heart diseases and cardio-vascular disorders are the three main causes of death. Almost two thirds of all deaths are caused by one of these conditions. The number of deaths from heart disease has fallen in recent years, whereas the number of deaths by cancer shows the opposite tendency.

### Fewer suicides

The number of suicides has been decreasing for some years, and the latest figures show 762 suicides in 1999, corresponding to approximately 1.3 per cent of all deaths. Suicide is more than twice as common among men as among women.

Figure 7 Number of suicides, 1970-1999



## Population and elections

### 6. Internal and external migration

#### One in six people move each year

In 2001, more than 848,000 internal migrations are registered. This corresponds to one in six people moving each year. However, more than 100,000 people move twice or more within the span of a year. Almost two thirds of registered migrations are migrations within a single municipality.

#### Immigration and emigration (external migration)

Denmark has more immigrants than emigrants. The level of immigration is, however, relatively low when compared to immigration statistics for countries such as Sweden and Germany. Immigration is often thought of as immigration of foreign citizens, but Danes can also be immigrating. Approximately half of all immigrants are Danish citizens returning after a shorter or longer period abroad.

#### The Danes emigrate - and then come back

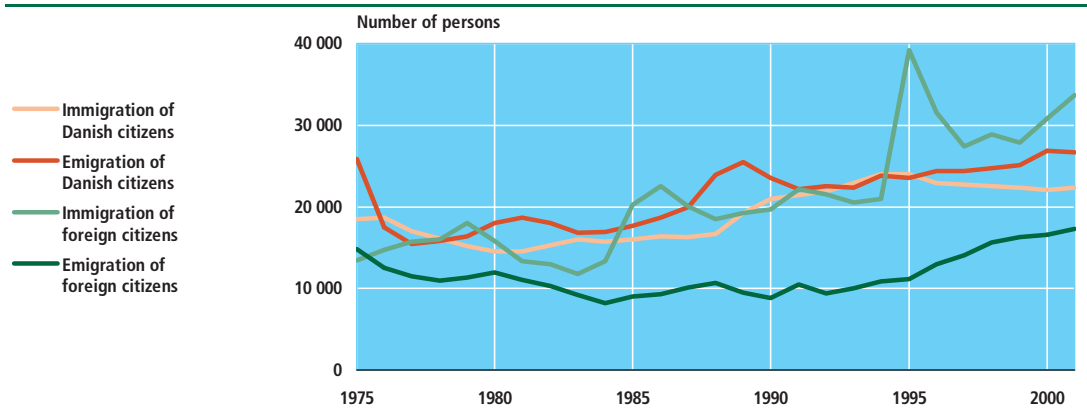
When studying the Danish emigration statistics, it appears that the majority of emigrants - approximately two-thirds - are Danish citizens. These are usually individuals who go abroad for a period of time to study or work. Thus, most of these people will subsequently appear in the statistics as immigrants.

#### More immigrants from remote countries

Previously, foreign citizens who migrated to Denmark came mainly from the other Nordic countries, the EU countries or the USA, and to some extent from Turkey and the former Yugoslavia. During the 1980s and 1990s, a large proportion of all immigrants continued to come from these countries; a new trend did, however, emerge: an increase in immigration from Asian countries such as Iran, Iraq and Afghanistan as well as African countries such as Somalia and Ethiopia. These groups consist mainly of refugees (and their families) who have been granted Danish residence permits.

Figure 8

Immigration and emigration 1970-2001

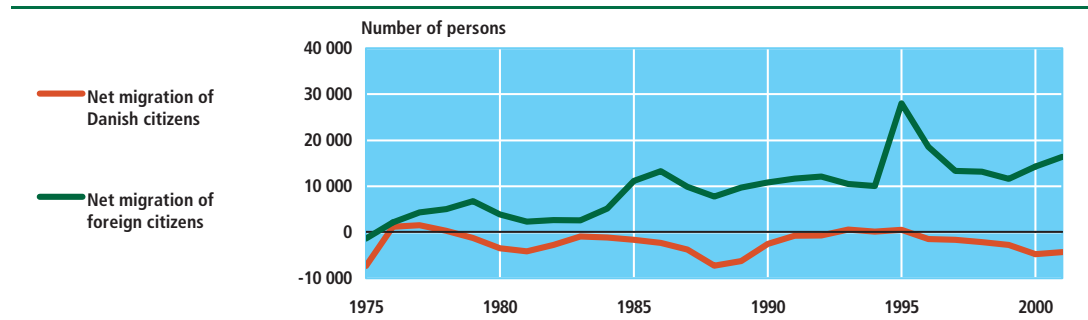


## Population and elections

### Immigrants and descendants

Immigrants and descendants comprise 7.7 per cent of the total Danish population – 6.0 per cent are immigrants and 1.7 per cent are descendants. More than half of all immigrants and descendants originated in a European country. The majority originated in Turkey, Germany, or Iraq. However, a substantial number come from Norway, Sweden, Lebanon, Bosnia-Herzegovina, Pakistan, Iran, and Somalia.

Figure 9 Net migration 1975-2001



## 7. Elections

### Election types

Statistics are published on a number of different election types; general elections (to the Folketing), elections to county councils, elections to municipality councils, elections to the European Parliament, and elections to local church councils. Statistics on referendums are also available.

### Elections to the Folketing (general elections)

Elections to the Folketing (the Danish parliament) are held once every four years; elections may, however, be called more frequently. General elections take place at the same time in Denmark, on the Faroe Islands and in Greenland. A total of 175 members of parliament are elected in Denmark, two members are elected on the Faroe Islands, and two members are elected in Greenland. 13 general elections have been held since 1970. Five general elections were held during the 1970s, one every other year. Four elections were held during the 1980s, and the 1990s saw three elections - in 1990, 1994, and 1998. The latest election was held in 2001.

### Parties nominated and elected

At the latest election to the Folketing, ten parties were nominated, of which eight entered the Folketing. In 1987, 16 parties were nominated, of which only 9 entered the Folketing.

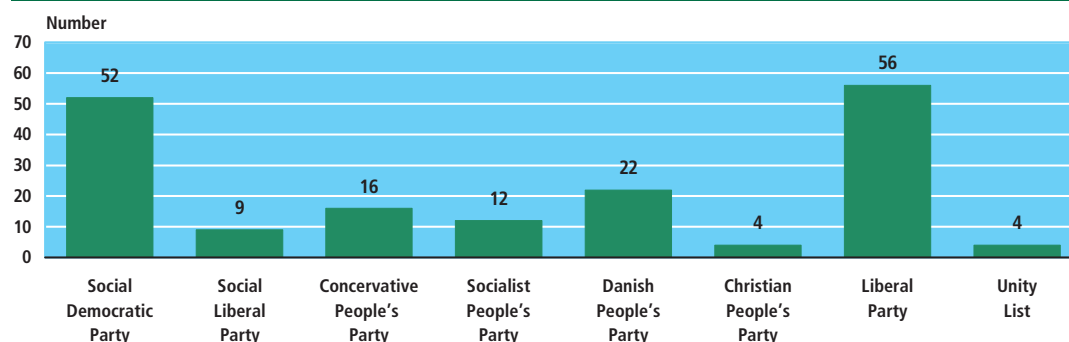
### Candidates nominated and elected

In 2001, 67 of the 175 members of parliament were women. This means that approximately 38 per cent of all members of parliament are women, which is the highest rate so far. In the 1970s, the proportion of women in the Folketing was less than 20 per cent. Compared to other countries the proportion of women elected is one of the highest.



## Population and elections

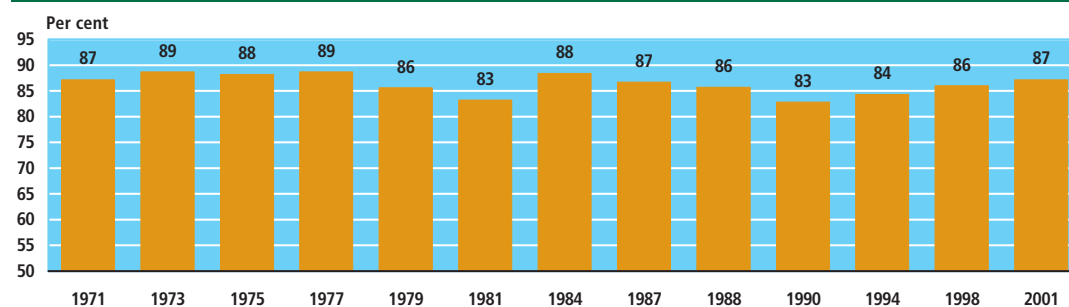
Figure 10 Distribution of seats after the 2001 election to the Folketing



### Electoral turnout

At the first four elections in the 1970s, more than 87 per cent of the electorate exercised their right to vote. Subsequent elections have attracted fluctuating electoral turnouts, with the minimum rate being 82.8 per cent in 1990. The latest general election attracted 87.2 per cent of all voters.

Figure 11 Electoral turnout for elections to the Folketing



### Elections to county councils

Elections to county councils are held once every four years. The last election was in 2001. The electoral turnout for elections to county councils is usually significantly lower than the electoral turnout for general elections. At the latest election to county councils, the average electoral turnout for all of Denmark was 86.0 per cent. The highest electoral turnout was in the county of Roskilde (88.6 per cent), while the lowest was in the county of Nordjylland (84.5 per cent).

Ten parties were nominated for all county councils, of which only three entered the county council in all counties.

The proportion of women elected in the most recent election to county councils was 27.3 per cent.

### Elections to municipality councils

Elections to municipality councils are held once every four years simultaneously with the elections to county councils. The latest election was held in 2001. As was true for elections to county councils, elections to municipality councils attract

## Population and elections

---

fewer voters than general elections. At the latest election to municipality councils, the voter turnout was 85.0 per cent.

A total of 16,914 candidates were nominated for the most recent election to municipality councils. Of these, 4,647 were elected. Women candidates comprised 27 per cent of those elected.

### **Elections to local church councils**

Elections to local church councils are held once every four years. The most recent election was in 2000. However, not all districts hold an election. At the latest election in 1996, only 331 of the 2,219 local church districts held an election.

### **Elections to the European Parliament**

Elections to the European Parliament are held once every five years. The latest election was held in 1999. Denmark elects 16 MEPs.

Elections to the European Parliament attract fewer voters than national elections. At the latest election, the electoral turnout was 50.5 per cent.

Eleven parties were nominated at the 1999 election, 8 of which entered the European Parliament. Women accounted for 37 per cent of the candidates elected.

### **Referendums**

Since 1920, 14 referendums and two consultative referendum have been held.

Three of these referendums have involved constitutional amendments (in 1920, 1939, and 1953), and five have concerned the voting age (in 1953, 1961, 1969, 1971, and 1978). Four referendums and one consultative referendum have addressed Denmark's relationship with the EEC/EU (in 1972, 1992, 1993, 1998 and 2000). One referendum, in 1963, concerned acquisition of farms and conservation of nature.

Electoral turnout for referendums has varied a great deal. The 1972 referendum on Danish accession to the EEC attracted the largest number of voters (90.1 per cent of the total voting population).

Table 39

## Population in Denmark (census results)

	Central Copenhagen Region <sup>1</sup>	Rest of the Islands	Jutland	Total	Annual increase in per cent	Population per km <sup>2</sup>
1769	80 000	366 921	350 663	797 584		20,5
1787	90 032	400 285	351 489	841 806	0.30	21,6
1801	100 975	442 902	385 124	929 001	0.74	23,8
1840	120 819	623 116	545 140	1 289 075	0.86	33,1
1850	129 695	684 077	600 876	1 414 648	0.97	36,3
1860	171 471	744 849	700 206	1 608 362	1.37	41,3
1870	215 047	798 453	788 119	1 784 741	1.10	45,8
1880	287 870	839 168	868 511	1 969 039	1.03	50,5
1890	406 767	870 447	942 120	2 172 380	1.03	55,8
1901	530 697	931 282	1 063 792	2 449 540	1.16	62,9
1911	656 635	999 221	1 198 457	2 757 076	1.26	70,8
1921 <sup>2</sup>	700 610	1 068 742	1 334 857	3 104 209	1.26	79,7
1921	700 610	1 068 742	1 498 479	3 267 831	•	76,1
1930	771 168	1 156 126	1 623 362	3 550 656	0.96	82,7
1940	890 130	1 230 882	1 723 300	3 844 312	0.83	89,6
1950	974 901	1 404 281	1 902 093	4 281 275	1.14	99,7
1960	923 974	1 643 114	2 018 168	4 585 256	0.71	106,6
1970	812 457	1 924 593	2 183 916	4 920 966	0.77	114,6
1980	654 437	2 129 762	2 337 866	5 122 065	0.21	118,9
1985	633 412	2 126 674	2 351 022	5 111 108	-0.02	118,6
1990	617 637	2 139 424	2 378 348	5 135 409	0.11	119,2
1995	625 810	2 171 062	2 418 846	5 215 718	0.37	121,0
2000	653 983	2 212 855	2 463 182	5 330 020	0,31	123,7
2001	658 318	2 221 105	2 469 789	5 349 212	0,36	124,1
2002	660 066	2 230 428	2 477 860	5 368 354	0,36	124,6

Note: The 1921 census and later censuses comprise the area of Denmark in accordance with the borders drawn up in the Treaty of Versailles of 28 June 1919. Censuses prior to this comprise the area of Denmark in accordance with the borders drawn up in the Peace Treaty of 30 October 1864.

<sup>1</sup> Frederiksberg and Gentofte Municipalities were first included in the Central Copenhagen Region in 1860 and 1921, respectively; prior to this they were listed as rural districts. <sup>2</sup> Excl. South Jutland.

**Table 40****Urban and rural population**

	1960	1970	1981	1990	2002
	Inhabitants				
<b>Denmark total</b>	<b>4 585 256</b>	<b>4 937 579</b>	<b>5 123 989</b>	<b>5 135 409</b>	<b>5 368 354</b>
<b>The Greater Copenhagen</b>	<b>1 289 406</b>	<b>1 380 204</b>	<b>1 381 882</b>	<b>1 337 114</b>	<b>1 084 556</b>
Urban areas with:					
over 100 000 inhabitants	307 067	459 669	432 778	452 773	485 212
10 000-99 999 inhabitants	913 860	998 485	1 024 886	1 067 874	1 375 073
1 000-9 999 inhabitants	513 030	688 789	1 021 714	1 085 531	1 201 366
500-999 inhabitants	160 066	202 905	237 774	227 478	244 801
200-499 inhabitants	209 915	216 105	198 058	185 669	181 039
Rural districts	1 191 912	991 422	826 897	778 970	796 307

<sup>1</sup> In 1999 12 municipalities comprising 40 towns were no longer included in the Greater Copenhagen Region.

**Table 41** Population, births, deaths, external migration

	Estimated population on 1 July	Live births	Deaths	Immigration	Emigration	Live births	Deaths	Deaths of infants under 1 year of age as a percentage of live births
	thousands					— per thousands inhabitants —		per cent
1851/60 average <sup>1</sup>	1 523	49 400	31 300	...	...	32.4	20.6	13.0
1861/70 average	1 714	52 700	34 100	...	...	30.7	19.9	13.1
1871/80 average	1 888	59 300	36 700	...	...	31.4	19.4	13.3
1881/90 average	2 087	66 600	38 700	...	...	31.9	18.5	13.4
1891/00 average	2 301	69 400	40 100	...	...	30.2	17.5	13.4
1901/10 average	2 594	74 200	36 900	...	...	28.6	14.2	11.1
1911/20 average	2 921	72 600	37 900	...	...	24.9	13.0	9.2
1921/30 average	3 426	71 200	38 300	...	...	20.8	11.2	8.2
1931/40 average	3 705	66 200	39 600	12 000	9 800	17.9	10.7	6.6
1941/50 average	4 070	85 311	39 378	14 041	15 755	21.0	9.7	4.3
1951/60 average	4 445	76 165	40 388	21 358	25 594	17.1	9.1	2.5
1961/70 average	4 774	79 220	46 976	30 146	27 420	16.6	9.8	1.8
1971	4 963	75 359	48 858	35 026	31 626	15.2	9.8	1.4
1972	4 992	75 505	50 445	31 200	25 762	15.1	10.1	1.2
1973	5 022	71 895	50 526	41 948	29 703	14.3	10.1	1.1
1974	5 045	71 327	51 637	33 146	39 751	14.1	10.2	1.1
1975	5 060	72 071	50 895	31 946	40 659	14.2	10.1	1.0
1976	5 073	65 267	54 001	33 320	30 000	12.9	10.6	1.0
1977	5 088	61 878	50 485	32 740	26 906	12.2	9.9	0.9
1978	5 104	62 036	52 864	32 059	26 735	12.2	10.4	0.9
1979	5 117	59 464	54 654	33 183	27 731	11.6	10.7	0.9
1980	5 123	57 293	55 939	30 311	29 913	11.2	10.9	0.8
1971/80 average	5 059	67 210	52 030	33 488	30 879	13.3	10.3	1.0
1981	5 122	53 089	56 359	27 874	29 719	10.4	11.0	0.8
1982	5 118	52 658	55 368	28 223	28 328	10.3	10.8	0.8
1983	5 114	50 822	57 156	27 718	25 999	9.9	11.2	0.8
1984	5 112	51 800	57 109	29 035	25 053	10.1	11.2	0.8
1985	5 114	53 749	58 378	36 214	26 715	10.5	11.4	0.8
1986	5 121	55 312	58 100	38 932	27 928	10.8	11.3	0.8
1987	5 128	56 221	58 136	36 296	30 123	11.0	11.3	0.8
1988	5 130 <sup>2</sup>	58 844	58 984	35 051	34 544	11.5	11.5	0.8
1989	5 132 <sup>2</sup>	61 351	59 397	38 391	34 949	12.0	11.6	0.8
1990	5 140 <sup>2</sup>	63 433	60 926	40 715	32 383	12.3	11.9	0.7
1981/90 average	5 123	55 728	57 991	33 845	29 574	10.9	11.3	0.8
1991	5 154 <sup>2</sup>	64 358	59 581	43 567	32 629	12.5	11.6	0.7
1992	5 170 <sup>2</sup>	67 726	60 821	43 377	31 915	13.1	11.8	0.7
1993	5 189 <sup>2</sup>	67 369	62 809	43 400	32 344	13.0	12.1	0.5
1994	5 205 <sup>2</sup>	69 666	61 099	44 961	34 710	13.4	11.7	0.5
1995	5 228 <sup>2</sup>	69 771	63 127	63 187	34 630	13.3	12.1	0.5
1996	5 262 <sup>2</sup>	67 638	61 043	54 445	37 312	12.9	11.6	0.6
1997	5 284 <sup>2</sup>	67 636	59 898	50 105	38 393	12.8	11.3	0.5
1998	5 301 <sup>2</sup>	66 170	58 442	51 372	40 340	12.5	11.0	0.5
1999	5 319 <sup>2</sup>	66 232	59 156	50 236	41 340	12.5	11.1	0.4
2000	5 337 <sup>2</sup>	67 081	57 986	52 915	43 417	12.6	10.9	0.5
1991/2000 average	5 245 <sup>2</sup>	67 365	60 396	49 757	36 703	12.8	11.5	0.5
2001	5 355 <sup>2</sup>	65 450	58 338	55 984	43 980	12.2	10.9	0.5

<sup>1</sup> For each year, see *Statistical Yearbook 1922*. <sup>2</sup> Population 1 July.

Table 42

## Population by sex and age 2002

Per 1 january	Males	Females	Total		Males	Females	Total
<b>Total</b>	<b>2 654 146</b>	<b>2 714 208</b>	<b>5 368 354</b>				
0 years	33 479	31 991	65 470	50 years	36 174	35 217	71 391
1 years	34 580	32 982	67 562	51 years	36 881	36 666	73 547
2 years	34 169	32 743	66 912	52 years	36 678	36 404	73 082
3 years	34 438	32 600	67 038	53 years	38 678	38 091	76 769
4 years	35 156	33 369	68 525	54 years	41 019	40 449	81 468
5 years	35 375	33 501	68 876	55 years	42 681	41 458	84 139
6 years	36 720	34 741	71 461	56 years	41 051	40 085	81 136
7 years	36 684	35 001	71 685	57 years	38 769	38 224	76 993
8 years	35 547	33 766	69 313	58 years	35 290	35 404	70 694
9 years	35 939	33 979	69 918	59 years	33 183	32 993	66 176
10 years	34 265	32 574	66 839	60 years	29 249	29 543	58 792
11 years	34 038	32 257	66 295	61 years	28 143	28 691	56 834
12 years	32 936	31 326	64 262	62 years	26 767	27 157	53 924
13 years	31 854	30 037	61 891	63 years	26 159	27 030	53 189
14 years	30 484	28 672	59 156	64 years	24 661	26 317	50 978
15 years	30 124	28 571	58 695	65 years	23 674	25 165	48 839
16 years	29 272	28 096	57 368	66 years	22 336	24 016	46 352
17 years	28 429	27 231	55 660	67 years	21 339	23 543	44 882
18 years	27 731	26 819	54 550	68 years	20 078	22 147	42 225
19 years	28 803	27 476	56 279	69 years	19 275	22 250	41 525
20 years	28 740	28 011	56 751	70 years	18 675	21 549	40 224
21 years	31 030	30 563	61 593	71 years	18 227	21 466	39 693
22 years	32 272	31 709	63 981	72 years	17 229	20 584	37 813
23 years	33 742	33 156	66 898	73 years	17 207	20 712	37 919
24 years	33 674	33 069	66 743	74 years	15 842	19 937	35 779
25 years	35 499	34 525	70 024	75 years	15 402	19 875	35 277
26 years	38 340	38 119	76 459	76 years	14 541	19 645	34 186
27 years	38 081	37 525	75 606	77 years	13 963	19 307	33 270
28 years	38 280	37 505	75 785	78 years	12 632	18 617	31 249
29 years	39 937	39 426	79 363	79 years	11 457	17 312	28 769
30 years	39 983	38 489	78 472	80 years	11 035	17 730	28 765
31 years	38 117	37 216	75 333	81 years	10 351	17 283	27 634
32 years	38 367	36 761	75 128	82 years	8 193	13 813	22 006
33 years	40 017	38 065	78 082	83 years	7 569	13 333	20 902
34 years	42 755	41 129	83 884	84 years	6 245	12 041	18 286
35 years	46 063	44 054	90 117	85 years	5 595	11 111	16 706
36 years	44 514	42 774	87 288	86 years	4 704	9 878	14 582
37 years	43 812	41 672	85 484	87 years	4 145	9 329	13 474
38 years	42 629	41 080	83 709	88 years	3 482	8 201	11 683
39 years	40 506	38 851	79 357	89 years	2 863	7 090	9 953
40 years	39 223	38 013	77 236	90 years	2 256	5 790	8 046
41 years	39 411	38 018	77 429	91 years	1 687	4 905	6 592
42 years	37 772	36 654	74 426	92 years	1 235	3 890	5 125
43 years	37 906	36 773	74 679	93 years	877	3 138	4 015
44 years	37 776	36 571	74 347	94 years	618	2 127	2 745
45 years	38 066	36 986	75 052	95 years	413	1 617	2 030
46 years	37 664	36 489	74 153	96 years	275	1 154	1 429
47 years	36 733	36 183	72 916	97 years	182	824	1 006
48 years	37 429	36 601	74 030	98 years	107	530	637
49 years	36 552	36 026	72 578	99 years	65	349	414
				100 years +	76	476	552

**Table 43** (continued) Population in urban areas with over 1 000 inhabitants

Per 1 january	Population 1992	Population 2002		Population 1992	Population 2002
<b>All Denmark</b>	<b>5 162 126</b>	<b>5 368 354</b>	803 Brovst	2 574	2 747
<b>The Greater Copenhagen Reg.</b>	<b>1 339 395</b>	<b>1 084 556</b>	485 Brylle	1 191	1 140
<b>Other urban areas</b>			749 Bryrup	1 163	1 367
567 Agerbæk	1 197	1 280	601 Brædstrup	3 076	3 186
525 Agerskov	1 258	1 229	805 Brønderslev	11 314	11 438
401 Allinge-Sandvig	1 962	1 910	559 Brørup	4 113	4 301
735 Allingåbro	1 923	1 943	461 Bullerup	3 136	3 007
621 Almind	1 068	1 165	539 Bylderup-Bov	1 513	1 440
573 Alslev	1 084	1 092	603 Børkop	2 586	3 333
215 Annisse Nord	1 519	1 477	509 Christiansfeld	2 577	2 686
771 Ans	1 498	1 522	385 Dalby	1 643	1 821
577 Ansager	1 407	1 442	851 Dall Villaby	1 179	1 137
801 Arden	2 228	2 357	303 Dianalund	3 338	3 559
575 Askov	1 155	1 369	155 Dragør <sup>1</sup>	•	11 054
305 Asnæs	2 569	2 673	807 Dronninglund	2 905	2 991
719 Assens	1 620	1 566	777 Durup	1 073	1 042
421 Assens	5 605	5 747	537 Dybbøl	1 962	2 270
747 Assentoft	2 306	2 415	421 Ebberup	1 292	1 262
807 Asaa	1 362	1 321	701 Ebeltoft	4 121	5 627
501 Augustenborg	3 125	3 126	615 Egebjerg	1 519	1 526
651 Aulum	2 836	2 891	571 Egebæk	1 216	1 156
747 Auning	2 417	2 495	507 Egernsund	1 608	1 598
781 Balling	1 220	1 193	605 Egtved	1 895	2 043
751 Beder	3 836	4 172	251 Ejby	1 781	1 842
785 Bedsted St.by	1 039	•	429 Ejby	1 730	1 939
461 Bellinge	4 291	4 086	267 Ejby	2 265	2 475
849 Biersted	1 848	1 707	625 Ejstrupholm	1 605	1 575
551 Billund	5 356	5 876	813 Elling	1 312	1 239
819 Bindslev	1 146	1 144	663 Engesvang	1 818	1 870
Birkerød <sup>1</sup>	•	19 099	607 Erritsø <sup>3</sup>	7 228	•
201 Of which in Allerød Municipality	•	27	561 Esbjerg	72 205	72 665
205 Of which in Birkerød Municipality	•	19 064	375 Eskilstrup	1 097	1 081
207 Of which in Farum Municipality	•	8	Espergærde <sup>1, 4</sup>	•	11 307
761 Bjerringbro	6 767	7 357	208 Of which in Fredensborg- Humleb. <sup>1</sup>	•	57
267 Bjæverskov	2 063	2 288	217 Of which in Helsingør Municipality <sup>4</sup>	•	11 250
213 Blistrup	•	1 023	351 Fakse	3 681	3 855
201 Blovstrød	•	1 997	351 Fakse Ladeplads	2 583	2 791
423 Bogense	3 105	3 354	809 Farsø	3 050	3 268
539 Bolderslev	1 270	1 247	207 Farum <sup>1</sup>	•	12 104
663 Bording	2 112	2 127	519 Felsted	1 036	1 127
267 Borup	2 581	2 940	357 Fensmark	3 715	4 018
621 Bramdrupdam <sup>2</sup>	4 756	•	811 Fjerritslev	3 316	3 353
557 Bramming	6 397	6 696	169 Fløng <sup>1</sup>	•	11 178
653 Brande	6 039	6 221	325 Forlev	2 092	2 080
505 Bredebro	1 616	1 566	751 Framlev	2 604	2 835
605 Bredsten	1 229	1 511	208 Fredensborg St.by <sup>1</sup>	•	8 115
603 Brejning	2 123	2 172	607 Fredericia	28 529	36 843
671 Bremdal	1 317	1 620	769 Frederiks	1 637	1 708
429 Brenderup	1 102	1 128	335 Frederiksberg	2 911	3 081
507 Broager	2 986	3 215	813 Frederikshavn	24 930	24 439
425 Brobyværk	1 038	1 008			

<sup>1</sup> The Greater Copenhagen Region: In 1999 12 municipalities covering 40 towns were no longer included in the Greater Copenhagen Region. <sup>2</sup> Is included in Kolding. <sup>3</sup> Is included in Fredericia. <sup>4</sup> In 1992 included in Helsingør.

**Table 43** (continued) **Population in urban areas with over 1 000 inhabitants**

Per 1 january	Population 1992	Population 2002		Population 1992	Population 2002
209 Frederikssund	14 040	14 337	313 Haslev	9 950	10 340
211 Frederiksværk	11 375	11 801	615 Hatting	1 497	1 423
851 Frejlev	1 964	2 076	269 Havdrup <sup>1</sup>	•	3 755
307 Fuglebjergr	1 799	1 903	613 Hedensted	4 402	9 508
431 Faaborg	7 235	7 262	217 Hellebæk	4 809	5 316
305 Fårevejle St.by	1 748	1 797	215 Helsingø	6 246	6 593
729 Fårup	1 057	1 022	217 Helsingør	43 302	34 868
705 Fårvang	1 139	1 172	393 Herlufmagle	1 072	1 094
			657 Herning	28 919	29 691
219 Gadevang	•	1 046	219 Hillerød	25 488	28 167
263 Gadstrup	1 780	1 781	713 Hinnerup	5 405	6 480
703 Galten	4 038	4 624	819 Hirtshals	6 966	6 760
737 Gammel Rye	•	1 059	807 Hjallerup	3 175	3 235
817 Gandrup	1 518	1 520	671 Hjerm	1 098	1 117
235 Ganløse	2 686	2 835	529 Hjorkær	1 655	1 722
395 Gedser By	1 009	•	751 Hjortshøj	2 119	2 316
609 Gedved	1 314	1 424	821 Hjørring	24 224	24 934
393 Gelsted	1 201	1 220	823 Hobro	10 138	10 864
429 Gelsted	1 539	1 545	315 Holbæk	21 851	23 784
261 Gevinge	1 474	1 402	355 Holeby	1 965	1 888
213 Gilleleje	4 838	5 468	357 Holme Olstrup	1 049	1 073
477 Gislev	1 567	1 550	661 Holstebro	29 819	31 727
339 Gisløge	1 123	1 142	569 Holsted	2 986	3 138
851 Gistrup	3 559	3 695	217 Hornbæk	3 188	3 294
611 Give	3 859	4 211	733 Hornslet	4 198	4 726
657 Gjellerup Kirkeby	3 386	3 639	619 Hornsyld	1 303	1 409
705 Gjern	1 099	1 173	615 Horsens	47 085	49 057
433 Glamsbjerg	3 020	3 141	727 Hov	•	1 192
393 Glumsø	1 597	1 612	609 Hovedgård	1 570	1 656
777 Glyngøre	1 562	1 691	208 Humlebæk <sup>1</sup>	•	8 593
851 Godthåb	1 454	1 568	221 Hundested	8 181	8 460
511 Gram	2 564	2 585	785 Hurup	2 788	2 732
605 Gravens	1 121	1 141	257 Hvalsø	3 169	3 539
571 Gredstedbro	1 086	1 025	675 Hvidbjerg	1 241	1 300
707 Grenaa	14 023	14 297	659 Hvide Sande	3 303	3 341
253 Greve Strand <sup>1</sup>	•	41 616	343 Højby	1 411	1 465
565 Grindsted	9 161	9 367	461 Højby	4 195	4 339
209 Græse Bakkeby	1 187	1 829	517 Højer	1 460	1 536
213 Græsted	2 939	3 217	779 Højslev St.by	1 830	1 915
513 Gråsten	3 693	3 797	319 Høng	3 828	3 945
523 Guderup	2 191	2 309	715 Høring	5 099	5 929
657 Gullestrup	1 706	1 936	Hørsholm <sup>1</sup>	•	35 626
255 Gundsømagle	2 267	2 196	181 Of which in Søllerød Municipality	•	2 185
557 Gørding	1 622	1 781	205 Of which in Birkerød Municipality	•	160
309 Gørlev	2 188	2 216	223 Of which in Hørsholm Municipality	•	23 412
			227 Of which in Karlebo Municipality	•	9 869
515 Haderslev	20 329	21 049	535 Høruphav	2 258	2 409
709 Hadsten	6 094	6 806	305 Hørve	2 195	2 348
815 Hadsund	4 668	4 941	437 Haarby	2 324	2 379
817 Hals	2 156	2 336	271 Hårlev	2 232	2 474
711 Hammel	5 292	5 962			
657 Hammerum	3 032	3 005	395 Idestrup	1 059	•
765 Hanstholm	2 476	2 426	663 Ikast	13 493	14 433
673 Harboøre	1 908	1 801	183 Ishøj Strand <sup>1</sup>	•	19 429
403 Hasle	1 906	1 871			

<sup>1</sup> The Greater Copenhagen Region: In 1999 12 municipalities covering 40 towns were no longer included in the Greater Copenhagen Region.



**Table 43 (continued) Population in urban areas with over 1 000 inhabitants**

Per 1 january	Population 1992	Population 2002		Population 1992	Population 2002
783 Jebjerg	1 319	1 277	829 Løkken	1 428	1 566
617 Jelling	2 289	2 876	613 Løsning <sup>2</sup>	3 584	•
527 Jels	1 589	1 702	737 Låsby	1 442	1 535
619 Juelsminde	2 872	3 546	751 Malling	2 926	3 257
341 Jyderup	3 633	3 814	719 Mariager	2 238	2 428
255 Jyllinge	5 536	9 236	363 Maribo	5 566	5 431
225 Jægerspris	3 494	3 753	443 Marstal	2 464	2 368
323 Kalundborg	15 304	15 577	661 Mejrup	1 168	1 352
351 Karise	1 765	1 824	445 Middelfart	12 429	13 266
373 Karrebæksminde	1 374	1 423	353 Mogenstrup	1 338	1 335
769 Karup	2 112	2 170	483 Mørud	1 069	1 170
439 Kerteminde	5 388	5 664	837 Mou	1 104	1 100
685 Kibæk	2 353	2 532	447 Munkebo	5 439	5 322
251 Kirke Hyllinge	1 121	1 431	775 Møldrup	1 254	1 266
251 Kirke Sonnerup	•	1 015	733 Mørke	1 342	1 392
257 Kirke Såby	1 606	1 685	341 Mørkøv	1 690	1 759
189 Kirke Værløse <sup>1</sup>	•	1 096	Måløv <sup>1</sup>	•	8 010
771 Kjellerup	4 008	4 360	151 Of which in Ballerup Municipality	•	6 734
851 Klarup	3 763	3 680	189 Of which in Værløse Municipality	•	1 276
519 Kliplev	1 110	1 211	751 Mårslet	2 406	2 607
621 Kolding	45 514	54 137	367 Nakskov	14 922	14 426
721 Kolind	1 531	1 612	461 Neder Holluf	5 796	5 567
503 Kollund	•	1 053	397 Neder Vindinge	1 985	1 939
751 Kolt	4 378	4 971	405 Nexø	3 653	3 774
837 Kongerslev	1 329	1 322	831 Nibe	3 658	4 111
431 Korinth	1 027	1 075	227 Nivå <sup>1</sup>	•	8 094
325 Korsør	14 659	14 801	523 Nordborg	7 868	7 544
503 Kruså	1 875	1 763	563 Nordby	2 603	2 586
225 Kulhuse	•	1 061	787 Nors	1 117	1 105
477 Kværndrup	1 459	1 563	219 Ny Hammersholt	1 448	1 425
259 Køge	31 801	33 320	449 Nyborg	15 352	15 766
835 Kås	2 075	2 017	533 Nybøl	•	1 005
441 Langeskov	3 505	3 641	327 Nykøbing S	5 258	5 403
717 Langå	2 573	2 607	369 Nykøbing F	19 127	16 641
261 Lejre	1 787	2 068	773 Nykøbing M	9 337	9 212
667 Lem	1 401	1 457	397 Nyråd	2 108	2 180
665 Lemvig	7 281	7 280	371 Nysted	1 448	1 413
Lille Skensved	1 374	1 328	461 Næsbyhoved Broby	1 063	1 087
259 Of which in Køge Municipality	1 374	1 266	373 Næstved	38 185	39 880
269 Of which in Solrød Municipality <sup>1</sup>	•	62	219 Nødebo	1 683	1 874
201 Lillerød <sup>1</sup>	•	15 343	375 Nørre Alslev	2 157	2 138
657 Lind	3 523	3 744	425 Nørre Broby	1 339	1 381
627 Lindved	1 072	1 136	849 Nørre Halne	1 172	1 156
211 Liseleje	2 482	2 893	497 Nørre Lyndelse	1 699	1 673
615 Lund	1 275	1 317	553 Nørre Nebel	1 213	1 210
623 Lunderskov	2 232	2 634	625 Nørre Snede	1 851	1 881
201 Lyng <sup>1</sup>	•	3 854	451 Nørre Aaby	2 555	2 697
751 Lystrup	7 908	9 115	727 Odder	9 478	10 399
791 Løgstrup	1 408	1 434	461 Odense	140 886	144 636
827 Løgstor	4 334	4 541	555 Oksbøl	2 474	2 794
751 Løgten	4 219	4 586	427 Ollerup	1 122	1 140
521 Løgumkloster	3 120	3 113	261 Osted	2 024	2 001
545 Løjt Kirkeby	1 971	1 929			

<sup>1</sup> The Greater Copenhagen Region: In 1999 12 municipalities comprising 40 towns were no longer included in the Greater Copenhagen Region. <sup>2</sup> Is included in Hedensted By.

**Table 43** (continued) **Population in urban areas with over 1 000 inhabitants**

Per 1 January	Population 1992	Population 2002		Population 1992	Population 2002
471 Otterup	4 471	4 498	531 Skærbæk	3 169	3 136
731 Over Hornbæk	1 537	1 555	231 Skævinge	1 480	1 688
543 Over Jerstal	1 248	1 166	843 Skørping	2 068	2 395
			479 Skårup	1 401	1 447
503 Padborg	4 803	4 696	333 Slagelse	29 583	31 455
835 Pandrup	2 609	2 819	233 Slangstrup	5 418	6 188
377 Præstø	3 401	3 604	Smørumnedre <sup>1</sup>	•	8 749
			151 Of which in Ballerup Municipality	•	125
215 Ramløse	1 419	1 482	171 Of which in Ledøje-Smørum Municip.	•	8 624
731 Randers	55 358	56 102	787 Snedsted	1 106	1 168
479 Rantzausminde	1 508	1 695	657 Snejbjerg	3 597	3 549
827 Ranum	1 204	1 198	607 Snoghøj	1 902	2 277
321 Regstrup	1 529	1 635	751 Solbjerg	2 640	2 801
743 Resenbro	1 407	1 582	269 Solrød Strand <sup>1</sup>	•	14 427
571 Ribe	7 892	8 033	543 Sommersted	1 088	1 109
473 Ringe	4 699	4 896	335 Sorø	6 454	6 928
667 Ringkøbing	8 764	9 166	729 Spentrup	2 260	2 250
329 Ringsted	17 457	18 476	681 Spjald	1 304	1 298
513 Rinkenæs	1 146	1 207	515 Starup	2 067	2 124
265 Roskilde	40 928	43 343	207 Stavnsholt <sup>1</sup>	•	5 800
777 Roslev	1 363	1 394	751 Stavtrup	3 039	3 556
475 Rudkøbing	4 881	4 791	365 Stege	3 822	4 004
303 Ruds Vedby	1 391	1 458	337 Stenlille	1 670	1 837
737 Ry	4 539	4 804	Stenløse	11 904	12 960
721 Ryomgård	1 821	1 911	235 Of which in Stenløse Municipality	5 074	5 197
477 Ryslinge	1 830	1 808	237 Of which in Ølstykke Municipality	6 830	7 763
383 Rødby	2 513	2 481	427 Stenstrup	1 448	1 514
383 Rødbyhavn	2 200	2 118	361 Stensved	1 268	1 383
781 Rødding	1 002	•	717 Stevnstrup	1 415	1 457
527 Rødding	2 535	2 578	461 Stige	2 158	2 225
529 Rødekro	4 857	5 332	745 Stilling	3 295	3 559
761 Rødkærsbro	1 639	1 660	763 Stoholm	2 032	2 126
389 Rødvig	1 356	1 374	389 Store Heddinge	3 108	3 454
739 Rønne	1 915	2 207	345 Store Merløse	1 223	1 264
407 Rønne	14 389	14 060	837 Storvorde	2 479	2 733
385 Rønnede	2 045	2 125	813 Strandby	2 510	2 493
327 Rørvig	•	1 050	445 Strib	3 847	4 185
			671 Struer	11 344	11 313
751 Sabro	1 472	1 944	271 Strøby Egede	2 494	2 636
387 Saksøbing	4 742	4 844	391 Stubbekøbing	2 235	2 244
461 Sankt Klemens	2 684	2 670	545 Stubbæk	1 103	1 212
461 Seden	2 814	3 213	845 Støvring	5 508	5 933
169 Sengeløse <sup>1</sup>	•	1 252	845 Suldrup	1 026	1 100
743 Silkeborg	35 027	37 512	369 Sundby <sup>2</sup>	•	2 914
839 Sindal	3 046	2 966	657 Sunds	3 423	3 444
841 Skagen	11 248	10 232	405 Svaneke	1 126	1 134
775 Skals	1 560	1 725	301 Svebølle	2 046	2 153
745 Skanderborg	11 470	12 974	743 Svejbæk	3 271	3 600
229 Skibby	2 431	2 548	479 Svendborg	26 525	27 634
779 Skive	19 711	20 679	325 Svenstrup	1 766	1 764
669 Skjern	6 878	7 114	851 Svenstrup	4 617	4 525
527 Skodborg	1 202	1 283	339 Svinninge	2 272	2 390
181 Skodsborg <sup>1</sup>	•	1 296	265 Svogerslev	4 285	4 201
703 Skovby	2 425	2 399	847 Sæby	8 424	8 580
331 Skælskør	5 936	6 212	713 Søften	1 900	2 090
607 Skærbæk	1 434	1 708	359 Søllested	1 500	1 509

<sup>1</sup> The Greater Copenhagen Region: In 1999 12 municipalities comprising 40 towns were no longer included in the Greater Copenhagen Region. <sup>2</sup> In 1992 included in Nykøbing F.

Table 43

## Population in urban areas with over 1 000 inhabitants

Per 1 january	Population 1992	Population 2002		Population 1992	Population 2002
621 Sønder Bjert	1 828	1 841	265 Veddelev	1 168	1 161
685 Sønder Felding	1 407	1 494	575 Vejen	8 250	8 483
565 Sønder Omme	1 843	1 793	425 Vejle	1 038	•
537 Sønderborg	25 551	26 806	631 Vejle	46 074	49 359
483 Søndersø	2 921	2 856	235 Veksø	1 780	1 935
311 Sørbymagle	1 002	1 057	679 Vemb	1 282	1 372
155 Søvang <sup>1</sup>	•	1 712	267 Vemmedrup	1 790	1 680
			851 Vestbjerg	2 432	2 282
655 Tarm	4 119	3 917	817 Vester Hassing	2 158	2 238
561 Tarp	1 269	1 332	605 Vester Nebel	•	1 193
607 Taulov	2 569	2 872	533 Vester Sottrup	1 304	1 307
401 Tejn	1 095	1 013	791 Viborg	29 867	32 903
843 Terndrup	1 586	1 529	263 Viby	4 148	4 455
749 Them	1 728	1 789	681 Videbæk	3 862	4 018
787 Thisted	12 677	12 753	343 Vig	1 234	1 306
739 Thorsager	1 244	1 254	677 Vildbjerg	3 240	3 579
767 Thorsø	1 440	1 505	479 Vindeby	2 187	2 113
479 Thurø	3 245	3 242	683 Vinderup	2 917	3 036
673 Thyborøn	2 832	2 677	265 Vindinge	1 823	2 027
611 Thyregod	1 232	1 238	315 Vipperød	2 223	2 306
539 Tinglev	2 754	2 856	743 Virklund	2 456	3 007
577 Tistrup St.by	1 295	1 428	491 Vissenbjerg	3 123	3 156
215 Tisvilde	1 581	1 775	851 Vodskov	4 309	4 325
561 Tjæreborg	2 085	2 146	543 Vojens	7 704	7 927
525 Tofthund	3 551	3 403	551 Vorbasse	1 095	1 190
485 Tommerup	1 430	1 594	397 Vordingborg	8 660	8 686
485 Tommerup St.by	2 015	2 113	829 Vrå	2 203	2 287
751 Tranbjerg	7 272	7 464	395 Væggerløse	1 442	1 336
751 Trige	2 133	2 346	189 Værløse <sup>1</sup>	•	12 238
479 Troense	1 155	1 121			
181 Trørød <sup>1</sup>	•	8 716	493 Ærøskøbing	1 108	1 008
219 Tulstrup	1 261	1 242			
253 Tune <sup>1</sup>	•	5 060	605 Ødsted	1 210	1 241
661 Tvis	1 097	1 082	577 Ølgod	3 801	3 941
851 Tylstrup	1 076	1 129	211 Ølsted	1 346	1 445
345 Tølløse	2 780	3 028	237 Ølstykke St.	5 243	5 296
541 Tønder	8 019	8 186	495 Ørbæk	1 232	1 404
627 Tørring	2 149	2 320	397 Ørslev	1 926	1 817
821 Tårs	1 773	1 933	735 Ørsted	1 310	1 514
Taastrup <sup>1</sup>	•	31 093	789 Ørum	1 063	1 214
169 Of which in Høje Taastrup Municip.	•	31 082	609 Østbirk	1 505	1 518
183 Of which in Ishøj Municipality	•	11	847 Øster Vrå	1 299	1 385
317 Ubby	1 222	1 202			
627 Uldum	1 188	1 170	545 Aabenraa	15 799	16 190
679 Ulfborg	1 824	1 924	849 Aabybro	4 281	4 628
489 Ullerslev	2 460	2 621	255 Ågerup	1 279	1 354
817 Ulsted	1 065	1 059	409 Aakirkeby	2 138	2 121
767 Ulstrup	1 803	1 933	851 Aalborg	114 970	120 359
321 Undløse	•	1 050	841 Ålbæk	1 664	1 584
			793 Aalestrup	2 714	2 797
851 Vadum	2 217	2 226	751 Århus	204 139	220 217
629 Vamdrup	4 027	4 480	861 Aars	6 915	7 252
573 Varde	12 106	12 861	497 Årslev	2 874	3 112
317 Ubby	1 222	1 202	499 Aarup	2 427	2 553

<sup>1</sup> The Greater Copenhagen Region: In 1999 12 municipalities comprising 40 towns were no longer included in the Greater Copenhagen Region.

**Table 44 (continued) Population in municipalities and counties 2002**

Per 1 January	Population	Urban areas	Population density		Population	Urban areas	Population density		
<b>All Denmark</b>	<b>5 368 354</b>	<b>4 572 047</b>	<b>124,6</b>	261	Lejre	8 562	5 859	97,1	
101	Copenhagen	500 531	500 531	5 671,7	263	Ramsø	9 241	6 886	136,7
147	Frederiksberg	91 322	91 322	10 413,0	265	Roskilde	53 168	51 627	658,5
<b>15</b>	<b>Copenhagen County</b>	<b>617 336</b>	<b>613 228</b>	<b>1 168,6</b>	267	Skovbo	13 884	10 614	105,4
165	Albertslund	29 130	29 130	1 264,3	269	Solrød	20 165	19 246	504,3
151	Ballerup	46 342	46 102	1 359,4	271	Vallø	10 287	7 360	122,7
153	Brøndby	34 542	34 542	1 672,7	<b>30</b>	<b>West Zealand County</b>	<b>298 731</b>	<b>219 470</b>	<b>100,1</b>
155	Dragør	13 075	12 766	720,8	301	Bjergsted	7 808	4 457	56,3
157	Gentofte	68 213	68 213	2 670,8	303	Dianalund	7 288	5 472	108,7
159	Gladsaxe	61 914	61 914	2 476,6	305	Dragsholm	13 656	8 527	89,6
161	Glostrup	20 412	20 412	1 533,6	307	Fuglebjerg	6 538	2 896	46,5
163	Herlev	27 498	27 498	2 283,9	309	Gørlev	6 323	3 788	68,7
167	Hvidovre	49 674	49 674	2 267,2	311	Hashøj	6 450	2 390	49,3
169	Høje-Taastrup	45 947	44 398	586,0	313	Haslev	14 310	11 504	107,9
183	Ishøj	20 987	20 325	809,1	315	Holbæk	34 188	29 490	214,4
171	Ledøje-Smørum	10 347	9 370	330,3	317	Hvidebæk	5 454	2 570	55,5
173	Lyngby-Taarbæk	51 102	51 102	1 314,4	319	Høng	8 352	4 547	57,8
175	Rødovre	36 591	36 591	3 019,1	321	Jernløse	5 789	3 218	56,4
181	Søllerød	31 498	31 321	792,0	323	Kalundborg	19 718	16 825	151,4
185	Tårnby	39 522	39 522	608,5	325	Korsør	20 528	18 645	275,3
187	Vallensbæk	12 177	12 177	1 330,8	327	Nykøbing-Rørvig	7 459	6 453	186,5
189	Værløse	18 365	18 171	540,3	329	Ringsted	30 018	22 678	101,6
<b>20</b>	<b>Frederiksborg County</b>	<b>370 555</b>	<b>330 082</b>	<b>275,0</b>	331	Skælskør	11 647	7 901	68,5
201	Allerød	23 070	21 460	342,1	333	Slagelse	36 593	32 285	190,6
205	Birkerød	21 531	20 521	641,4	335	Sorø	15 029	11 045	100,6
207	Farum	18 854	18 270	830,9	337	Stenlille	5 421	2 844	57,9
208	Fredensborg-				339	Svinninge	6 487	4 227	75,5
	Humblebæk	19 734	17 413	274,0	341	Tornved	8 992	6 887	85,9
209	Frederikssund	18 189	16 967	446,6	343	Trundholm	11 214	4 987	68,9
211	Frederiksværk	20 326	17 365	227,0	345	Tølløse	9 469	5 834	75,1
213	Græsted-Gilleleje	20 773	13 441	154,8	<b>35</b>	<b>Storstrøm County</b>	<b>260 498</b>	<b>185 205</b>	<b>76,7</b>
215	Helsingø	18 910	13 350	129,7	351	Fakse	12 418	8 470	84,6
217	Helsingør	60 546	57 317	497,9	353	Fladså	7 405	3 515	55,9
219	Hillerød	37 167	34 633	280,0	355	Holeby	4 148	2 280	35,7
221	Hundested	9 619	8 460	304,1	357	Holmegaard	7 006	5 674	106,0
223	Hørsholm	24 038	23 412	766,0	359	Højreby	4 193	1 509	32,8
225	Jægerspris	9 460	7 788	99,0	361	Langebæk	6 264	4 062	62,2
227	Karlebo	19 584	18 319	488,7	363	Maribo	11 078	8 416	71,9
229	Skibby	6 546	4 702	81,9	365	Møn	11 720	6 140	49,4
231	Skævinge	5 594	3 848	81,7	367	Nakskov	15 207	14 664	465,5
233	Slangør	8 785	7 407	192,8	369	Nykøbing F	25 534	23 361	190,8
235	Stenløse	13 252	11 757	202,8	371	Nysted	5 519	2 844	38,8
237	Ølstykke	14 577	13 652	500,6	373	Næstved	47 092	42 757	235,6
<b>25</b>	<b>Roskilde County</b>	<b>234 820</b>	<b>211 647</b>	<b>263,4</b>	375	Nørre Alslev	9 492	4 950	52,4
251	Bramsnæs	9 163	6 812	114,7	377	Præstø	7 453	4 795	69,7
253	Greve	48 278	47 322	802,2	379	Ravnshøj	5 664	1 956	28,7
255	Gundsø	15 174	13 589	238,8	381	Rudbjerg	3 576	826	24,9
257	Hvalsø	7 614	6 028	105,7	383	Rødby	6 793	4 599	56,4
259	Køge	39 284	36 304	317,5	385	Rønnede	6 954	3 946	55,6
					387	Sakskøbing	9 375	5 314	53,2

Note: Urban areas refers to an area of unbroken buildings with at least 200 inhabitants. The Greater Copenhagen Region belongs to the category of urban area. Population density refers to number of inhabitants per km<sup>2</sup>.

**Table 44** (continued) **Population in municipalities and counties 2002**

Per 1 January	Population	Urban areas	Population density	Population	Urban areas	Population density	
389 Stevns	11 205	7 053	67,4	509 Christiansfeld	9 533	4 733	45,1
391 Stubbekøbing	6 868	3 181	43,9	511 Gram	4 901	3 433	37,3
393 Suså	8 185	4 535	56,5	513 Gråsten	7 117	6 029	125,6
395 Sydfalster	7 026	3 583	62,0	515 Haderslev	31 675	25 936	116,4
397 Vordingborg	20 323	16 775	115,2	517 Højer	3 048	1 536	26,1
<b>40 Bornholm County</b>	<b>44 197</b>	<b>32 070</b>	<b>75,1</b>	519 Lundtoft	6 206	4 018	45,2
401 Allinge-Gudhjem	7 632	4 499	49,4	521 Løgumkloster	6 940	4 766	34,7
403 Hasle	6 360	3 901	55,5	523 Nordborg	14 090	12 143	112,9
405 Nexø	8 580	6 420	82,7	525 Nørre Rangstrup	9 700	6 123	32,1
407 Rønne	14 826	14 060	509,3	527 Rødding	10 888	6 711	39,8
409 Aakirkeby	6 693	3 190	35,9	529 Rødekro	11 359	8 668	56,3
411 Christiansø	106	•	265,0	531 Skærbæk	7 485	4 824	20,8
<b>42 Funen County</b>	<b>472 504</b>	<b>383 385</b>	<b>135,5</b>	533 Sundeved	5 195	3 659	74,9
421 Assens	10 764	7 604	77,2	535 Sydals	6 475	4 244	68,4
423 Bogense	6 350	3 354	62,5	537 Sønderborg	30 054	29 374	552,0
425 Broby	6 264	3 763	62,7	539 Tinglev	10 292	6 578	31,6
427 Egebjerg	8 792	4 989	71,0	541 Tønder	12 693	10 317	68,8
429 Ejby	9 945	5 539	61,1	543 Vojens	16 778	13 154	56,2
431 Faaborg	17 278	12 697	76,0	545 Aabenraa	22 039	19 688	171,3
433 Glamsbjerg	6 019	4 143	65,8	<b>55 Ribe County</b>	<b>224 444</b>	<b>180 679</b>	<b>71,7</b>
435 Gudme	6 250	3 351	52,1	551 Billund	8 692	7 066	56,2
437 Haarby	5 037	2 975	63,2	553 Blåbjerg	6 480	3 027	25,5
439 Kerteminde	11 013	7 176	76,9	555 Blåvandshuk	4 327	3 200	19,4
441 Langeskov	6 241	4 658	143,6	557 Bramming	13 667	10 117	80,6
443 Marstal	3 331	2 735	198,9	559 Brørup	6 504	4 792	60,8
445 Middelfart	20 018	18 086	276,8	561 Esbjerg	82 341	79 139	372,7
447 Munkebo	5 756	5 322	298,5	563 Fanø	3 227	2 824	57,9
449 Nyborg	18 766	17 131	224,6	565 Grindsted	17 321	13 318	45,3
451 Nørre Aaby	5 407	3 442	83,3	567 Helle	8 361	4 467	29,8
461 Odense	183 628	176 156	603,4	569 Holsted	7 015	4 203	36,9
471 Otterup	10 919	6 357	64,8	571 Ribe	18 140	12 344	51,5
473 Ringe	11 112	6 301	72,2	573 Varde	20 193	16 544	80,3
475 Rudkøbing	6 735	4 791	107,0	575 Vejen	16 654	12 316	68,2
477 Ryslinge	7 107	4 921	87,0	577 Ølgod	11 522	7 322	46,7
479 Svendborg	42 889	38 575	248,2	<b>60 Vejle County</b>	<b>351 328</b>	<b>291 924</b>	<b>117,2</b>
481 Sydlangeland	4 192	1 920	34,7	601 Brædstrup	8 556	4 342	42,5
483 Sønder sø	11 169	6 279	61,6	603 Børkop	11 077	7 885	107,4
485 Tommerup	7 838	5 637	106,4	605 Egtved	15 142	9 273	46,6
487 Tranekær	3 519	1 785	32,8	607 Fredericia	48 487	46 353	360,6
489 Ullerslev	5 009	3 217	92,2	609 Gedved	9 835	6 290	64,9
491 Vissenbjerg	6 174	4 530	130,3	611 Give	14 140	8 220	35,1
493 Ærøskøbing	3 869	2 084	52,5	613 Hedensted	16 381	12 543	119,3
495 Ørbæk	6 747	3 617	48,8	615 Horsens	57 175	53 919	302,8
497 Årslev	8 972	7 060	120,7	617 Jelling	5 686	2 876	63,6
499 Aarup	5 394	3 190	67,0	619 Juelsminde	15 233	8 851	63,6
<b>50 South Jutland County</b>	<b>253 166</b>	<b>196 689</b>	<b>64,3</b>	621 Kolding	62 320	58 204	261,1
501 Augustenborg	6 441	4 831	120,8	623 Lunderskov	5 432	3 370	56,8
503 Bov	10 170	8 250	68,8	625 Nørre Snede	7 224	4 613	28,4
505 Bredebro	3 792	2 383	25,2	627 Tørring-Uldum	12 315	7 715	65,0
507 Broager	6 295	5 291	145,1	629 Vamdrup	7 241	5 462	71,3
				631 Vejle	55 084	52 008	382,6

Note: Urban areas refers to an area of unbroken buildings with at least 200 inhabitants. The Greater Copenhagen Region belongs to the category of urban area. Population density refers to number of inhabitants per km<sup>2</sup>.

Table 44

## Population in municipalities and counties 2002

Per 1 January	Population	Urban areas	Population density	Population	Urban areas	Population density	
<b>65 Ringkøbing County</b>	<b>274 385</b>	<b>214 302</b>	<b>56,5</b>	<b>76 Viborg County</b>	<b>234 323</b>	<b>166 107</b>	<b>56,8</b>
651 Aulum-Haderup	6 700	4 456	27,1	761 Bjerringbro	13 862	9 807	67,1
653 Brande	8 701	6 537	46,3	763 Fjends	8 093	4 909	34,3
655 Egvad	9 571	5 556	25,4	765 Hanstholm	5 905	4 537	27,3
657 Herning	58 624	52 569	108,2	767 Hvorslev	6 850	4 185	53,5
659 Holmsland	5 346	3 941	56,5	769 Karup	6 708	5 433	41,3
661 Holstebro	40 994	36 716	116,8	771 Kjellerup	13 830	8 529	54,1
663 Ikast	23 002	19 741	78,2	773 Morsø	22 666	14 262	61,6
665 Lemvig	18 517	11 366	39,8	775 Møldrup	7 632	4 484	36,0
667 Ringkøbing	17 747	13 037	44,3	777 Sallingsund	6 276	4 127	63,1
669 Skjern	13 025	8 996	39,8	779 Skive	28 011	24 840	121,6
671 Struer	19 290	15 923	110,5	781 Spøttrup	7 965	4 291	42,0
673 Thyborøn-Harboøre	4 926	4 478	116,1	783 Sundsøre	6 647	3 167	38,8
675 Thyholm	3 706	1 841	48,6	785 Sydthy	11 386	6 212	35,4
677 Trehøje	9 857	6 942	33,3	787 Thisted	29 499	19 979	52,3
679 Ulfborg-Vemb	7 050	4 576	31,3	789 Tjele	8 432	4 338	30,8
681 Videbæk	12 176	8 099	42,1	791 Viborg	42 894	38 119	137,2
683 Vinderup	8 162	4 879	36,5	793 Aalestrup	7 667	4 888	43,6
685 Åskov	6 991	4 649	29,3				
<b>70 Århus County</b>	<b>644 666</b>	<b>556 368</b>	<b>141,3</b>	<b>80 North Jutland County</b>	<b>495 548</b>	<b>399 038</b>	<b>80,3</b>
701 Ebeltøft	14 749	8 530	53,5	801 Arden	8 521	5 256	37,4
703 Galten	10 623	9 153	146,1	803 Brovst	8 448	5 579	37,9
705 Gjern	7 802	4 575	54,3	805 Brønderslev	20 133	14 432	63,5
707 Grenaa	18 701	15 736	95,2	807 Dronninglund	15 264	9 806	48,3
709 Hadsten	11 509	9 421	82,8	809 Farsø	8 163	5 186	40,5
711 Hammel	10 576	7 623	73,6	811 Fjerritslev	8 474	4 425	29,3
713 Hinnerup	11 496	9 785	150,6	813 Frederikshavn	34 527	31 967	192,3
715 Høring	8 380	6 171	123,8	815 Hadsund	10 847	8 355	63,7
717 Langå	8 195	5 770	61,8	817 Hals	11 404	8 257	59,8
719 Mariager	8 332	5 139	41,4	819 Hirtshals	14 418	11 409	73,6
721 Midtdjurs	7 696	4 910	43,1	821 Hjørring	35 558	28 831	114,2
723 Nørhald	8 621	5 537	42,9	823 Hobro	15 213	12 422	91,8
725 Nørre Djurs	7 764	3 960	32,8	825 Læsø	2 268	1 314	19,9
727 Odder	20 396	14 323	90,6	827 Løgstør	10 568	7 289	48,5
729 Purhus	8 618	5 786	51,1	829 Løkken-Vrå	8 924	5 001	49,4
731 Randers	62 306	59 652	405,5	831 Nibe	8 046	5 593	43,4
733 Rosenholm	10 137	6 678	71,9	833 Nørager	5 586	2 361	33,3
735 Rougsø	8 215	5 164	36,7	835 Pandrup	10 710	7 852	56,5
737 Ry	10 653	7 398	69,9	837 Sejflod	9 337	6 330	45,0
739 Rønde	6 776	4 907	67,0	839 Sindal	9 425	4 948	39,0
741 Samsø	4 251	1 744	37,2	841 Skagen	12 378	11 816	86,6
743 Silkeborg	53 253	49 199	208,6	843 Skørping	9 834	6 181	41,3
745 Skanderborg	21 569	18 158	150,6	845 Støvring	12 669	8 664	57,7
747 Sønderhald	8 324	5 852	60,4	847 Sæby	18 087	12 951	55,5
749 Them	6 887	4 382	32,7	849 Aabybro	11 256	9 183	65,9
751 Århus	288 837	276 815	616,0	851 Aalborg	162 264	154 115	289,6
				861 Aars	13 226	9 515	59,4

Note: Urban areas refers to an area of unbroken buildings with at least 200 inhabitants. The Greater Copenhagen Region belongs to the category of urban area. Population density refers to number of inhabitants per km<sup>2</sup>.

Table 45

## Population of counties by sex and age 2002

Per 1 January	0-6 years	7-16 years	17-24 years	25-39 years	40-64 years	65 years +	Total population
<b>Males and females, total</b>	<b>475 844</b>	<b>645 422</b>	<b>482 455</b>	<b>1 194 091</b>	<b>1 775 958</b>	<b>794 584</b>	<b>5 368 354</b>
<b>Males, total</b>	<b>243 917</b>	<b>331 143</b>	<b>244 421</b>	<b>606 900</b>	<b>893 915</b>	<b>333 850</b>	<b>2 654 146</b>
Copenhagen Municipality	21 324	19 191	27 184	89 587	65 637	22 020	244 943
Frederiksberg Municipality	3 743	2 950	3 517	14 479	12 687	5 396	42 772
Copenhagen County	28 515	39 022	26 167	62 752	103 544	39 523	299 523
Frederiksborg County	18 049	24 788	13 548	36 281	67 126	22 550	182 342
Roskilde County	11 654	15 254	9 102	25 288	42 531	12 460	116 289
West Zealand County	13 241	19 301	12 479	30 728	52 751	19 787	148 287
Storstrøm County	10 222	15 972	10 429	24 112	48 287	20 124	129 146
Bornholm County	1 665	2 854	1 729	3 710	8 329	3 507	21 794
Funen County	20 618	29 426	21 529	50 552	79 542	31 710	233 377
South Jutland County	11 366	17 149	11 274	25 106	43 655	17 679	126 229
Ribe County	10 579	15 460	10 680	23 578	37 937	14 223	112 457
Vejle County	16 706	22 721	16 034	39 221	58 432	21 860	174 974
Ringkøbing County	13 161	19 120	13 226	29 222	45 959	17 208	137 896
Århus County	30 437	39 749	32 654	75 213	104 913	35 652	318 618
Viborg County	10 932	16 210	10 598	23 720	40 034	16 468	117 962
North Jutland County	21 705	31 976	24 271	53 351	82 551	33 683	247 537
<b>Females, total</b>	<b>231 927</b>	<b>314 279</b>	<b>238 034</b>	<b>587 191</b>	<b>882 043</b>	<b>460 734</b>	<b>2 714 208</b>
Copenhagen Municipality	20 020	18 278	32 631	82 551	61 049	41 059	255 588
Frederiksberg Municipality	3 617	2 855	4 227	13 951	13 602	10 298	48 550
Copenhagen County	27 069	36 969	24 537	63 758	107 582	57 898	317 813
Frederiksborg County	17 343	23 236	12 457	38 107	68 376	28 694	188 213
Roskilde County	10 804	14 500	8 582	25 703	43 039	15 903	118 531
West Zealand County	12 535	18 646	11 849	29 849	51 359	26 206	150 444
Storstrøm County	9 820	15 257	9 605	23 551	46 983	26 136	131 352
Bornholm County	1 659	2 768	1 434	3 776	8 068	4 698	22 403
Funen County	19 818	27 934	20 583	48 718	78 569	43 505	239 127
South Jutland County	10 634	16 574	10 314	23 900	42 695	22 820	126 937
Ribe County	10 285	14 845	9 708	22 412	36 466	18 271	111 987
Vejle County	15 960	21 340	15 245	37 673	57 021	29 115	176 354
Ringkøbing County	12 599	17 875	12 268	27 286	44 352	22 109	136 489
Århus County	28 892	37 908	32 664	73 678	103 677	49 229	326 048
Viborg County	10 275	15 026	9 520	22 590	38 094	20 856	116 361
North Jutland County	20 597	30 268	22 410	49 688	81 111	43 937	248 011

Table 46

## Population change by county 2001

	Population 1 Jan. 2001	Live births	Deaths	From rest of Denmark	From foreign countries	Increase <sup>1</sup>	Population 1 Jan. 2002
	—— Net migration into area ——						
<b>Total</b>	<b>5 349 212</b>	<b>65 450</b>	<b>58 338</b>	<b>-</b>	<b>12 004</b>	<b>19 142</b>	<b>5 368 354</b>
Copenhagen Municipality	499 148	8 123	6 136	- 379	- 40	1 383	500 531
Frederiksberg Municipality	91 076	1 480	1 251	- 61	113	246	91 322
Copenhagen County	615 115	7 094	6 702	530	1 161	2 221	617 336
Frederiksborg County	368 116	4 333	3 495	779	788	2 439	370 555
Roskilde County	233 212	2 726	1 989	340	486	1 608	234 820
West Zealand County	296 875	3 330	3 567	1 221	884	1 856	298 731
Storstrøm County	259 691	2 549	3 489	1 049	706	807	260 498
Bornholm County	44 126	379	548	100	148	71	44 197
Funen County	472 064	5 383	5 310	- 725	1 066	440	472 504
South Jutland County	253 249	2 793	2 672	- 887	705	- 83	253 166
Ribe County	224 446	2 709	2 391	- 838	503	- 2	224 444
Vejle County	349 186	4 372	3 617	488	896	2 142	351 328
Ringkøbing County	273 517	3 509	2 801	- 650	790	868	274 385
Århus County	640 637	8 336	6 029	152	1 565	4 029	644 666
Viborg County	233 921	2 734	2 640	- 447	752	402	234 323
North Jutland County	494 833	5 600	5 701	- 672	1 481	715	495 548

<sup>1</sup> Incl. corrections which include missing and found persons and a balancing item.



Table 47

## Foreign nationals resident in Denmark, by citizenship 2002

Per 1 January	Males				Females				Total		
	0-14 years	15-64 years	65 years +	Total	0-14 years	15-64 years	65 years +	Total	1980	2001	2002
<b>Total</b>	<b>30 070</b>	<b>96 236</b>	<b>5 069</b>	<b>131 375</b>	<b>28 211</b>	<b>100 403</b>	<b>6 740</b>	<b>135 354</b>	<b>99 796</b>	<b>258 629</b>	<b>266 729</b>
Europe	15 590	61 282	3 477	80 349	14 635	61 121	4 585	80 341	73 672	159 452	160 690
Of which: Belgium	30	239	8	277	34	218	21	273	271	520	550
Bosnia-Herzegovina	2 411	7 112	555	10 078	2 229	6 853	656	9 738	-	20 151	19 816
Finland	125	511	54	690	102	1 168	124	1 394	2 201	2 085	2 084
France	157	1 700	20	1 877	128	1 184	52	1 364	1 734	3 296	3 241
Greece	25	473	18	516	11	139	9	159	572	660	675
Netherlands	544	2 198	66	2 808	501	1 366	77	1 944	1 555	4 531	4 752
Ireland	37	660	10	707	33	356	6	395	853	1 094	1 102
Iceland	801	2 227	52	3 080	668	2 198	83	2 949	2 651	5 873	6 029
Italy	97	1 863	59	2 019	98	785	26	909	1 729	2 833	2 928
Yugoslavia (former)	1 676	3 909	294	5 879	1 626	3 640	329	5 595	7 126	11 530	11 474
Yugoslavia, Fed. Rep.	372	558	20	950	345	523	18	886	-	1 188	1 836
Latvia	30	259	1	290	28	538	4	570	-	742	860
Lithuania	45	522	-	567	37	892	-	929	-	1 221	1 496
Luxembourg	-	13	-	13	-	6	-	6	9	18	19
Macedonia	234	616	14	864	196	610	24	830	-	1 545	1 694
Norway	742	4 326	475	5 543	717	6 137	753	7 607	10 030	12 966	13 150
Poland	368	1 348	30	1 746	373	3 487	129	3 989	970	5 548	5 735
Portugal	18	290	6	314	29	223	5	257	245	555	571
Romania	52	330	16	398	64	670	44	778	49	1 106	1 176
Russia	208	469	8	685	194	1 462	17	1 673	-	2 056	2 358
Switzerland	28	504	81	613	24	458	82	564	1 226	1 160	1 177
Spain	42	957	21	1 020	38	864	19	921	1 048	1 802	1 941
United Kingdom	770	7 180	341	8 291	673	3 483	339	4 495	9 361	12 630	12 786
Sweden	576	3 679	410	4 665	623	4 777	752	6 152	7 726	10 839	10 817
Turkey	5 053	11 477	552	17 082	4 788	11 041	472	16 301	14 086	35 232	33 383
Germany	722	5 799	321	6 842	678	4 931	460	6 069	8 788	12 701	12 911
Ukraine	59	391	2	452	65	549	12	626	-	820	1 078
Austria	21	373	15	409	34	301	15	350	798	746	759
Africa	4 526	8 592	136	13 254	4 213	8 302	247	12 762	4 112	25 490	26 016
Of which: Egypt	47	296	5	348	58	158	19	235	560	594	583
Ghana	54	403	2	459	65	263	3	331	150	746	790
Morocco	358	1 167	48	1 573	342	1 293	60	1 695	1 943	3 293	3 268
Somalia	3 338	4 034	57	7 429	2 974	4 039	143	7 156	102	14 447	14 585
Uganda	86	185	1	272	112	349	3	464	33	726	736
North America	275	3 124	265	3 664	232	2 474	226	2 932	5 096	6 519	6 596
Of which: Canada	46	558	66	670	36	495	56	587	825	1 248	1 257
United States	229	2 566	199	2 994	196	1 979	170	2 345	4 271	5 271	5 339
South and Central America	301	1 311	21	1 633	256	2 060	53	2 369	1 644	3 797	4 002
Of which: Brazil	61	209	-	270	66	647	6	719	129	937	989
Asia	8 581	19 622	1 012	29 215	8 106	24 267	1 439	33 812	13 671	56 534	63 027
Of which: Afghanistan	1 484	2 313	60	3 857	1 354	1 755	95	3 204	26	4 200	7 061
Philippines	161	369	18	548	150	1 507	56	1 713	784	2 147	2 261
India	154	574	20	748	168	437	28	633	1 048	1 282	1 381
Iraq	3 091	5 856	126	9 073	2 779	4 520	169	7 468	102	13 821	16 541
Iran	472	1 853	198	2 523	433	1 707	243	2 383	215	5 013	4 906
Israel	51	381	2	434	40	176	2	218	634	628	652
Japan	26	301	6	333	35	553	29	617	568	904	950
Jordan	98	251	11	360	104	285	15	404	678	785	764
China	225	1 121	60	1 406	272	1 426	62	1 760	212	2 733	3 166
Lebanon	315	616	57	988	309	976	76	1 361	156	2 538	2 349
Pakistan	813	2 408	106	3 327	811	2 904	118	3 833	6 400	7 071	7 160
Sri Lanka	525	1 196	79	1 800	494	1 649	169	2 312	181	4 293	4 112
Syria	75	131	4	210	69	312	12	393	120	588	603
Thailand	342	527	2	871	385	3 660	15	4 060	353	4 430	4 931
Viet Nam	555	1 251	248	2 054	533	1 688	330	2 551	1 319	4 642	4 605
Oceania	44	666	20	730	35	497	14	546	548	1 232	1 276
Of which: Australia	32	459	14	505	26	382	10	418	406	875	923
Stateless and not known	753	1 639	138	2 530	734	1 682	176	2 592	1 053	5 605	5 122



Table 48

## Immigrant population by country of origin 2002

Per 1 January	Immigrants			Descendants			Total		
	Men	Women	Total	Men	Women	Total	Men	Women	Total
<b>Total</b>	<b>158 148</b>	<b>163 646</b>	<b>321 794</b>	<b>47 849</b>	<b>45 688</b>	<b>93 537</b>	<b>205 997</b>	<b>209 334</b>	<b>415 331</b>
More-developed countries	72 345	82 656	155 001	12 073	11 443	23 516	84 418	94 099	178 517
Less-developed countries	85 803	80 990	166 793	35 776	34 245	70 021	121 579	115 235	236 814
Europe	84 074	92 731	176 805	22 592	21 685	44 277	106 666	114 416	221 082
Of which:									
Belgium	356	386	742	35	28	63	391	414	805
Bosnia-Herzegovina	9 187	8 882	18 069	1 157	1 102	2 259	10 344	9 984	20 328
Finland	1 039	2 269	3 308	283	236	519	1 322	2 505	3 827
France	1 860	1 456	3 316	149	141	290	2 009	1 597	3 606
Greece	658	218	876	41	35	76	699	253	952
Netherlands	2 609	1 908	4 517	347	321	668	2 956	2 229	5 185
Ireland	651	395	1 046	51	41	92	702	436	1 138
Iceland	2 736	2 822	5 558	358	290	648	3 094	3 112	6 206
Italy	2 110	893	3 003	92	103	195	2 202	996	3 198
Yugoslavia (former)	6 415	6 052	12 467	2 599	2 536	5 135	9 014	8 588	17 602
Yugoslavia, Fed. Rep.	798	721	1 519	97	102	199	895	823	1 718
Lithuania	574	934	1 508	23	23	46	597	957	1 554
Luxembourg	25	25	50	2	1	3	27	26	53
Macedonia	799	728	1 527	351	339	690	1 150	1 067	2 217
Norway	4 879	8 546	13 425	802	772	1 574	5 681	9 318	14 999
Poland	3 567	7 013	10 580	1 077	967	2 044	4 644	7 980	12 624
Portugal	331	275	606	28	28	56	359	303	662
Romania	749	1 218	1 967	142	114	256	891	1 332	2 223
Russia	740	1 831	2 571	75	76	151	815	1 907	2 722
Switzerland	588	598	1 186	81	77	158	669	675	1 344
Sovjet Union (former)	500	890	1 390	118	117	235	618	1 007	1 625
Spain	1 154	1 086	2 240	87	50	137	1 241	1 136	2 377
United Kingdom	6 714	3 914	10 628	554	616	1 170	7 268	4 530	11 798
Sweden	4 692	7 773	12 465	1 023	967	1 990	5 715	8 740	14 455
Turkey	16 074	14 288	30 362	11 029	10 768	21 797	27 103	25 056	52 159
Germany	10 387	12 232	22 619	1 386	1 284	2 670	11 773	13 516	25 289
Hungary	696	679	1 375	153	125	278	849	804	1 653
Austria	577	622	1 199	66	62	128	643	684	1 327
Africa	15 839	13 496	29 335	5 934	5 514	11 448	21 773	19 010	40 783
Of which:									
Egypt	847	429	1 276	238	219	457	1 085	648	1 733
Morocco	2 668	2 209	4 877	1 813	1 714	3 527	4 481	3 923	8 404
Somalia	6 348	5 877	12 225	2 651	2 423	5 074	8 999	8 300	17 299
North America	3 678	3 395	7 073	510	502	1 012	4 188	3 897	8 085
Of which:									
Canada	688	773	1 461	185	150	335	873	923	1 796
United States	2 990	2 622	5 612	325	352	677	3 315	2 974	6 289
South and Central America	2 664	3 869	6 533	350	304	654	3 014	4 173	7 187
Asia	50 121	48 789	98 910	18 181	17 439	35 620	68 302	66 228	134 530
Of which:									
Afghanistan	3 968	3 220	7 188	371	342	713	4 339	3 562	7 901
Philippines	790	2 906	3 696	331	296	627	1 121	3 202	4 323
India	1 393	1 089	2 482	468	447	915	1 861	1 536	3 397
Iraq	10 283	7 676	17 959	1 876	1 720	3 596	12 159	9 396	21 555
Iran	6 800	4 625	11 425	1 150	1 050	2 200	7 950	5 675	13 625
Israel	846	426	1 272	101	78	179	947	504	1 451
Jordan	538	399	937	410	401	811	948	800	1 748
China	1 728	2 164	3 892	317	341	658	2 045	2 505	4 550
Kuwait	561	421	982	205	194	399	766	615	1 381
Lebanon	6 572	5 440	12 012	4 318	4 236	8 554	10 890	9 676	20 566
Pakistan	5 632	4 855	10 487	4 164	3 972	8 136	9 796	8 827	18 623
Sri Lanka	3 457	3 369	6 826	1 559	1 612	3 171	5 016	4 981	9 997
Syria	663	818	1 481	603	562	1 165	1 266	1 380	2 646
Thailand	966	4 703	5 669	154	162	316	1 120	4 865	5 985
Viet Nam	4 243	4 236	8 479	1 725	1 630	3 355	5 968	5 866	11 834
Oceania	765	594	1 359	68	58	126	833	652	1 485
Stateless and not known	1 007	772	1 779	214	186	400	1 221	958	2 179



Table 49

## Foreign nationals resident in Denmark 2001

	Number 1 Jan. 2001	Live births	Deaths	Immigra- tion	Emigra- tion	Naturali- zations	Net change	Correc- tions	Number 1 Jan. 2002
<b>Total</b>	<b>258 629</b>	<b>4 404</b>	<b>831</b>	<b>33 654</b>	<b>17 292</b>	<b>11 902</b>	<b>8 033</b>	<b>67</b>	<b>266 729</b>
Europe	159 452	2 025	584	17 208	12 069	5 342	1 238	-	160 690
Of which:									
Belgium	520	4	1	154	120	6	31	- 1	550
Bosnia-Herzegovina	20 151	258	56	310	138	708	- 334	- 1	19 816
Finland	2 085	17	16	396	378	17	2	- 3	2 084
France	3 296	26	8	645	708	8	- 53	- 2	3 241
Greece	660	1	1	114	98	7	9	6	675
Netherlands	4 531	92	13	526	373	15	217	4	4 752
Ireland	1 094	4	2	119	110	1	10	- 2	1 102
Iceland	5 873	114	21	1 201	1 101	23	170	- 14	6 029
Italy	2 833	13	4	613	517	14	91	4	2 928
Yugoslavia (former)	11 530	232	44	258	85	358	3	- 59	11 474
Yugoslavia, Fed. Rep.	1 188	49	1	620	16	3	649	- 1	1 836
Latvia	742	2	-	445	325	6	116	2	860
Lithuania	1 221	5	-	831	565	4	267	8	1 496
Luxembourg	18	1	-	2	2	-	1	-	19
Macedonia	1 545	44	7	95	16	42	74	75	1 694
Norway	12 966	130	84	1 749	1 464	128	203	- 19	13 150
Poland	5 548	33	13	730	435	126	189	- 2	5 735
Portugal	555	3	2	104	94	1	10	6	571
Romania	1 106	10	2	250	101	82	75	- 5	1 176
Russia	2 056	8	3	603	203	106	299	3	2 358
Switzerland	1 160	3	6	98	71	9	15	2	1 177
Spain	1 802	9	1	620	478	12	138	1	1 941
United Kingdom	12 630	129	66	1 203	1 044	72	150	6	12 786
Sweden	10 839	105	87	1 291	1 216	96	- 3	- 19	10 817
Turkey	35 232	571	82	1 069	322	3 130	- 1 894	45	33 383
Germany	12 701	123	53	1 482	1 186	129	237	- 27	12 911
Ukraine	820	5	2	436	150	38	251	7	1 078
Austria	746	5	3	129	111	7	13	-	759
Africa	25 490	969	39	2 562	1 252	1 751	489	37	26 016
Of which:									
Egypt	594	14	3	71	49	47	- 14	3	583
Ghana	746	13	-	129	67	35	40	4	790
Morocco	3 293	68	9	185	56	213	- 25	-	3 268
Somalia	14 447	746	17	1 152	695	1 074	112	26	14 585
Uganda	726	10	3	85	33	48	11	- 1	736
North America	6 519	34	36	1 670	1 527	65	76	1	6 596
Of which:									
Canada	1 248	10	7	245	205	27	16	- 7	1 257
United States	5 271	24	29	1 425	1 322	38	60	8	5 339
South and Central America	3 797	28	2	817	365	251	227	- 22	4 002
Of which: Brazil	937	6	1	188	103	39	51	1	989
Asia	56 534	1 215	150	10 839	1 710	3 631	6 563	- 70	63 027
Of which:									
Afghanistan	4 200	130	10	3 016	38	215	2 883	- 22	7 061
Philippines	2 147	21	3	232	39	94	117	- 3	2 261
India	1 282	16	5	384	135	130	130	- 31	1 381
Iraq	13 821	518	20	3 236	146	871	2 717	3	16 541
Iran	5 013	55	20	400	115	437	- 117	10	4 906
Israel	628	9	2	113	55	42	23	1	652
Japan	904	4	3	275	228	7	41	5	950
Jordan	785	23	3	49	11	80	- 22	1	764
China	2 733	33	4	876	257	195	453	- 20	3 166
Lebanon	2 538	45	11	150	62	309	- 187	- 2	2 349
Pakistan	7 071	140	25	432	163	297	87	2	7 160
Sri Lanka	4 293	65	15	181	55	365	- 189	8	4 112
Syria	588	23	1	66	12	60	16	- 1	603
Thailand	4 430	32	2	752	147	124	511	- 10	4 931
Viet Nam	4 642	79	24	288	56	318	- 31	- 6	4 605
Oceania	1 232	7	5	362	300	13	51	- 7	1 276
Of which: Australia	875	5	4	293	228	13	53	- 5	923
Stateless and not known	5 605	126	15	196	69	849	- 611	128	5 122

Table 50

## Fertility and reproduction

	Live births	Crude birth rate	General fertility rate	Total fertility rate	Gross reproduction rate	Net reproduction rate
1970	70 802	14.4	61.4	1 950	948	927
1971	75 359	15.2	65.2	2 043	987	965
1972	75 505	15.1	65.1	2 029	990	970
1973	71 895	14.3	61.6	1 917	934	915
1974	71 327	14.1	60.9	1 897	924	908
1975	72 071	14.2	61.3	1 919	938	921
1976	65 267	12.9	55.3	1 747	844	829
1977	61 878	12.2	52.0	1 660	807	794
1978	62 036	12.2	51.7	1 668	811	797
1979	59 464	11.6	49.0	1 602	779	766
1980	57 293	11.2	46.8	1 546	754	742
1981	53 089	10.4	42.9	1 437	703	691
1982	52 658	10.3	42.1	1 427	694	683
1983	50 822	9.9	40.3	1 377	672	662
1984	51 800	10.1	40.9	1 400	682	672
1985	53 749	10.5	42.2	1 447	708	697
1986	55 312	10.8	43.1	1 480	719	708
1987	56 221	11.0	43.5	1 496	722	711
1988	58 844	11.5	45.3	1 560	756	744
1989	61 351	12.0	47.1	1 621	789	777
1990	63 433	12.3	48.5	1 668	810	798
1991	64 358	12.5	49.0	1 683	820	808
1992	67 726	13.1	51.6	1 764	857	845
1993	67 369	13.0	51.4	1 749	850	839
1994	69 666	13.4	53.4	1 806	882	871
1995	69 771	13.3	53.8	1 807	878	867
1996	67 638	12.9	52.4	1 747	848	838
1997	67 636	12.8	52.9	1 752	852	842
1998	66 170	12.5	52.1	1 724	837	827
1999	66 232	12.5	52.5	1 735	848	838
2000	67 081	12.6	53.5	1 771	862	853
2001	65 450	12.2	52.4	1 746	853	844

Note: The average age of first time mothers was 23.7 years in 1970 and 27.7 years in 1996. The average age of all mothers was 26.7 years in 1970 and 29.7 years in 2001.

**Table 51****Average age of mothers**

	1960	1970	1980	1990	1996	1997	1998	1999	2000	2001
Average age of mother at 1st child	23.1	23.7	24.6	26.4	27.7	...	...	...	...	...
Average age of mother, total	27.0	26.7	26.8	28.5	29.3	29.4	29.5	29.6	29.7	29.7

Table 52

## Age-related fertility rates

	15-19 years	20-24 years	25-29 years	30-34 years	35-39 years	40-44 years	45-49 years
1970	32.4	130.4	130.8	66.0	24.7	5.4	0.3
1971	29.0	138.9	142.8	69.1	24.2	4.4	0.3
1972	28.1	139.2	141.7	68.6	23.8	4.2	0.2
1973	26.0	131.2	136.7	64.5	20.9	3.9	0.2
1974	25.5	133.3	133.7	62.8	20.2	3.7	0.2
1975	26.8	136.6	137.0	61.8	18.1	3.3	0.2
1976	23.1	121.1	126.0	57.8	18.0	3.2	0.1
1977	22.1	115.2	120.6	54.8	16.4	2.8	0.1
1978	20.3	113.4	125.1	55.8	16.6	2.4	0.1
1979	18.1	107.6	120.8	55.1	16.1	2.5	0.1
1980	16.8	101.7	117.9	54.6	15.7	2.4	0.1
1981	14.3	92.4	111.0	52.3	14.9	2.3	0.2
1982	12.4	87.7	112.9	54.8	15.3	2.3	0.1
1983	10.6	80.0	111.6	55.7	15.1	2.2	0.2
1984	10.1	77.5	113.3	59.2	17.4	2.3	0.1
1985	9.1	76.7	118.1	64.1	18.4	2.8	0.1
1986	9.2	75.1	120.0	68.3	20.0	3.2	0.1
1987	9.4	71.2	122.3	71.3	21.9	3.0	0.1
1988	9.1	71.3	128.1	76.7	23.4	3.2	0.2
1989	9.4	71.5	131.6	82.6	25.4	3.6	0.1
1990	9.1	71.4	134.8	86.9	27.3	3.9	0.1
1991	8.8	68.8	135.2	89.7	29.8	4.2	0.1
1992	9.5	67.9	140.6	98.4	31.8	4.5	0.2
1993	8.8	65.2	137.3	99.8	33.5	5.0	0.1
1994	8.7	63.4	141.0	106.2	36.6	5.2	0.2
1995	8.3	61.6	139.1	108.5	38.5	5.3	0.2
1996	8.0	58.9	132.6	106.1	38.2	5.6	0.2
1997	8.4	55.7	132.1	108.2	40.2	5.7	0.2
1998	7.7	53.6	128.3	108.4	40.6	5.9	0.2
1999	7.7	52.4	126.9	111.3	42.6	6.0	0.2
2000	7.8	51.7	128.3	116.7	43.0	6.7	0.2
2001	7.6	50.9	126.2	114.3	43.4	6.7	0.2

Note: The average age of first time mothers was 23.7 years in 1970 and 27.7 years in 1996. The average age of all mothers was 26.7 years in 1970 and 29.7 years in 2001.



Table 53

## Legal abortions, by age and residence of the woman 2000

	Age of woman							Total	Total abortion rate	
	15-19 years	20-24 years	25-29 years	30-34 years	35-39 years	40-44 years	45-49 years			
<b>All Denmark</b>	<b>1 954</b>	<b>3 258</b>	<b>3 430</b>	<b>3 552</b>	<b>2 521</b>	<b>882</b>	<b>84</b>	<b>15 681</b>	<b>439</b>	
Copenhagen Municipality	214	707	832	558	299	99	7	2 716	606	
Frederiksberg Municipality	18	81	97	103	62	14	1	376	508	
Copenhagen County	252	383	385	477	365	143	17	2 022	534	
Frederiksborg County	196	205	201	287	246	85	4	1 224	563	
Roskilde County	71	129	118	186	119	38	5	666	449	
West Zealand County	124	187	201	196	148	49	3	908	504	
Storstrøm County	92	135	147	150	132	44	5	705	484	
Bornholm County	7	14	16	14	9	5	1	66	298	
Funen County	153	202	223	199	160	60	6	1 003	330	
South Jutland County	82	116	89	116	93	28	3	527	345	
Ribe County	81	99	99	114	84	38	4	519	363	
Vejle County	126	166	159	192	139	34	6	822	361	
Ringkøbing County	73	94	95	132	82	23	3	502	286	
Århus County	229	367	382	407	332	112	12	1 841	405	
Viborg County	71	87	107	119	63	36	1	484	341	
North Jutland County	165	286	279	302	188	74	6	1 300	409	
	abortion rate									
Per thousands women	14.3	19.9	18.1	17.8	12.6	4.8	0.5	12.5	•	

**Table 54 (continued) Causes of death 1998**

	Under 1 years	1-4 years	5-14 years	15-34 years	35-49 years	50-59 years	60-69 years	70 years +	Total
	men								
<b>Total</b>	<b>161</b>	<b>56</b>	<b>46</b>	<b>631</b>	<b>1 620</b>	<b>2 729</b>	<b>5 046</b>	<b>18 700</b>	<b>28 989</b>
Infective and parasitic diseases (except tuberculosis)	-	3	-	6	33	20	15	69	146
Tuberculosis	1	-	-	-	2	2	9	16	30
Malignant neoplasm of bucca cavity and pharynx	-	-	-	-	29	103	120	195	447
Malignant neoplasm of stomach	-	1	-	1	9	28	57	136	232
Malignant neoplasm of intestine, except rectum	-	-	-	4	23	71	163	444	705
Malignant neoplasm of rectum and rectosigmoid junction	-	-	-	2	16	35	95	192	340
Malignant neoplasm of larynx, trachea, bronchus and lung	-	-	1	3	60	248	581	1 122	2 015
Malignant neoplasm of bone and skin	-	-	-	2	12	30	38	70	152
Malignant neoplasm of breast	-	-	-	-	-	-	1	5	6
Malignant neoplasm of cervical uteri	•	•	•	•	•	•	•	•	•
Other malignant neoplasm of uterus	•	•	•	•	•	•	•	•	•
Malignant neoplasm of prostate	-	-	-	-	4	32	144	828	1 008
Malignant neoplasm of other and unspecified sites	2	4	5	25	123	277	489	1 217	2 142
Leukaemia and other neoplasm of lymph and haematoid tissue	-	1	4	18	37	72	142	347	621
Benign neoplasm and neoplasm of unspecified nature	-	1	-	4	10	16	39	188	258
Endocrine and metabolic diseases, except diabetes mellitus	3	6	1	8	18	30	23	60	149
Diabetes mellitus	-	-	1	8	34	73	128	361	605
Anaemia and other diseases of blood and blood-forming organs	-	1	-	4	2	3	7	62	79
Mental disorders	-	1	-	8	77	85	58	386	615
Meningitis	-	-	1	1	2	1	3	10	18
Other diseases of the nervous system and sense organs	2	7	5	24	31	37	74	245	425
Active rheum. fever and chronic rheum. heart disease	-	-	-	-	-	2	3	5	10
Hypertensive disease	-	-	-	1	10	19	41	125	196
Ischamic heart disease	-	-	-	11	123	384	878	3 978	5 374
Other forms of heart disease	1	-	2	12	29	95	226	1 364	1 729
Cerebrovascular disease	-	1	-	4	61	114	268	1 640	2 088
Diseases of arteries, arterioles and capillaries	-	-	-	3	16	34	131	662	846
Other diseases of circulatory system	-	-	-	1	7	21	30	100	159
Acute respiratory infections	-	-	-	-	-	2	-	12	14
Pneumonia	1	1	-	1	15	14	28	554	614
Bronchitis, emphysema and asthma	-	-	-	1	12	54	350	1 354	1 771
Other diseases of the respiratory system	-	1	-	1	5	12	24	124	167
Diseases of oral cavity, oesophagus and stomach	-	-	-	1	6	18	39	209	273
Cirrhosis of liver, cholelithiasis	-	-	1	10	151	182	169	135	648
Other diseases of digestive system	-	-	1	8	28	65	77	338	517
Nephritis and nephrosis	-	-	-	1	1	5	9	46	62
Infections of kidney and calculus of urinary system	-	-	-	-	2	1	4	29	36
Other diseases of genito-urinary system and diseases of breast	-	-	-	-	2	5	19	240	266
Complications of pregnancy, childbirth and puerperium	•	•	•	•	•	•	•	•	•
Diseases of skin and musculo-skeletal system	-	-	-	1	7	8	31	121	168
Congenital anomalies of circulatory system	21	2	2	6	5	1	2	-	39
Other congenital anomalies	35	5	3	1	6	6	5	8	69
Certain causes of perinatal mortality	74	-	-	-	-	-	-	-	74
Senility without mention of psychosis	-	-	-	-	-	-	-	140	140
Symptoms and other ill-defined conditions	11	4	-	17	157	215	304	824	1 532
Motor vehicle accidents	-	4	10	158	60	41	25	73	371
All other accidents	1	10	4	75	117	69	60	506	842
Suicide and self-inflicted injury	-	-	2	117	166	108	57	94	544
All other effects of external causes	-	1	-	61	79	29	9	6	185
Cause of death unknown <sup>1</sup>	9	2	3	22	33	62	71	60	262

Note: From 1 January 1994 a new classification system for causes of death has been taken into use (ICD-10). Therefore, the table cannot be directly compared with corresponding tables for years prior to that year.

<sup>1</sup> Includes persons who reside in Denmark but die in a foreign country.

Table 54

## Causes of death 1998

	Under 1 years	1-4 years	5-14 years	15-34 years	35-49 years	50-59 years	60-69 years	70 years +	Total
	women								
<b>Total</b>	<b>148</b>	<b>35</b>	<b>36</b>	<b>248</b>	<b>929</b>	<b>1 771</b>	<b>3 604</b>	<b>22 693</b>	<b>29 464</b>
Infective and parasitic diseases (except tuberculosis)	1	2	-	6	8	6	16	118	157
Tuberculosis	-	-	-	-	1	-	3	13	17
Malignant neoplasm of bucca cavity and pharynx	-	-	-	1	5	31	40	113	190
Malignant neoplasm of stomach	-	-	-	2	5	11	31	132	181
Malignant neoplasm of intestine, except rectum	-	-	-	1	17	62	125	580	785
Malignant neoplasm of rectum and recto sigmoid junction	-	-	-	-	5	20	58	193	276
Malignant neoplasm or larynx, trachea, bronchus and lung	-	-	-	7	70	183	442	675	1 377
Malignant neoplasm of bone and skin	-	-	1	5	9	22	16	55	108
Malignant neoplasm of breast	-	-	-	12	124	240	274	708	1 358
Malignant neoplasm of cervical uteri	-	-	-	5	35	19	34	83	176
Other malignant neoplasm of uterus	-	-	-	-	8	28	42	134	212
Malignant neoplasm of prostate	•	•	•	•	•	•	•	•	•
Malignant neoplasm of other and unspecified sites	-	5	4	14	99	264	455	1 491	2 332
Leukaemia and other neoplasm of lymph and haematoid tissue	-	2	4	12	25	46	86	340	515
Benign neoplasm and neoplasm of unspecified nature	1	-	1	4	8	18	23	231	286
Endocrine and metabolic diseases, except diabetes mellitus	1	3	-	7	10	19	24	136	200
Diabetes mellitus	-	-	-	8	13	29	81	459	590
Anaemia and other diseases of blood and blood-forming organs	1	1	-	-	2	8	6	85	103
Mental disorders	-	-	3	4	27	34	43	761	872
Meningitis	-	1	-	1	3	-	3	16	24
Other diseases of the nervous system and sense organs	4	1	5	10	28	37	67	301	453
Active rheum. fever and chronic rheum. heart disease	-	-	-	1	-	1	3	16	21
Hypertensive disease	-	-	-	-	3	11	23	215	252
Ischamic heart disease	-	-	-	-	22	89	342	4 195	4 648
Other forms of heart disease	-	2	-	5	12	32	112	1 818	1 981
Cerebrovascular disease	-	-	-	6	49	72	189	2 591	2 907
Diseases of arteries, arterioles and capillaries	-	-	1	-	2	13	50	771	837
Other diseases of circulatory system	-	-	-	6	9	12	28	163	218
Acute respiratory infections	-	-	-	-	-	-	5	29	34
Pneumonia	2	-	-	3	9	12	26	774	826
Bronchitis, emphysema and asthma	1	1	1	-	18	86	397	1 235	1 739
Other diseases of the respiratory system	-	1	-	1	2	4	14	96	118
Diseases of oral cavity, oesophagus and stomach	-	-	-	-	4	6	40	323	373
Cirrhosis of liver, cholelithiasis	-	-	-	5	72	65	71	165	378
Other diseases of digestive system	-	-	-	1	12	28	65	510	616
Nephritis and nephrosis	-	-	-	-	1	3	5	37	46
Infections of kidney and calculus of urinary system	-	-	-	-	-	1	4	52	57
Other diseases of genito-urinary system and diseases of breast	-	-	-	1	5	6	14	180	206
Complications of pregnancy, childbirth and puerperium	-	-	-	1	1	-	-	-	2
Diseases of skin and musculo-skeletal system	-	-	-	2	8	10	29	229	278
Congenital anomalies of circulatory system	21	2	2	4	3	1	1	1	35
Other congenital anomalies	35	7	1	5	5	7	6	10	76
Certain causes of perinatal mortality	65	-	-	-	-	-	-	-	65
Senility without mention of psychosis	-	-	-	-	-	-	-	427	427
Symptoms and other ill-defined conditions	9	2	-	8	40	88	181	1 178	1 506
Motor vehicle accidents	-	2	6	39	21	17	15	41	141
All other accidents	2	1	1	13	28	31	39	888	1 003
Suicide and self-inflicted injury	-	-	-	25	49	57	37	48	216
All other effects of external causes	-	2	4	13	36	27	10	12	104
Cause of death unknown <sup>1</sup>	5	-	2	10	16	15	29	65	142

<sup>1</sup> Includes persons reside in Denmark but die in a foreign country.

**Table 55****Deaths by sex and age 2001**

	Men	Women	Total
<b>Total</b>	<b>28 404</b>	<b>29 934</b>	<b>58 338</b>
0- 4 years	198	193	391
5- 9 years	30	21	51
10-14 years	33	18	51
15-19 years	80	27	107
20-24 years	111	39	150
25-29 years	155	56	211
30-34 years	196	90	286
35-39 years	336	182	518
40-44 years	431	275	706
45-49 years	741	458	1 199
50-54 years	1 150	741	1 891
55-59 years	1 776	1 151	2 927
60-64 years	1 914	1 311	3 225
65-69 years	2 660	2 009	4 669
70-74 years	3 595	2 791	6 386
75-79 years	4 632	4 123	8 755
80-84 years	4 669	5 087	9 756
85-89 years	3 522	5 531	9 053
90-94 years	1 726	4 174	5 900
95 years +	449	1 657	2 106

**Table 56** Average life expectancy according to life tables

	1906- 1910	1966- 1970	1976- 1980	1986- 1990	1996- 2000	1906- 1910	1966- 1970	1976- 1980	1986- 1990	1996- 2000
	men					women				
0 years	54.9	70.6	71.2	71.9	73.8	57.9	75.4	77.2	77.7	78.7
5 years	59.4	67.2	67.2	67.7	69.3	61.1	71.6	73.0	73.3	74.1
10 years	55.1	62.3	62.3	62.7	64.4	56.7	66.7	68.0	68.4	69.2
20 years	46.3	52.7	52.6	53.0	54.6	48.2	56.9	58.2	58.5	59.3
30 years	38.0	43.2	43.2	43.5	45.0	40.1	47.2	48.5	48.8	49.5
40 years	29.7	33.8	33.8	34.2	35.6	32.0	37.6	38.9	39.1	39.8
50 years	22.1	24.8	24.9	25.3	26.6	22.1	28.5	29.8	30.0	30.5
60 years	15.2	16.9	17.1	17.5	18.4	15.2	20.0	21.4	21.7	21.9
70 years	9.3	10.6	10.8	11.1	11.6	9.3	12.5	13.8	14.3	14.5
80 years	5.1	6.0	6.3	6.4	6.6	5.1	6.8	7.7	8.1	8.4
90 years	2.6	3.1	3.3	3.5	3.4	2.6	3.4	3.8	4.0	4.1

Note: The table illustrates the number of years which a person of a given age can expect to live, assuming that mortality rates remain constant.

Table 57

## Life tables 2000-2001

	Survivors	Death rate for age group <sup>1</sup>	Average life expectancy <sup>2</sup>	Survivors	Death rate for age group <sup>1</sup>	Average life expectancy <sup>2</sup>	Survivors	Death rate for age group <sup>1</sup>	Average life expectancy <sup>2</sup>	Survivors	Death rate for age group <sup>1</sup>	Average life expectancy <sup>2</sup>	
	men			women			men			women			
0 years	100 000	554	74.53	100 000	401	79.20	50 years	93 836	513	27.19	96 395	333	30.88
1 years	99 446	31	73.95	99 599	48	78.51	51 years	93 354	549	26.32	96 074	366	29.98
2 years	99 415	25	72.97	99 551	27	77.55	52 years	92 841	563	25.47	95 723	390	29.09
3 years	99 391	21	71.99	99 525	14	76.57	53 years	92 318	601	24.61	95 350	416	28.20
4 years	99 370	17	71.00	99 510	13	75.58	54 years	91 764	666	23.75	94 953	456	27.32
5 years	99 353	17	70.01	99 497	10	74.59	55 years	91 153	802	22.91	94 520	500	26.44
6 years	99 336	17	69.02	99 487	7	73.60	56 years	90 422	885	22.09	94 048	572	25.57
7 years	99 319	13	68.04	99 481	8	72.60	57 years	89 622	942	21.28	93 509	645	24.72
8 years	99 306	11	67.05	99 473	9	71.61	58 years	88 778	1 074	20.48	92 906	705	23.87
9 years	99 296	14	66.05	99 464	14	70.62	59 years	87 824	1 159	19.70	92 251	746	23.04
10 years	99 282	14	65.06	99 450	14	69.63	60 years	86 807	1 229	18.92	91 563	772	22.21
11 years	99 268	14	64.07	99 436	10	68.64	61 years	85 740	1 309	18.15	90 856	859	21.38
12 years	99 254	17	63.08	99 427	11	67.64	62 years	84 617	1 424	17.39	90 075	1 029	20.56
13 years	99 237	20	62.09	99 416	11	66.65	63 years	83 413	1 632	16.63	89 148	1 163	19.77
14 years	99 217	24	61.10	99 405	16	65.66	64 years	82 052	1 779	15.90	88 112	1 254	19.00
15 years	99 193	35	60.12	99 389	22	64.67	65 years	80 592	1 949	15.18	87 007	1 413	18.23
16 years	99 158	55	59.14	99 367	20	63.68	66 years	79 021	2 238	14.47	85 778	1 609	17.48
17 years	99 104	66	58.17	99 346	25	62.70	67 years	77 253	2 532	13.79	84 398	1 730	16.76
18 years	99 038	70	57.21	99 322	31	61.71	68 years	75 297	2 860	13.13	82 937	1 891	16.05
19 years	98 969	72	56.25	99 291	28	60.73	69 years	73 143	3 157	12.51	81 369	2 076	15.35
20 years	98 898	92	55.29	99 263	25	59.75	70 years	70 834	3 371	11.90	79 680	2 263	14.66
21 years	98 807	92	54.34	99 237	23	58.76	71 years	68 446	3 717	11.30	77 877	2 455	13.99
22 years	98 716	75	53.39	99 214	22	57.78	72 years	65 902	4 105	10.71	75 966	2 651	13.33
23 years	98 641	76	52.43	99 192	26	56.79	73 years	63 197	4 473	10.15	73 952	2 914	12.68
24 years	98 566	70	51.47	99 166	27	55.80	74 years	60 370	4 875	9.60	71 797	3 172	12.04
25 years	98 497	68	50.50	99 139	28	54.82	75 years	57 427	5 242	9.07	69 520	3 445	11.42
26 years	98 430	76	49.54	99 112	35	53.83	76 years	54 417	5 860	8.54	67 125	3 829	10.81
27 years	98 355	83	48.58	99 077	37	52.85	77 years	51 228	6 625	8.04	64 555	4 220	10.22
28 years	98 274	84	47.62	99 040	35	51.87	78 years	47 834	7 474	7.58	61 831	4 588	9.65
29 years	98 191	89	46.65	99 005	35	50.89	79 years	44 259	8 223	7.15	58 994	5 015	9.09
30 years	98 103	88	45.70	98 971	35	49.91	80 years	40 619	8 760	6.75	56 036	5 434	8.54
31 years	98 017	83	44.74	98 935	42	48.92	81 years	37 061	9 464	6.34	52 991	6 061	8.01
32 years	97 936	90	43.77	98 894	49	47.95	82 years	33 554	10 338	5.96	49 779	6 800	7.49
33 years	97 847	107	42.81	98 845	51	46.97	83 years	30 085	11 279	5.58	46 394	7 575	7.00
34 years	97 742	117	41.86	98 794	55	45.99	84 years	26 692	12 351	5.23	42 879	8 254	6.53
35 years	97 627	123	40.91	98 740	63	45.02	85 years	23 395	13 270	4.90	39 340	9 212	6.08
36 years	97 507	134	39.96	98 678	74	44.05	86 years	20 290	14 565	4.57	35 716	10 501	5.64
37 years	97 377	153	39.01	98 605	82	43.08	87 years	17 335	16 071	4.26	31 965	11 491	5.25
38 years	97 228	166	38.07	98 524	97	42.11	88 years	14 549	17 148	3.99	28 292	12 688	4.86
39 years	97 067	184	37.13	98 429	109	41.15	89 years	12 054	18 543	3.71	24 703	14 309	4.50
40 years	96 888	210	36.20	98 322	118	40.20	90 years	9 819	20 580	3.44	21 168	15 681	4.16
41 years	96 684	211	35.27	98 205	126	39.24	91 years	7 798	22 956	3.20	17 849	17 561	3.85
42 years	96 480	236	34.35	98 081	134	38.29	92 years	6 008	24 373	3.00	14 714	19 489	3.56
43 years	96 252	262	33.43	97 950	156	37.34	93 years	4 544	25 883	2.81	11 847	21 623	3.30
44 years	96 001	277	32.51	97 797	174	36.40	94 years	3 368	28 088	2.61	9 285	23 567	3.07
45 years	95 735	321	31.60	97 626	202	35.46	95 years	2 422	29 209	2.44	7 097	25 036	2.87
46 years	95 427	368	30.70	97 429	223	34.53	96 years	1 714	31 698	2.24	5 320	28 030	2.66
47 years	95 076	413	29.81	97 212	252	33.61	97 years	1 171	36 287	2.05	3 829	29 660	2.50
48 years	94 683	439	28.94	96 967	287	32.69	98 years	746	39 394	1.93	2 693	30 757	2.34
49 years	94 267	457	28.06	96 689	304	31.79	99 years	452	41 837	1.86	1 865	33 622	2.15

<sup>1</sup> The figures indicate (per 100,000) the frequency of deaths within a year, from one birthday to the next. <sup>2</sup> The average life time that is achieved by a number of contemporaries who die according to the mortality table.

Table 58

## Occupational mortality 1991-1995

	Population aged 20-64 years 1/1-1991	Deaths	Mortality index	Population aged 20-64 years 1/1-1991	Deaths	Mortality index
	men			women		
<b>Economically active persons, total</b>	<b>1 366 481</b>	<b>26 058</b>	<b>100</b>	<b>1 209 943</b>	<b>12 647</b>	<b>100</b>
Self-employed in agriculture, etc.	64 449	1 554	74	5 828	97	103
Of whom: Agriculture	53 971	1 324	71	4 259	82	114
Fishing	3 446	102	126	...	...	...
Self-employed in manufacturing	31 942	740	94	4 358	55	102
Of whom: Carpenters and joiners	5 164	97	82	..	...	...
Manufacture of machinery	2 778	74	106	...	...	...
Self-employed in wholesale, retail trade, services	89 845	2 331	108	38 113	541	114
Of whom: General practitioners	2 446	50	73	...	...	...
Hotels and restaurants	5 245	177	159	4 229	76	144
Assisting spouses	...	...	...	37 901	596	79
Of whom: Agriculture etc.	...	...	...	18 276	259	65
Hotels and restaurants	...	...	...	1 117	17	110
Salaried employees at upper levels	178 745	3 057	75	53 679	528	100
Of whom: Teachers at instit. of higher education	17 697	287	61	7 514	83	87
Pilot, captain, navigator	3 954	91	92	...	...	...
Salaried employees at managerial levels	175 872	3 581	92	187 866	1 644	88
Of whom: Teachers	38 705	589	74	48 276	453	81
Supervisors, foremen	22 444	621	101	3 034	50	133
Other salaried employees	212 376	3 380	106	472 294	4 389	99
Of whom: Bank clerks, etc.	5 950	32	65	18 916	112	78
Nurses, assistant nurses, etc.	10 531	255	149	77 026	693	96
Skilled manual workers	266 315	4 249	101	26 185	178	109
Of whom: Manufacture of wood products	9 978	155	71	...	...	...
Hotels and restaurants	8 554	180	181	8 412	80	158
Unskilled manual workers	285 355	6 190	125	321 223	3 808	109
Of whom: Agriculture and horticulture	17 189	333	83	3 079	21	84
Hotels and restaurants	3 522	77	182	91 527	1 243	108
Employees not further specified	50 111	647	187	57 268	708	105

Note. The table includes persons aged 20-64 on 1.1.1991. Mortality was observed in the period 1.1.1991 up to and including 31.12.1995. The mortality index measures mortality in an occupation in relation to the total number of men and women in the occupation. Calculations take account of the differences in age distribution between occupations.

Table 59

## Immigration and emigration, by citizenship and country moved to/from 2001

	Danish nationals			Nationals of the foreign country moved to/from			Total		
	Immigration	Emigration	Net migration	Immigration	Emigration	Net migration	Immigration	Emigration	Net migration
<b>Total</b>	<b>22 330</b>	<b>26 688</b>	<b>- 4 358</b>	<b>26 099</b>	<b>13 616</b>	<b>12 483</b>	<b>55 984</b>	<b>43 980</b>	<b>12 004</b>
Of which: EU countries	9 226	12 110	- 2 884	6 525	4 916	1 609	17 588	18 049	- 461
Europe <sup>1</sup>	15 716	19 005	- 3 289	15 264	9 748	5 516	33 607	30 105	3 502
Of which: Belgium	447	384	63	116	76	40	602	492	110
Estonia	17	18	- 1	228	171	57	257	194	63
Finland	46	62	- 16	331	290	41	405	376	29
France	803	1 130	- 327	576	521	55	1 486	1 730	- 244
Faeroe Islands	958	1 304	- 346	-	-	-	971	1 317	- 346
Greece	180	181	- 1	101	79	22	310	265	45
Greenland	2 656	2 291	365	-	-	-	2 688	2 329	359
Netherlands	380	438	- 58	462	268	194	925	762	163
Ireland	257	255	2	92	60	32	380	335	45
Iceland	160	73	87	1 139	492	647	1 318	568	750
Italy	369	420	- 51	563	375	188	991	841	150
Yugoslavia, Fed. Rep.	13	22	- 9	244	9	235	280	45	235
Latvia	32	36	- 4	438	292	146	482	344	138
Lithuania	47	41	6	817	519	298	884	569	315
Norway	1 558	1 907	- 349	1 624	1 252	372	3 294	3 232	62
Poland	133	144	- 11	710	380	330	887	533	354
Romania	12	16	- 4	232	80	152	271	97	174
Russia	77	56	21	526	139	387	726	217	509
Switzerland	422	504	- 82	89	53	36	568	608	- 40
Spain	824	1 171	- 347	598	368	230	1 486	1 619	- 133
United Kingdom	2 778	3 393	- 615	949	721	228	3 913	4 359	- 446
Sweden	1 071	2 399	- 1 328	1 143	1 038	105	2 389	3 660	- 1 271
Turkey	134	77	57	1 025	266	759	1 328	350	978
Germany	1 674	1 842	- 168	1 383	962	421	3 989	2 983	1 006
Ukraine	8	8	-	416	123	293	451	134	317
Austria	169	147	22	112	89	23	358	252	106
Africa	960	877	83	1 613	874	739	3 101	1 864	1 237
Of which: Ethiopia	36	31	5	57	8	49	322	60	262
Somalia	22	36	- 14	448	481	- 33	471	519	- 48
North America	2 174	2 654	- 480	1 554	1 292	262	3 928	4 237	- 309
Of which: Canada	196	260	- 64	223	134	89	446	440	6
United States	1 978	2 394	- 416	1 331	1 158	173	3 482	3 797	- 315
South and Central America	530	431	99	740	264	476	1 320	731	589
Of which: Brazil	95	100	- 5	170	82	88	284	197	87
Asia	1 849	1 930	- 81	6 577	1 193	5 384	10 234	3 386	6 848
Of which: Afghanistan	4	3	1	956	16	940	961	20	941
Philippines	84	55	29	217	22	195	308	83	225
India	92	92	-	353	76	277	467	189	278
Iraq	11	9	2	1 391	78	1 313	1 415	91	1 324
Iran	42	79	- 37	333	78	255	704	169	535
Israel	173	97	76	101	42	59	289	148	141
Japan	95	70	25	234	201	33	336	275	61
Jordan	15	19	- 4	48	8	40	333	30	303
China	177	213	- 36	837	169	668	1 049	402	647
Lebanon	162	132	30	141	52	89	423	218	205
Pakistan	166	113	53	416	125	291	1 209	270	939
Syria	35	49	- 14	44	5	39	310	75	235
Thailand	192	185	7	734	116	618	955	309	646
Viet Nam	37	76	- 39	283	43	240	323	124	199
Oceania	659	851	- 192	330	233	97	1 063	1 159	- 96
Of which: Australia	492	651	- 159	270	177	93	817	885	- 68
Not known	442	940	- 498	21	12	9	2 731	2 498	233

Note: Incl. Migration to and from the Faeroe Islands and Greenland. For practical reasons, Greenland is grouped under Europe and not North America.

<sup>1</sup> Incl. Cyprus.



**Table 60****Residence permits granted in Denmark**

	1991	1992	1993	1994	1995	1996	1997	1998	1999	2000	2001
<b>Total</b>	<b>21 652</b>	<b>21 397</b>	<b>17 613</b>	<b>20 268</b>	<b>37 879</b>	<b>32 332</b>	<b>29 505</b>	<b>31 034</b>	<b>29 260</b>	<b>34 881</b>	<b>38 592</b>
In asylum cases	4 014	3 807	3 424	2 818	20 347	8 717	5 925	4 758	4 458	5 156	6 264
Refugee status	3 505	3 683	3 246	2 508	19 931	6 387	4 940	4 442	4 238	4 388	5 742
Of which:											
Geneva Convention status	985	757	645	676	4 969	1 439	976	1 102	1 105	1 327	2 020
De facto-status	1 472	1 901	1 909	1 317	14 393	4 375	3 409	2 862	2 584	2 541	3 116
Quota refugee	860	553	495	425	528	508	501	444	516	464	531
Other status	509	124	178	310	416	2 330	985	316	220	768	522
Of which:											
Humanitarian residence permit	435	70	49	96	115	76	17	42	39	31	83
Family unification	8 517	8 091	5 033	6 017	6 327	8 727	7 708	9 687	9 422	12 571	13 187
Spouses or cohabitants	5 874	5 215	3 570	4 436	4 580	6 112	5 665	6 442	6 637	6 399	6 499
Minor children	2 120	2 214	1 257	1 425	1 631	2 429	1 843	3 004	2 585	5 934	6 422
Parents over the age 60	523	662	206	156	116	186	200	241	200	238	266
EC/EEA residence permits	1 670	2 280	2 825	4 342	3 780	5 887	5 919	6 101	5 706	5 925	5 950
Other residence permits	7 451	7 219	6 331	7 091	7 425	9 001	9 953	10 488	9 674	11 229	13 191
Closely connected relatives	445	481	599	653	446	597	586	633	783	708	642
Employment reasons	2 395	2 439	2 058	2 124	2 232	2 750	3 062	3 256	3 074	3 620	5 132
Other reasons (including education)	4 611	4 299	3 674	4 314	4 747	5 654	6 305	6 599	5 817	6 901	7 417

Note: Convention refugees must meet all conditions listed in the UN Refugee Convention regarding when a person is a refugee. De facto refugees do not meet the conditions listed in the UN Refugee Convention, however they can be granted asylum in accordance with Danish regulations regarding "other or exceptional reasons". Quota refugees are invited to Denmark via an agreement with the UNHCR.

Source: The Danish Immigration Service.

**Table 61** Internal migration, by sex and age 2001

	Migration from one municipality to another			Migration within a municipality			Total internal migration		
	Men	Women	Total	Men	Women	Total	Men	Women	Total
<b>Total</b>	<b>164 279</b>	<b>155 410</b>	<b>319 689</b>	<b>271 083</b>	<b>257 382</b>	<b>528 465</b>	<b>435 362</b>	<b>412 792</b>	<b>848 154</b>
0- 4 years	10 858	10 437	21 295	19 847	19 025	38 872	30 705	29 462	60 167
5- 9 years	6 740	6 170	12 910	15 840	15 178	31 018	22 580	21 348	43 928
10-14 years	5 228	5 021	10 249	11 726	11 434	23 160	16 954	16 455	33 409
15-19 years	12 245	17 353	29 598	17 282	22 271	39 553	29 527	39 624	69 151
20-24 years	35 869	39 481	75 350	47 066	49 480	96 546	82 935	88 961	171 896
25-29 years	29 629	26 255	55 884	42 630	36 016	78 646	72 259	62 271	134 530
30-34 years	20 217	14 718	34 935	30 763	23 399	54 162	50 980	38 117	89 097
35-39 years	13 561	8 965	22 526	24 157	17 972	42 129	37 718	26 937	64 655
40-44 years	8 141	6 248	14 389	15 995	12 080	28 075	24 136	18 328	42 464
45-49 years	6 091	5 344	11 435	11 359	8 998	20 357	17 450	14 342	31 792
50-54 years	5 228	4 815	10 043	8 492	7 112	15 604	13 720	11 927	25 647
55-59 years	4 013	3 791	7 804	6 273	5 798	12 071	10 286	9 589	19 875
60-64 years	2 691	2 426	5 117	4 422	4 657	9 079	7 113	7 083	14 196
65-69 years	1 671	1 523	3 194	3 627	4 184	7 811	5 298	5 707	11 005
70-74 years	980	944	1 924	3 085	4 100	7 185	4 065	5 044	9 109
75-79 years	582	743	1 325	3 040	4 513	7 553	3 622	5 256	8 878
80-84 years	303	581	884	2 654	4 440	7 094	2 957	5 021	7 978
85-89 years	177	354	531	1 910	4 044	5 954	2 087	4 398	6 485
90-94 years	45	197	242	768	2 142	2 910	813	2 339	3 152
95 years +	10	44	54	147	539	686	157	583	740

**Table 62**
**Marriages contracted, by age of both spouses 2001**

	Age of bridegroom								Total	Average age of bride
	Under 20 years	20-29 years	30-39 years	40-49 years	50-59 years	60-69 years	70 years +	Not stated		
Age of bride										
<b>Total</b>	<b>234</b>	<b>11 152</b>	<b>14 432</b>	<b>5 534</b>	<b>2 973</b>	<b>859</b>	<b>249</b>	<b>1 134</b>	<b>36 567</b>	<b>33.4</b>
Under 20 years	135	510	78	8	3	1	-	96	831	18.7
20-29 years	76	8 849	5 488	383	62	8	1	531	15 398	26.4
30-39 years	2	1 450	7 581	2 220	328	32	2	325	11 940	34.2
40-49 years	1	65	756	2 250	1 118	115	8	112	4 425	44.4
50-59 years	-	7	45	371	1 153	354	38	58	2 026	54.1
60-69 years	-	-	3	16	141	275	96	8	539	63.6
70 years +	-	-	-	2	5	23	95	4	129	75.5
Not stated	20	271	481	284	163	51	9	-	1 279	•
Average age of bridegroom	19.0	27.1	34.3	44.4	54.5	63.8	75.6	•	36.2	•

Note. The average age at first marriage was in 2001 32.8 years for men and 30.3 years for women.

Table 63

## The most common names for children born in 2000

boys			girls						
	Number	Per thousands boys born	Ranking in 1999		Number	Per thousands girls born	Ranking in 1999		
1	Mathias	1 101	32	(1)	1	Julie	960	29	(2)
2	Mads	1 034	30	(2)	2	Sofie	941	29	(4)
3	Mikkel	992	29	(8)	3	Sara	898	27	(3)
4	Rasmus	948	27	(4)	4	Cecilie	874	27	(5)
5	Emil	928	27	(7)	5	Emma	866	26	(1)
6	Oliver	905	26	(5)	6	Caroline	794	24	(6)
7	Frederik	897	26	(6)	7	Laura	779	24	(7)
8	Christian	894	26	(3)	8	Mathilde	698	21	(15)
9	Nicolai	886	26	(13)	9	Katrine	670	20	(8)
10	Jonas	833	24	(9)	10	Anna	635	19	(13)
11	Jacob	826	24	(12)	11	Emilie	627	19	(9)
12	Kasper	792	23	(10)	12	Ida	568	17	(14)
13	Magnus	789	23	(15)	13	Freja	538	16	(16)
14	Andreas	760	22	(11)	14	Maria	527	16	(12)
15	Tobias	687	20	(16)	15	Amalie	522	16	(11)
16	Simon	664	19	(14)	16	Camilla	473	14	(10)
17	Lucas	651	19	(17)	17	Louise	439	13	(17)
18	Marcus	598	17	(21)	18	Signe	429	13	(23)
19	Victor	593	17	(23)	19	Maja	421	13	(19)
20	Nicklas	561	16	(20)	20	Josefine	420	13	(18)

Table 64

## The most common names in Denmark 2002

Per 1 January	Number Per thousands men		Number Per thousands women		
	— boys' names —		— girls' names —		
1 Jens	58 508	22	1 Kirsten	50 766	19
2 Peter	52 676	20	2 Anne	48 797	18
3 Lars	48 353	18	3 Hanne	42 817	16
4 Hans	48 070	18	4 Anna	40 441	15
5 Niels	47 230	18	5 Mette	39 717	15
6 Michael	46 337	17	6 Karen	36 715	14
7 Jørgen	46 108	17	7 Helle	35 439	13
8 Søren	44 769	17	8 Inge	33 161	12
9 Henrik	44 610	17	9 Susanne	32 998	12
10 Thomas	41 701	16	10 Inger	32 764	12
11 Jan	41 400	16	11 Lene	32 441	12
12 Erik	40 178	15	12 Else	31 976	12
13 Ole	38 077	14	13 Marianne	28 400	10
14 Martin	36 818	14	14 Bente	27 618	10
15 Poul	36 744	14	15 Lone	26 843	10
16 Per	36 351	14	16 Maria	25 288	9
17 Christian	35 235	13	17 Jette	25 247	9
18 Anders	34 939	13	18 Pia	25 098	9
19 Morten	34 741	13	19 Birthe	24 524	9
20 Jesper	34 541	13	20 Charlotte	24 008	9

Table 65

## The most common used surnames in Denmark 2002

Per 1 January	Number in 2002	Per thousands	Number in 2001	Per thousands		Number in 2002	Per thousands	Number in 2001	Per thousands
1 Jensen	309 161	58	312 396	58	26 Frederiksen	21 661	4	21 791	4
2 Nielsen	301 804	56	304 509	57	27 Laursen	19 016	4	19 044	4
3 Hansen	253 524	47	255 892	48	28 Henriksen	18 721	3	18 776	4
4 Pedersen	189 662	35	191 144	36	29 Lund	16 811	3	16 747	3
5 Andersen	174 684	33	175 607	33	30 Schmidt	15 893	3	15 923	3
6 Christensen	135 087	25	135 979	25	31 Eriksen	15 609	3	15 693	3
7 Larsen	131 398	24	132 441	25	32 Holm	15 029	3	15 029	3
8 Sørensen	126 081	23	127 078	24	33 Kristiansen	14 461	3	14 489	3
9 Rasmussen	105 515	20	106 249	20	34 Clausen	13 615	3	13 653	3
10 Jørgensen	99 669	19	100 376	19	35 Simonsen	13 071	2	13 110	2
11 Petersen	94 290	18	95 232	18	36 Svendsen	12 450	2	12 529	2
12 Madsen	71 066	13	71 448	13	37 Andreasen	12 262	2	12 305	2
13 Kristensen	65 484	12	65 680	12	38 Iversen	11 167	2	11 209	2
14 Olsen	54 978	10	55 461	10	39 Jeppesen	10 348	2	10 376	2
15 Christiansen	40 745	8	41 005	8	40 Mogensen	9 650	2	9 651	2
16 Thomsen	40 708	8	40 796	8	41 Østergaard	9 498	2	9 423	2
17 Poulsen	34 588	6	34 731	6	42 Lauridsen	9 491	2	9 511	2
18 Johansen	33 329	6	33 500	6	43 Nissen	9 370	2	9 398	2
19 Knudsen	32 378	6	32 567	6	44 Jespersen	9 319	2	9 318	2
20 Mortensen	31 624	6	31 846	6	45 Jepsen	8 846	2	8 870	2
21 Møller	30 990	6	31 024	6	46 Frandsen	8 789	2	8 781	2
22 Jakobsen	28 878	5	28 820	5	47 Vestergaard	8 211	2	8 182	2
23 Jacobsen	26 537	5	26 852	5	48 Kjær	8 186	2	8 154	2
24 Olesen	23 978	4	24 043	4	49 Nørgaard	7 774	1	7 702	1
25 Mikkelsen	23 165	4	23 250	4	50 Jessen	7 643	1	7 657	1

**Table 66****Divorces by age of both spouses 2001**

Age of wife	age of husband								Total
	18-19 years	20-29 years	30-39 years	40-49 years	50-59 years	60-69 years	70 years +	Not stated	
<b>Total</b>	<b>3</b>	<b>1 271</b>	<b>5 301</b>	<b>4 541</b>	<b>2 481</b>	<b>606</b>	<b>133</b>	<b>261</b>	<b>14 597</b>
15-19 years	1	14	4	-	-	-	-	11	30
20-29 years	1	918	1 080	138	34	4	4	82	2 261
30-39 years	1	268	3 631	1 576	218	21	6	99	5 820
40-49 years	-	38	447	2 530	1 031	89	11	45	4 191
50-59 years	-	11	59	245	1 112	278	22	20	1 747
60-69 years	-	2	3	7	68	192	56	4	332
70 years +	-	-	1	1	1	12	34	-	49
Not stated	-	20	76	44	17	10	-	-	167

**Table 67****Divorces by duration of marriage**

	1999	2000	2001
<b>Total</b>	<b>13 537</b>	<b>14 394</b>	<b>14 597</b>
Under 1 year	265	294	264
1 year	595	688	726
2 years	869	861	901
3 years	1 044	1 150	1 108
4 years	1 125	1 149	1 182
5 years	922	1 001	1 020
6-7 years	1 528	1 679	1 689
8-9 years	1 252	1 353	1 376
10-14 years	2 220	2 460	2 506
15-19 years	1 295	1 355	1 429
20-24 years	1 004	1 031	965
25 years +	1 415	1 369	1 431
Not stated	3	4	-



**Table 68**                      **Households by size 2002**

Per 1 January	Single man with/without children	Single woman with/without children	Married couple with/without children	Unmarried couple with/without children	Child below 18 not living with parents	Total	Other households total	Total number of households
	households comprising only one family							
<b>Total</b>	<b>423 400</b>	<b>590 903</b>	<b>854 099</b>	<b>281 035</b>	<b>1 007</b>	<b>2 150 444</b>	<b>305 662</b>	<b>2 456 106</b>
1 person	410 413	502 469	•	•	•	913 889	•	913 889
2 persons	9 747	48 251	508 060	171 877	•	737 935	78 330	816 265
3 persons	2 742	30 901	103 852	54 826	•	192 321	111 223	303 544
4 persons	424	7 367	173 551	42 762	•	224 104	65 098	289 202
5 persons	59	1 483	55 893	9 625	•	67 060	29 762	96 822
6 persons +	15	432	12 743	1 945	•	15 135	21 249	36 384

**Table 69**

**Families by size 2002**

Per 1 January	Single persons <sup>1</sup>	Married couples	Other couples	Total	Single persons	Married couples	Other couples	Total	Total number of families
	families without children				families with children				
<b>Total</b>	<b>1 443 208</b>	<b>610 164</b>	<b>175 844</b>	<b>2 212 722</b>	<b>123 079</b>	<b>416 611</b>	<b>118 423</b>	<b>658 113</b>	<b>2 887 329</b>
1 person	1 443 208	•	•	1 426 714	•	•	•	•	1 443 208
2 persons	•	610 164	175 844	786 008	73 835	•	•	73 835	859 843
3 persons	•	•	•	•	38 254	146 467	60 310	245 031	245 031
4 persons	•	•	•	•	8 735	193 780	45 658	248 173	248 173
5 persons	•	•	•	•	1 726	61 834	10 335	73 895	73 895
6 persons +	•	•	•	•	529	14 530	2 120	17 179	17 179

<sup>1</sup> Incl. children under 18 years not living at home.

**Table 70****Adoptions by type and by age of child 2001**

	Adoptions of female spouse's child	Adoptions of male spouse's child	Adoptions of reg. partner's child	Total	Child born in Denmark	Child born outside Denmark	Total	Adoptions total
	family adoptions				non-family adoptions			
<b>Total</b>	<b>515</b>	<b>37</b>	<b>46</b>	<b>598</b>	<b>47</b>	<b>646</b>	<b>693</b>	<b>1 291</b>
Boys	231	23	19	273	20	259	279	552
Girls	284	14	27	325	27	387	414	739
<b>Age of child</b>								
Under 1 year	13	1	36	50	25	166	191	241
1- 4 years	26	3	6	35	4	435	439	474
5- 9 years	85	5	3	93	2	27	29	122
10-14 years	75	4	-	79	-	12	12	91
15-19 years	96	5	1	102	6	3	9	111
20 years +	220	19	-	239	10	3	13	252

Note: Family adoptions are where one spouse adopts the other spouse's child.

Table 71

## Conscripts by height

	1896-1900 Average	2000		2001	
		Spring	Autumn	Spring	Autumn
<b>Conscripts, total</b>	<b>18 039</b>	<b>12 700</b>	<b>13 271</b>	<b>12 282</b>	<b>12 567</b>
159 cm and under	1 298	28	28	20	20
160-164 cm	3 729	115	134	119	130
165-169 cm	6 138	560	581	547	502
170-174 cm	4 614	1 888	1 834	1 659	1 790
175-179 cm	1 841	3 431	3 457	3 227	3 329
180-184 cm	375	3 482	3 773	3 565	3 603
185-189 cm	40	2 212	2 318	2 126	2 160
190-194 cm	4	746	911	772	825
195-199 cm		202	194	207	176
200 cm +		36	41	40	32
Average height in cm	168.4	180.5	180.7	180.7	180.6

Note. The average height for the period 1852–1856 was 165.4 cm.

Source: Ministry of the Interior.

**Table 72****Population projections for Denmark. Changes**

	2002	2005	2010	2015	2020	2025	2030	2035	2039
Live births	63 922	62 540	59 858	60 625	64 561	67 157	66 701	64 844	63 757
Deaths	58 857	58 541	58 687	59 609	61 211	63 452	65 788	67 532	68 066
Net migration	12 732	13 740	13 603	12 267	10 390	8 560	6 732	5 982	5 265
Population growth	17 797	17 739	14 774	13 283	13 740	12 265	7 645	3 294	956
Percentage population growth	0.33	0.33	0.27	0.24	0.24	0.21	0.13	0.06	0.02

Note. The projection is based on the following assumptions: Total fertility rate will increase from 1.7 child per woman in 2002. Fertility will gradually increase to 1.9 child per woman in 2040. Mortality is based on the life table for 1999-2000 with a life expectancy for men and women of 74.34 years and 78.98 years respectively. Life expectancy will gradually increase until 2039 ending at 80 years for men and 83 years for women. Net annual immigration will decrease to 5,300 in 2030.

Table 73

## Population projections in five-year age groups

	2002		2010		2020		2030		2040	
	Men	Women	Men	Women	Men	Women	Men	Women	Men	Women
<b>Total</b>	<b>2 654 146</b>	<b>2 714 208</b>	<b>2 726 316</b>	<b>2 779 141</b>	<b>2 795 848</b>	<b>2 846 416</b>	<b>2 852 404</b>	<b>2 910 069</b>	<b>2 872 417</b>	<b>2 929 505</b>
0- 4 years	171 822	163 685	158 653	151 159	160 619	153 043	173 236	165 009	165 920	158 059
5- 9 years	180 265	170 988	170 023	162 242	158 329	150 887	172 949	164 747	172 991	164 767
10-14 years	163 577	154 866	181 049	171 498	165 816	157 665	167 441	159 207	179 121	170 260
15-19 years	144 359	138 193	182 008	172 508	177 424	168 728	166 023	157 664	179 824	170 622
20-24 years	159 458	156 508	161 308	157 105	187 988	181 243	173 365	168 475	174 559	169 424
25-29 years	190 137	187 100	153 758	153 940	188 179	183 801	183 145	179 533	172 481	169 330
30-34 years	199 239	191 660	178 592	176 552	169 064	166 711	190 422	185 722	176 405	172 984
35-39 years	217 524	208 431	196 465	193 951	160 167	160 714	189 139	186 148	183 121	180 642
40-44 years	192 088	186 029	210 282	204 459	179 987	179 789	169 758	169 211	188 536	185 917
45-49 years	186 444	182 285	201 778	196 697	193 338	193 139	158 320	160 295	184 845	183 782
50-54 years	189 430	186 827	183 557	180 666	202 416	200 296	173 910	176 064	163 829	165 392
55-59 years	190 974	188 164	175 099	175 271	190 585	189 930	183 185	186 192	150 508	154 631
60-64 years	134 979	138 738	184 026	185 914	168 435	170 518	186 315	188 847	160 986	166 234
65-69 years	106 702	117 121	144 039	150 373	152 107	158 733	167 334	172 785	162 512	169 754
70-74 years	87 180	104 248	99 040	111 634	145 901	158 095	136 898	146 732	153 998	163 397
75-79 years	67 995	94 756	68 233	87 982	100 013	117 685	109 616	126 256	124 703	139 494
80-84 years	43 393	74 200	44 933	69 603	55 043	75 748	86 371	110 577	86 176	105 763
85-89 years	20 789	45 609	23 894	49 140	26 975	46 683	44 712	66 708	53 528	74 742
90-94 years	6 673	19 850	7 854	21 348	10 604	23 603	15 724	28 679	28 513	45 413
95 years and over	1 118	4 950	1 725	7 099	2 858	9 405	4 541	11 218	9 861	18 898

Note. The projection is based on the following assumptions: Total fertility rate will increase from 1.7 child per woman in 2002. Fertility will gradually increase to 1.9 child per woman in 2040. Mortality is based on the life table for 1999-2000 with a life expectancy for men and women of 74.34 years and 78.98 years respectively. Life expectancy will gradually increase until 2039 ending at 80 years for men and 83 years for women. Net annual immigration will decrease to 5,300 in 2030.

**Table 74****Population projections, by country of origin**

	2002	2005	2010	2015	2020	2025	2030	2035	2040
<b>Total</b>	<b>5 368 354</b>	<b>5 422 414</b>	<b>5 505 457</b>	<b>5 574 953</b>	<b>5 642 264</b>	<b>5 709 486</b>	<b>5 762 473</b>	<b>5 791 713</b>	<b>5 801 922</b>
From more developed countries:									
Immigrants	155 001	163 730	178 943	194 223	208 480	220 617	230 051	237 234	243 290
Descendants	23 516	25 918	30 617	35 841	41 181	46 355	51 151	55 483	59 429
From less developed countries:									
Immigrants	166 793	199 613	255 209	309 588	361 035	407 997	448 961	483 421	512 310
Descendants	70 021	84 502	109 787	135 579	161 105	185 702	209 435	232 404	254 741
Rest of the population	4 953 023	4 948 651	4 930 901	4 899 722	4 870 463	4 848 815	4 822 875	4 783 171	4 732 152

The forecast is based on the following conditions. The total fertility rate: For immigrant women and descendant women from more developed countries: An increase to 1.82 children pr. woman in 2030. For immigrant women from less developed countries: A decrease to 1.90 children pr. woman in 2030. For descendant women from less developed countries: A decrease to 2.10 children pr. woman in 2030. For women from the rest of the population: An increase to 1.82 children pr. woman in 2030. After 2030 the fertility rates is constant. Deaths: The life expectancy is expected to increase to 80 years for men and 83 years for women in 2039. Immigration: Immigrants from more and less developed countries: An increase to 21.000 persons pr. year in 2030. Constant thereafter. Descendants: No immigration. The rest of the population: Constant at 20.946 persons pr. year in the whole period. Emigration: For all groups: An increase of 0.5 per cent yearly until 2030. Constant thereafter.

**Table 75**

**Elections to the Folketing**

	11 March 1998			20 November 2001		
	Denmark	The Faroe Islands	Greenland	Denmark	The Faroe Islands	Greenland
The electorate	3 993 099	31 509	37 856	3 998 957	33 106	38 710
Votes cast	3 431 926	20 842	24 305	3 484 915	26 498	23 819
Invalid votes	25 929	146	512	35 247	105	559
Valid votes	3 405 997	20 696	23 793	3 449 668	26 393	23 260
of which personal	1 635 871	18 992	23 149	1 605 006	23 608	22 930
Votes cast as percentage of electors	86.0	66.1	64.2	87.1	80.0	61.5
Invalid votes as percentage of votes cast	0.76	0.70	2.11	1.01	0.40	2.35
Personal votes as percentage of valid votes cast	48.0	91.8	97.3	46.5	89.4	98.6
Candidates	1 127	60	14	984	92	13
of whom women	311	12	3	289	21	4
Elected	175	2	2	175	2	2
of whom women	66	-	1	67	1	-

Note. The Faroe Islands and Greenland each represent a constituency. The electoral turnout is the number of votes cast as a percentage of the total electorate. The percentage of invalid votes is the blank and other invalid votes as a percentage of the total votes cast. The percentage of personal votes is the personal votes as a percentage of the valid votes.

Source: Ministry of the Interior.



Table 76

Elected members of the Folketing, by sex and constituency  
20 November 2001

	Total	A	B	C	D	F	O	Q	V	Z	Ø	Inde- pendent
<b>All Denmark</b>	<b>175</b>	<b>52</b>	<b>9</b>	<b>16</b>	-	<b>12</b>	<b>22</b>	<b>4</b>	<b>56</b>	-	<b>4</b>	-
<b>Of whom women</b>	<b>67</b>	<b>18</b>	<b>4</b>	<b>8</b>	-	<b>4</b>	<b>9</b>	<b>2</b>	<b>20</b>	-	<b>2</b>	-
<b>Central Copenhagen</b>	<b>18</b>	<b>6</b>	<b>2</b>	<b>2</b>	-	<b>2</b>	<b>2</b>	-	<b>3</b>	-	<b>1</b>	-
<b>Of whom women</b>	<b>10</b>	<b>4</b>	-	<b>1</b>	-	<b>1</b>	<b>1</b>	-	<b>2</b>	-	<b>1</b>	-
Søndre Constituency	4	2	-	-	-	1	-	-	1	-	-	-
Of whom women	1	1	-	-	-	-	-	-	-	-	-	-
Østre Constituency	8	2	1	1	-	1	1	-	1	-	1	-
Of whom women	5	1	-	1	-	1	-	-	1	-	1	-
Vestre Constituency	6	2	1	1	-	-	1	-	1	-	-	-
Of whom women	4	2	-	-	-	-	1	-	1	-	-	-
<b>The Islands</b>	<b>73</b>	<b>22</b>	<b>4</b>	<b>8</b>	-	<b>5</b>	<b>9</b>	<b>1</b>	<b>22</b>	-	<b>2</b>	-
<b>Of whom women</b>	<b>31</b>	<b>9</b>	<b>1</b>	<b>4</b>	-	<b>2</b>	<b>5</b>	<b>1</b>	<b>8</b>	-	<b>1</b>	-
Copenhagen	19	5	1	2	-	1	3	1	5	-	1	-
Of whom women	10	2	-	2	-	-	2	1	3	-	-	-
Frederiksborg	11	3	1	1	-	1	1	-	4	-	-	-
Of whom women	5	1	1	-	-	1	1	-	1	-	-	-
Roskilde	7	2	-	1	-	-	1	-	3	-	-	-
Of whom women	4	1	-	1	-	-	1	-	1	-	-	-
West Zealand	10	3	1	1	-	1	1	-	3	-	-	-
Of whom women	3	1	-	-	-	-	-	-	2	-	-	-
Storstrøm	8	3	-	1	-	1	1	-	2	-	-	-
Of whom women	3	2	-	-	-	-	1	-	-	-	-	-
Bornholm	2	1	-	-	-	-	-	-	1	-	-	-
Of whom women	-	-	-	-	-	-	-	-	-	-	-	-
Funen	16	5	1	2	-	1	2	-	4	-	1	-
Of whom women	6	2	-	1	-	1	-	-	1	-	1	-
<b>Jutland</b>	<b>84</b>	<b>24</b>	<b>3</b>	<b>6</b>	-	<b>5</b>	<b>11</b>	<b>3</b>	<b>31</b>	-	<b>1</b>	-
<b>Of whom women</b>	<b>26</b>	<b>5</b>	<b>3</b>	<b>3</b>	-	<b>1</b>	<b>3</b>	<b>1</b>	<b>10</b>	-	-	-
South Jutland	9	3	-	1	-	-	1	-	4	-	-	-
Of whom women	2	1	-	-	-	-	-	-	1	-	-	-
Ribe	6	2	-	-	-	-	1	-	3	-	-	-
Of whom women	1	-	-	-	-	-	-	-	1	-	-	-
Vejle	12	3	1	1	-	1	2	-	4	-	-	-
Of whom women	6	2	1	-	-	-	1	-	2	-	-	-
Ringkøbing	10	2	-	1	-	1	1	1	4	-	-	-
Of whom women	2	-	-	-	-	-	-	1	1	-	-	-
Århus	23	7	1	1	-	2	3	1	7	-	1	-
Of whom women	5	1	1	1	-	-	1	-	1	-	-	-
Viborg	7	2	-	1	-	-	1	-	3	-	-	-
Of whom women	3	1	-	1	-	-	-	-	1	-	-	-
North Jutland	17	5	1	1	-	1	2	1	6	-	-	-
Of whom women	7	-	1	1	-	1	1	-	3	-	-	-

NOTE: A: Social Democratic Party. B: Social Liberal Party. C: Conservative People's Party. D: Centre Democratic Party. F: Socialist People's Party. O: Danish People's Party. Q: Christian People's Party. V: Liberal Party. Z: Progress Party. Ø: Unity List.

Source: Ministry of the Interior.

**Table 77** (continued) **The election to the Folketing 20 November 2001**

	Electoral turnout	Relative distribution of votes										
		A	B	C	D	F	O	Q	V	Z	Ø	Independent
<b>All Denmark</b>	<b>87.15</b>	<b>29.1</b>	<b>5.2</b>	<b>9.1</b>	<b>1.8</b>	<b>6.4</b>	<b>12.0</b>	<b>2.3</b>	<b>31.2</b>	<b>0.5</b>	<b>2.4</b>	<b>0.0</b>
<b>Copenhagen-Frederiksberg</b>	<b>83.01</b>	<b>27.6</b>	<b>10.7</b>	<b>8.6</b>	<b>2.4</b>	<b>11.8</b>	<b>10.5</b>	<b>1.6</b>	<b>19.8</b>	<b>0.3</b>	<b>6.6</b>	<b>0.1</b>
<b>Søndre Large Constituency</b>	<b>81.31</b>	<b>28.0</b>	<b>10.5</b>	<b>6.9</b>	<b>2.5</b>	<b>12.8</b>	<b>10.4</b>	<b>1.5</b>	<b>19.7</b>	<b>0.4</b>	<b>7.2</b>	<b>0.1</b>
Christianshavn	82.69	29.7	10.2	6.0	2.3	14.0	10.0	1.4	17.5	0.5	8.3	0.1
Rådhus	80.19	20.1	14.9	10.3	3.3	11.9	5.9	1.4	24.7	0.3	7.2	0.0
Sundby	79.85	33.1	6.2	6.2	1.8	11.0	14.8	1.7	19.5	0.5	5.1	0.1
Blågård	84.48	25.4	14.4	6.4	2.8	15.2	6.5	1.6	16.0	0.3	11.4	0.0
Amagerbro	80.49	30.1	8.4	5.7	2.4	12.7	13.1	1.6	19.9	0.4	5.6	0.1
<b>Østre Large Constituency</b>	<b>82.74</b>	<b>27.8</b>	<b>11.3</b>	<b>7.2</b>	<b>2.4</b>	<b>12.0</b>	<b>11.0</b>	<b>1.7</b>	<b>19.8</b>	<b>0.3</b>	<b>6.3</b>	<b>0.2</b>
Ryvang	82.12	28.0	11.0	7.5	2.5	11.3	10.6	1.9	21.0	0.2	5.8	0.2
Østbane	84.77	20.9	16.2	9.3	2.7	12.9	6.0	2.0	23.0	0.3	6.5	0.2
Husum	82.58	33.9	7.4	6.0	1.7	11.2	16.2	1.4	16.3	0.4	5.4	0.1
Østerbro	86.30	22.8	13.8	8.9	2.7	11.1	7.1	2.0	25.0	0.3	6.1	0.2
Nørrebro	80.28	25.7	15.3	6.1	3.0	15.0	8.1	1.3	15.8	0.3	9.3	0.1
Bispeeng	82.06	28.5	12.0	5.9	2.6	13.1	10.9	1.5	17.1	0.3	8.0	0.1
Bispebjerg	77.51	31.5	8.6	6.6	2.1	10.7	13.9	2.0	18.7	0.3	5.4	0.2
Brønshøj	85.52	28.3	9.1	7.9	2.1	11.5	12.4	1.8	21.4	0.4	4.9	0.2
<b>Vestre Large Constituency</b>	<b>84.77</b>	<b>27.0</b>	<b>10.2</b>	<b>11.6</b>	<b>2.4</b>	<b>10.8</b>	<b>9.9</b>	<b>1.5</b>	<b>19.9</b>	<b>0.3</b>	<b>6.4</b>	<b>0.0</b>
Valby	82.36	33.0	6.5	6.9	2.0	11.6	14.0	1.6	18.7	0.4	5.3	0.0
Vesterbro	83.40	26.0	15.7	5.6	2.7	15.8	6.7	1.1	14.6	0.3	11.5	0.0
Enghave	81.34	32.0	8.2	5.7	2.0	12.4	13.1	1.4	16.1	0.5	8.6	0.0
Gl. Kongevej	88.41	21.9	12.6	17.6	2.5	8.8	6.8	1.4	23.1	0.3	5.0	0.0
Slots	86.26	24.8	9.3	16.6	2.4	8.5	9.4	1.8	22.5	0.3	4.4	0.0
Falkoner	87.78	23.2	10.9	15.9	3.0	8.8	8.1	1.6	23.3	0.3	4.9	0.0
<b>The Islands</b>	<b>87.97</b>	<b>29.1</b>	<b>4.9</b>	<b>10.5</b>	<b>1.9</b>	<b>6.6</b>	<b>12.7</b>	<b>1.6</b>	<b>30.0</b>	<b>0.5</b>	<b>2.2</b>	<b>0.0</b>
<b>Copenhagen County Constituency</b>	<b>88.53</b>	<b>29.0</b>	<b>5.5</b>	<b>9.5</b>	<b>2.4</b>	<b>6.9</b>	<b>13.6</b>	<b>1.5</b>	<b>28.6</b>	<b>0.3</b>	<b>2.7</b>	<b>0.0</b>
Gentofte	88.59	16.5	8.5	17.4	3.4	6.0	8.6	2.0	35.0	0.2	2.4	0.0
Lyngby	90.29	18.8	8.4	14.0	3.0	5.9	8.3	1.8	37.4	0.3	2.1	0.0
Ballerup	90.78	30.6	5.4	8.5	2.4	7.1	13.6	1.6	28.2	0.2	2.4	0.0
Glostrup	87.77	32.3	3.8	7.7	2.0	7.0	15.9	1.2	27.0	0.3	2.8	0.0
Hellerup	89.71	12.5	9.1	19.3	3.3	4.9	6.9	1.7	39.8	0.2	2.3	0.0
Gladsaxe	88.01	30.3	6.2	7.8	3.1	8.9	13.3	1.7	24.5	0.3	3.9	0.0
Hvidovre	86.49	35.9	3.9	5.9	1.8	7.4	17.5	1.2	23.0	0.3	3.1	0.0
Amager	88.66	33.1	3.8	7.2	1.8	6.2	16.7	1.2	27.7	0.3	2.0	0.0
Rødovre	87.34	36.8	4.2	6.9	1.9	7.9	15.3	1.8	22.2	0.3	2.7	0.0
<b>Frederiksborg County Constituency</b>	<b>89.09</b>	<b>24.4</b>	<b>6.3</b>	<b>9.7</b>	<b>2.2</b>	<b>6.5</b>	<b>11.2</b>	<b>2.0</b>	<b>35.2</b>	<b>0.4</b>	<b>2.1</b>	<b>0.0</b>
Helsingør	86.05	29.5	6.3	11.7	2.1	7.1	12.1	1.4	27.0	0.4	2.4	0.0
Fredensborg	89.73	19.3	7.7	11.6	2.2	5.8	10.2	2.1	38.8	0.4	1.9	0.0
Hillerød	90.76	23.4	6.3	9.1	2.4	7.1	10.1	2.2	36.9	0.3	2.2	0.0
Frederiksværk	88.29	28.6	4.5	6.8	2.0	6.4	13.3	1.8	34.0	0.5	2.1	0.0
<b>Roskilde County Constituency</b>	<b>89.89</b>	<b>27.6</b>	<b>4.5</b>	<b>8.5</b>	<b>1.8</b>	<b>5.7</b>	<b>13.2</b>	<b>1.5</b>	<b>34.8</b>	<b>0.4</b>	<b>2.0</b>	<b>0.0</b>
Roskilde	89.43	28.3	5.9	8.7	1.9	8.0	10.9	1.8	31.2	0.3	3.0	0.0
Køge	89.31	27.6	3.5	8.8	1.7	4.7	14.8	1.3	35.8	0.4	1.4	0.0
Lejre	91.91	26.8	4.8	7.5	1.9	5.2	12.4	1.8	37.4	0.3	1.9	0.0

Note. Electoral turnout is a percentage of the total electorate.

Source: Ministry of the Interior.

**Table 77 (continued) The election to the Folketing 20 November 2001**

	Electoral turnout	Relative distribution of votes										
		A	B	C	D	F	O	Q	V	Z	Ø	Independent
<b>West Zealand County</b>												
<b>Constituency</b>	<b>86.81</b>	<b>29.0</b>	<b>4.5</b>	<b>10.1</b>	<b>1.5</b>	<b>6.8</b>	<b>14.0</b>	<b>1.6</b>	<b>30.1</b>	<b>0.5</b>	<b>1.7</b>	<b>0.2</b>
Holbæk	87.35	28.6	6.3	13.3	1.6	6.7	11.1	1.7	27.9	0.5	2.2	0.1
Nykøbing Sjælland	86.48	28.6	4.3	9.9	1.6	7.2	14.0	1.5	30.0	0.6	2.2	0.1
Kalundborg	86.98	29.7	3.7	9.7	1.2	6.6	15.0	1.4	30.5	0.6	1.3	0.3
Ringsted	87.52	28.3	4.0	8.4	1.8	7.0	13.7	2.0	32.7	0.5	1.5	0.1
Sorø	87.96	27.4	4.9	9.6	1.4	6.6	13.3	1.9	32.1	0.6	1.9	0.3
Slagelse	84.92	31.0	3.3	9.4	1.3	6.5	16.9	1.2	28.0	0.5	1.5	0.4
<b>Storstrøm County</b>												
<b>Constituency</b>	<b>87.45</b>	<b>33.0</b>	<b>3.4</b>	<b>9.9</b>	<b>1.4</b>	<b>6.7</b>	<b>12.7</b>	<b>1.4</b>	<b>29.0</b>	<b>0.6</b>	<b>1.9</b>	<b>0.0</b>
Præstø	88.32	27.7	3.6	9.3	1.6	6.0	12.6	1.4	35.1	0.7	2.0	0.0
Næstved	87.63	33.5	3.5	13.6	1.5	6.0	11.1	1.8	26.9	0.4	1.7	0.0
Vordingborg	87.85	31.5	3.6	9.7	1.4	8.0	11.7	1.3	29.7	0.7	2.4	0.0
Nakskov	85.33	39.5	2.7	7.1	0.8	8.0	15.8	0.9	22.7	0.8	1.7	0.0
Maribo	87.15	34.7	3.1	7.9	1.2	6.3	13.0	1.3	29.5	0.8	2.2	0.0
Nykøbing Falster	87.61	33.5	3.7	9.2	1.3	6.5	13.6	1.5	28.5	0.5	1.7	0.0
<b>Bornholm County</b>												
<b>Constituency</b>	<b>86.07</b>	<b>38.1</b>	<b>2.0</b>	<b>3.5</b>	<b>1.0</b>	<b>4.5</b>	<b>9.6</b>	<b>3.9</b>	<b>34.6</b>	<b>0.7</b>	<b>2.1</b>	<b>0.0</b>
Rønne	85.22	42.5	1.8	3.6	1.1	4.3	9.9	3.7	30.7	0.6	1.8	0.0
Åkirkeby	86.86	34.1	2.1	3.4	1.0	4.7	9.4	4.0	38.2	0.8	2.3	0.0
<b>Funen County</b>												
<b>Constituency</b>	<b>86.68</b>	<b>30.8</b>	<b>4.7</b>	<b>14.8</b>	<b>1.5</b>	<b>6.5</b>	<b>11.9</b>	<b>1.5</b>	<b>25.7</b>	<b>0.5</b>	<b>2.1</b>	<b>0.0</b>
Odense Øst	81.01	37.0	5.0	14.4	1.6	8.2	11.2	1.4	17.6	0.5	3.1	0.0
Odense Vest	86.06	34.2	4.3	18.8	1.6	6.8	11.6	1.4	18.6	0.4	2.3	0.0
Odense Syd	86.67	27.7	5.5	20.8	1.6	6.9	10.0	1.7	23.3	0.3	2.2	0.0
Kerteminde	90.00	31.6	4.2	14.4	1.3	5.7	12.6	1.3	26.6	0.7	1.6	0.0
Middelfart	88.28	31.1	5.2	11.8	1.3	4.9	12.6	1.6	29.5	0.5	1.5	0.0
Otterup	88.96	29.2	3.5	15.8	1.2	4.6	13.3	1.5	29.0	0.7	1.2	0.0
Nyborg	87.45	29.6	4.2	11.1	1.3	6.9	12.3	1.4	30.2	0.7	2.3	0.0
Svendborg	86.79	29.8	5.3	10.7	1.4	8.0	12.5	1.3	27.9	0.5	2.6	0.0
Fåborg	87.52	26.9	4.2	14.0	2.1	5.7	12.0	1.5	31.2	0.6	1.8	0.0
<b>Jutland</b>												
<b>Constituency</b>	<b>87.39</b>	<b>29.4</b>	<b>4.2</b>	<b>7.8</b>	<b>1.5</b>	<b>5.0</b>	<b>11.7</b>	<b>3.1</b>	<b>35.0</b>	<b>0.7</b>	<b>1.6</b>	<b>0.0</b>
<b>South Jutland County</b>												
<b>Constituency</b>	<b>87.47</b>	<b>27.4</b>	<b>3.4</b>	<b>7.6</b>	<b>1.3</b>	<b>3.7</b>	<b>14.0</b>	<b>2.5</b>	<b>38.2</b>	<b>1.0</b>	<b>0.9</b>	<b>0.0</b>
Haderslev	87.26	27.2	3.7	9.2	1.3	4.8	13.3	3.2	35.4	0.8	1.1	0.0
Åbenrå	87.76	28.6	3.7	7.2	1.4	3.7	14.6	2.2	36.8	0.8	1.0	0.0
Sønderborg	86.97	31.0	4.0	8.1	1.2	3.8	15.9	1.9	32.3	0.8	1.0	0.0
Augustenborg	89.13	31.1	3.2	7.1	1.2	3.7	14.9	1.7	35.3	1.0	0.8	0.0
Tønder	86.16	26.6	3.1	7.6	1.4	3.8	11.2	2.2	41.9	1.0	1.2	0.0
Løgumkloster	86.48	21.3	3.0	7.1	1.3	2.5	14.0	4.0	44.4	1.8	0.6	0.0
Rødding	88.59	25.2	2.4	6.2	1.1	3.3	12.9	2.7	44.7	0.8	0.7	0.0
<b>Ribe County Constituency</b>												
<b>Constituency</b>	<b>87.17</b>	<b>29.0</b>	<b>2.8</b>	<b>5.7</b>	<b>1.1</b>	<b>3.9</b>	<b>12.0</b>	<b>2.5</b>	<b>41.4</b>	<b>0.6</b>	<b>1.0</b>	<b>0.0</b>
Varde	88.61	22.6	3.1	6.6	1.1	3.0	12.0	3.4	46.9	0.7	0.6	0.0
Esbjerg	85.67	35.6	2.4	5.1	1.1	4.9	12.8	1.8	34.2	0.6	1.5	0.0
Ribe	88.16	24.6	3.4	5.5	1.2	4.6	10.5	2.4	46.0	0.6	1.2	0.0
Grindsted	87.71	26.8	2.7	5.9	1.2	2.4	12.1	2.8	44.8	0.7	0.6	0.0
<b>Vejle County</b>												
<b>Constituency</b>	<b>87.47</b>	<b>27.5</b>	<b>4.0</b>	<b>7.9</b>	<b>1.5</b>	<b>5.9</b>	<b>13.7</b>	<b>2.8</b>	<b>34.7</b>	<b>0.6</b>	<b>1.3</b>	<b>0.1</b>
Fredericia	86.14	33.0	3.3	7.8	1.3	5.8	14.1	2.7	30.2	0.6	1.2	0.0
Kolding	86.58	25.8	4.7	7.8	1.4	8.3	12.8	2.6	35.1	0.4	1.1	0.0
Vejle	87.34	28.5	4.6	8.8	1.9	6.5	13.4	2.9	31.5	0.5	1.4	0.0
Give	88.48	19.7	3.7	7.1	1.4	4.1	15.8	3.7	42.7	0.8	1.0	0.0
Juelsminde	89.77	23.7	3.5	7.1	1.3	3.9	14.1	4.3	40.5	0.6	0.9	0.1
Horsens	87.59	31.4	4.0	8.3	1.5	5.4	13.1	1.7	31.9	0.7	1.9	0.1

**Table 77** (continued) **The election to the Folketing 20 November 2001**

	Electoral turnout	Relative distribution of votes										
		A	B	C	D	F	O	Q	V	Z	Ø	Independent
<b>Ringkøbing County</b>												
<b>Constituency</b>	<b>88.57</b>	<b>24.2</b>	<b>3.4</b>	<b>6.1</b>	<b>1.2</b>	<b>4.1</b>	<b>11.4</b>	<b>6.2</b>	<b>42.0</b>	<b>0.7</b>	<b>0.7</b>	<b>0.0</b>
Ringkøbing	87.99	21.3	3.5	5.7	1.3	5.5	11.1	5.7	44.6	0.6	0.7	0.0
Holstebro	88.77	27.0	3.9	6.6	1.2	4.9	10.9	4.7	39.3	0.7	0.8	0.0
Herning	88.67	26.0	3.4	6.1	1.4	3.1	12.2	5.3	41.4	0.5	0.6	0.0
Skjern	88.82	20.4	2.5	5.9	1.0	2.5	11.5	10.6	44.2	0.9	0.5	0.0
<b>Århus County</b>												
<b>Constituency</b>	<b>88.02</b>	<b>31.8</b>	<b>5.4</b>	<b>7.9</b>	<b>1.9</b>	<b>6.3</b>	<b>10.4</b>	<b>2.5</b>	<b>30.6</b>	<b>0.5</b>	<b>2.6</b>	<b>0.1</b>
Århus Øst	88.38	29.1	9.2	9.1	2.5	8.6	7.0	2.5	27.5	0.3	4.1	0.1
Århus Nord	87.20	35.7	7.4	6.7	2.3	8.4	9.0	2.6	23.8	0.4	3.7	0.0
Århus Syd	89.04	31.5	6.7	8.6	2.2	7.1	8.6	2.2	29.7	0.4	3.0	0.0
Århus Vest	87.24	35.1	5.4	7.1	1.9	7.2	11.4	2.6	25.3	0.5	3.5	0.0
Mariager	88.87	31.3	3.2	6.8	1.2	3.5	12.9	2.7	36.3	0.7	1.3	0.1
Randers	85.05	37.4	3.7	8.1	1.3	4.9	13.1	2.6	26.5	0.6	1.8	0.0
Hammel	90.57	29.3	4.4	8.0	1.8	4.7	11.7	2.3	35.5	0.5	1.7	0.1
Grenå	86.20	31.3	3.4	7.1	1.4	4.9	12.8	2.2	34.2	0.8	1.8	0.1
Skanderborg	88.82	30.1	4.3	8.2	1.7	5.7	9.6	1.9	35.9	0.5	2.0	0.1
Silkeborg	89.06	27.8	4.6	8.5	1.8	6.0	10.1	3.2	35.0	0.6	2.4	0.0
<b>Viborg County</b>												
<b>Constituency</b>	<b>87.70</b>	<b>29.6</b>	<b>3.9</b>	<b>7.3</b>	<b>1.2</b>	<b>3.8</b>	<b>11.4</b>	<b>3.1</b>	<b>37.1</b>	<b>1.5</b>	<b>1.1</b>	<b>0.0</b>
Thisted	86.82	28.8	3.1	8.7	1.1	4.2	11.8	4.4	34.6	1.9	1.4	0.0
Morsø	86.82	34.3	3.1	5.8	1.1	3.5	10.1	2.5	32.7	5.9	1.0	0.0
Skive	88.03	31.1	5.5	7.7	1.1	4.5	12.4	2.2	33.7	0.9	0.9	0.0
Viborg	87.89	28.4	3.8	7.1	1.4	3.9	10.0	2.7	40.8	0.7	1.2	0.0
Kjellerup	88.45	27.5	3.5	6.3	1.3	2.7	12.4	3.6	41.1	0.8	0.8	0.0
<b>North Jutland</b>												
<b>Constituency</b>	<b>85.80</b>	<b>31.5</b>	<b>4.2</b>	<b>9.9</b>	<b>1.8</b>	<b>4.6</b>	<b>11.0</b>	<b>2.7</b>	<b>31.7</b>	<b>0.6</b>	<b>2.0</b>	<b>0.0</b>
Frederikshavn	84.16	32.9	2.9	11.4	1.7	4.1	13.5	2.8	28.5	0.6	1.6	0.0
Sæby	86.60	29.7	3.5	12.3	1.4	4.0	10.6	3.4	32.7	1.0	1.4	0.0
Hjørring	85.50	29.2	4.3	13.9	2.4	3.8	10.1	3.3	30.9	0.5	1.6	0.0
Fjerritslev	85.73	29.5	4.5	9.9	1.4	3.6	11.0	3.3	34.4	0.7	1.7	0.0
Ålborg Nord	87.08	35.4	3.7	8.6	1.5	4.7	11.8	2.6	29.1	0.6	2.0	0.0
Ålborg Vest	84.62	28.9	5.9	10.6	2.3	6.9	10.2	2.3	29.5	0.4	3.0	0.0
Ålborg Øst	84.59	35.1	5.6	8.3	2.1	6.6	11.0	2.4	25.5	0.4	3.0	0.0
Hobro	87.22	34.9	3.6	7.0	1.3	3.5	10.4	1.9	35.0	0.6	1.8	0.0
Års	86.83	25.6	3.9	8.1	1.5	3.5	10.3	2.6	42.3	0.6	1.6	0.0

Table 78

## Elections to the Folketing. Distribution of votes and candidates

	11 March 1998					20 November 2001			
	Valid votes cast		Candi- dates	Of whom elected	Valid votes cast		Candi- dates	Of whom elected	
	Number	Per cent			Number	Per cent			
<b>Denmark</b>	<b>3 405 997</b>	<b>100.0</b>	<b>1 127</b>	<b>175</b>	<b>3 449 668</b>	<b>100.0</b>	<b>984</b>	<b>175</b>	
Social Democratic Party	1 223 620	35.9	105	63	1 003 323	29.1	105	52	
Social Liberal Party	131 254	3.9	98	7	179 023	5.2	98	9	
Conservative People's Party	303 965	8.9	102	16	312 770	9.1	102	16	
Centre Democratic Party	146 802	4.3	98	8	61 031	1.8	90	-	
Socialist People's Party	257 406	7.6	103	13	219 842	6.4	103	12	
Danish People's Party	252 429	7.4	89	13	413 987	12.0	101	22	
Christian People's Party	85 656	2.5	95	4	78 793	2.3	84	4	
Democratic Renewal	10 768	0.3	112	-	•	•	•	•	
Liberal Party	817 894	24.0	98	42	1 077 858	31.2	96	56	
Progress Party	82 437	2.4	106	4	19 340	0.6	99	-	
Unity List	91 933	2.7	109	5	82 685	2.4	101	4	
Independent candidates	1 833	0.1	12	-	1 016	0.0	5	-	
<b>The Faroe Islands</b>	<b>20 696</b>	<b>100.0</b>	<b>60</b>	<b>2</b>	<b>26 393</b>	<b>100.0</b>	<b>92</b>	<b>2</b>	
Conservative People's Party	5 569	26.9	12	1	5 417	20.5	17	-	
Liberal Unionist Party	4 510	21.8	18	-	7 208	27.3	26	1	
Social Democratic Party	4 689	22.7	16	1	6 187	23.4	19	-	
Social Liberal Autonom Party	1 603	7.7	3	-	434	1.6	3	-	
Republican Party	4 325	20.9	11	-	6 578	24.9	20	1	
Centre Party	•	•	•	•	569	2.2	7	-	
<b>Greenland</b>	<b>23 793</b>	<b>100.0</b>	<b>14</b>	<b>2</b>	<b>23 260</b>	<b>100.0</b>	<b>13</b>	<b>2</b>	
Center Party	101	0.4	1	-	•	•	•	•	
Unionist Party	8 569	36.0	4	1	5 138	22.1	3	-	
Independence Party	5 138	21.6	3	-	7 172	30.8	3	1	
Progressive Party	8 646	36.3	3	1	6 033	25.9	3	1	
Independent candidates	1 339	5.6	3	-	4 917	21.1	4	-	

Source: Ministry of the Interior.

Table 79

## Referendums

	Total electorate	Votes cast		Percentage voting	Per cent of valid votes		Per cent of electorate		
		Total	Invalid		For	Against	For	Against	
<b>Constitutional amendments</b>									
6/9 1920	1 291 745	640 759	6 940	49.6	96.9	3.1	47.5	1.5	
23/5 1939	2 173 420	1 063 764	11 770	48.9	91.9	8.1	44.5	3.9	
28/5 1953	2 585 800	1 527 658	25 231	59.1	78.8	21.2	45.8	12.3	
<b>Voting age</b>									
28/5 1953: 25 to 23 or 21 years	2 815 100	1 608 625	67 688	57.1	54.6 <sup>1</sup>	45.4 <sup>1</sup>	29.9 <sup>1</sup>	24.9 <sup>1</sup>	
30/5 1961: 23 to 21 years	2 880 337	1 074 558	9 299	37.3	55.0	45.0	20.3	16.6	
24/6 1969: 21 to 18 years	3 309 551	2 103 854	8 443	63.6	21.4	78.6	13.5	49.8	
21/9 1971: 21 to 20 years	3 378 087	2 911 749	78 201	86.2	56.5	43.5	47.4	36.5	
19/9 1978: 20 to 18 years	3 615 158	2 283 276	8 984	63.2	53.8	46.2	33.8	29.1	
<b>Other issues</b>									
25/6 1963: Acquisition of farms	} 3 043 170 {	2 222 264	23 920	} 73.0 {	38.4	61.6	27.7	44.5	
Act on small farm-holdings		2 222 123	25 687		38.6	61.4	27.9	44.3	
Municipal right of pre-emption		2 222 238	22 160		39.6	60.4	28.6	43.7	
Nature conservation		2 222 195	23 391		42.6	57.4	30.8	41.5	
2/10 1972: Danish accession to the EEC	3 453 763	3 113 122	19 316	90.1	63.3	36.7	56.7	32.9	
2/6 1992: Denmark's accession to the European Union Treaty	3 962 005	3 290 610	30 879	83.1	49.3	50.7	40.5	41.7	
18/5 1993: Denmark's accession to the Edinburgh Agreement and the Maastricht Treaty	3 974 672	3 436 940	34 635	86.5	56.7	43.3	48.6	37.0	
28/5 1998: Danish accession to the Amsterdam Treaty	3 996 333	3 046 781	56 494	76.2	55.1	44.9	41.2	33.6	
<b>Consultative referendums 1916-86</b>									
14/12 1916: Sale of West Indian Islands	1 200 000	449 094	7 267	37.4	64.2	35.8	23.6	13.2	
27/2 1986: Danish accession to the EEC reform package	3 883 429	2 927 652	29 383	75.4	56.2	43.8	41.9	32.7	
<b>Specification of referendum on 28/9 2000:</b>									
<b>Single EU currency</b>									
All Denmark	3 999 325	3 503 525	40 358	87.6	46.8	53.2	40.5	46.1	
Copenhagen and Frederiksberg	446 155	376 291	5 874	84.3	45.7	54.3	37.9	45.1	
The Islands	1 707 985	1 510 086	15 576	88.4	46.4	53.6	40.6	46.9	
Jutland	1 845 185	1 617 148	18 908	87.6	47.4	52.6	41.0	45.6	

Note. For an *amendment to the constitution*: Referendums on the Constitution, which include the Faroes, are held according to section 93 of the Constitution of 5 June 1915 - section 94 as amended on 10 Sept. 1920. If a proposal is to be adopted it requires a majority of votes for, and at least 45 per cent of the electorate. In the 1939 referendum, the proposal was rejected. In the Constitution from 5 June 1953, the above majority was reduced to 40 pct. (section 88), Greenland became part of the Realm and women received the right to inherit the throne.

Note. For *voting age*: The voting age for the Folketing was reduced in the Constitution of 5 June 1915 from 30 to 25, but after with a transitional provision of 29 years for the next election (22 April 1918), and after this 1 year for every 4 years. The amendment to the constitution in 1920 cancelled this gradual reduction in the voting age. The 1953 referendum on reduction of the voting age to 23 or 21 was carried out in accordance with Act no. 50 of 25 March 1953 and held at the same time as the Constitution referendum; columns 6 and 7 for this line should read 'for 23 years' and 'for 21 years' respectively. For the referendum on voting age, 21-24 year-olds had voting rights and the referendum included the Faroe Islands. The following 4 referendums, which included the Faroe Islands and Greenland, were held in accordance with section 29 of the Constitution of 5 June 1953: the voting age can be changed by an Act, but a Bill adopted by the Folketing must be subjected to a referendum according to section 42 (5). Under section 42(5) if there is a 'yes' or 'no' to the Bill, the majority of 'no' votes must represent at least 30 pct. of the total electorate. In the 1969 referendum, the Bill was rejected.

Note. For *other issues*: Referendums are held according to the Constitution of 6 June 1953, the 1963 referendum in accordance with section 42(1) and 1972 and 1992 referendums in accordance with section 20. According to section 42(1), when a Bill has been adopted by the Folketing (and it is not exceptions-listed) one-third of the members of the Folketing within a time limit of three days, may request that the Bill be sent to a referendum. If the Bill is accepted, it is sent to referendum under section 42(5). According to section 20, authority which according to the Constitution belongs to the realm, may be left to international authorities if the Bill is adopted by five-sixths of the members of the Folketing. If the Bill has only a simple majority, it may be sent for approval or rejection by the electorate under section 42(5) (c.f. note to b). In the 1963 referendum, which only covered Denmark, all 4 Bills were rejected. In the 1972 referendum, which included the Faroe Islands and Greenland, the Bill was approved. In the 1992 referendum, which did not include the Faroe Islands and Greenland, the Bill was rejected. In the 1993 referendum, which did not include the Faroe Islands and Greenland, the Bill was approved. In the 1998 referendum, which did not include the Faroe Islands and Greenland, the Bill was approved.

Note. For *consultative referendums*: The sale of the West Indian Islands was sent to referendum under Act no. 204 and 336 of 30 September and 10 November respectively, 1916. According to the referendum, ratification of the agreement should be submitted to the Rigsdag for free negotiation unless the referendum resulted in a majority against the sale, in which case it would be cancelled. The referendum applied the extended voting rights terms under the Constitution and the Elections Act of 1015 (which first entered into force in spring 1918), whereby voting rights were granted to women, 29 year-olds, and persons in private service without their own address. The electorate (incl. the Faroe Islands) thus increased compared with the election to the Folketing on 7 May 1915 to 22 April 1918 from 508,787 to 1,226,650. The electorate in the 1916 referendum is not known precisely, but is estimated at 1,200,000 incl. the Faroes. The 1986 referendum was held according to the Act of 5 February 1986.

<sup>1</sup> Columns 6 and 7 in this line should read »for 23 years« and »for 21 years« respectively.

Table 80

## Elections to county councils

	18 November 1997			20 November 2001		
	The Islands	Jutland	Total	The Islands	Jutland	Total
The electorate	1 761 323	1 884 577	3 645 900	1 771 417	1 894 545	3 665 962
Votes cast	1 261 657	1 340 829	2 602 486	1 526 039	1 627 767	3 153 806
Invalid votes	55 277	57 181	112 458	61 663	62 656	124 319
Blank votes	51 426	53 903	105 329	55 800	57 462	113 262
Other votes	3 851	3 278	7 129	5 863	5 194	11 057
Valid votes	1 206 380	1 283 648	2 490 028	1 464 376	1 565 111	3 029 487
Personal votes	736 682	901 326	1 638 008	819 173	979 123	1 798 296
Candidates	1 288	1 423	2 711	1 204	1 381	2 585
Men	911	1 051	1 962	869	1 045	1 914
Women	377	372	749	335	336	671
Elected	183	191	374	183	191	374
Men	121	144	265	131	141	272
Women	62	47	109	52	50	102
Percentage turnout	71.6	71.1	71.4	86.1	85.9	86.0
Postal	2.9	2.5	2.7	5.1	4.2	4.6
Invalid	4.4	4.3	4.3	4.0	3.8	3.9
Personal	61.1	70.2	65.8	55.9	62.6	59.4
Candidates –						
of whom women	29.3	26.1	27.6	27.8	24.3	26.0
Elected candidates –						
of whom women	33.9	24.6	29.1	28.4	26.2	27.3

Note. The islands do not include the Municipalities of Copenhagen and Frederiksberg for county elections. *Percentage turnout* is the votes cast as a percentage of the electorate. The *percentage of postal votes* is a percentage of the total votes cast. The *percentage of invalid votes* is a percentage of the total votes cast. The *percentage of personal votes* is the personal votes as a percentage of the valid votes.

Table 81

## Elections to county councils 20 November 2001

	Copen- hagen	Frede- riks- borg	Ros- kilde	West- Zealand	Stor- strøm	Born- holm	Funen	South Jutland	Ribe	Vejle	Ring- købing	År- hus	Vi- borg	North Jutland
<b>Percentage turnout</b>	<b>85.7</b>	<b>87.4</b>	<b>88.6</b>	<b>85.4</b>	<b>86.2</b>	<b>85.1</b>	<b>85.1</b>	<b>86.0</b>	<b>85.8</b>	<b>86.0</b>	<b>87.3</b>	<b>86.1</b>	<b>86.7</b>	<b>84.5</b>
<b>Valid votes cast, by parties</b>	Each column =100 per cent													
A	33.9	24.8	28.0	31.1	37.1	31.8	31.3	26.0	31.7	30.3	25.0	39.0	41.2	38.4
B	6.0	4.4	4.5	5.5	3.4	1.2	3.8	2.6	2.9	3.4	3.8	4.9	3.0	3.4
C	14.1	13.5	8.8	11.0	10.4	3.5	21.0	5.9	8.2	7.7	5.5	7.2	8.3	7.3
D	1.3	0.9	0.8	0.9	0.6	•	0.8	0.4	0.5	0.7	0.7	1.1	0.3	0.6
F	7.6	7.6	7.5	7.7	7.6	5.8	6.9	3.8	5.2	6.0	5.5	7.3	4.9	6.9
O	8.6	5.9	8.4	9.8	8.2	4.1	7.4	6.8	6.8	9.5	6.5	5.9	6.5	5.5
Q	1.1	1.2	1.2	1.1	1.0	5.1	0.9	1.8	2.0	2.5	6.5	1.5	2.5	2.1
S	•	•	•	•	•	•	•	2.7	•	•	•	•	•	•
U	•	•	•	•	•	•	0.1	•	0.2	•	•	0.1	•	•
V	23.3	38.7	38.6	29.1	27.8	39.2	22.0	45.8	40.6	36.1	45.2	28.4	28.8	30.6
Z	0.3	0.3	0.3	0.5	0.4	•	•	0.9	0.5	0.4	0.7	0.3	2.5	0.7
Ø	2.9	2.0	1.9	1.9	1.9	1.8	2.0	0.7	0.8	1.4	0.5	2.8	0.7	1.1
Other	0.8	0.7	0.2	1.4	1.7	7.5	3.8	2.5	0.6	1.9	0.1	1.7	1.1	3.2
<b>Candidates elected, by party</b>	<b>31</b>	<b>21</b>	<b>23</b>	<b>29</b>	<b>31</b>	<b>17</b>	<b>31</b>	<b>29</b>	<b>21</b>	<b>31</b>	<b>21</b>	<b>31</b>	<b>27</b>	<b>31</b>
<b>Women as percentage of total</b>	<b>29.0</b>	<b>33.3</b>	<b>30.4</b>	<b>34.5</b>	<b>25.8</b>	<b>17.6</b>	<b>25.8</b>	<b>31.0</b>	<b>14.3</b>	<b>29.0</b>	<b>33.3</b>	<b>32.3</b>	<b>18.5</b>	<b>22.6</b>
A	11	6	6	10	12	6	10	8	7	10	5	13	12	13
B	2	1	1	2	1	-	1	1	1	1	1	1	1	1
C	5	3	2	3	3	-	7	1	2	2	1	2	2	2
D	-	-	-	-	-	•	-	-	-	-	-	-	-	-
F	2	1	2	2	3	1	2	1	1	2	1	2	1	2
O	2	1	2	3	2	-	2	2	1	3	1	2	2	1
Q	-	-	-	-	-	1	-	-	-	1	2	-	-	-
S	•	•	•	•	•	•	•	1	•	•	•	•	•	•
U	•	•	•	•	•	•	-	•	-	•	•	-	•	•
V	8	9	10	9	10	9	8	15	9	12	10	10	9	11
Z	-	-	-	-	-	•	•	-	-	-	-	-	-	-
Ø	1	-	-	-	-	-	-	-	-	-	-	1	-	-
Other	-	-	-	-	-	-	1	-	-	-	-	-	-	1

NOTE: A: Social Democratic Party. B: Social Liberal Party. C: Conservative People's Party. D: Centre Democratic Party. F: Socialist People's Party. O: Danish People's Party. Q: Christian People's Party. S: Schleswig Party. U: Democratic Renewal. V: Liberal Party. Z: Progress Party. Ø: Unity List.



Table 82

## Elections to county councils. Distribution of votes cast

	18 November 1997				20 November 2001			
	Valid votes cast		Candi-Of whom		Valid votes cast		Candi-Of whom	
	Number	Per cent	dates	electd	Number	Per cent	dates	electd
<b>Total</b>	<b>2 490 028</b>	<b>100.0</b>	<b>2 711</b>	<b>374</b>	<b>3 029 487</b>	<b>100.0</b>	<b>2 585</b>	<b>374</b>
Social Democratic Party	838 369	33.7	350	136	994 717	32.8	331	129
Social Liberal Party	113 687	4.6	334	15	126 140	4.2	319	15
Conservative People's Party	293 470	11.8	292	40	314 757	10.4	271	35
Centre Democratic Party	24 362	1.0	106	-	24 895	0.8	106	-
Socialist People's Party	181 367	7.3	247	25	203 310	6.7	248	23
Danish People's Party	163 483	6.6	169	21	219 658	7.3	188	24
Christian People's Party	43 419	1.7	191	2	55 686	1.8	161	4
Schleswig Party	4 538	0.2	23	1	4 417	0.1	27	1
Democratic Renewal	645	0.0	6	-	1 179	0.0	18	-
Liberal Party	665 857	26.7	345	124	963 209	31.8	356	139
Progress Party	47 163	1.9	233	3	15 205	0.5	136	-
Unity List	51 610	2.1	162	2	54 296	1.8	167	2
Other	62 058	2.5	253	5	52 018	1.7	257	2

Table 83

## Elections to municipality councils

	18 November 1997			20 November 2001		
	The Islands	Jutland	Total	The Islands	Jutland	Total
The electorate	2 244 203	1 883 508	4 127 711	2 260 488	1 894 312	4 154 800
Votes cast	1 549 639	1 342 200	2 891 839	1 901 958	1 630 273	3 532 231
Invalid votes	24 014	18 772	42 786	31 755	29 060	60 815
Blank votes	19 007	15 303	34 310	26 471	22 273	48 744
Other votes	5 007	3 469	8 476	5 284	6 787	12 071
Valid votes	1 525 625	1 323 428	2 849 053	1 870 203	1 601 213	3 471 416
Personal votes	1 116 373	1 092 643	2 209 016	1 272 590	1 227 702	2 500 292
Candidates	8 562	8 811	17 373	8 467	8 447	16 914
Men	5 977	6 435	12 412	5 902	6 164	12 066
Women	2 585	2 376	4 961	2 565	2 283	4 848
Elected	2 268	2 417	4 685	2 250	2 397	4 647
Men	1 601	1 823	3 424	1 585	1 808	3 393
Women	667	594	1 261	665	589	1 254
Percentage turnout	69.1	71.3	70.1	84.1	86.1	85.0
Postal	3.1	2.5	2.8	5.2	4.4	4.9
Invalid	1.5	1.4	1.5	1.7	1.8	1.7
Personal	73.2	82.6	77.5	68.0	76.7	72.0
Candidates -						
of whom women	30.2	27.0	28.6	30.3	27.0	28.7
Elected candidates -						
of whom women	29.4	24.6	26.9	29.6	24.6	27.0

Note. The Islands do not include the Municipalities of Copenhagen and Frederiksberg for county elections. *Percentage turnout* is the votes cast as a percentage of the electorate. The *percentage of postal votes* is a percentage of the total votes cast. The *percentage of invalid votes* is a percentage of the total votes cast. The *percentage of personal votes* is the personal votes as a percentage of the valid votes.

Table 84

## Elections to municipality councils. Distribution of votes cast

	18 November 1997				20 November 2001			
	Valid votes cast		Candi- dates	Of whom elected	Valid votes cast		Candi- dates	Of whom elected
	Number	Per cent			Number	Per cent		
<b>Total</b>	<b>2 849 053</b>	<b>100.0</b>	<b>17 373</b>	<b>4 685</b>	3 471 416	100.0	16 914	4 647
Social Democratic Party	962 744	33.8	3 718	1 648	1 125 859	32.4	3 611	1 551
Social Liberal Party	93 291	3.3	1 004	87	134 018	3.9	993	88
Conservative People's Party	350 022	12.3	2 117	481	391 111	11.3	2 107	444
Centre Democratic Party	14 688	0.5	192	4	15 024	0.4	169	3
Socialist People's Party	213 091	7.5	1 302	233	261 301	7.5	1 325	237
Danish People's Party	144 408	5.1	484	119	188 452	5.4	829	168
Christian People's Party	31 354	1.1	506	30	37 192	1.1	491	31
Schleswig Party	4 160	0.1	73	8	4 072	0.1	69	7
Democratic Renewal	84	0.0	4	-	576	0.0	21	-
Liberal Party	699 677	24.6	4 114	1 557	983 856	28.3	3 846	1 666
Progress Party	45 117	1.6	708	44	9 609	0.3	268	5
The Red/Green Parties	55 591	2.0	300	14	60 503	1.7	349	11
Other	234 826	8.2	2 851	460	259 843	7.5	3 836	436

Table 85

## Elections to the European Parliament. Summary

	9 June 1994			10 June 1999		
	The Islands	Jutland	Total	The Islands	Jutland	Total
The electorate	2 155 615	1 838 585	3 994 200	2 159 493	1 850 101	4 009 594
Votes cast	1 177 717	936 063	2 113 780	1 130 736	892 570	2 023 306
Postal votes	50 486	29 411	79 897	42 792	25 047	67 839
Invalid votes	19 232	14 611	33 843	29 352	23 678	53 030
Blank votes	15 739	12 407	28 146	25 341	20 842	46 183
Other votes	3 493	2 204	5 697	4 011	2 836	6 847
Valid votes	1 158 485	921 452	2 079 937	1 101 384	868 892	1 970 276
Of which personal	901 936	723 141	1 625 077	853 558	656 439	1 509 997
Candidates	...	...	183	...	...	205
Men	...	...	126	...	...	145
Women	...	...	57	...	...	60
Elected	...	...	16	...	...	16
Men	...	...	9	...	...	10
Women	...	...	7	...	...	6
Percentage voting	54.6	50.9	52.9	52.4	48.2	50.5
Postal	4.29	3.14	3.78	3.78	2.81	3.35
Invalid	1.63	1.56	1.60	2.60	2.65	2.62
Personal	77.9	78.5	78.1	77.5	75.5	76.6
Female percentage of candidates	...	...	31.1	...	...	29.3
Female percentage of elected	...	...	43.8	...	...	37.5

Note. For the EU elections, Denmark is 1 constituency where parties with nomination rights put up lists for the country.

Source: Ministry of the Interior.

Table 86

## Elections to the European Parliament. Distribution of votes cast

	9 June 1994				10 June 1999			
	Valid votes cast		Candi- dates	Of whom elected	Valid votes cast		Candi- dates	Of whom elected
	Number	Per cent			Number	Per cent		
<b>Total</b>	<b>2 079 937</b>	<b>100.0</b>	<b>183</b>	<b>16</b>	<b>1 970 276</b>	<b>100.0</b>	<b>205</b>	<b>16</b>
A Social Democratic Party	329 202	15.8	14	3	324 256	16.5	15	3
B Social Liberal Party	176 480	8.5	20	1	180 089	9.1	20	1
C Conservative People's Party	368 890	17.7	18	3	166 884	8.5	20	1
D Centre Democratic Party	18 365	0.9	20	-	68 717	3.5	20	-
F Socialist People's Party	178 543	8.6	19	1	140 053	7.1	20	1
J June Movement	316 687	15.2	20	2	317 508	16.1	20	3
N People's Movement against the EU	214 735	10.3	20	2	143 709	7.3	20	1
O Danish People's Party	•	•	•	•	114 865	5.8	20	1
Q Christian People's Party	22 986	1.1	20	-	39 128	2.0	18	-
V Liberal Party	394 362	19.0	12	4	460 834	23.4	12	5
Z Progress Party	59 687	2.9	20	-	14 233	0.7	20	-

Note. The distribution of mandates is on the basis of total electorate in the country lists. Electoral pact for the 1999 election: CDV and JN; for the 1994 election: BQ, CDV and JN.

Source: Ministry of the Interior.

Table 87

## Elections to local church councils 12 November 1996

	Copen- hagen	Hel- singør	Ros- kilde	Lolland- Falster	Funen	Hader- slev	Ribe	Århus	Viborg	Ål- borg	All Den- mark
	----- dioceses -----										
<b>All dioceses</b>											
Number of districts	112	147	316	104	233	164	222	331	285	305	2 219
Candidates	1 818	2 489	3 688	1 144	2 712	2 222	2 752	4 058	3 263	3 461	27 607
Men	828	1 216	1 665	527	1 240	1 103	1 397	1 879	1 674	1 686	13 215
Women	990	1 273	2 023	617	1 472	1 119	1 355	2 179	1 589	1 775	14 392
Women as percentage of total	54.5	51.1	54.9	53.9	54.3	50.4	49.2	53.7	48.7	51.3	52.1
Elected candidates	1 268	1 604	2 366	661	1 735	1 306	1 604	2 506	1 974	2 154	17 178
Men	591	803	1 088	304	792	672	808	1 209	1 040	1 082	8 389
Women	677	801	1 278	357	943	634	796	1 297	934	1 072	8 789
Women as percentage of total	53.4	49.9	54.0	54.0	54.4	48.5	49.6	51.8	47.3	49.8	51.2
<b>Non-voting dioceses</b>											
Number of dioceses	96	115	288	101	206	121	192	277	233	259	1 888
Elected	1 086	1 191	2 097	628	1 498	887	1 292	1 963	1 499	1 731	13 872
Men	502	592	958	282	689	446	646	929	764	862	6 670
Women	584	599	1 139	346	809	441	646	1 034	735	869	7 202
Women as percentage of total	53.8	50.3	54.3	55.1	54.0	49.7	50.0	52.7	49.0	50.2	51.9
<b>Voting dioceses</b>											
Number of dioceses	16	32	28	3	27	43	30	54	52	46	331
Electorate	67 520	195 504	98 629	16 797	71 062	142 870	109 994	169 481	134 690	130 407	1 136 954
Votes cast	7 479	23 274	16 170	2 944	10 764	25 893	22 489	24 578	27 203	22 678	183 472
Of which invalid	146	290	194	41	177	340	221	304	243	205	2 161
Valid votes	7 333	22 984	15 976	2 903	10 587	25 553	22 268	24 274	26 960	22 473	181 311
Of which personal	6 622	20 462	14 630	2 697	9 907	23 972	20 733	21 487	25 584	21 440	167 534
Percentage turnout	11.1	11.9	16.4	17.5	15.1	18.1	20.4	14.5	20.2	17.4	16.1
Of which by letter	1.75	1.68	1.49	2.04	2.25	1.37	1.71	1.59	1.85	1.48	1.65
Invalid as percentage of valid votes cast	1.95	1.25	1.20	1.39	1.64	1.31	0.98	1.24	0.89	0.90	1.18
Personal votes as percentage of valid votes cast	90.3	89.0	91.6	92.9	93.6	93.8	93.1	88.5	94.9	95.4	92.4
All candidates	313	733	503	70	421	755	622	1 016	888	796	6 117
Men	157	365	252	43	199	400	323	503	488	407	3 137
Women	156	368	251	27	222	355	299	513	400	389	2 980
Women as percentage of total	49.8	50.2	49.9	38.6	52.7	47.0	48.1	50.5	45.0	48.9	48.7
Elected candidates	182	413	269	33	237	419	312	543	475	423	3 306
Men	89	211	130	22	103	226	162	280	276	220	1 719
Women	93	202	139	11	134	193	150	263	199	203	1 587
Women as percentage of total	51.1	48.9	51.7	33.3	56.5	46.1	48.1	48.4	41.9	48.0	48.0

Note. For non-voting dioceses, the electorate is no longer counted which is why there are no figures for total electorate here.