

National accounts and balance of payments

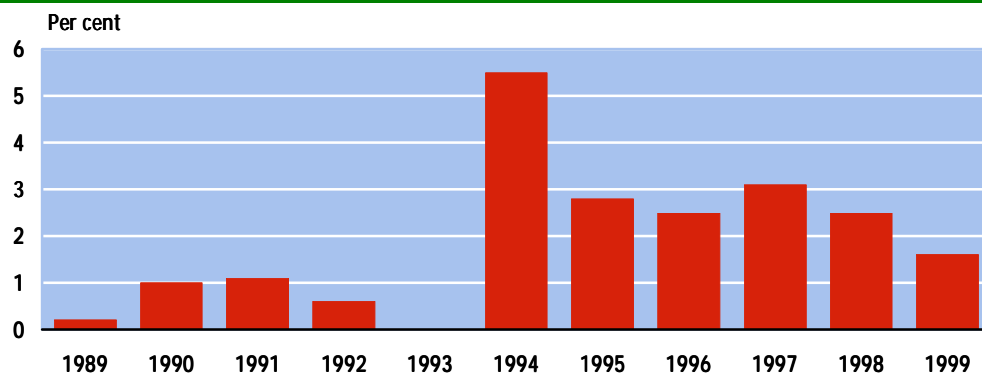
1. Danish economy 1989 to 1999

Lean and fat years

Over the past decade, the Danish economy has moved from a period of stagnation and falling employment to a period of economic boom and a return to previous high employment levels. The lean years from the end of the 1980s to 1993 showed average annual economic growth of less than 0.6 pct. (measured as the increase in GDP in 1995 prices). This development was turned around at the end of 1993, and a strong economic recovery began in 1994. The average actual annual growth in GDP was 3.3 pct. from 1994 to 1998. In 1999 growth in domestic demand moderated significantly and total economic growth was 1.6 pct.

Figure 1

Real growth in GDP 1989-1999. Annual growth rates

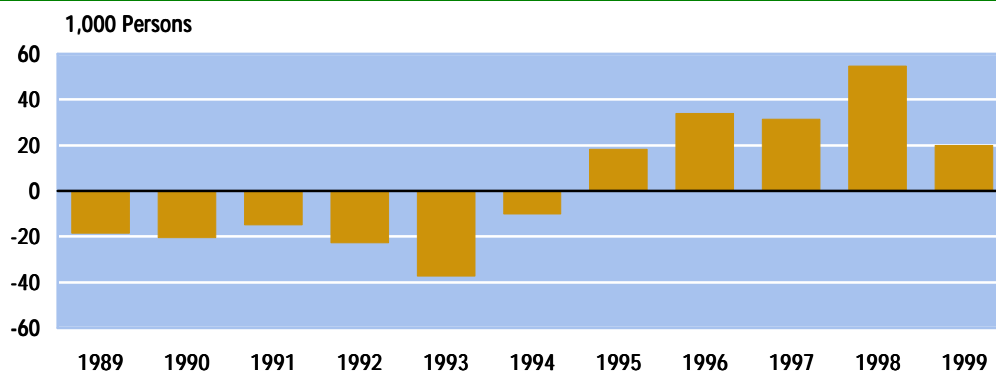


Employment in 1999 the highest ever

Employment fell between 1989 and 1994 by a total of about 124,000, but during the following years, more people found employment. In 1999 an average of 2,678,700 people were employed which is the highest figure for employment ever recorded.

Figure 2

Annual growth in employment 1989-1999



National accounts and balance of payments

Goods-producing sectors (agriculture, etc., industry, energy, and construction) employed fewer people in 1999 than ten years earlier. In 1988, 31 pct. were employed in the goods-producing sectors, while in 1999 the proportion was 27 pct. During the period from 1988, employment increased, in particular in the private service sector (from 40 pct. in 1988 to 43 pct. in 1999). However, the percentage in public administration and service also increased from 29 pct. in 1988 to 30 pct. of all those employed in 1999.

2. Domestic demand and foreign trade

Domestic demand was the driving force in the 90s

In contrast to domestic demand, exports rose strongly up to 1991. After this, the foreign economic cycle turned, and the subsequent weaker growth meant that domestic demand became the driving force in the Danish economy.

Figure 3

Contribution to real annual growth in GDP 1989-1999

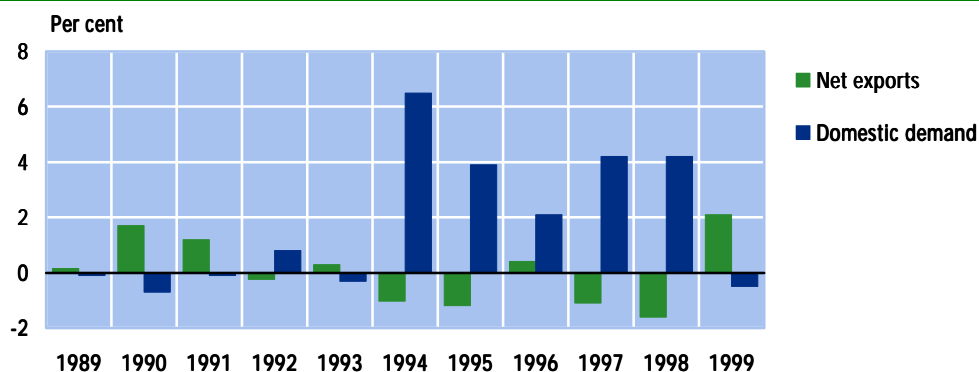
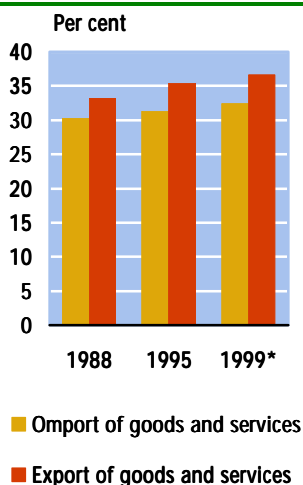


Figure 4
Imports and exports as pct. of GDP, prices for the year

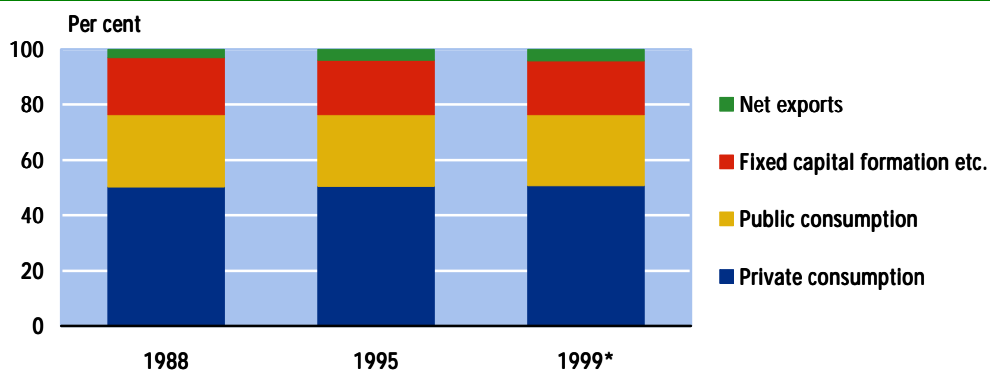


In 1998, domestic demand remained strong, while exports were weakened by the general strike and the after effects of the crises in Asia and Russia. Therefore, there was again a deficit on Denmark's balance of payments in 1998.

In 1999 domestic demand moderated and resulted in a reduction in import growth. At the same time the economic cycle abroad improved and competitiveness was strengthened through a drop in the effective exchange rate for the krone. This contributed to an increase in exports and developments in the Danish economy were reversed so that in 1999 net exports again pushed economic growth upward, though at a higher level than in the early 1990s.

The dramatic recovery in domestic demand from 1994 was broadly funded by growth in both consumption and investment. This is reflected in a relatively stable distribution of domestic applications. Figures 4 and 5 show a number of main figures in the national accounts as a percentage of GDP for 1988, 1995, and 1999. There has been a weak increase in the proportion of GDP represented by private consumption, while public consumption represented a correspondingly lower proportion in 1999. Most remarkable is that Denmark's foreign trade grew significantly measured as the size of imports and exports in proportion to GDP. Exports rose most, and therefore, net exports as a percentage of GDP rose from 2.9 pct. in 1988 to 4.2 pct. in 1999.

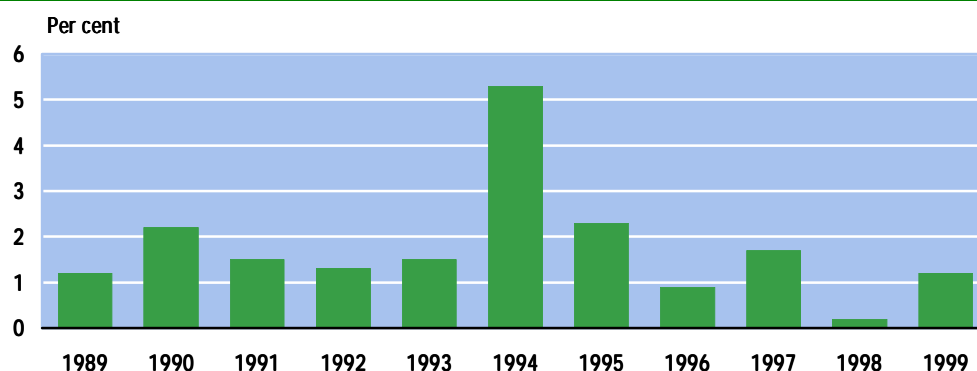
Figure 5 Final applications as a percentage of GDP, prices for the year



Increase in employment resulted in weaker growth in productivity

The productivity of the labour force measured as gross added value at constant prices per worker increased by an annual average of 1.8 pct. from 1989 to 1999. This development conceals a large increase in productivity at the beginning of the economic recovery and considerably weaker growth in recent years where many more people have found jobs.

Figure 6 Growth in gross added value at 1995 prices per worker 1989-1999. Annual growth rate

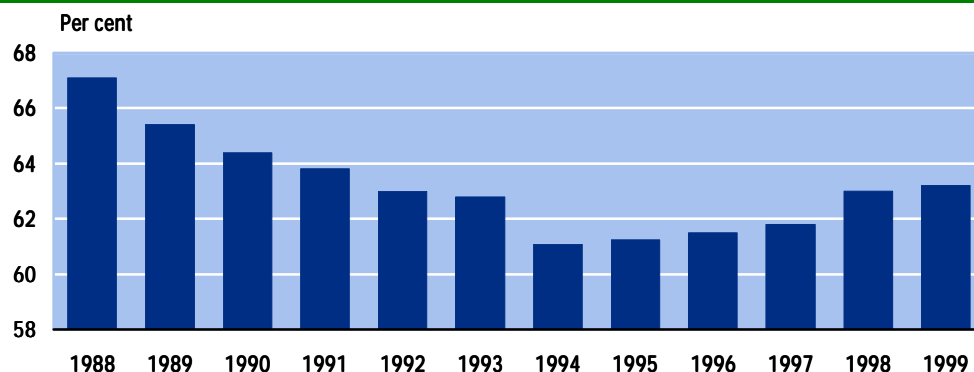


Enterprises' profits grew more than pay

Total income from production comprises compensation of employees and enterprises' profits (gross operating surplus and mixed income). The proportion of compensation of employees in relation to total income fell during the period of stagnation. Despite increases in the nominal pay per employee of more than 4 pct. from 1989 to 1992, the drop in total employment meant that the wage shares fell. From 1995 there was a steady increase in employment which, together with the increase in pay per employee of just over 3 pct., increased the wage shares compared with the previous year. In 1999, there was only slight growth in employment while the increase in pay per employee rose to 4.3 pct. The figure below shows changes in compensation of employees as a proportion of gross income at factor prices (the wage share).

Figure 7

Wage share 1988-1999



3. Balance of payments

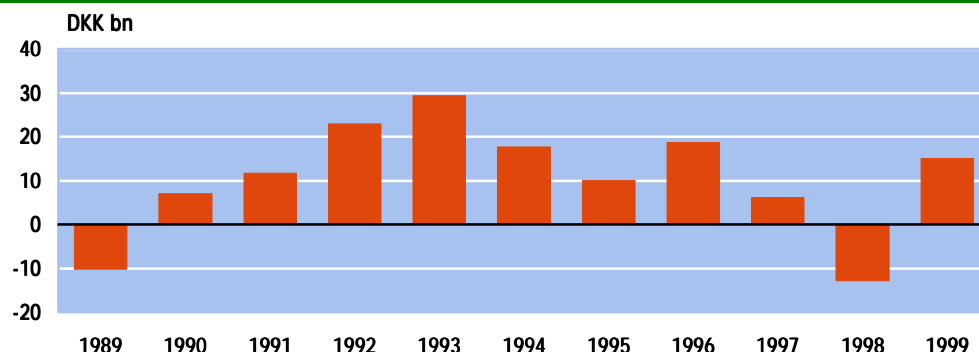
Savings and the balance of payments

The savings quota of the whole of society (i.e. savings as a percentage of disposable income) increased from 20.1 pct. in 1988 to 21.1 pct. in 1997, and after this fell in 1998 to 20.5 pct. Throughout the period from 1990 to 1997 savings were able to finance society's investment (capital formation), but as the growth in capital formation from 1994 was very high, net lending for society as a whole (the balance of payments surplus for Denmark less the Faeroes and Greenland, plus net capital transfers) fell from DKK 25 bn. in 1993 to DKK 15.5 bn. in 1998.

The savings quota increased again in 1999 to 21.1 pct. And net lending was DKK 12.0 bn. The general positive net lending is reflected in the reduction in Denmark's foreign debt. Debt is also influenced by changes in the prices of stocks and shares, and currency exchange fluctuations. In 1999 these changes had a significant effect in that net debt fell from DKK 300 bn. To DKK 175 bn. during the year.

Figure 8

Balance of payments surplus, current items, DKK bn. 1989-1999



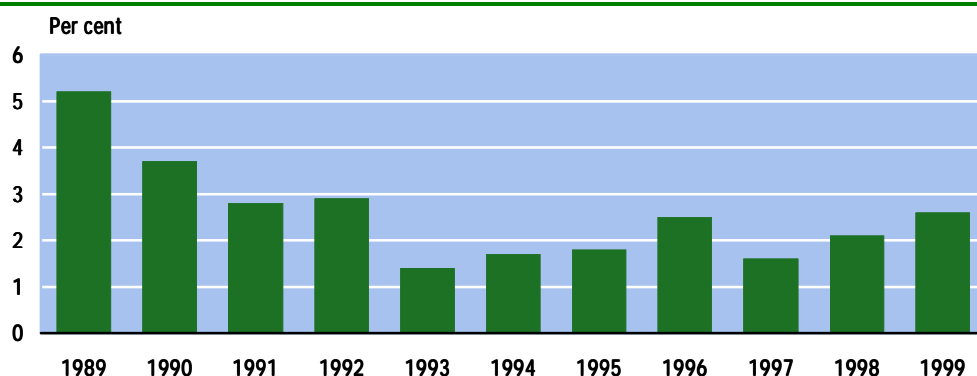
4. Inflation

Higher inflation in 1999

In the late 1980s, prices (measured as the annual increase in the GDP deflator) rose by more than 5 pct. Since 1990, however, inflation has been less than 3 pct. p.a. From 1994 to 1998 annual price increases remained at just under 2 pct. In 1999 inflation increased again. Although the level of inflation is by no means high compared with previous decades, in relation to the other EU Member States, Danish inflation was higher in 1999 than in the early 1990s.

Figure 9

Inflation measured as the annual increase in the GDP deflator. 1989-1999



5. International comparisons

Danish growth high relative to the rest of the EU

Of the countries with the greatest significance for Danish economic development, the USA and Great Britain in particular have had high economic growth in recent years. Growth in Germany has been weak and in Japan there have been periods of actual reductions in economic activity. Since 1995 Denmark has experienced slightly higher economic growth than the EU average.

Figure 10

GDP in selected countries, constant prices

Index 1995=100

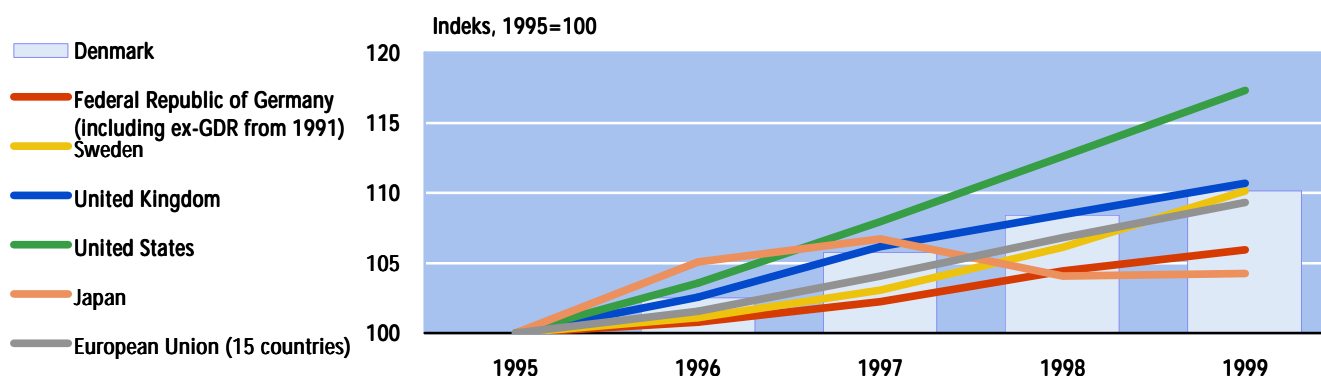


Table 368

Supply and demand 1990-1999

	Gross domestic product at market prices	Import of goods and services	Resources, total	Private consumption expenditure	Government consumption expenditure	Gross fixed capital formation	Export of goods and services
—DKK mio. in current prices—							
1990	825 310	253 832	1 079 142	404 915	210 930	167 599	295 698
1991	857 652	268 677	1 126 329	423 030	220 530	163 679	319 090
1992	887 868	265 572	1 153 440	439 262	229 156	160 775	324 246
1993	900 153	257 305	1 157 458	450 158	240 918	147 804	318 577
1994	965 718	291 002	1 256 720	493 821	250 302	169 966	342 632
1995	1 009 756	316 144	1 325 900	509 551	260 299	198 596	357 454
1996	1 060 888	327 181	1 388 069	533 209	274 562	200 884	379 413
1997*	1 111 958	366 849	1 478 807	564 009	284 529	224 529	405 741
1998*	1 163 820	388 462	1 552 282	594 297	300 124	247 132	410 729
1999*	1 215 816	397 277	1 613 093	613 469	312 937	238 323	448 363
—DKK mio. in 1995 prices—							
1990	915 918	262 616	1 178 534	454 311	234 378	176 410	313 436
1991	926 130	270 484	1 196 614	461 622	235 799	166 605	332 587
1992	931 786	269 384	1 201 170	470 389	237 713	163 497	329 571
1993	931 773	262 228	1 194 001	472 690	247 555	148 988	324 768
1994	982 704	294 500	1 277 204	503 350	254 870	171 623	347 360
1995	1 009 756	316 144	1 325 900	509 551	260 299	198 596	357 454
1996	1 035 188	327 357	1 362 545	522 160	269 085	198 401	372 900
1997*	1 067 667	353 691	1 421 358	541 718	272 587	219 039	388 013
1998*	1 094 796	379 614	1 474 410	560 565	280 642	236 832	396 370
1999*	1 113 193	387 848	1 501 041	564 195	284 515	224 489	427 843
—Annual real growth in pct.—							
1990	1.0	1.2	1.0	0.1	-0.2	-3.3	6.2
1991	1.1	3.0	1.5	1.6	0.6	-5.6	6.1
1992	0.6	-0.4	0.4	1.9	0.8	-1.9	-0.9
1993	0.0	-2.7	-0.6	0.5	4.1	-8.9	-1.5
1994	5.5	12.3	7.0	6.5	3.0	15.2	7.0
1995	2.8	7.3	3.8	1.2	2.1	15.7	2.9
1996	2.5	3.5	2.8	2.5	3.4	-0.1	4.3
1997*	3.1	8.0	4.3	3.7	1.3	10.4	4.1
1998*	2.5	7.3	3.7	3.5	3.0	8.1	2.2
1999*	1.7	2.2	1.8	0.6	1.4	-5.2	7.9

Table 369

Generation and disposition of income 1996-1999

	1996	1997*	1998*	1999*
	DKK mio. at current prices			
Compensation of employees	560 676	587 905	620 721	653 257
+ Gross operating surplus and mixed income	351 503	362 644	365 258	381 639
Gross domestic income at factor cost, GDI	912 179	950 548	985 979	1 034 896
+ Other taxes less subsidies on production	-2 342	-291	2 241	1 810
Gross value added	909 837	950 257	988 221	1 036 706
+ Taxes on products	169 280	179 429	193 125	198 192
÷ Subsidies on products	18 230	17 728	17 526	19 082
Gross domestic product at market prices, GDP	1 060 888	1 111 958	1 163 820	1 215 816
+ Compensation of employees from the rest of the world	6 410	5 797	5 486	5 473
÷ Compensation of non-resident employees	2 044	2 444	2 340	4 842
+ Property and entrepreneurial income from the rest of the world	113 020	75 171	64 795	54 893
÷ Property and entrepreneurial income paid to the rest of the world	138 835	102 466	92 636	75 261
Gross national income, GNI	1 046 867	1 094 461	1 145 384	1 203 376
+ Current taxes on income, wealth, etc. from the rest of the world	870	978	936	1 937
+ Other current transfers, etc from the rest of the world	10 977	13 857	13 620	11 864
÷ Current taxes on income, wealth, etc. to the rest of the world.	1 633	1 363	1 326	1 258
÷ Other current transfers, etc. to the rest of the world.	32 990	32 216	32 954	38 849
Gross disposable income	1 024 091	1 075 717	1 125 659	1 177 070
÷ Private final consumption expenditure	533 209	564 009	594 297	613 469
÷ General government final consumption expenditure	274 562	284 529	300 124	312 937
Gross national saving	216 319	227 178	231 239	250 664
÷ Corporations and households gross capital action	180 619	204 033	227 573	218 230
÷ General government gross capital formation	20 266	20 495	19 557	20 094
Current external balance	15 435	2 650	-15 893	12 340
+ Capital transfers from the rest of the world	587	1 206	2 361	2 577
÷ Capital transfers to the rest of the world	448	450	2 010	1 701
Net lending	15 574	3 405	-15 543	13 216

Table 370

Net domestic product at factor cost, consumption and gross fixed capital formation 1870-1999

	Net domestic product at factor cost		Total consumption ¹			Gross fixed capital formation
	Constant prices	Annual increase at constant prices	Constant prices	Constant prices per inhabitant	Annual real growth per inhabitant	Constant prices
	1980=100	Per cent	1980=100-		Per cent	1980=100
1870-1894 ² average	7	2.7	7	18	1.9	4
1895-1914 ² »	15	3.8	15	29	1.9	10
1921-1929 »	25	4.1	25	37	2.8	13
1930-1939 »	31	2.2	30	42	1.3	19
1940-1946 »	31	2.9	28	37	4.4	16
1947-1950 »	40	4.2	39	47	1.8	30
1951-1957 »	45	2.7	43	50	2.0	38
1958-1965 »	59	5.2	57	63	4.8	64
1966-1973 »	81	4.0	79	82	3.0	105
1974-1975 »	89	-3.1	88	89	0.4	107
1976-1979 »	96	2.3	98	98	1.8	114
1980-1981 »	99	-1.9	100	100	-0.6	90
1982-1986 »	107	3.0	106	107	2.6	103
1987-1993 »	115	0.3	111	110	0.2	117
1994-1999* »	130	2.2	128	125	1.7	138

Note: Excl. 1915-20. With regard to the basis of calculation, see the source listed below, which also contains further information regarding the years 1870-1952. The growth rates illustrate the average annual growth rate for the period in question.

¹ Incl. Changes in stock and livestock. ² From 1921 onwards, figures include South Jutland; in 1921 the net domestic product at factor cost in South Jutland appears to have comprised 2-3 per cent of the total net domestic product at factor cost.

Source: Kjeld Bjerke and Niels Ussing: *Studier over Danmarks nationalprodukt 1870-1950*, Copenhagen 1958.

Table 371

Denmark and rest of the world (ROW) 1996-1999

	1996	1997*	1998*	1999*
	DKK mio. in current prices			
Exports of goods	296 939	319 560	322 118	347 623
+ Income from tourism from ROW	20 223	21 339	22 204	25 963
+ Exports of other services	62 251	64 842	66 407	74 776
+ Compensation of employees from ROW	6 410	5 797	5 486	5 473
+ Subsidies from ROW	9 642	9 001	8 790	9 867
+ Property income from ROW	113 020	75 171	64 795	54 893
+ Current taxes on income, wealth, etc. from ROW	870	978	936	1 937
+ Other current transfers, etc. from ROW	10 977	13 857	13 620	11 864
Current income from ROW	520 332	510 544	504 356	532 397
+ Capital transfers, receivable from ROW	587	1 206	2 361	2 577
Total income from ROW	520 919	511 750	506 717	534 974
Imports of goods	261 731	291 994	306 851	312 461
+ Expenditure on tourism in ROW	24 673	28 222	32 712	36 975
+ Imports of other services	40 777	46 633	48 898	47 841
+ Compensation of employees to ROW	2 044	2 444	2 340	4 842
+ Taxes on production and import	2 214	2 556	2 531	2 570
+ Property income to ROW	138 835	102 466	92 636	75 261
+ Current taxes on income, wealth, etc. to ROW	1 633	1 363	1 326	1 258
+ Other current transfers, etc. to ROW	32 990	32 216	32 954	38 849
Current expenditure to ROW, total	504 897	507 895	520 250	520 057
+ Capital transfers, payable to ROW	448	450	2 010	1 701
Total expenditure to ROW	505 345	508 345	522 260	521 757
External balance of goods	35 208	27 566	15 267	35 162
External balance of services	17 024	11 325	7 000	15 924
External balance of goods and services	52 232	38 891	22 267	51 086
Current external balance	15 435	2 650	-15 893	12 340
Net lending	15 574	3 405	-15 543	13 217

Note: Figures are excluding Greenland and Faroe Islands.

Table 372

General government 1996-1999

	1996	1997*	1998*	1999*
	DKK bn. in current prices			
Output	293 818	304 985	321 136	335 610
÷ Intermediate consumption	82 940	85 836	90 798	96 977
Gross value added, GVA	210 878	219 149	230 339	238 633
÷ Consumption of fixed capital	25 280	25 796	25 885	26 018
Net value added	185 598	193 353	204 454	212 614
Gross value added, GVA	210 878	219 149	230 339	238 633
÷ Other taxes less subsidies on production	1 729	2 043	2 366	2 228
Gross domestic product at factor cost	209 149	217 106	227 972	236 405
÷ Compensation of employees (paid by res. employers)	183 869	191 310	202 087	210 387
Gross operating surplus and mixed income	25 280	25 796	25 885	26 019
+ Taxes on production and income	183 220	195 183	210 895	216 850
÷ Subsidies	27 084	27 327	26 795	28 634
+ Property income, net from ROW	-21 813	-22 685	-19 145	-17 935
Gross primary income	159 603	170 967	190 840	196 299
+ Current taxes on income, wealth, etc.	324 878	338 944	345 626	367 370
+ Social contributions	27 838	29 156	30 410	38 319
+ Social benefits other than transfers in kind
+ Other current transfers	7 133	7 536	7 987	8 585
Gross total income	519 451	546 603	574 863	610 573
+ Current taxes on income, wealth, etc.
+ Social contributions
+ Social benefits other than transfers in kind	210 313	210 191	211 761	214 928
+ Other current transfers	25 376	26 525	29 722	30 507
Gross total expenditure	235 688	236 717	241 483	245 435
Gross disposable income	283 762	309 887	333 380	365 138
÷ Social transfers in kind	184 573	193 590	205 192	214 692
Adjusted gross disposable income	99 189	116 297	128 188	150 446
Gross disposable income	283 762	309 887	333 380	365 138
÷ Final consumption expenditure	274 562	284 529	300 126	312 937
Gross saving	9 200	25 358	33 254	52 200
Adjusted gross disposable income	99 189	116 297	128 188	150 446
÷ Actual collective consumption	89 981	90 939	94 934	98 245
Gross saving	9 200	25 358	33 254	52 200
+ Capital transfers, net	480	435	275	2 243
Changes in net worth due to saving and capital transfers	9 681	25 792	33 530	54 444
÷ Gross fixed capital formation, etc.	20 366	20 498	19 558	20 093
÷ Changes in inventories	-100	-3	-1	1
÷ Acquisitions of non-financial non-produced assets, net.	-	-	-	-
Net lending	-10 585	5 297	13 972	34 349

Table 373

Corporate sector 1996-1998

	1996	1997*	1998*
	DKK bn. in current prices		
Output	1 178 761	1 242 717	1 280 117
÷ Intermediate consumption	621 473	658 765	672 691
Gross value added, GVA	557 288	583 952	607 425
÷ Consumption of fixed capital	89 634	96 441	97 719
Net value added	467 654	487 511	509 707
Gross value added, GVA	557 288	583 952	607 425
÷ Other taxes less subsidies on production	-3 079	-1 739	-56
Gross domestic product at factor cost,	560 368	585 691	607 481
÷ Compensation of employees (paid by resident producers)	334 649	352 396	372 214
Gross operating surplus and mixed income	225 719	233 295	235 267
+ Property income, net.	6 048	6 983	1 592
÷ Financial intermediation services indirectly measured (FISIM)	31 212	30 984	32 400
Gross entrepreneurial income	229 022	243 010	245 206
Gross primary income	200 555	209 293	204 459
+ Current taxes on income, wealth, etc.	.	.	.
+ Social contributions	30 716	33 793	38 822
+ Social benefits other than transfers in kind	.	.	.
+ Other current transfers	37 056	39 356	40 397
Gross total income	268 328	282 442	283 678
+ Current taxes on income, wealth, etc.	24 552	28 698	32 689
+ Social contributions	.	.	.
+ Social benefits other than transfers in kind	20 375	21 754	23 314
+ Other current transfers	37 473	37 727	38 219
Gross total expenditure	82 399	88 179	94 222
Gross disposable income	185 928	194 263	189 456
÷ Adjustment for the change in net equity of households in pension funds reserves	10 342	12 039	15 508
Gross saving	175 587	182 224	173 948
+ Capital transfers, net.	1 120	1 390	922
Changes in net worth due to saving and capital transfers	176 706	183 614	174 871
÷ Gross fixed capital formation, etc.	137 543	152 666	168 100
÷ Changes in inventories	1 576	4 403	6 748
÷ Acquisitions of non-financial non-produced assets, net.	-626	-670	-1 173
Net lending	38 213	27 215	1 194

Note: Figures for the corporate sector and the household sector have been carried forward up to and including 1998.

Table 374

Household sector 1996-1998

	1996	1997*	1998*
	DKK bn. in current prices		
Output	265 980	276 530	283 249
÷ Intermediate consumption	93 097	98 389	100 393
Gross value added, GVA	172 883	178 141	182 856
÷ Consumption of fixed capital	43 885	46 681	47 203
Net value added	128 998	131 459	135 653
Gross value added, GVA	172 883	178 141	182 856
÷ Other taxes less subsidies on production	-991	-596	-70
Gross domestic product at factor cost	173 874	178 736	182 926
÷ Compensation of employees (paid by resident producers)	42 158	44 199	46 420
Gross operating surplus and mixed income	131 716	134 538	136 506
+ Compensation of employees (received by resident employees)	565 042	591 257	623 867
+ Taxes on production and imports	.	.	.
+ Subsidies	.	.	.
+ Property income, net	-10 050	-11 593	-10 288
Gross primary income	686 708	714 202	750 085
+ Current taxes on income, wealth, etc.	.	.	.
+ Social contributions	.	.	.
+ Social benefits other than transfers in kind	231 427	232 691	235 821
+ Other current transfers	18 354	20 857	20 295
Gross total income	936 490	967 750	1 006 201
+ Current taxes on income, wealth, etc.	301 089	310 631	313 327
+ Social contributions	59 926	64 063	70 317
+ Social benefits other than transfers in kind	.	.	.
+ Other current transfers	21 075	21 488	19 733
Gross total expenditure	382 090	396 182	403 377
Gross disposable income	554 399	571 568	602 824
+ Social transfers in kind	184 573	193 590	205 192
Adjusted gross disposable income	738 972	765 158	808 015
Gross disposable income	554 399	571 568	602 824
+ Adjustment for the change in net equity in households in pension funds reserves	10 342	12 039	15 508
÷ Individual consumption expenditure	533 209	564 009	594 295
Gross saving	31 532	19 598	24 036
Adjusted gross disposable income	738 972	765 158	808 015
+ Adjustment for the change in net equity in households in pension funds reserves	10 342	12 039	15 508
÷ Actual individual consumption	717 782	757 599	799 489
Gross saving	31 532	19 598	24 036
+ Capital transfers, net	-1 461	-1 069	-847
Changes in net worth due to saving and capital transfer	30 071	18 529	23 189
÷ Gross fixed capital formation, etc.	40 491	44 852	48 606
÷ Changes in inventories	1 009	2 112	4 119
÷ Acquisitions of non-financial non-produced assets, net.	626	670	1 173
Net lending	-12 055	-29 105	-30 709

Note: Figures for the corporate sector and the household sector have been carried forward up to and including 1998.

Table 375

Gross value added, by kind of activity 1996-1999

	Current prices				Constant 1995 prices			
	1996	1997*	1998*	1999*	1996	1997*	1998*	1999*
	DKK mio.							
Gross value added, total	909 837	950 257	988 221	1 036 706	891 113	917 160	938 729	957 653
Of which: General government	210 878	219 149	230 339	238 633	206 007	208 545	212 972	213 250
Agriculture, fishing and quarrying	44 564	47 140	38 574	42 602	42 510	44 414	45 455	47 688
Agriculture, horticulture and forestry	30 928	30 088	26 649	26 696	31 347	31 978	33 075	34 308
Fishing, etc.	2 213	2 680	2 612	2 756	2 000	2 097	2 324	1 950
Mining and quarrying	11 423	14 372	9 312	13 151	9 163	10 338	10 056	11 430
Manufacturing	154 538	159 079	169 659	171 016	147 401	151 200	154 945	149 842
Manufacture of food, beverages and tobacco	27 151	27 066	30 523	28 021	26 015	25 669	24 977	22 916
Manufacture of textiles, clothing, leather	5 260	4 815	5 569	4 448	5 213	5 034	5 050	4 623
Manufacture of wood products, printing and publishing.	21 023	21 512	23 455	23 971	19 882	20 971	21 611	21 120
Manufacture of mineral oils, chemicals, and plastic	22 374	23 361	22 920	24 246	21 813	23 988	25 273	28 169
Manufacture of other non-metallic mineral products	7 352	7 285	7 274	7 436	7 103	6 772	6 991	6 837
Manufacture of basic metals and fabr. metal prod.	61 820	65 107	69 670	73 445	58 406	59 604	61 651	57 922
Manufacture of furniture and other industries	9 558	9 934	10 247	9 448	8 970	9 163	9 391	8 255
Energy and water supply	24 422	24 449	23 028	23 292	23 881	22 951	21 545	20 022
Construction	45 730	48 295	51 726	51 402	43 224	44 672	45 680	43 598
Wholesale/retail trade, hotels and restaurants, etc.	140 298	145 729	150 850	159 357	144 197	149 869	149 118	156 035
Sale and repair of motor vehicles, etc.	16 010	16 477	17 397	17 397	15 305	15 772	16 286	15 539
Wholesale and commission trade, except of motor vehicles	70 399	73 231	73 393	79 515	75 419	79 570	75 897	80 706
Retail trade and repair work, except of motor vehicles	37 874	39 125	42 028	43 792	38 272	39 155	41 261	44 528
Hotels and restaurants, etc.	16 014	16 895	18 033	18 654	15 202	15 372	15 675	15 262
Transport, storage and telecommunications	73 228	78 637	83 764	86 530	73 038	73 638	77 607	79 561
Transport	51 216	54 122	56 596	59 135	50 971	49 515	52 136	53 290
Postal services and telecommunications	22 012	24 514	27 168	27 395	22 067	24 123	25 471	26 271
Financial intermediation, etc., business activities	207 910	217 832	229 352	249 451	204 761	211 411	219 083	235 894
Financial intermediation and insurance	43 844	45 062	47 591	52 239	43 762	44 081	44 890	46 724
Real estate and renting activity	108 100	113 617	118 210	125 056	106 016	109 957	112 106	116 328
Business activities	55 966	59 153	63 551	72 156	54 984	57 373	62 087	72 842
Public and personal services	250 360	260 081	273 669	288 091	244 698	250 134	256 757	257 516
Public administration, etc.	68 751	71 519	75 122	79 484	67 217	68 179	69 573	69 559
Education	50 034	52 095	55 163	58 874	48 872	49 726	51 039	51 274
Health-care activities	40 199	41 985	44 800	45 594	39 181	39 915	41 860	41 903
Social institutions, etc.	52 786	54 775	57 412	60 335	51 513	53 094	54 661	54 977
Refuse collection, associations and recreation activities, etc.	38 589	39 707	41 171	43 803	37 915	39 219	39 623	39 803
Financial intermediation services indirectly measured	-31 212	-30 984	-32 400	-35 035	-32 597	-31 128	-31 461	-32 503

Table 376

Compensation of employees and gross operating surplus and mixed income, by kind of activity 1996-1999

	Compensation of employees				Gross operating surplus and mixed income			
	1996	1997*	1998*	1999*	1996	1997*	1998*	1999*
	DKK mio.							
Total	560 676	587 905	620 721	653 257	351 503	362 644	365 258	381 639
Of which: General government	183 869	191 310	202 087	210 387	25 280	25 796	25 885	26 019
Agriculture, fishing and quarrying	8 358	8 747	9 003	9 333	37 379	39 498	30 571	34 382
Agriculture, horticulture, and forestry	6 386	6 650	6 896	7 093	25 635	24 451	20 672	20 627
Fishing, etc.	950	1 061	1 071	993	1 313	1 678	1 607	1 833
Mining and quarrying	1 021	1 036	1 037	1 247	10 431	13 369	8 292	11 922
Manufacturing	108 627	112 601	116 314	119 213	48 102	48 232	54 220	52 790
Manufacture of food, beverages, and tobacco	18 146	18 307	18 695	19 106	9 536	9 416	12 156	9 280
Manufacture of textiles, clothing, and leather	3 464	3 391	3 368	3 321	1 840	1 548	2 215	1 145
Manufacture of wood products, printing and publishing	16 147	16 715	17 186	18 114	5 025	4 947	6 314	5 911
Manufacture of mineral oils, chemicals and plastic	13 727	14 583	15 104	15 086	8 801	8 898	7 855	9 208
Manufacture of other non-metallic mineral products	4 673	4 892	5 160	5 679	2 695	2 385	2 091	1 735
Manufacture of basic metals and fabr. metal prod.	46 090	47 782	49 600	50 547	16 952	17 977	20 519	23 397
Manufacture of furniture and other industries	6 379	6 931	7 200	7 360	3 253	3 062	3 069	2 114
Energy and water supply	4 775	4 854	4 982	5 024	19 629	19 577	17 982	18 204
Construction	33 615	36 017	37 670	40 175	12 369	12 420	14 143	11 331
Wholesale/retail trade, hotels and restaurants, etc.	88 521	94 337	100 063	105 737	52 146	52 073	50 579	53 451
Sale and repair of motor vehicles, etc.	9 965	10 712	11 333	12 138	6 097	5 742	6 143	5 352
Wholesale and commission trade, except of motor vehicles	44 738	48 016	51 067	53 897	25 728	25 219	22 060	25 354
Retail trade and repair work, except of motor vehicles	24 472	25 864	27 198	28 594	13 555	13 788	14 774	15 156
Hotels and restaurants, etc.	9 345	9 745	10 465	11 108	6 767	7 324	7 602	7 589
Transport, storage and telecommunications	42 027	43 506	44 686	46 745	32 739	36 386	40 451	41 291
Transport	30 628	31 176	31 582	32 785	22 311	24 411	26 672	28 149
Postal services and telecommunications	11 398	12 331	13 104	13 960	10 428	11 975	13 779	13 141
Financial intermediation, etc., business activities	68 462	72 637	78 769	86 988	137 127	141 492	145 787	157 636
Financial intermediation and insurance	24 974	25 253	26 307	27 692	17 105	17 637	18 843	22 002
Real estate and renting activity	6 580	7 024	7 366	8 251	100 105	104 577	107 732	113 696
Business activities	36 907	40 361	45 096	51 044	19 918	19 278	19 212	21 938
Public and personal services	206 292	215 206	229 234	240 041	43 223	43 950	43 925	47 589
Public administration, etc.	54 738	56 957	60 530	63 357	13 529	13 988	14 180	15 702
Education	44 699	45 559	48 435	50 725	4 836	6 118	6 099	7 493
Health-care activities	33 244	34 395	37 328	39 097	6 508	7 159	7 189	6 212
Social institutions, etc.	48 290	52 122	55 181	57 793	4 060	2 111	2 014	2 325
Refuse collection, associations and recreation activities, etc.	25 322	26 173	27 761	29 070	14 291	14 574	14 444	15 857
Financial intermediation services indirectly measured (FISIM)	-	-	-	-	-31 212	-30 984	-32 400	-35 035

Table 377

**Total employed and wage and salary earners,
by kind of activity 1996-1999**

	Total employed ¹				Of which, wage and salary earners ¹			
	1996	1997*	1998*	1999*	1996	1997*	1998*	1999*
	Number of persons							
Total	2 572 654	2 603 979	2 658 717	2 680 814	2 361 295	2 397 262	2 455 219	2 479 798
Of which: General government	780 452	794 882	806 001	808 891	780 452	794 882	806 001	808 891
Agriculture, fishing and quarrying	113 535	109 786	106 658	104 698	47 593	47 322	46 794	46 983
Agriculture, horticulture, and forestry	104 235	100 875	98 042	95 467	40 940	41 075	40 793	40 296
Fishing, etc.	5 927	5 630	5 473	5 360	3 386	3 063	2 946	2 895
Mining and quarrying	3 373	3 281	3 143	3 871	3 267	3 184	3 055	3 792
Manufacturing	449 908	447 600	457 437	447 684	436 933	435 130	445 136	435 671
Manufacture of food, beverages, and tobacco	81 989	80 377	79 946	80 202	80 267	78 704	78 405	78 752
Manufacture of textiles, clothing and leather	18 875	17 189	17 039	16 211	17 400	15 823	15 508	14 660
Manufacture of wood products, printing and publishing	66 545	67 599	68 596	69 224	64 387	65 513	66 472	67 125
Manufacture of mineral oils, chemicals, plastic products	47 078	47 931	50 499	46 453	46 781	47 649	50 229	46 189
Manufacture of other non-metallic mineral products	19 567	19 585	20 538	21 524	18 874	18 919	19 824	20 809
Manufacture of basic metals and fabr. metal prod.	183 247	181 892	187 043	181 712	178 463	177 299	182 524	177 273
Manufacture of furniture and other industries	32 607	33 027	33 776	32 358	30 761	31 223	32 174	30 863
Energy and water supply	16 985	16 664	16 274	15 389	16 985	16 664	16 274	15 389
Construction	149 669	153 140	158 924	161 400	131 823	135 149	141 144	143 712
Wholesale/retail trade, hotels and restaurants, etc.	493 146	502 825	511 620	516 987	439 357	450 132	460 254	466 387
Sale and repair of motor vehicles, etc.	64 956	66 591	67 159	68 374	54 449	55 904	56 556	57 659
Wholesale and commission trade, except of motor vehicles	169 374	173 392	178 245	180 433	159 861	164 313	168 502	170 555
Retail trade and repair work, except of motor vehicles	184 020	186 285	185 930	186 416	159 309	162 396	164 030	165 667
Hotels and restaurants, etc.	74 796	76 557	80 286	81 764	65 738	67 519	71 166	72 506
Transport, storage and telecommunications	171 376	173 927	175 652	176 098	159 086	161 832	164 441	165 384
Transport	122 420	123 280	123 989	124 338	110 844	111 889	113 564	114 447
Postal services and telecommunications	48 956	50 647	51 663	51 760	48 242	49 943	50 877	50 937
Financial intermediation, etc., business activities	273 645	281 490	293 401	308 096	242 550	249 945	261 056	274 955
Financial intermediation and insurance	74 208	72 261	72 755	72 818	74 024	72 082	72 531	72 502
Real estate and renting activity	36 902	37 431	37 724	39 111	28 818	29 621	30 132	31 824
Business activities	162 535	171 798	182 922	196 167	139 708	148 242	158 393	170 629
Public and personal services	904 390	918 547	938 751	950 462	886 968	901 088	920 120	931 317
Public administration, etc.	203 955	196 991	201 203	203 596	203 929	196 969	201 188	203 584
Education	185 825	190 687	194 733	197 165	184 585	189 380	193 292	195 641
Health-care activities	147 389	147 135	151 411	153 750	141 406	141 121	144 115	145 868
Social institutions, etc.	244 103	257 885	263 332	266 587	244 103	257 885	263 332	266 587
Refuse collection, associations and recreation activities, etc.	123 118	125 849	128 072	129 364	112 945	115 733	118 193	119 637

¹Wage and salary earners temporarily on leave are not included.

Table 378

Private consumption expenditure 1996-1999

	Current prices				1995 prices			
	1996	1997*	1998*	1999*	1996	1997*	1998*	1999*
	DKK mio.							
Total private consumption expenditure	533 209	564 009	594 297	613 469	522 160	541 718	560 565	564 195
Consumption on Danish territory	525 329	553 828	581 226	598 472	514 949	533 007	550 824	554 084
Food	62 094	63 939	65 924	66 144	60 967	60 999	61 781	61 575
Beverages and tobacco	34 636	37 537	39 454	40 810	34 105	35 777	36 727	37 857
Clothing and footwear	26 678	28 094	29 246	30 050	26 445	27 711	28 756	29 126
Housing	112 617	116 585	121 314	125 955	109 727	110 806	111 905	113 023
Electricity, gas and other fuels	33 091	34 770	36 881	37 215	32 073	32 740	33 843	32 660
Furnishing, household equipment and operation	29 582	30 685	32 341	33 603	29 046	29 887	31 100	31 570
Medical products and health services	12 637	13 151	14 288	14 803	12 690	13 101	14 167	14 497
Purchase of vehicles	32 049	34 172	36 911	33 121	31 839	33 833	35 685	31 221
Other transport and communication	49 368	54 734	54 940	59 781	47 705	51 944	52 501	54 669
Recreation and culture	55 939	60 650	62 235	64 532	56 727	61 660	64 013	65 418
Other goods and services	76 638	79 512	87 691	92 458	73 625	74 550	80 347	82 467
Balance of tourism, net	- 596	1 112	3 192	4 086	- 953	242	923	866
Income from tourism	-20 223	-21 339	-22 204	-25 963	-19 783	-20 298	-20 886	-23 922
Expenditure on tourism	19 627	22 451	25 396	30 049	18 830	20 540	21 809	24 788
Membership organisations, etc.	8 477	9 069	9 879	10 912	8 163	8 470	8 817	9 244
Goods	280 505	293 313	306 640	309 960	277 093	285 685	296 681	294 273
Durable	63 076	66 020	70 483	67 383	64 503	68 245	73 710	70 610
Semi-durable	57 177	59 821	62 386	64 879	56 670	58 980	61 021	62 071
Non-durable	160 252	167 473	173 771	177 698	155 921	158 461	161 950	161 592
Services	244 824	260 515	274 586	288 511	237 856	247 322	254 143	259 811
Housing	112 617	116 585	121 314	125 955	109 727	110 806	111 905	113 023
Other services	132 207	143 930	153 272	162 556	128 129	136 516	142 238	146 788

Table 379

Gross capital formation 1996-1999

	Current prices				1995 prices			
	1996	1997*	1998*	1999*	1996	1997*	1998*	1999*
	DKK mio.							
Machines, equipment, and livestock	56 716	66 704	70 906	78 521	57 750	66 690	70 261	75 828
Transport	23 097	24 258	27 385	24 760	22 810	24 040	26 870	25 108
Buildings; facilities and installations	100 668	107 735	114 534	110 896	97 525	101 954	106 302	100 473
Housing	42 583	47 073	50 166	52 032	41 968	45 605	47 837	48 418
Other buildings	30 402	33 973	36 884	37 141	28 984	31 685	33 738	33 055
Civil engineering works	27 683	26 690	27 484	21 722	26 572	24 663	24 728	19 000
Livestock	99	4	-6	6	79	-29	-4	5
Valuables, net	1 580	1 969	1 605	1 612	1 645	1 948	1 612	1 610
Purchased and own-account computer software	14 535	15 278	19 528	23 506	15 328	15 956	19 676	22 579
Entertainment, literary and artistic originals	1 246	1 682	1 304	1 319	1 225	1 578	1 192	1 177
Mineral exploration	459	387	1 009	715	438	322	752	518
Gross fixed capital formation	198 400	218 017	236 265	241 334	196 799	212 458	226 661	227 298
Of which: Investment in General Government	20 366	20 498	19 558	20 093	-	-	-	-
+ Change in stocks, net	2 484	6 512	10 867	-3 011	1 602	6 581	10 171	-2 809
Gross capital formation	200 884	224 529	247 132	238 323	198 400	219 040	236 832	224 488
- Consumption of fixed capital	158 799	168 918	170 807	170 370	157 061	166 251	171 329	176 569
Net capital formation	42 085	55 611	76 325	67 954	41 339	52 789	65 503	47 919

Table 380

Supply and demand 1996

Section code	Danish turnover	Imports, incl. customs duties	Exports	Domestic supply	Used for			
					Inter-mediate consumption	Household consumption	Government consumption	Capital formation, stocks
DKK mio.								
0 Food and live animals	142 372	27 415	62 216	107 571	76 816	29 704	0	1 051
00 Live animals other than animals of division 03	22 078	168	698	21 548	21 376	49	0	122
01 Meat and meat preparations	34 606	2 708	23 502	13 812	5 847	7 936	0	30
02 Dairy products and birds' eggs	30 290	1 610	10 716	21 184	15 667	5 276	0	241
03 Fish (not marine mammals), crustaceans, molluscs, and aquatic invertebrates preparations and preparations thereof	11 629	7 592	11 079	8 142	7 355	775	0	12
04 Cereals and cereals preparations	16 898	2 010	6 213	12 695	9 008	3 272	0	415
05 Vegetables and fruit	7 680	4 147	1 325	10 502	5 205	5 197	0	100
06 Sugars, sugar preparations and honey	4 647	1 240	2 057	3 830	2 389	1 371	0	69
07 Coffee, tea, cocoa, spices and manufactures thereof	1 296	2 300	617	2 979	852	2 054	0	74
08 Feeding stuff for animals (not including unmilled cereals)	6 373	4 499	2 806	8 066	6 963	1 098	0	4
09 Miscellaneous edible products and preparations	6 876	1 142	3 204	4 815	2 153	2 676	0	-14
1 Beverages and tobacco	10 223	3 773	3 009	10 987	3 169	7 835	0	-17
11 Beverages	7 759	3 047	1 986	8 820	2 535	6 231	0	54
12 Tobacco and tobacco manufactures	2 464	725	1 022	2 167	634	1 604	0	-71
2 Crude materials, inedible, except fuels	15 754	9 767	9 860	15 661	14 596	1 771	0	-705
21 Hides, skins and furskins, raw	2 361	762	2 324	800	835	0	0	-36
22 Oil seeds and oleaginous fruit	627	652	118	1 161	1 142	5	0	14
23 Crude rubber (including synthetic and reclaimed)	3	193	12	184	181	0	0	2
24 Cork and wood	2 353	3 804	589	5 568	5 239	327	0	2
25 Pulp and waste paper	155	226	151	231	205	0	0	26
26 Textile fibres (other than wool tops and other combed wool) and their wastes (not manufactured into yarn or fabric)	663	319	529	453	432	10	0	10
27 Crude fertilisers other than those of division 56, and crude minerals (excluding coal, petroleum and precious stones)	2 046	1 100	571	2 575	2 482	112	0	-18
28 Metalliferous ores and metal scrap	209	454	655	8	733	-33	0	-692
29 Crude animals and vegetable materials, n.e.s.	7 336	2 257	4 912	4 681	3 346	1 350	0	-15
3 Mineral fuels, lubricants and related materials	50 028	15 201	14 786	50 442	39 162	11 508	0	-227
32 Coal, coke and briquettes	130	2 888	57	2 960	3 458	26	0	-524
33 Petroleum, petroleum products and related materials	22 687	11 780	10 312	24 155	20 159	3 865	0	131
34 Gas, natural and manufactured	11 213	30	1 197	10 046	7 477	2 403	0	166
35 Electric current	15 999	503	3 220	13 282	8 068	5 214	0	0
4 Animal and vegetable oils, fats and waxes	2 514	1 538	1 328	2 725	2 721	125	0	-121
41 Animal oils and fats	822	225	510	537	496	40	0	2
42 Fixed vegetable fats and oils, crude, refined or fractionated	834	906	421	1 318	1 345	56	0	-83
43 Animal or vegetable fats and oils, processed; waxes of animal or vegetable origin, inedible mixtures or preparations of animal or vegetable fats and oils, n.e.s.	859	407	397	869	880	29	0	-40
5 Chemicals and related products, n.e.s.	38 672	28 503	28 568	38 607	33 473	3 793	1 609	-268
51 Organic chemicals	4 454	3 144	4 053	3 545	3 650	26	0	-131
52 Inorganic chemicals	775	1 804	291	2 287	2 312	25	0	-49
53 Dyeing, tanning and colouring materials	4 211	2 507	2 642	4 077	3 993	74	0	9
54 Medical and pharmaceutical products	13 952	5 214	12 964	6 202	2 991	1 469	1 609	133

55	Essential oils and resinoids and perfume materials; toilet, polishing and cleaning preparations	2 397	2 847	1 533	3 712	1 849	1 811	0	51
56	Fertilisers (other than those of group 272)	1 406	1 037	368	2 076	2 036	40	0	0
57	Plastics in primary forms	873	5 376	698	5 550	6 078	2	0	-531
58	Plastics in non-primary forms	4 661	3 285	2 346	5 600	5 335	79	0	186
59	Chemical materials and products, n.e.s.	5 944	3 289	3 674	5 559	5 229	266	0	64
6	Manufactured goods classified chiefly by material	67 631	45 765	30 282	83 114	76 197	4 521	226	2 170
61	Leather, leather manufactures, n.e.s. and dressed furskins	247	465	229	483	417	61	0	5
62	Rubber manufactures, n.e.s.	1 479	2 299	1 084	2 694	2 379	109	0	206
63	Cork and wood manufactures (excluding furniture)	8 619	2 430	3 516	7 533	6 791	513	0	229
64	Paper, paperboard and articles of paper pulp, of paper or of paperboard	9 005	9 059	3 310	14 755	13 629	888	226	11
65	Textile yarn, fabrics, made-up articles, n.e.s., and related products	5 828	6 765	4 974	7 619	5 776	1 409	0	434
66	Non-metallic mineral manufactures, n.e.s.	13 797	3 616	4 660	12 753	11 994	614	0	145
67	Iron and steel	5 171	8 484	3 639	10 016	10 602	1	0	-586
68	Non-ferrous metals	1 961	4 040	1 375	4 626	4 583	2	0	41
69	Manufactures of metal, n.e.s.	21 524	8 608	7 495	22 637	20 026	926	0	1 685
7	Machinery and transport equipment	87 451	91 012	69 968	108 495	46 438	19 180	184	42 694
71	Power generating machinery and equipment	8 402	4 615	6 386	6 631	5 555	79	0	997
72	Machinery specialized for particular industries	11 817	8 502	10 285	10 033	3 329	149	0	6 555
73	Metal working machinery	1 112	1 436	889	1 658	553	0	0	1 106
74	General industrial machinery and equipment, n.e.s. and machine parts, n.e.s.	27 236	11 539	18 675	20 099	12 789	131	0	7 178
75	Office machines; automatic data processing machines	1 390	14 916	4 838	11 467	1 775	1 651	0	8 041
76	Telecommunications and sound recording and reproducing apparatus and equipment	7 979	10 845	8 423	10 401	5 019	2 899	0	2 483
77	Electrical machinery, apparatus and appliances, n.e.s. and electrical parts thereof (including non-electrical counterparts n.e.s. of electrical household type equipment)	13 487	12 944	8 254	18 177	13 009	2 595	0	2 573
78	Road vehicles (including air-cushion vehicles)	7 009	21 616	5 551	23 074	3 906	11 302	184	7 682
79	Other transport equipment	9 020	4 600	6 666	6 954	501	374	0	6 080
8	Miscellaneous manufactured articles	74 684	37 388	45 407	66 665	34 870	21 702	523	9 569
81	Prefabricated buildings, sanitary plumbing, heating and lighting fixtures and fittings, n.e.s.	3 828	1 459	1 821	3 465	1 893	629	15	927
82	Furniture and parts thereof; bedding, mattresses, mattress supports, cushions and similar stuffed furnishings	17 269	3 115	11 824	8 559	1 687	3 060	63	3 749
83	Travel goods, handbags and similar containers	99	582	168	512	55	418	0	39
84	Articles of apparel and clothing accessories	6 981	12 430	8 837	10 574	1 053	9 331	0	190
85	Footwear	1 619	2 616	1 380	2 856	997	1 705	0	154
87	Professional, scientific and controlling instruments and apparatus n.e.s.	7 744	3 881	6 038	5 587	3 602	123	9	1 853
88	Photographic apparatus, equipment and supplies and optical goods, n.e.s.; watches and clocks	2 917	2 415	1 766	3 567	2 362	740	25	440
89	Miscellaneous manufactured articles, n.e.s.	34 227	10 891	13 573	31 545	23 221	5 696	411	2 216
9	Commodities and transactions not classified elsewhere in SITC	0	1 317	101	1 216	1 281	-65	0	0
93	Special transactions and commodities not classified according to kind	0	1 212	75	1 137	1 137	0	0	0
96	Coin (other than gold coin) not being legal tender	0	3	0	3	0	3	0	0
97	Gold, non-monetary (excluding gold ores and concentrates)	0	102	26	76	144	-68	0	0

Table 381

Gross domestic product by counties 1998

	Gross domestic product in DKK bn.	Gross domestic product per capita in DKK 1000	Gross domestic product per capita, index the whole country = 100	Annual average real growth in pct. 1993-1997*
	current prices			
Whole country	1 163 820	219.4	100	3.3
Copenhagen and Frederiksberg Municipalities	210 424	366.8	167	2.9
Copenhagen County	166 528	275.2	125	4.1
Frederiksborg County	61 781	172.6	79	4.5
Roskilde County	35 029	154.5	70	4.9
West Zealand County	52 494	181.0	82	2.1
Storstrøm County	39 602	154.7	71	3.1
Bornholm County	7 234	164.0	75	1.8
Funen County	87 177	186.6	85	3.0
South Jutland County	51 100	203.4	93	3.6
Ribe County	47 403	213.7	97	2.6
Vejle County	68 710	201.0	92	2.9
Ringkøbing County	59 537	220.8	101	3.5
Århus County	123 948	197.8	90	3.1
Viborg County	46 636	201.9	92	3.0
North Jutland County	94 585	193.6	88	2.5
Outside Denmark	11 631	•	•	8.8

Table 382

Input-output table 1996

	Input in main groups of industries									Total
	Agriculture, fishing, and quarrying	Manufacturing	Energy and water supply	Construction	Wholesale/retail trade, hotels and restaurants, etc.	Transport, storage and telecommunications	Financial intermediation, etc., business activities	Public and personal services	Financial intermediation services indirectly measured, FISIM	
	DKK mio. in current prices									
Agriculture, fishing, and quarrying.	10 424	45 410	3 140	1 394	281	17	63	570	-	61 299
Manufacturing	7 518	76 014	625	29 430	13 433	5 497	12 070	9 312	-	153 899
Energy and water supply	1 078	5 472	2 128	141	2 807	705	985	3 481	-	16 797
Construction	1 213	1 857	2 241	1 546	1 499	2 871	14 096	5 794	-	31 117
Wholesale/retail trade, hotels and restaurants, etc.	4 902	27 301	286	13 365	11 253	7 200	3 567	6 815	-	74 688
Transport, storage and telecommunications	1 753	12 220	247	2 546	21 762	22 275	9 073	12 922	-	82 798
Financial intermediation, etc., business activities	3 525	18 869	1 236	16 293	26 596	7 279	33 616	20 175	31 212	158 802
Public and personal services	1 132	4 985	409	1 557	4 188	2 096	6 314	16 942	-	37 625
Total of Danish industries	31 545	192 127	10 313	66 272	81 820	47 941	79 784	76 011	31 212	617 025
Imports incl. customs duties	7 269	92 335	3 910	13 256	12 445	36 234	4 724	11 334	-	181 507
Taxes on products, net and VAT	-1 426	682	86	859	3 637	3 435	8 853	14 064	-	30 189
Uses at market prices	37 388	285 144	14 309	80 386	97 902	87 610	93 362	101 409	31 212	828 722
Other taxes linked to production, net.	-1 173	-2 191	19	- 253	- 369	-1 538	2 321	844	-	-2 342
Compensation of employees	8 358	108 627	4 775	33 615	88 521	42 027	68 462	206 292	-	560 676
Gross operating surplus and mixed income	37 379	48 103	19 629	12 369	52 146	32 739	137 127	43 223	-31 212	351 503
Gross output at basic values	81 952	439 682	38 731	126 117	238 200	160 838	301 272	351 768	-	1 738 559

Table 382 (continued)

	Final demand						Exports	Total	Total
	Private consumption	Government consumption	Gross fixed capital formation			Increase in stocks			
			Machinery and transport equipment	Building and construction	Other capital formations				
	DKK mio. in current prices								
Agriculture, fishing, and quarrying.	3 166	1 087	14	-	475	426	15 485	20 653	81 952
Manufacturing	49 572	803	23 874	-	1 451	1 843	208 239	285 782	439 682
Energy and water supply	17 634	-	-	-	60	142	4 099	21 935	38 731
Construction	5 305	6 440	83	83 153	19	-	-	95 000	126 117
Wholesale/retail trade, hotels and restaurants, etc.	110 800	1 899	15 746	-	1 639	141	33 286	163 512	238 200
Transport, storage and telecommunications	24 269	909	4	-	676	-	52 182	78 040	160 838
Financial intermediation, etc., business activities	117 110	3 467	1 879	4 397	9 268	-	6 349	142 470	301 272
Public and personal services	53 399	256 920	4	113	2 396	-0	1 311	314 143	351 768
Total of Danish industries	381 254	271 525	41 604	87 663	15 984	2 552	320 952	1 121 534	1 738 559
Imports incl. custom duties	70 898	1 763	30 331	-	1 699	56	42 818	147 566	329 073
Income from tourists	-20 223	-	-	-	-	-	20 223	-	-
Taxes on products, net. and VAT	101 280	1 274	7 878	13 005	236	- 124	-4 580	118 969	149 159

Use at market prices	533 209	274 562	79 813	100 668	17 919	2 484	379 413	1 388 069	2 216 791
----------------------	---------	---------	--------	---------	--------	-------	---------	-----------	-----------

Table 383

Balance of payments 1997-1999

	1997*	1998*	1999*
	DDK mio.		
Current receipts, total	516 719	515 216	540 117
Export of goods (fob)	318 251	320 447	345 850
Services	94 289	101 650	110 582
Sea transport	46 547	48 849	47 975
Travel	21 022	21 655	25 156
Other services	26 721	31 146	37 452
Compensation of employees	5 323	5 131	5 203
Investment income	75 091	64 721	54 813
Current transfers from EU	10 092	10 053	10 922
Other current transfers	13 673	13 215	12 746
Current expenditure, total	510 531	528 121	525 033
Import of goods (fob)	280 414	294 578	299 947
Services	92 650	105 411	106 142
Sea transport	45 388	47 017	44 939
Travel	27 782	30 616	34 075
Other services	19 480	27 778	27 128
Compensation of employees	2 444	2 340	4 842
Investment income	102 682	92 784	75 393
Current transfers to EU	11 912	13 435	12 976
Other current transfers	20 428	19 574	25 734
Surplus on current accounts	6 188	-12 905	15 083
+ Capital transfers, etc. from abroad, net	736	331	873
Net lending	6 923	-12 574	15 957
+ Financial transactions, net from abroad	36 094	-16 606	48 281
Change in Danmarks Nationalbank reserve assets	43 017	-29 180	64 238

Table 384

Balance of payments and foreign debt 1960-1999

	Goods and services, net ¹	Investment income, net ¹	Balance of payments current account, net ¹		Net foreign liabilities at end of year ²		
	DKK mio.	DKK mio.	DKK mio.	As percentage of gross domestic product	DKK mio.	As percentage of gross domestic product	Per capita in DKK
1960	- 458	33	- 407	- 1.0	417	1.0	90
1965	- 1 129	- 89	- 1 218	- 1.7	4 501	6.4	942
1970	- 3 452	- 334	- 4 077	- 3.4	14 929	12.6	3 016
1975	- 1 800	- 1 866	- 3 176	- 1.5	26 818	12.4	5 294
1980	- 4 090	- 9 580	- 13 400	- 3.6	99 700	26.7	19 457
1985	- 533	- 27 045	- 28 833	- 4.7	243 500	39.6	47 593
1990	43 619	- 34 791	7 020	0.9	282 000	34.2	54 795
1992	60 169	-33 792	22 896	2.6	312 000	35.1	60 225
1993	62 796	- 30 839	29 282	3.3	291 000	32.3	55 998
1994	51 528	- 29 047	17 665	1.8	259 000	26.8	49 658
1995	41 052	- 26 107	10 020	1.0	266 000	26.3	50 657
1996	52 300	- 26 110	18 722	1.8	253 000	23.8	47 961
1997*	39 476	- 27 591	6 188	0.6	285 000	25.6	53 826
1998*	22 108	- 28 063	- 12 905	- 1.1	300 000	25.8	56 459
1999*	50 343	- 20 580	15 083	1.2	175 000	14.4	32 833

¹ Figures for 1988 and onwards changed in accordance with the IMF fifth Balance of Payments Manual. ² From 1991 and onwards figures are based on Danmarks Nationalbank's revised external debt figures.

Source (for liabilities): Danmarks Nationalbank

Table 385

Foreign debt 1997-1999

	1997	1998*	1999*
	DKK bn. at December 31		
INSTRUMENTS			
Assets, total	1 090	1 221	1 571
Direct investment	218	247	305
Abroad	209	231	289
In Denmark	9	16	16
Portfolio investment	333	398	592
Equity securities	152	208	358
Debt securities	181	190	234
Other investment	539	576	676
Loans, deposits, etc.	482	494	532
Other	57	82	144
Liabilities, total	1 375	1 521	1 746
Direct investment	178	224	276
Abroad	17	13	13
In Denmark	161	211	263
Portfolio investment	728	755	781
Equity securities	139	131	151
Debt securities	589	624	630
Other investment	469	542	689
Loans, deposits, etc.	445	501	577
Other	24	41	112
SECTORS			
Assets, total	1 090	1 221	1 571
Private, excluding banking sector	473	575	763
General government sector	35	45	72
Banks	451	500	569
Danmarks Nationalbank	131	102	168
Liabilities, total	1 375	1 521	1 746
Private, excluding banking sector	561	689	806
General government sector	413	376	341
Banks	400	455	597
Danmarks Nationalbank	1	1	2
Net liabilities, total (liabilities-assets)	285	300	175
Private, excluding banking sector	88	115	43
General government sector	378	331	269
Banks	- 51	- 45	28
Danmarks Nationalbank (reserve assets)	- 130	- 101	- 166

Source: Danmarks Nationalbank.