

National accounts and government finances

➤ Danish economy 2002 to 2012

➤ Financial claims

➤ Inflation

➤ International comparison of GDP

➤ Public sector

➤ General government sector

➤ Taxes and duties

➤ Distribution of tasks and burden

➤ Public expenditure in EU-27



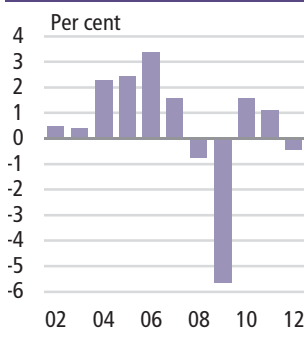


Danish economy 2002 to 2012

Economic decline in 2012

GDP decreased by 0.5 per cent in 2012. High growth rates in 2004-2007 was followed by negative growth in 2008 and a historical economic downturn by 5.7 per cent in 2009, before Danish Economy partially recovered in 2010 and 2011 – followed by a new economic decline in 2012.

Figure 1
Real growth in GDP



www.statbank.dk/nat02

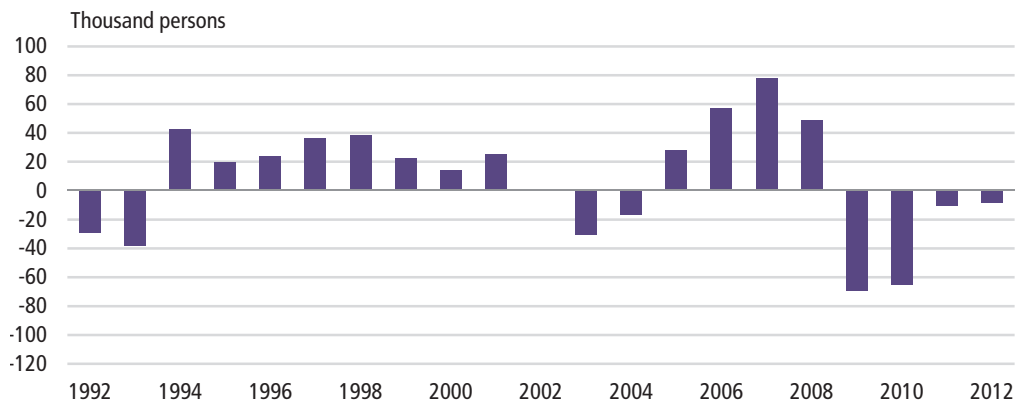
In comparison the real growth in GDP averaged 2.4 per cent from 2003 to 2007 which is the latest period with an economic upturn, while the growth rate in 2008 and 2009 was -3.3 per cent annually on average. Since the economic crisis in 2009 the average growth rate has been 0.7 per cent in 2010 to 2012.

Continued decrease in employment

The decrease in employment continued in 2012 with a drop of 9,000 persons (0.4 per cent). In 2012, the average number of persons employed was approximately 2,797,000. Of these, 39,000 persons were on leave.

Often, changes in employment are lagged compared to the economic growth. This was seen clearly in 2001, 2004 and in 2008 when the economic conditions changed.

Figure 2 Annual growth in employment



Note: Including persons on leave.

www.statbank.dk/nat18

The share of the workforce employed in goods-producing industries (agriculture, manufacturing, energy, and construction) has been continuously declining for several years. In 2002, 24.7 per cent was employed in the goods-producing industries, while in 2012 the proportion was 20.8 per cent. During the same period, employment increased, in particular in the private service industries (from 40.3 per cent in 2002 to 43.5 per cent in 2012). The percentage of persons employed in public and personal services was 35.1 per cent in 2002 and 35.7 per cent in 2012.



Increased demand from exports

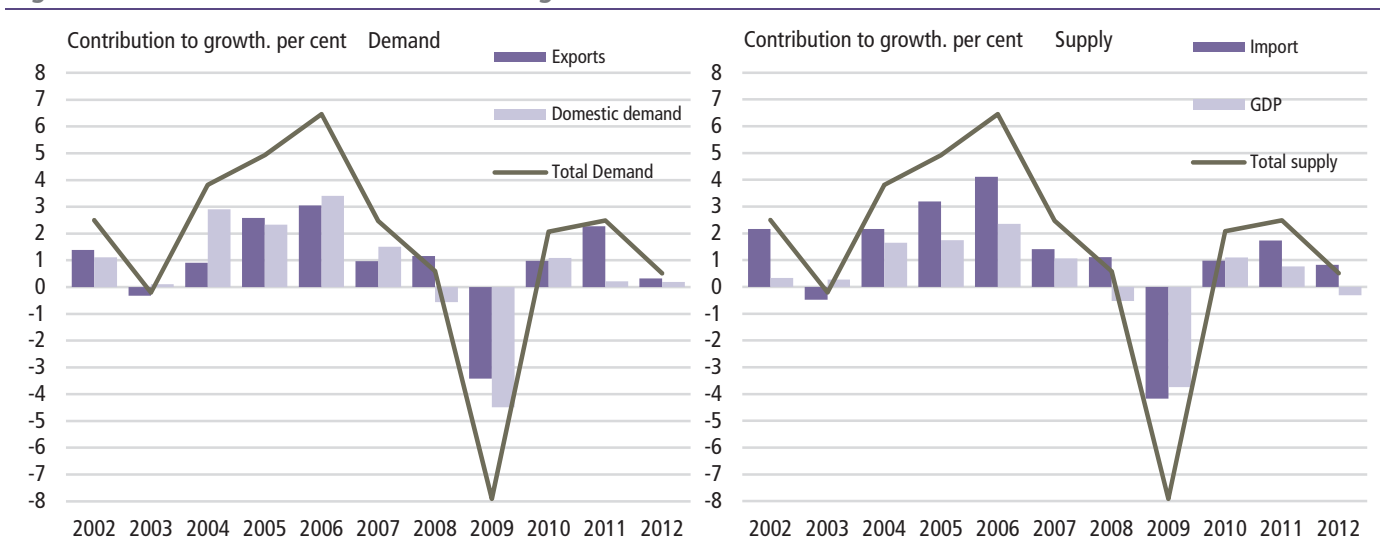
Total demand increased by 0.5 per cent in 2012. Hence, it continued the positive trend from 2010 and 2011. The development was caused by increases in export demand and in domestic demand. The increased demand was met with increases in both GDP and imports.

Total demand and total supply are by definition equal and change by the same rate. An increase in total demand is caused by an increase in exports or domestic demand. An increase in total supply originates from an increase in imports or domestic value added measured by GDP.

Periods with strong growth in demand often cause a similar growth in imports because, in the short run, GDP cannot expand sufficiently to meet the demand. This tendency can be seen in the period 2004-2006, where the contributions from imports to the growth in supply were large and increasing.

In 2008, where the decline in GDP began, there was a marginal increase in total demand, which consisted of an increase in exports and a decline in domestic demand. On the supply side the picture was the same – imports increased and GDP decreased. Large decreases in demand from both exports and domestic markets in 2009 contributed to a strong decline in total demand. This led to substantial decreases in supply from both imports and GDP.

Figure 3 Contribution to real annual growth in GDP



Increased foreign trade in 2012

After a considerable decline in 2009, the foreign trade partially recovered in 2010 with growth in exports as well as imports. This recovery continued and amplified in 2011 and the total volume of exports is now close to the 2008 level. This development was consolidated in 2012, however by a slower pace. In 2012, both imports and exports reached the same level as before the crisis.

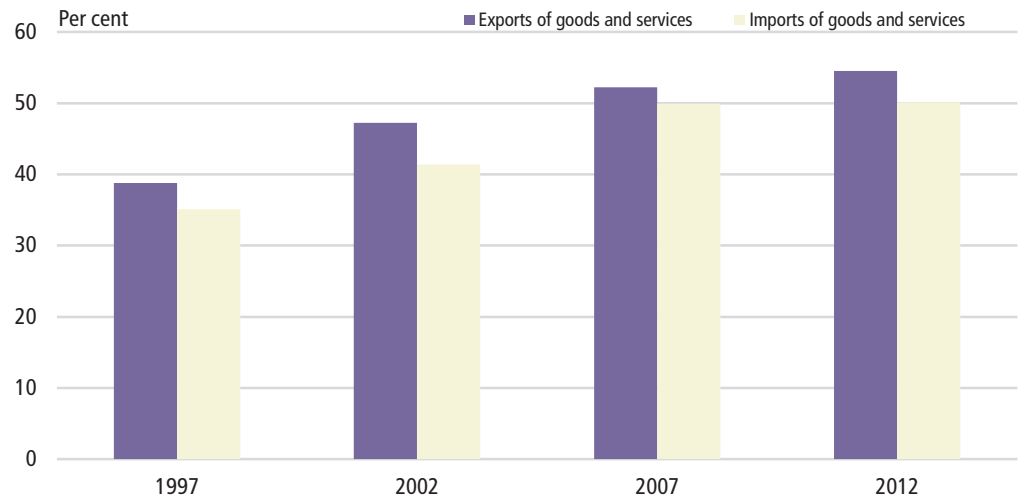
Viewed over a large number of years, external trade has increased considerably and makes up, today, a far greater share of valued added than was previously the case. As shares of GDP, imports and exports increased from making up less than 40 per cent in 1997 to more than 50 per cent in 2012. During the economic boom



from 2004 to 2007, especially imports saw a sharp increase, while exports made up more than 45 pct. of GDP already at the beginning of the economic boom.

Particularly, trade in services has increased steeply. The trade in services almost tripled since 1992, while trade in goods doubled in the same period of time. Trade in goods still constitutes the main part of total foreign trade.

Figure 4 Imports and exports as percentage of GDP, current prices

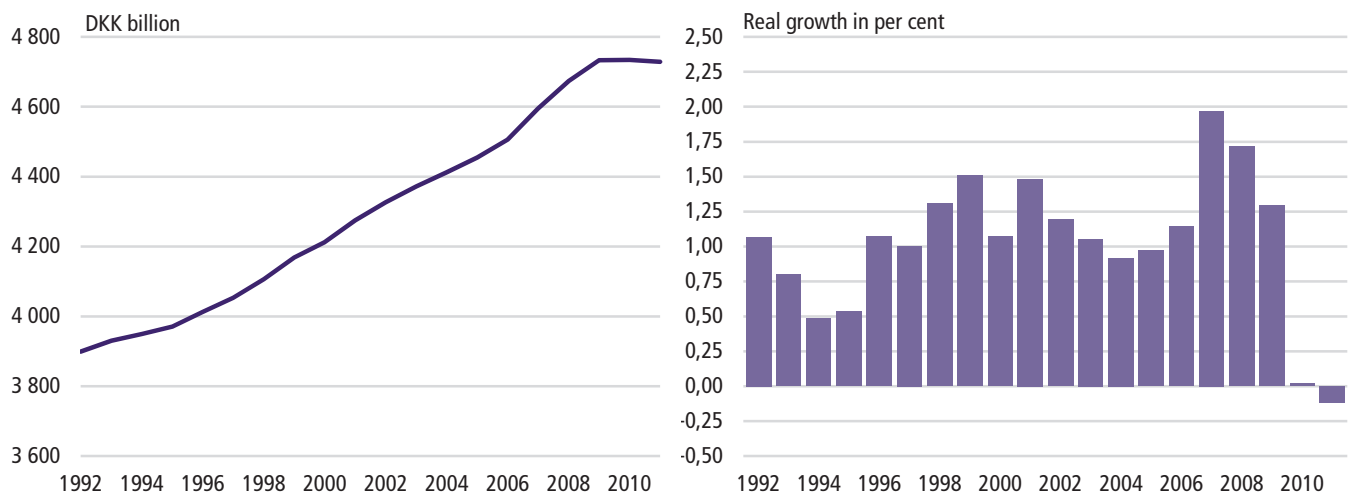


www.statbank.dk/nat01

The capital stock largely unchanged in 2011

The share of the national wealth that is held in the form of fixed assets (net capital stock) was on the whole unchanged in 2011. In earlier years, the net capital stock has been continuously increasing and grew by 12.4 per cent from 2000 to 2009, but remained largely unchanged in 2010 and 2011. The change in the net capital stock at current prices between two dates of compilation reflects net investment (gross fixed capital formation less consumption of fixed capital) and nominal revaluations during the period.

Figure 5 Net capital stock. 1992-2011



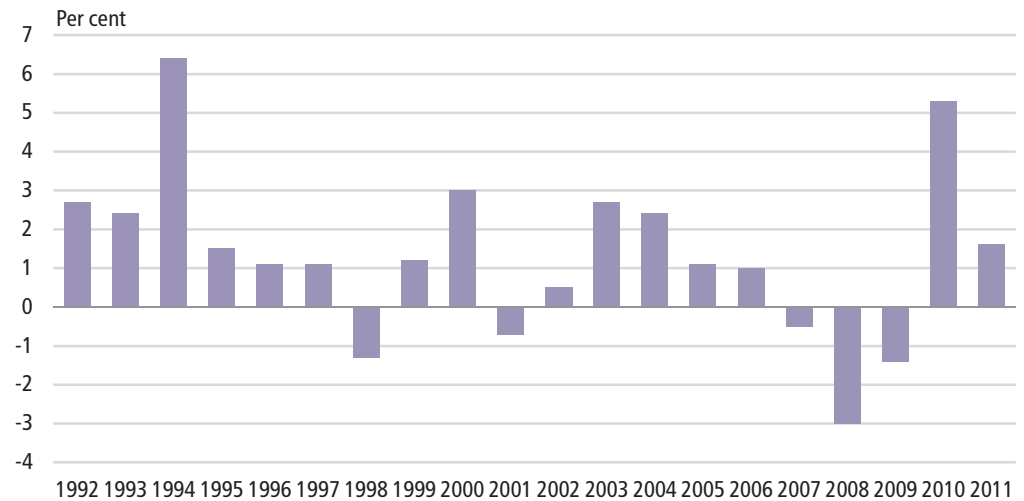
www.statbank.dk/nat08



Increase in productivity

Based on the figures from the Danish working time account, it is possible to calculate productivity per hour as the market gross value added per working hour. The productivity increased by 1.6 per cent in 2011 and continuing the positive trend from 2010, where productivity increased by 5.8 per cent after two years with decreasing productivity in 2008 and 2009 by 3.0 and 1.4 respectively. The productivity increased by an annual average of 0.8 per cent from 2000 to 2011.

Figure 6 Gross value added per hour at 2000 prices (chained). Annual growth rate



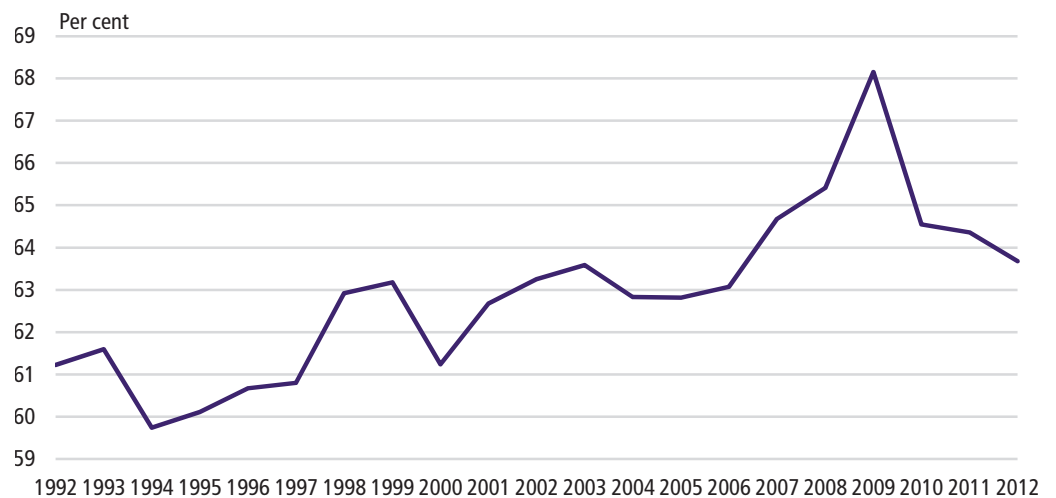
www.statbank.dk/nat23

Decreasing wage share

Total income from production comprises compensation of employees and enterprises' profits (gross operating surplus and mixed income). In 2010 the share of wages and salaries of total income decreased significantly and almost dropped to the level in 2007. It decreased further in 2011 and 2012.

From 1995 to 2006 the wage share increased slightly with a decline in 2000 and 2004.

From 2006 the wage share increased significantly and reached a peak level of 67.7 per cent in 2009 before decreasing to 64.6 per cent in 2010, 64.4 per cent in 2011 and 63.7 in 2012. The lowest level was in 2006.


Figure 7 The wage share


www.statbank.dk/nat01

Stable savings ratio after the economic crisis

The savings ratio of the Danish economy (i.e. savings as a percentage of gross national disposable income) increased steadily from 21.3 per cent in 1998 to 24.3 per cent in 2001. After 2001 the savings ratio has remained relatively constant up to and including 2008, reaching its highest level in 2006 where it was 25.7 per cent. In 2009 the savings ratio decreased to 21.0 per cent and has been growing to 22.6 per cent in 2010, 23.2 per cent in 2011 and 22.6 per cent in 2012.

Figure 8 Savings ratio, current prices


www.statbank.dk/nat01

Since 1999, Denmark's balance of payments has shown a surplus on the current account. Including capital transfers, there has also been positive net lending. There was a significant increase in net lending in 2010 and it is estimated at DKK 96.7 billion for 2012.



Financial claims

Rise in financial net equity of households

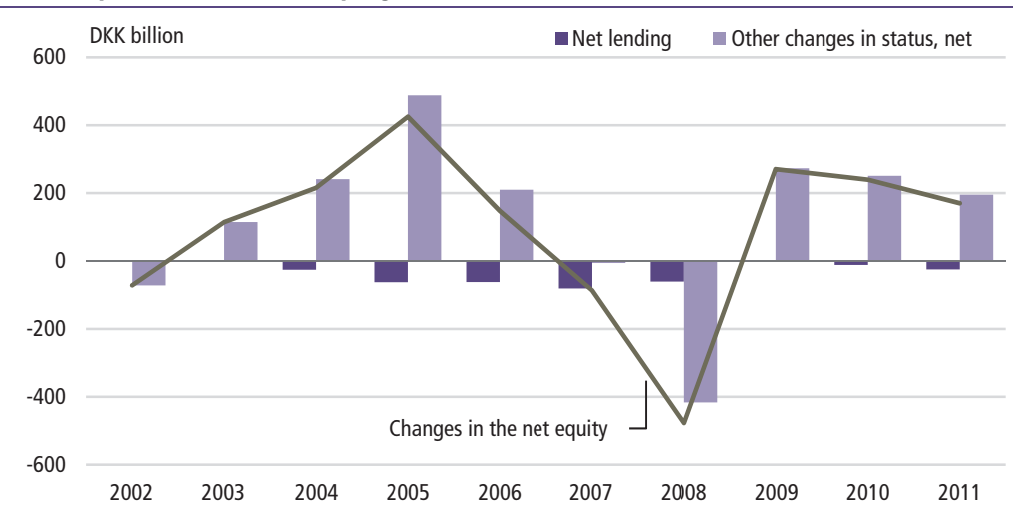
In 2011 the financial net equity of households continued rising after a decline in both 2007 and 2008.

The explanation can be found in the evolution of *other changes in status, net* where the development in the financial markets in 2009 to 2011 gave positive revaluations. In 2007 and 2008 net equity was affected by large negative revaluations.

Especially share price fluctuations have affected the households' net equity both directly and indirectly through their pension scheme savings in life insurance companies and pensions funds.

In addition to the household sector, the national accounts include financial accounts for three other main sectors: corporate sector (non-financial and financial corporations), general government sector, and the rest of the world. The financial claims consist of a number of financial assets and liabilities comprising, e.g., shares, bonds and loans. The difference between the total financial assets and the total financial liabilities constitute the financial net worth.

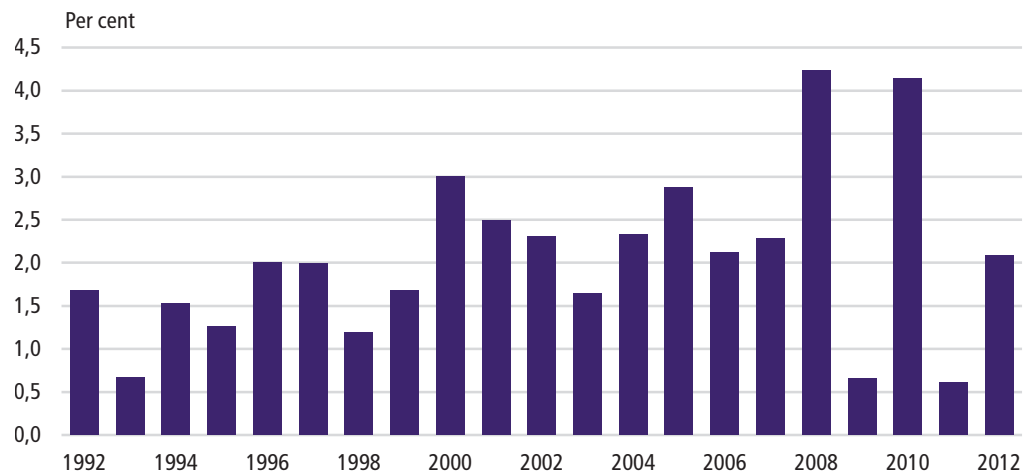
Figure 9 Development in the net equity of households



Inflation

Inflation at an average level in 2012

In 2012 the inflation (measured as the annual increase in the GDP deflator) in Denmark was 2.1 per cent. In recent years the inflation has fluctuated with high inflation rates in 2008 and 2010 and low inflation rates in 2009 and 2011. Between 1990 and 2007 the inflation was both low and stable. The average increase in annual prices in the period was 2.0 per cent, and only in 2000 and 2005 did the inflation reach 3 per cent. The average inflation rate since 2000 is 2.1 per cent.


Figure 10 Inflation measured as annual change in the GDP deflator


www.statbank.dk/nat01 and nat02

International comparison of GDP

Economic recovery in 2010

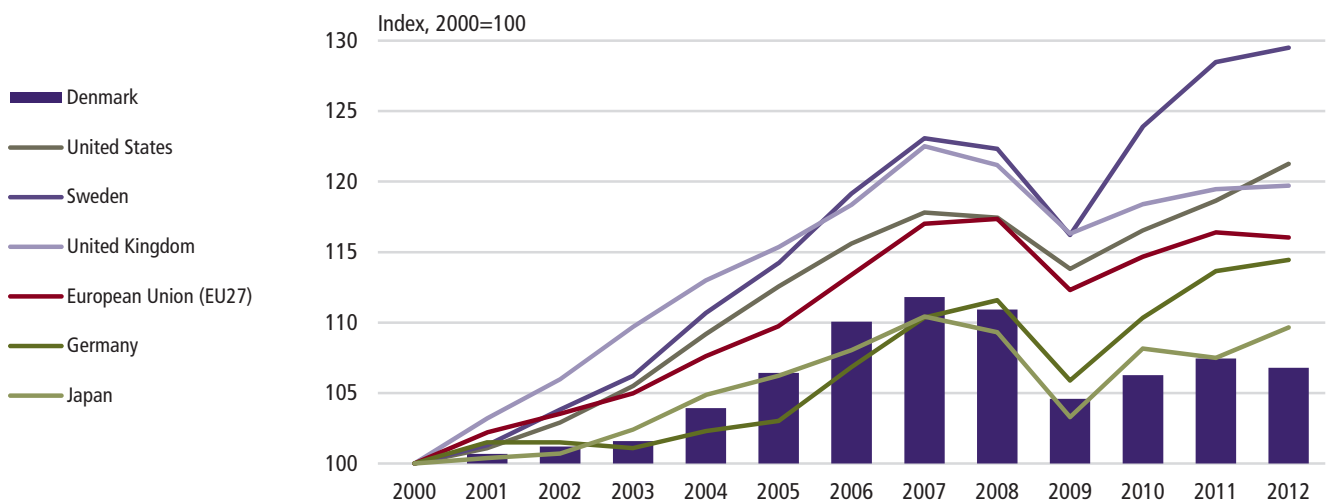
In 2009 the economic decline became global with a massive economic decline in many of the countries with significant importance for the economic development in Denmark.

In 2010 the countries with the greatest significance for the Danish economic development experienced partially economic recovery with increases in GDP. As in Denmark, the EU as a whole experienced slightly negative GDP growth in 2012.

The GDP growth in Great Britain, Sweden and Germany was moderate in comparison, while Japan and the United States experienced an economic increase of approximately 2 per cent. Germany, Sweden and the United States reached a level over 2007, where the crisis started.

Figure 11

GDP in selected countries, constant prices



Source: Eurostat, New Cronos.



Public sector

Composition of the public sector

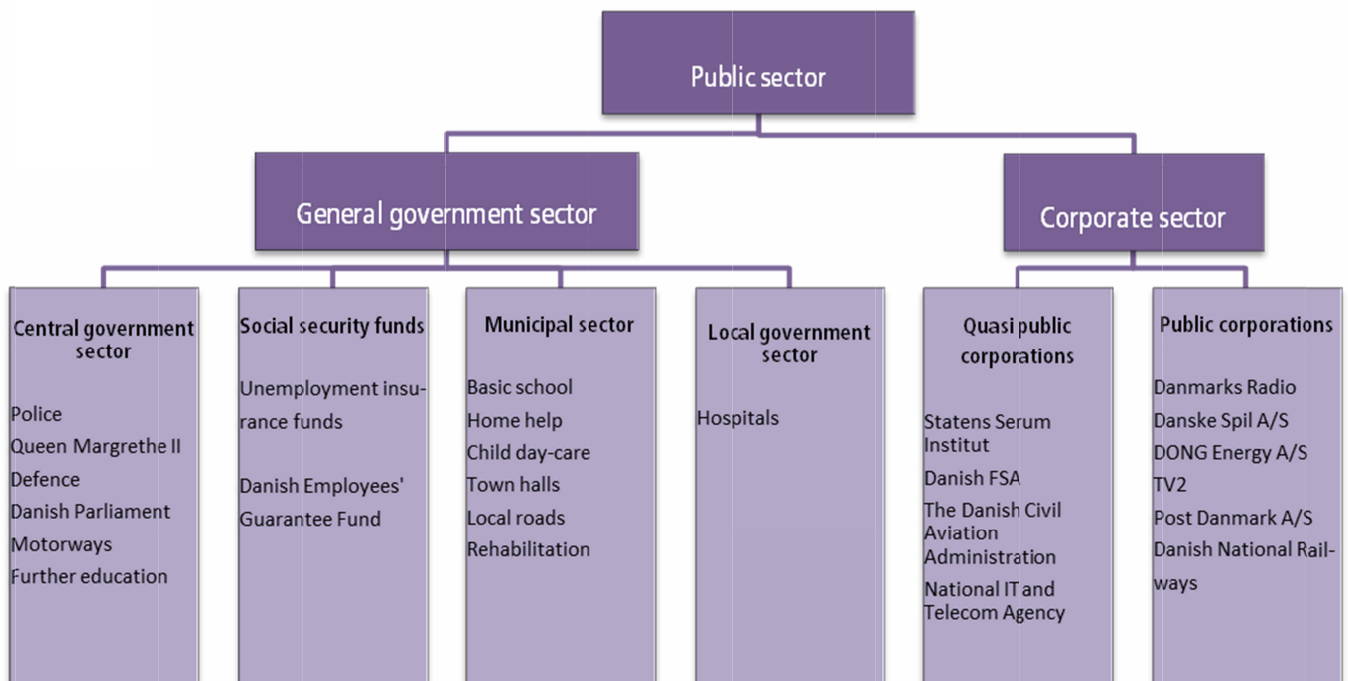
The public sector comprises the general government sector and public enterprises and public quasi corporations (corporate sector).

The general government sector produces non-market services that are primarily funded through taxes. These services are wholly or partially available to private households and enterprises (e.g. day-care institutions, education and hospitals).

The corporate sector is composed of institutions that are run commercially. The difference between public enterprises and public quasi corporations is that public quasi corporations are part of the public system of accounting whose accounts are integrated into state or regional accounts (e.g. municipal utility enterprises), while public corporations are organised as a company or similar according to civil law and are owned or controlled by public authorities (e.g. DONG Energy A/S and the Danish National Railways). This implies that the quasi corporations are 100 per cent controlled by the general government sector, while the public enterprises are controlled to a lesser extent.

In the following, a number of designations are used in describing the public area. It will be explicitly stated if the description also comprises the public corporate sector. Otherwise, figures only relate to the general government sector.

Figure 12 General government sector by areas





The structural reform of Danish municipalities 2007

The structural reform of Danish municipalities came into force on 1 January 2007 and gave rise to major changes in the public sector. The reform consists of three main elements: A new municipal map of Denmark, a new distribution of tasks and a reform of financing and monetary equalization.

The changes in the municipal structure implied that the number of municipalities was reduced from 271 to 98. In addition to this, the counties were abolished and 5 regions were established.

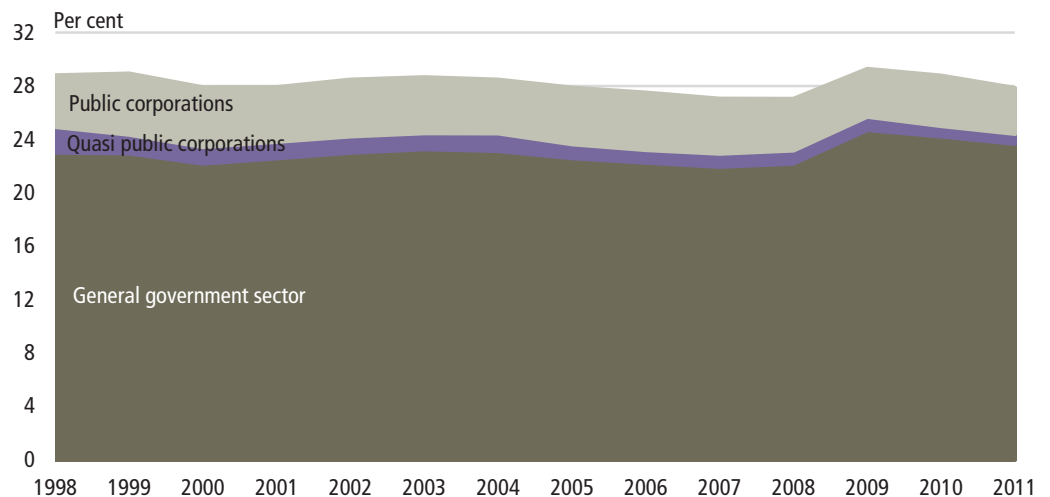
There was at the same time a change in the distribution of tasks between the central government, region and local government. For example, the responsibility of most tasks related to nature and the environment was transferred from the counties to the municipalities, while the general government sector became responsible for, among other tasks, further education, which was transferred from the counties.

Similarly, the redistribution of tasks among the sectors has resulted in an adjustment of the municipal system of monetary equalization reflecting the distribution of the new tasks. Hospitals are to be co-funded by the municipalities.

The size of the public sector has remained constant since 1993

Since 1993, compared with the total Danish economy, the size of the public sector has remained constant between 27 and 30 per cent of gross domestic product at factor cost, GDP.

Figure 13 GDP at factor cost for the public sector as a percentage of GDP at total factor cost for the total Danish economy



www.statbank.dk/nat01 and off14

Compensation of employees in the public sector accounts for about one third of total wages and salaries paid to employees in the Danish economy, while investments have ranged around 13-19 per cent of total investments in the Danish economy since 1999. Institutions under the general government sector accounts for about 90 per cent of expenditure on wages and salaries, while they since 2006 has



accounted for about 2/3 of investments. Previously, investments have been more evenly distributed between market units and the general government sector. In recent years a number of privatisations within the public corporate sector have been implemented. This has reduced the size of the public sector.

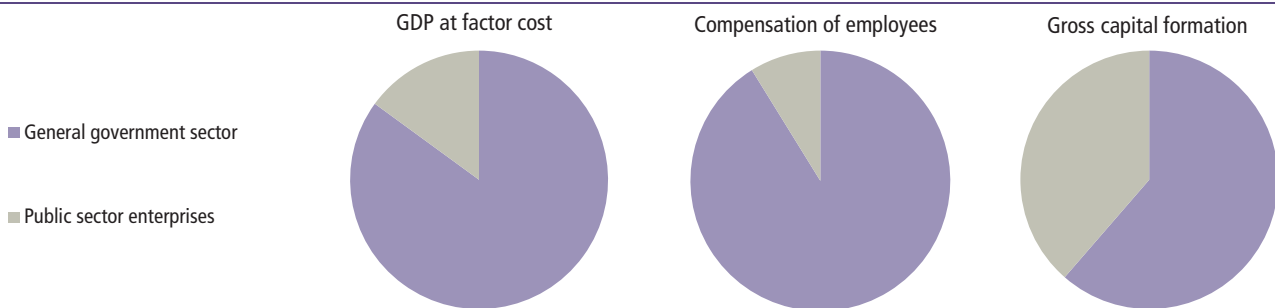
TDC A/S is an example of a company that has shifted status from public corporation to private enterprise, and consequently the company is no longer part of the public sector.

One sixth of the public sector's GDP were created by private corporations

15 per cent of the public sector's GDP at factor costs were created by public corporations in 2011, but only 9 per cent of total wage and salary costs were paid by the public corporations. At the same time, the public corporations account for 39 per cent of total gross capital formation of the public sector.

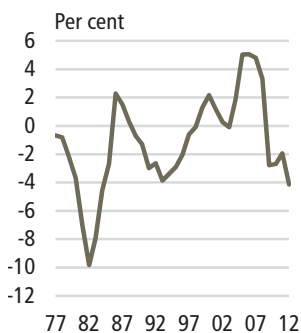
Figure 14

The public sector divided into general gov. sector and public enterprises. 2011



www.statbank.dk/off14

Figure 15
Public sector surplus (net lending) as a percentage of GDP



www.statbank.dk/nat01, off3 and 16

Deficit on public finances since 2009

The years since 2009 have shown a deficit on public finances. In the 10 years previously between 1999 and 2008, there had been a surplus on public finances, except for a small deficit in 2003

The years between 1975 and 1998 were primarily influenced by a deficit on public finances, except for the period between 1986 and 1987 which saw a short period of economic recovery.

Changes in the economic business cycle have a significant influence on public finances. Periods of economic recovery reduce the costs of unemployment benefits and simultaneously increase revenue from taxes and duties. The opposite applies in periods of recession.

Public net worth turned to net debt in 2011

A surplus or a deficit on public finances impacts the public debt. The size of net debt is significant to the future economic development by having an impact on the fiscal-policy scope in the future.

In 2011 the public net worth was turned to a net debt of 3.5 per cent of GDP. In 2012 the public net debt was 7 per cent of GDP.

In the years between 1995, when the statistics of public net debt was introduced, and 2006, the general government sector had a net debt that peaked in 1998 at



35.1 per cent of GDP. Public net debt was then declining until 2007, where it turned to a net worth, which further increased until 2008 where it peaked at 6.1 per cent of GDP. Public net worth has then been declining, leading to public net worth again was turned to net debt in 2011.

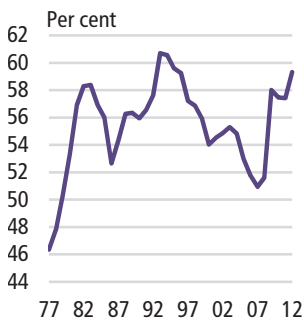
General government sector

Public expenditure stable since 2009

The size of the general government sector is decided politically and depends on economic and social structure conditions. The expansion of, e.g. education, social conditions and hospitals in the 1970s gave rise to a sharp growth of the public sector. Furthermore, women's participation in the labour market resulted in an increasing demand for child care.

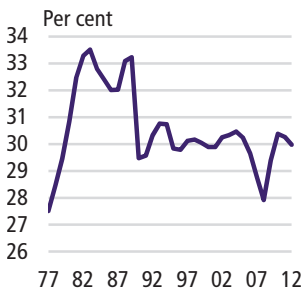
The increase in the proportion of current and capital expenditure of GDP peaked in 1993. Between 1993 and 2008, there has been a tendency towards a fall in the proportion of current and capital expenditure of GDP. In 2009 the proportion of current and capital expenditure of GDP increased and now accounts for 57.9 per cent of GDP. The level is nearly unchanged in both 2010 and 2011, where the proportion of current and capital expenditure was 57.6 per cent and 57.7 per cent of GDP, respectively. In 2012 the proportion of current and capital expenditure was 59.3 per cent of GDP.

Figure 16
Current and capital expenditure as a percentage of GDP



www.statbank.dk/nat01,off3
and 16

Figure 17
Employment in the general government sector as a percentage of total employment



www.statbank.dk/nat18n,nat18
and nat18x

Stagnation in the number employed by the public sector since 1993

The most important factor of production in connection with public production is labour (e.g. teachers, doctors and employees in public administration). About 2/3 of general government consumption comprise wages and salaries. In 1970, the number employed by the general government sector amounted to 21.2 per cent of the total number employed. In 1993, this proportion had increased to about 30.8 per cent, but has since then remained largely constant.

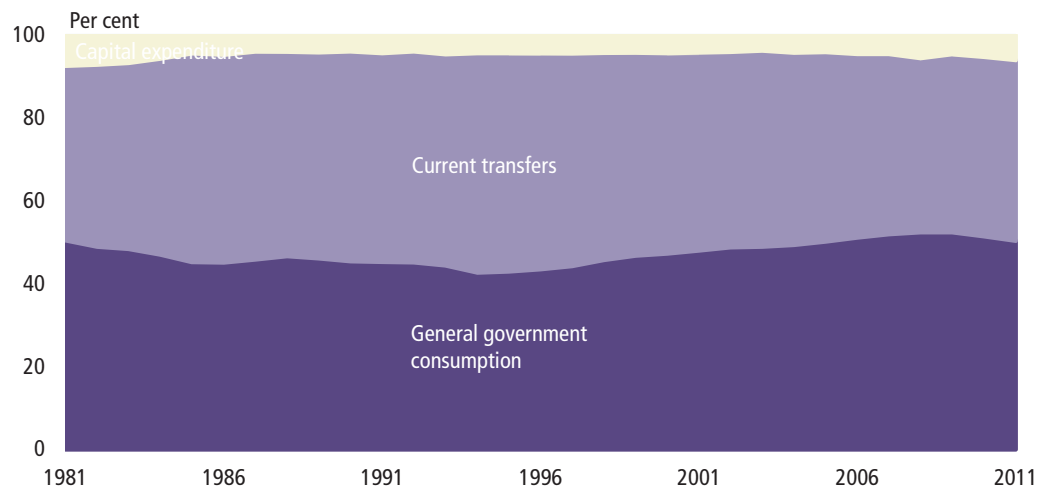
Expenditure by type of transaction

Expenditure by type of transaction shows general government expenditure divided by activities. The distribution of expenditure by type of transaction distinguishes between consumption, current transfers and capital expenditure. Consequently, expenditure by type of transaction shows whether expenditure covers intermediate consumption, reallocation, or capital formation. General government consumption mainly comprises salaries and purchases of goods used in the production of services, which are made available to the public. Current transfers are primarily transfers to households, including pensions and unemployment benefits. Capital expenditure covers, e.g. investments in schools, hospitals, and roads.

From 1975 until the mid-1990s, public expenditure accounted for a falling share of total public expenditure, while current transfers accounted for an increasing share. From the mid-1990s until 2009, there was a slight increase in the share of public consumption expenditure, while current transfers accounted for a minor fall. In 2011 the share of public consumption expenditure slightly decreased and the current transfers slightly increased. The percentage of capital expenditure has fallen until the mid-1980s, but has since then showed a relatively constant share of public expenditure.



Figure 18 Public expenditure¹ by type of transaction



¹ General government current and capital expenditure, including consumption of fixed capital plus sales of goods and services.

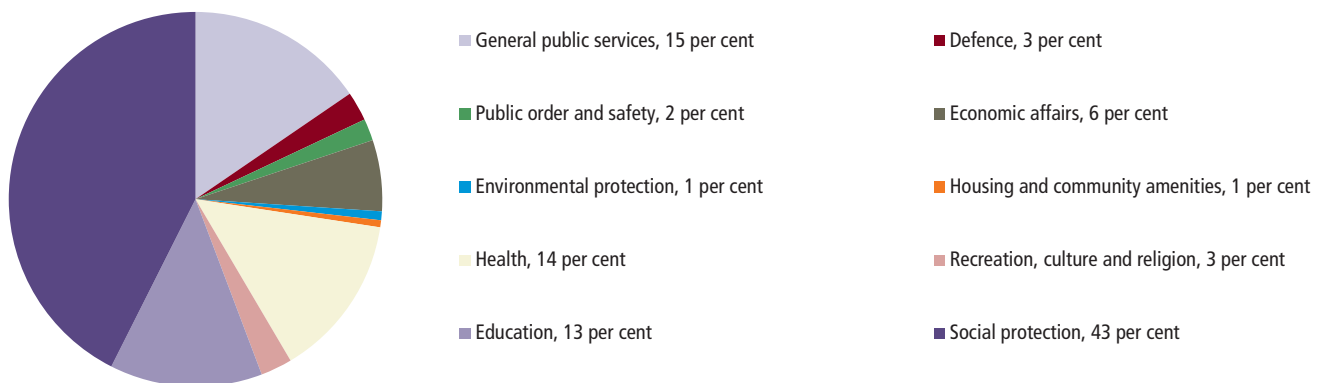
www.statbank.dk/off14 and off3

Public expenditure by function

The distribution of expenditure by function distinguishes public expenditure by function. Public expenditure by function provides an overview of the mutual size distribution of expenditure among the individual categories, e.g. health, defence, education, etc. The distribution of expenditure by function has been more or less stable since 1985. However, there has been a slight increase in expenditure on social conditions, which has been compensated for by a reduction in the proportion of expenditure on overall general government services and economic services.

Figure 19

Current and capital expenditure by function. 2012



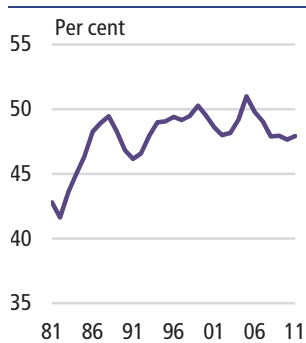
www.statbank.dk/off23

Expenditure on overall public services along with defence, public order and safety, are categories for which expenditure has historically been the basis for the general government sector. Expenditure on general public services amounts to 15 per cent of total public expenditure and comprises general government administration, etc. Defence, public order and safety accounted for 3 per cent and 2 per cent of the resources, respectively.



Education, health and social security are functions which are considered core services in a modern welfare state. 69.9 per cent of expenditure in 2012 was spent on these important functions. Expenditure on social security accounts for the largest amount of resources (42.6 per cent). This includes expenditure on, e.g. old-age pension, unemployment benefits, and cash benefits. Expenditure on education and health amounts to 13.2 per cent and 14.1 per cent of total expenditure, respectively. 6.1 per cent of expenditure was spent on economic services, which include especially expenditure on economic, trade, labour market plus transport, communication, and other business services. 0.6 per cent and 2.7 per cent, respectively, are spent on housing and public facilities and on religion, leisure and culture.

Figure 20 Taxes and duties as a percentage of GDP



www.statbank.dk/nat01 and [off12](http://www.statbank.dk/off12)

Taxes and duties

Taxes as per cent of GDP relatively stable since 1988

General government expenditure is reflected in a similar need for funding where taxes and duties in particular play a decisive role.

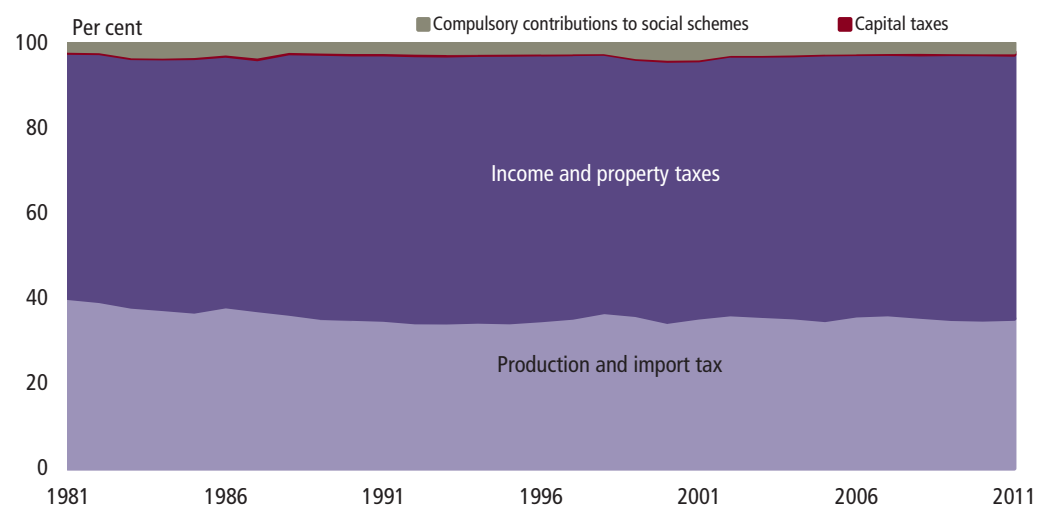
In the years from 1975 to 1988, the share of taxes and duties of GDP increased from 38.4 per cent to 49.4 per cent. Since 1988, this proportion has remained almost constant and was 47.9 per cent in 2011.

No changes in the tax structure for 40 years

Total taxes can be divided into four main types: Income and property taxes, production and import taxes, capital taxes and compulsory contributions to social security schemes.

Income and property taxes account for the largest share of total taxes. Income and property taxes are taxes on incomes earned by individuals and enterprises (e.g. personal taxes, corporation tax, real interest tax), and taxes linked to the possession of property (e.g. vehicle excise duty).

Figure 21 National accounts distribution of total taxes and duties



www.statbank.dk/off3



Production and import taxes are other large items, which primarily comprise VAT and various selective excise duties. Some production and import taxes are used to influence the behaviour of people and companies (e.g. “green” taxes and duties).

The last two items, capital taxes and compulsory contributions to social schemes, are not significant in terms of revenue. The latter is important in other countries where many welfare benefits are funded by compulsory contributions and where social benefits are granted with reference to people's attachment to the labour market.

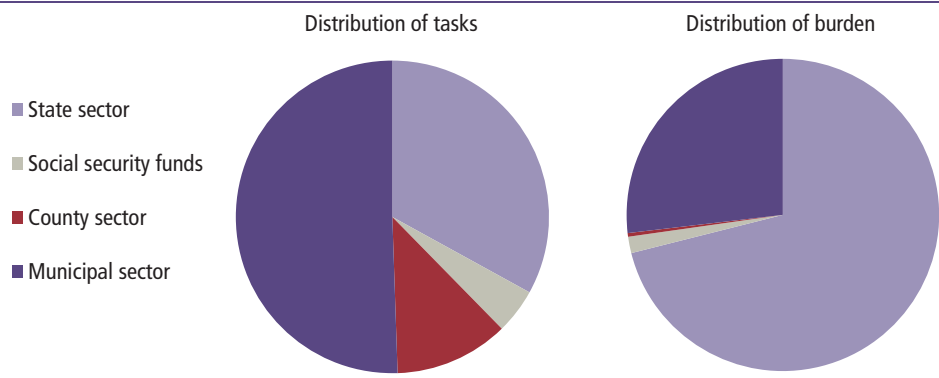
Distribution of tasks and burden

Division of responsibilities between the sub-sectors

The general government sector can be divided into the following sub-sectors: municipalities, regions, the state and social security funds. In Denmark, there is a high degree of division of responsibilities between the individual sub-sectors. This division of responsibilities can be described by distributing expenditure according to tasks and burden. The distribution of tasks shows expenditure according to the sector that is responsible for such tasks in relation to the public. The sector funding the expenditure is shown by the distribution of burden.

The state covers more of the expenditure than the division of responsibilities dictates. Regions (from 2007), social security funds, and especially municipalities cover less expenditure than is dictated by the division of responsibilities. This is because the state refunds the other sub-sectors for a number of costs, particularly statutory costs in the social area.

Figure 22 Distribution of tasks and burden between sub-sectors. 2011



Public expenditure in EU-27

On 1 January 2007, the EU was enlarged by two Eastern and Central European Countries: Bulgaria and Romania. EU was founded with European Coal and Steel Community in 1952 by the countries: France, West Germany, Italy, Belgium, Luxembourg and the Netherlands. EU has since then been expanded in 1973, were Denmark joined, 1981, 1986, 1995, 2004 and latest in 2007. The biggest enlargement was in 2004 where EU was expanded with ten Eastern and Central European Countries.

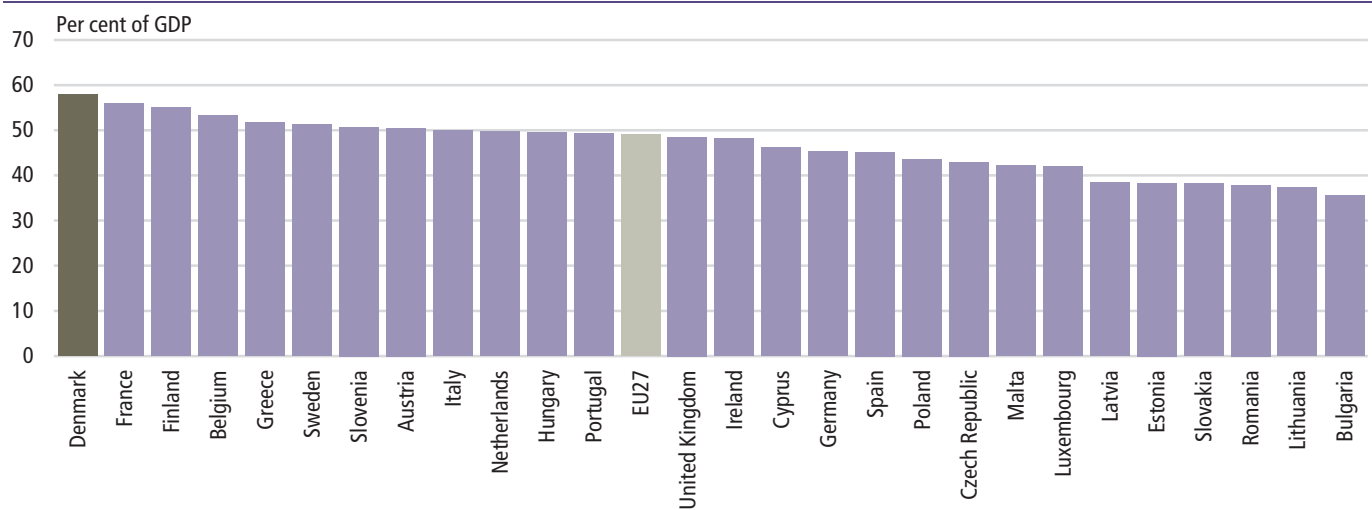


Size of the public sector

There are in the EU great variations in the size of the public sector measured in terms of total public expenditure as a per cent of GDP, from 35.6 per cent (Bulgaria) to 57.9 per cent (Denmark). These variations may reflect either a political choice or the stage of development of the country.

There is a tendency for the size of the public sector to increase concurrently with the development of a country. Consequently, the size of the public sector is greater in industrialized countries, compared to developing countries.

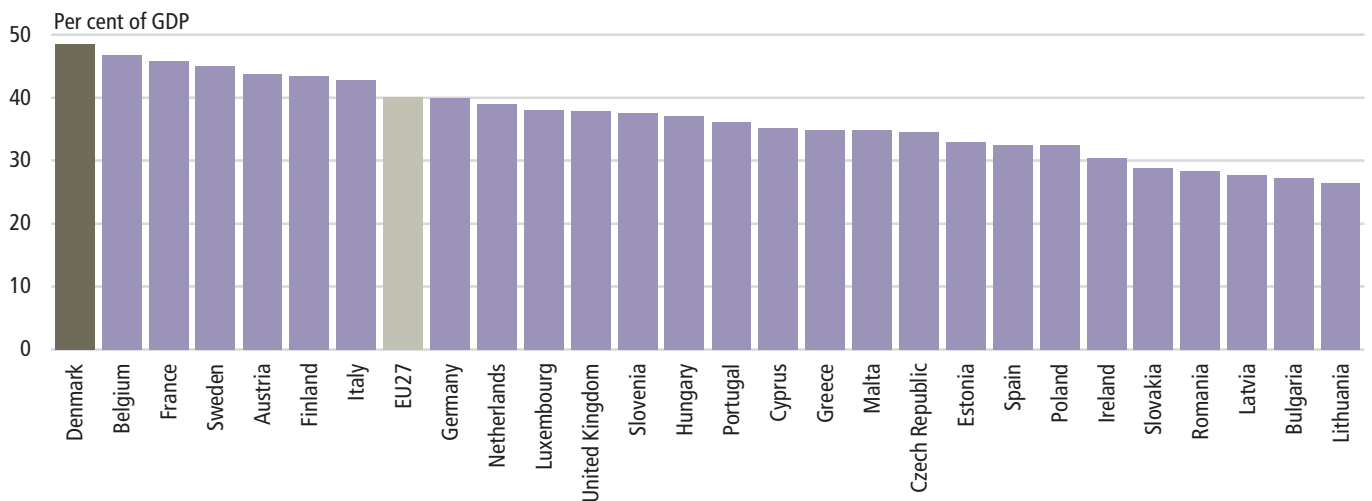
Figure 23 Public expenditure as a percentage of GDP in EU, 2011



Source: Eurostat, table tec00023

Comparison of taxes

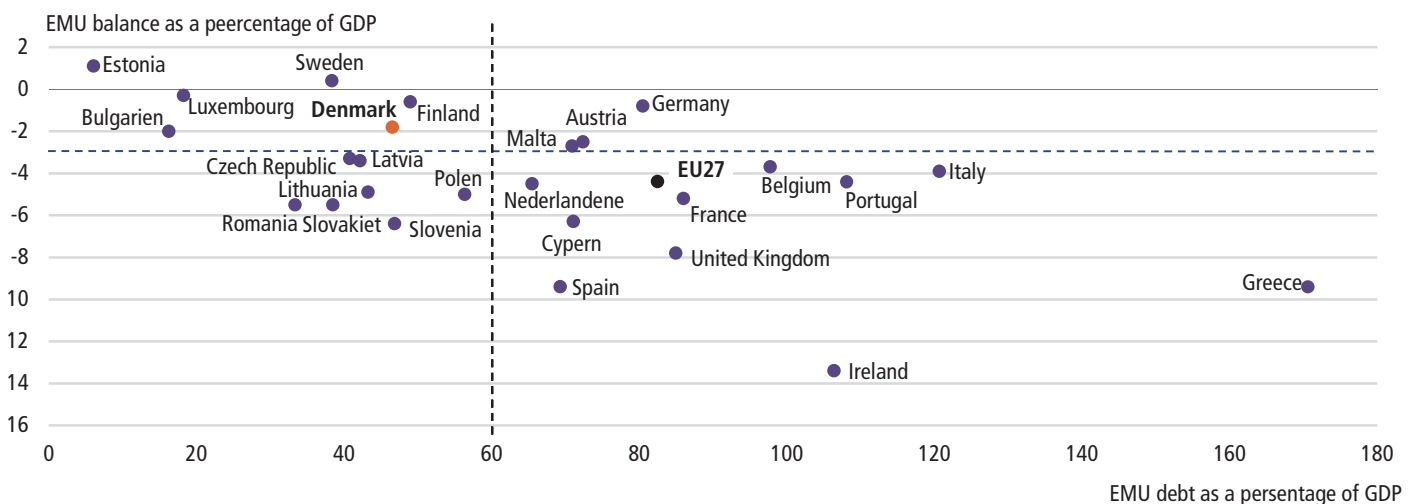
There are in the EU great variations tax burden (taxes and duties as a per cent of GDP), from 26.4 per cent (Lithuania) to 48.6 per cent (Denmark). Comparisons between countries should be made with caution, as the tax burden depends, for example, on whether income transfers (old-age pension, etc.) take place as net transfers, gross transfers or allowances. Net transfers are transfers that are tax free for the recipient, while gross transfers are subject to tax. In Denmark, gross transfers are most prevalent, which means that tax revenues are greater.


Figure 24 Taxes and duties as a percentage of GDP. 2011


Source: Eurostat, table gov_a_tax_ag

Public EMU balance and EMU debt in the EU

In the European Economic and Monetary Union (EMU) great importance is attached to sound public finances. The EMU criteria are a guideline for the fiscal policy situation in the EU and cover the public EMU balance and EMU debt. The EMU criteria prescribe that the deficit of the EU Member States must not exceed 3 per cent of GDP and EMU debt must not exceed 60 per cent of GDP.

Figure 25 EMU balance and EMU debt as a percentage of GDP in EU. 2011


Source: Eurostat, table tec00127 and tsdde410

The total deficit for EU was 4.4 per cent of GDP in 2011. The public EMU deficit was low in, e.g. Denmark, with 1.8 per cent of GDP and in Sweden there was a surplus of 0.4 per cent of GDP. There are seventeen countries whose deficit is above the threshold of 3 per cent. Two of these countries are Ireland and Greece with EMU deficit of 13.4 per cent and 9.4 per cent, respectively.



The total EMU debt of EU was 82.5 per cent of GDP in 2011. In other words, the average of EU is above the fixed limit of 60 per cent. The EMU debt of Italy and Greece was high with 120.7 per cent and 170.6 per cent of GDP, respectively, while the EMU debt of Estonia and Bulgaria was low with 6.1 per cent and 16.3 per cent of GDP, respectively. In 2011, Denmark's EMU debt was 46.6 per cent of GDP.



Table 252 Supply and demand

	Gross domestic product at market prices	Imports of goods and services	Resources, total	Private consumption expenditure	Government consumption expenditure	Gross capital formation	Exports of goods and services
— DKK mio. at current prices —							
2005	1 545 257	681 203	2 226 460	745 139	402 509	321 807	757 006
2006	1 631 659	797 745	2 429 404	786 583	422 604	370 615	849 602
2007	1 695 264	846 518	2 541 782	820 408	439 979	396 153	885 241
2008	1 753 152	903 963	2 657 115	840 017	465 404	392 109	959 585
2009	1 664 790	728 162	2 392 952	822 049	495 915	281 841	793 147
2010*	1 761 116	788 693	2 549 809	857 578	509 779	295 439	887 012
2011*	1 791 518	863 277	2 654 795	874 529	508 122	315 313	956 830
2012*	1 820 247	912 335	2 732 582	900 586	520 110	319 433	992 455
— DKK mio. in 2005 prices ¹ , chain figures —							
2005	1 545 257	681 203	2 226 460	745 139	402 509	321 807	757 006
2006	1 597 714	772 600	2 370 314	771 596	413 635	360 213	824 872
2007	1 623 010	805 729	2 428 894	794 952	419 185	367 028	847 735
2008	1 610 288	832 649	2 443 224	792 482	427 189	348 136	876 018
2009	1 519 044	730 546	2 249 957	763 844	436 306	260 425	792 967
2010*	1 543 003	754 080	2 296 700	777 084	437 893	269 786	816 493
2011*	1 560 044	796 244	2 353 942	773 255	431 532	285 413	869 944
2012*	1 552 721	816 538	2 365 994	777 606	432 257	284 747	877 721
— Annual real growth in per cent —							
2005	2.4	11.1	8.9	3.8	1.3	5.4	8.0
2006	3.4	13.4	6.5	3.6	2.8	11.9	9.0
2007	1.6	4.3	2.5	3.0	1.3	1.9	2.8
2008	-0.8	3.3	0.6	-0.3	1.9	-5.1	3.3
2009	-5.7	-12.3	-7.9	-3.6	2.1	-25.2	-9.5
2010*	1.6	3.2	2.1	1.7	0.4	3.6	3.0
2011*	1.1	5.6	2.5	-0.5	-1.5	5.8	6.5
2012*	-0.5	2.5	0.5	0.6	0.2	-0.2	0.9

¹ Chained values do not show additivity. The sum of the components will thus not be equal to the shown totals. The magnitude of the difference is not an indicator of the reliability of the results.



Table 253 Generation and disposition of income

	2010*	2011*	2012*
	DKK mio. at current prices		
Compensation of employees	979 251	991 165	998 285
+Gross operating surplus and mixed income	537 741	548 953	569 332
Gross domestic income at factor cost, GDI	1 516 993	1 540 118	1 567 616
+Other taxes less subsidies on production	-281	-41	-90
Gross value added	1 516 712	1 540 077	1 567 527
+Taxes on products	260 034	266 468	268 807
+Subsidies on products	15 630	15 027	16 087
Gross domestic product at market prices, GDP	1 761 116	1 791 518	1 820 247
+Compensation of employees from the rest of the world	6 774	6 833	7 035
+Compensation of employees to the rest of the world	16 015	16 913	17 139
+Subsidies from the rest of the world	7 399	7 305	7 388
+Taxes on production and import to the rest of the world	3 275	3 211	3 000
+Property income from the rest of the world	141 358	148 442	151 912
+Property income paid to the rest of the world	95 120	99 137	92 119
Gross national income, GNI	1 802 236	1 834 837	1 874 324
+Current taxes on income, wealth, etc. from the rest of the world	4 195	4 512	4 586
+Other current transfers, etc. from the rest of the world	10 130	12 005	12 248
+Current taxes on income, wealth, etc. to the rest of the world	496	496	616
+Other current transfers, etc. to the rest of the world	49 621	51 695	54 981
Gross national disposable income	1 766 444	1 799 162	1 835 562
+Private final consumption expenditure	857 578	874 529	900 586
+General government final consumption expenditure	509 779	508 122	520 110
Gross national saving	399 086	416 510	414 866
+Corporations and households gross fixed capital formation ¹	257 028	276 698	274 431
+General government gross fixed capital formation	38 411	38 616	45 001
Current external balance	103 648	101 197	95 434
+Capital transfers from the rest of the world	2 346	6 005	2 523
+Capital transfers to the rest of the world	1 953	2 044	2 003
+Acquisitions less disposals of non-financial non-produced assets	75	735	784
Net lending/net borrowing	104 116	105 893	96 738

¹ Incl. change in stock.



Table 254 Net value added, consumption and gross fixed capital formation

	Net value added		Total consumption ¹			Gross fixed capital formation per constant prices
	Constant prices	Annual increase at constant prices	Constant prices	Constant prices per inhabitant	Annual real growth per inhabitant	
	1980=100	per cent	1980=100		per cent	
1921-1929 average	24	4.1	23	35	2.8	11
1930-1939 average	31	2.5	28	40	1.4	17
1940-1946 average	31	0.2	27	34	0.6	14
1947-1950 average	39	4.4	36	44	0.6	26
1951-1957 average	44	1.7	40	46	1.0	33
1958-1965 average	57	4.6	53	58	4.1	56
1966-1973 average	79	3.7	76	79	3.6	95
1974-1975 average	88	-1.5	87	88	-0.9	101
1976-1979 average	95	3.4	97	98	3.8	111
1980-1981 average	100	-0.5	100	100	-1.4	94
1982-1986 average	110	3.5	107	107	3.1	119
1987-1993 average	121	0.8	114	113	-0.1	148
1994-2000 average	140	2.9	132	128	2.1	192
2001-2003 average	152	0.0	141	135	0.6	211
2005-2007 average	158	1.7	156	147	3.0	296
2008-2012* average	124	-0.9	127	118	-0.8	177

¹ Incl. Changes in stock and livestock.

www.statbank.dk/nat02

Table 255 Denmark and rest of the world (ROW)

	2010*	2011*	2012*
	DKK mio. in current prices		
Exports of goods	533 188	593 394	609 140
+Income from tourism from ROW	39 202	39 060	37 779
+Exports of other services	314 623	324 377	345 536
+Compensation of employees from ROW	6 774	6 833	7 035
+Subsidies from ROW	7 399	7 305	7 388
+Property income from ROW	141 358	148 442	151 912
+Current taxes on income, wealth, etc. from ROW	4 195	4 512	4 586
+Other current transfers, etc. from ROW	10 130	12 005	12 248
Current income from ROW	1 056 868	1 135 926	1 175 623
+Capital transfers, etc. from ROW	2 346	6 005	2 523
+Disposal of non-financial, non-produced assets	187	814	873
Total income from ROW	1 059 402	1 142 745	1 179 020
Imports of goods	492 663	552 705	584 038
+Expenditure on tourism etc. in ROW	58 447	57 236	56 823
+Imports of other services	237 582	253 335	271 475
+Compensation of employees to ROW	16 015	16 913	17 139
+Taxes on production and import	3 275	3 211	3 000
+Property income to ROW	95 120	99 137	92 119
+Current taxes on income, wealth, etc. to ROW	496	496	616
+Other current transfers, etc. to ROW	49 621	51 695	54 981
Current expenditure to ROW, total	953 221	1 034 729	1 080 189
+Capital transfers, etc. to ROW	1 953	2 044	2 003
+Acquisition of non-financial, non-produced assets	112	79	90
Total expenditure to ROW	955 286	1 036 852	1 082 282
External balance of goods	40 525	40 689	25 102
External balance of services	57 795	52 865	55 017
External balance of goods and services	98 320	93 553	80 119
Current external balance	103 648	101 197	95 434
Net lending	104 116	105 893	96 738

Note: Excluding Greenland and Faroe Islands.

www.statbank.dk/nat01



Table 256 General government

	2010*	2011*	2012*
	DKK mio. in current prices		
Output	537 113	534 942	546 204
÷ Intermediate consumption	174 563	174 848	180 850
Gross value added, GVA	362 550	360 094	365 354
÷ Consumption of fixed capital	33 857	34 278	35 500
Net value added	328 693	325 817	329 854
Gross value added, GVA	362 550	360 094	365 354
÷ Other taxes less subsidies on production	-5 248	-4 642	-5 064
Gross domestic product at factor cost	367 798	364 736	370 418
÷ Compensation of employees (paid by res. employers)	333 941	330 458	334 918
Gross operating surplus	33 857	34 278	35 500
+ Taxes on production and income	292 687	301 146	304 769
÷ Subsidies	44 440	45 652	47 751
+ Property income, net from ROW	177	2 084	-1 722
Gross primary income	282 282	291 856	290 796
+ Current taxes on income, wealth, etc.	521 407	531 300	551 664
+ Social contributions	33 970	35 113	34 495
+ Social benefits other than transfers in kind	•	•	•
+ Other current transfers	14 780	17 239	15 103
Gross total income	852 439	875 508	892 059
+ Current taxes on income, wealth, etc.	•	•	•
+ Social contributions	•	•	•
+ Social benefits other than transfers in kind	303 701	312 317	322 313
+ Other current transfers	43 981	44 412	48 783
Gross total expenditure	347 682	356 729	371 096
Gross disposable income	504 757	518 779	520 963
÷ Social transfers in kind	364 888	363 606	370 955
Gross adjusted disposable income	139 870	155 173	150 008
Gross disposable income	504 757	518 779	520 963
÷ Final consumption expenditure	509 779	508 122	520 110
Gross saving	-5 022	10 656	854
Adjusted gross disposable income	139 870	155 173	150 008
÷ Actual collective consumption	144 892	144 517	149 154
Gross saving	-5 022	10 656	854
+ Capital transfers, net	-4 464	-7 099	-31 038
Changes in net worth due to savings and capital transfers	-9 486	3 558	-30 184
÷ Gross fixed capital formation	38 411	38 616	45 001
÷ Changes in inventories	•	•	•
÷ Acquisitions of non-financial non-produced assets, net.	-495	- 119	221
Net lending	-47 402	-34 939	-75 407

www.statbank.dk/nat03



Table 257

Corporate sector

	2010*	2011*	2012*
	DKK mio.. in current prices		
Output	2 207 287	2 333 369	2 408 310
÷ Intermediate consumption	1 244 815	1 353 315	1 407 099
Gross value added, GVA	962 472	980 055	1 001 211
÷ Consumption of fixed capital	193 513	195 688	191 510
Net value added	768 959	784 366	809 701
Gross value added, GVA	962 472	980 055	1 001 211
÷ Other taxes less subsidies on production	3 440	3 038	2 963
Gross domestic product at factor cost,	959 032	977 017	998 248
÷ Compensation of employees (paid by resident producers)	592 368	606 197	608 601
Gross operating surplus and mixed income	366 665	370 820	389 647
+ Property income, net.	29 266	29 318	37 654
Gross primary income	395 931	400 138	427 301
+ Current taxes on income, wealth, etc.	•	•	•
+ Social contributions	132 653	130 474	134 130
+ Social benefits other than transfers in kind	•	•	•
+ Other current transfers	55 060	55 501	54 463
Gross total income	583 644	586 113	615 894
+ Current taxes on income, wealth, etc.	48 870	49 778	55 503
+ Social contributions	•	•	•
+ Social benefits other than transfers in kind	65 813	72 392	77 718
+ Other current transfers	60 524	61 955	59 690
Gross total expenditure	175 207	184 124	192 911
Gross disposable income	408 437	401 989	422 982
÷ Adjustment for the change in net equity of households in pension funds reserves	66 840	58 082	56 411
Gross saving	341 597	343 906	366 571
+ Capital transfers, net.	299	10 462	2 329
Changes in net worth due to savings and capital transfers	341 896	354 368	368 900
÷ Gross fixed capital formation, etc.	182 692	186 081	196 705
÷ Changes in inventories	-4 024	3 292	-4 771
÷ Acquisitions of non-financial non-produced assets, net.	173	-676	-894
Net lending	163 055	165 670	177 861

Note: Sole proprietorships are included in the household sector.

www.statbank.dk/nat03



Table 258	Household sector		
	2010*	2011*	2012*
	DKK mio. in current prices		
Output	340 776	360 679	366 099
÷ Intermediate consumption	149 086	160 751	165 137
Gross value added, GVA	191 690	199 928	200 962
÷ Consumption of fixed capital	70 997	67 056	67 607
Net value added	120 693	132 872	133 355
Gross value added, GVA	191 690	199 928	200 962
÷ Other taxes less subsidies on production	1 528	1 563	2 011
Gross domestic product at factor cost	190 162	198 365	198 951
÷ Compensation of employees (paid by resident producers)	52 943	54 509	54 766
Gross operating surplus and mixed income	137 219	143 856	144 185
+ Compensation of employees (received by resident employees)	970 010	981 084	988 181
+ Taxes on production and imports	•	•	•
+ Subsidies	•	•	•
+ Property income, net	16 794	17 903	23 860
Gross primary income	1 124 023	1 142 844	1 156 226
+ Current taxes on income, wealth, etc.	•	•	•
+ Social contributions	•	•	•
+ Social benefits other than transfers in kind	367 256	382 148	397 385
+ Other current transfers	33 538	31 906	34 077
Gross total income	1 524 817	1 556 898	1 587 689
+ Current taxes on income, wealth, etc.	468 839	477 507	492 191
+ Social contributions	167 120	166 033	169 115
+ Social benefits other than transfers in kind	•	•	•
+ Other current transfers	35 609	34 963	34 768
Gross total expenditure	671 567	678 503	696 073
Gross disposable income	853 250	878 394	891 616
+ Social transfers in kind	364 888	363 606	370 955
Adjusted gross disposable income	1 218 137	1 242 000	1 262 571
Gross disposable income	853 250	878 394	891 616
+ Adjustment for the change in net equity in households in pension funds reserves	66 840	58 082	56 411
÷ Individual consumption expenditure	857 578	874 529	900 586
Gross saving	62 511	61 948	47 441
Adjusted gross disposable income	1 218 137	1 242 000	1 262 571
+ Adjustment for the change in net equity in households in pension funds reserves	66 840	58 082	56 411
÷ Actual individual consumption	1 222 466	1 238 135	1 271 541
Gross saving	62 511	61 948	47 441
+ Capital transfers, net	4 558	597	29 229
Changes in net worth due to savings and capital transfer	67 069	62 545	76 671
÷ Gross fixed capital formation, etc.	79 036	87 038	81 709
÷ Changes in inventories	-677	287	788
÷ Acquisitions of non-financial non-produced assets, net	248	59	-111
Net lending	-11 538	-24 839	-5 716

Note 1: Sole proprietorships are included in the household sector.

www.statbank.dk/nat03

Note 2: Households and non-profit institutions serving households (NPISH).



Table 259

Output

	Current prices			Constant 2005 prices, chain figures ¹		
	2010*	2011*	2012*	2010*	2011*	2012*
	DKK mio.					
Total	3 085 177	3 228 991	3 320 614	2 718 112	2 776 611	2 790 688
Of which: General government	537 113	534 942	546 204	459 352	452 276	452 023
A Agriculture, forestry, fishing	77 000	82 105	84 843	62 020	60 042	59 843
B Mining and quarrying	57 771	69 916	65 999	40 461	36 467	32 924
C Manufacturing	561 468	592 396	617 757	504 779	513 866	525 947
D-E Utility services	94 458	98 071	100 622	74 181	71 874	71 957
D Electricity, gas and steam	61 967	63 008	65 499	47 284	43 638	44 177
E Water, sewerage and waste	32 491	35 063	35 123	27 214	28 755	28 210
F Construction	180 445	196 968	196 853	155 923	164 321	160 970
G-I Trade and transport etc.	722 913	758 575	781 708	657 763	695 468	702 427
G Wholesale and retail trade	353 374	375 455	376 072	310 592	322 625	316 487
H Transportation	318 489	328 738	348 926	302 591	327 062	341 266
I Accommodation, food service	51 049	54 382	56 710	45 240	47 006	47 401
J Information and communication	152 375	158 916	165 015	154 585	158 754	166 706
K Financial and insurance	157 360	162 025	167 179	152 414	153 534	144 323
LA Real estate;rent.of non-res.b.	61 644	67 291	66 998	53 641	57 148	54 987
LB Dwellings	167 166	172 713	178 420	143 975	145 186	146 393
M-N Other business services	232 193	249 978	262 427	198 575	210 776	218 419
M Knowledge-based services	153 050	161 243	166 088	129 677	135 382	137 775
N Travel agent, cleaning, etc.	79 143	88 735	96 339	68 917	75 477	80 764
O-Q Public adm., education, health	538 563	536 456	548 166	459 292	452 045	452 153
O Public adm., defence etc.	150 684	150 389	153 823	129 433	127 677	127 887
P Education	132 144	134 412	137 390	112 692	113 189	113 206
Q Human health; social work	255 735	251 655	256 953	217 140	211 166	211 048
R-S Arts, entertainm. oth.service	81 819	83 581	84 627	69 411	69 205	68 790
R Arts and entertainment etc.	39 096	40 475	40 674	33 345	33 809	33 311
SA Other service activities	40 354	40 879	41 676	34 049	33 608	33 757
SB Households as employers	2 370	2 228	2 277	2 012	1 788	1 719

¹ Chained values do not show additivity. The sum of the components will thus not be equal to the shown totals. The magnitude of the difference is not an indicator of the reliability of the results.



Table 260 Gross value added

	Current prices			Constant 2005 prices, chain figures ¹		
	2010*	2011*	2012*	2010*	2011*	2012*
	DKK mio.					
Gross value added, total	1 516 712	1 540 077	1 567 527	1 314 083	1 330 387	1 326 129
Of which: General government	362 550	359 891	365 354	305 681	302 433	301 215
A Agriculture, forestry, fishing	21 818	21 946	22 030	14 683	13 854	13 511
B Mining and quarrying	47 883	59 880	56 423	32 430	28 894	25 985
C Manufacturing	172 766	166 902	168 231	163 835	168 829	173 540
D-E Utility services	41 465	37 427	38 539	35 888	32 641	32 830
D Electricity, gas and steam	29 774	25 490	26 627	26 791	22 831	23 232
E Water, sewerage and waste	11 691	11 937	11 912	9 238	9 750	9 562
F Construction	66 146	74 172	73 108	57 673	62 710	61 073
G-I Trade and transport etc.	300 437	297 278	305 115	256 774	262 315	262 727
G Wholesale and retail trade	181 264	183 935	184 923	153 263	154 781	153 096
H Transportation	97 877	92 667	97 829	83 662	87 911	89 971
I Accommodation, food service	21 296	20 675	22 362	19 734	19 472	19 752
J Information and communication	67 928	68 812	68 639	77 378	79 969	83 914
K Financial and insurance	95 231	101 552	110 468	93 970	98 547	93 665
LA Real estate; rent of non-res. b.	37 427	40 575	40 940	32 256	34 343	33 118
LB Dwellings	123 879	126 692	127 956	107 283	107 053	105 406
M-N Other business services	117 173	122 584	127 044	93 919	99 587	103 401
M Knowledge-based services	79 781	82 388	83 704	62 434	65 517	67 043
N Travel agent, cleaning, etc.	37 392	40 195	43 339	31 216	33 830	36 167
O-Q Public adm., education, health	372 002	369 628	375 720	311 897	308 499	307 588
O Public adm., defence etc.	95 056	94 329	95 815	80 130	79 379	79 191
P Education	97 181	98 655	100 448	81 821	82 503	82 306
Q Human health; social work	179 764	176 644	179 457	149 954	146 641	146 115
R-S Arts, entertainm. oth. service	52 558	52 628	53 314	42 785	42 306	42 037
R Arts and entertainment etc.	22 792	23 022	23 179	18 638	18 764	18 477
SA Other service activities	27 396	27 379	27 858	22 138	21 750	21 833
SB Households as employers	2 370	2 228	2 277	2 012	1 788	1 719

¹ Chained values do not show additivity. The sum of the components will thus not be equal to the shown totals. The magnitude of the difference is not an indicator of the reliability of the results.



Table 261 Compensation of employees and gross operating surplus and mixed income, by kind of activity

	Compensation of employees			Gross operating surplus and mixed income		
	2010*	2011*	2012*	2010*	2011*	2012*
	DKK mio.					
Total	979 251	991 165	998 285	537 741	548 953	569 332
Of which: General government	333 941	330 458	334 918	33 857	34 278	35 500
A Agriculture, forestry, fishing	8 204	8 365	8 639	21 026	21 334	21 375
B Mining and quarrying	1 832	1 960	2 126	46 193	58 069	54 450
C Manufacturing	123 552	125 320	125 286	50 720	43 148	44 560
D-E Utility services	11 933	12 319	11 958	29 406	24 973	26 443
D Electricity, gas and steam	6 690	6 931	6 463	23 090	18 564	20 170
E Water, sewerage and waste	5 244	5 389	5 496	6 316	6 409	6 273
F Construction	55 512	56 213	56 564	10 686	18 007	16 595
G-I Trade and transport etc.	204 060	208 961	210 131	98 376	90 389	97 122
G Wholesale and retail trade	132 302	134 574	135 829	49 709	50 133	49 891
H Transportation	54 395	56 324	55 527	44 675	37 583	43 580
I Accommodation, food service	17 363	18 063	18 774	3 992	2 672	3 650
J Information and communication	50 734	52 152	52 114	17 889	17 386	17 272
K Financial and insurance	54 597	55 553	54 166	36 545	41 683	51 864
LA Real estate;rent.of non-res.b.	8 154	8 771	8 491	26 066	28 421	28 970
LB Dwellings	3 960	4 067	4 155	110 606	112 765	113 669
M-N Other business services	85 267	87 653	90 558	32 691	35 747	37 327
M Knowledge-based services	57 720	59 473	61 750	22 727	23 610	22 670
N Travel agent, cleaning, etc.	27 547	28 180	28 808	9 964	12 137	14 657
O-Q Public adm., education, health	335 508	333 790	337 930	40 016	39 504	41 569
O Public adm., defence etc.	80 601	80 134	80 507	15 345	15 121	16 261
P Education	90 592	91 646	92 581	7 491	7 948	8 835
Q Human health; social work	164 316	162 010	164 841	17 179	16 436	16 473
R-S Arts, entertainm. oth.service	35 937	36 040	36 166	17 522	17 528	18 116
R Arts and entertainment etc.	11 965	12 004	12 049	11 588	11 813	11 949
SA Other service activities	21 602	21 809	21 840	5 934	5 715	6 167
SB Households as employers	2 370	2 228	2 277	-	-	-

www.statbank.dk/nat07n



Table 262 Hours worked

	Actual hours worked for employees			Total actual hours worked		
	2010*	2011*	2012*	2010*	2011*	2012*
	thousand hours					
Gross value added, total	3 967 532	3 957 863	3 942 727	4 290 681	4 284 167	4 264 800
Of which: General government	1 291 597	1 274 910	1 262 553	1 291 597	1 274 910	1 262 553
A Agriculture, forestry, fishing	62 170	62 097	63 801	127 094	128 655	130 020
B Mining and quarrying	5 511	5 757	6 172	5 581	5 824	6 239
C Manufacturing	472 801	469 012	462 335	486 953	482 996	476 227
D-E Utility services	42 281	42 784	43 574	42 326	42 827	43 616
D Electricity, gas and steam	21 443	21 714	22 417	21 443	21 714	22 417
E Water, sewerage and waste	20 838	21 069	21 157	20 882	21 113	21 200
F Construction	227 926	228 870	229 731	269 495	272 118	272 205
G-I Trade and transport etc.	938 599	945 287	941 342	1 039 687	1 046 315	1 040 839
G Wholesale and retail trade	574 491	573 975	569 227	641 289	640 494	634 801
H Transportation	245 278	249 867	246 554	261 924	266 740	263 265
I Accommodation, food service	118 830	121 445	125 562	136 475	139 080	142 773
J Information and communication	163 764	162 631	161 953	174 668	173 604	172 792
K Financial and insurance	138 459	136 726	133 490	138 459	136 726	133 490
LA Real estate; rent of non-res. b.	39 370	41 321	40 094	50 460	52 508	51 099
LB Dwellings	23 260	23 942	24 080	23 867	24 559	24 684
M-N Other business services	354 571	359 933	368 263	396 340	401 841	409 752
M Knowledge-based services	207 579	208 755	214 531	237 618	238 884	244 417
N Travel agent, cleaning, etc.	146 991	151 178	153 732	158 722	162 958	165 335
O-Q Public adm., education, health	1 310 074	1 292 751	1 282 528	1 330 774	1 313 384	1 302 711
O Public adm., defence etc.	265 555	268 867	262 880	265 558	268 870	262 883
P Education	334 905	340 085	336 496	338 305	343 460	339 716
Q Human health; social work	709 614	683 799	683 152	726 911	701 053	700 112
R-S Arts, entertainment and other service	188 746	186 752	185 364	204 978	202 809	201 126
R Arts and entertainment etc.	62 610	62 841	62 058	66 255	66 400	65 576
SA Other service activities	100 530	100 294	99 684	113 117	112 792	111 928
SB Households as employers	25 606	23 617	23 622	25 606	23 617	23 622

Records regarding hours worked in this publication are based on the current March version of the National Accounts. In the forthcoming publication of the National Accounts' June version, hours worked will be revised extraordinarily for the full period of 1966-2012 due to new source information from the Working Time Accounts. Data will be available at www.statbank.dk.

www.statbank.dk/nat18n


Table 263 Total employed and wage and salary earners

	Total employed ¹			Of which, wage and salary earners ²		
	2010*	2011*	2012*	2010*	2011*	2012*
	number of persons					
Total	2 816 737	2 806 116	2 797 467	2 644 485	2 635 387	2 627 066
Of which: General government	868 344	856 574	845 816	868 344	856 574	845 816
A Agriculture, forestry, fishing	72 765	72 334	73 167	38 349	38 462	39 363
B Mining and quarrying	3 321	3 448	3 685	3 281	3 409	3 646
C Manufacturing	316 784	313 790	311 499	309 025	306 079	303 800
D-E Utility services	26 371	26 582	26 815	26 348	26 560	26 792
D Electricity, gas and steam	13 148	13 280	13 516	13 148	13 280	13 516
E Water, sewerage and waste	13 222	13 303	13 299	13 199	13 280	13 277
F Construction	163 530	163 771	166 018	140 347	140 724	143 017
G-I Trade and transport etc.	707 614	710 136	709 499	660 973	663 888	663 340
G Wholesale and retail trade	455 209	453 928	452 460	427 098	426 041	424 627
H Transportation	155 214	156 873	153 876	145 293	147 031	144 053
I Accommodation, food service	97 191	99 335	103 163	88 582	90 816	94 661
J Information and communication	104 799	105 264	104 759	99 234	99 735	99 241
K Financial and insurance	93 300	92 483	89 627	93 300	92 483	89 627
LA Real estate;rent.of non-res.b.	27 591	28 790	28 255	22 240	23 469	22 945
LB Dwellings	12 608	12 825	12 944	12 202	12 422	12 541
M-N Other business services	265 725	268 361	273 077	239 458	242 300	247 066
M Knowledge-based services	151 205	152 662	155 620	132 806	134 375	137 368
N Travel agent, cleaning, etc.	114 519	115 699	117 458	106 651	107 924	109 698
O-Q Public adm., education, health	887 205	874 624	865 540	874 588	862 069	853 011
O Public adm., defence etc.	161 731	163 323	160 079	161 730	163 322	160 078
P Education	227 719	231 081	228 565	225 813	229 188	226 676
Q Human health; social work	497 755	480 220	476 897	487 045	469 559	466 258
R-S Arts, entertainm. oth.service	135 123	133 708	132 582	125 139	123 787	122 679
R Arts and entertainment etc.	45 094	44 583	44 601	43 160	42 671	42 691
SA Other service activities	72 649	72 953	72 090	64 599	64 944	64 097
SB Households as employers	17 380	16 172	15 892	17 380	16 172	15 892

¹ Includes employees temporarily on leave. ² Includes wage and salary earners temporarily on leave.

www.statbank.dk/nat18n



Table 264 Private consumption expenditure

	Current prices			2005 prices, chain figures ¹		
	2010*	2011*	2012*	2010*	2011*	2012*
	DKK mio.					
Total private consumption expenditure	857 578	874 529	900 586	777 084	773 255	777 606
Household consumption on Danish territory	840 966	858 958	884 785	762 602	760 420	765 196
Food	84 094	86 046	87 278	73 276	72 663	70 570
Beverages and tobacco	39 982	42 196	43 327	33 969	33 892	32 704
Clothing and footwear	40 117	39 810	39 712	39 888	38 991	38 474
Housing	192 529	199 431	206 980	164 337	165 880	167 763
Electricity, gas and other fuels	55 481	50 479	51 933	46 111	39 044	39 532
Furnishing, household equipment etc.	43 890	43 034	44 368	40 558	39 312	40 288
Medical products and health services	24 330	23 861	23 763	22 640	22 384	22 624
Purchase of vehicles	36 702	40 270	41 621	37 758	41 812	43 689
Other transport and communication	75 967	79 729	84 199	67 964	67 987	70 334
Recreation and culture	93 571	93 951	94 989	90 860	90 575	90 783
Other goods and services	154 303	160 152	166 616	144 483	148 169	148 988
Balance of tourism, net	3 313	1 993	2 514
Income from tourism	-39 202	-39 060	-37 779	-36 083	-35 194	-33 162
Expenditure on tourism	42 515	41 052	40 293	39 522	37 044	35 043
Membership organizations etc.	13 299	13 578	13 287	11 156	11 055	10 638
Goods	393 450	396 541	404 306	363 594	355 877	355 025
Durable	85 392	88 510	90 614	90 725	94 457	97 203
Semi-durable	86 065	85 701	87 589	82 983	81 665	82 928
Non-durable	221 993	222 330	226 103	189 105	180 164	176 236
Services	447 516	462 417	480 479	399 254	404 557	410 108
Housing	192 529	199 431	206 980	164 337	165 880	167 763
Other services	254 987	262 986	273 499	234 710	238 517	242 218

¹ Chained values do not show additivity. The sum of the components will thus not be equal to the shown totals. The magnitude of the difference is not an indicator of the reliability of the results.

www.statbank.dk/nat05

Table 265 Capital formation

	Current prices			2005 prices, chain figures ¹		
	2010*	2011*	2012*	2010*	2011*	2012*
	DKK mio.					
Machines and equipment	75 053	81 352	89 705	71 562	79 007	87 349
Transport	36 697	26 894	34 762	41 208	30 273	37 049
Buildings; facilities and installations	141 517	156 293	149 984	123 000	131 288	123 396
Housing	71 104	84 027	78 096	62 717	71 885	65 082
Other buildings	40 998	38 861	37 468	36 372	33 376	31 573
Civil engineering works	29 415	33 405	34 420	23 400	25 403	25 902
Livestock	-196	-56	24	-236	-26	12
Valuables, net	2 855	2 804	2 635	1 971	1 908	1 782
Purchased and own-account computer software	41 431	41 506	43 470	35 223	35 950	37 518
Entertainment, literary and artistic originals	2 071	1 943	1 897	1 834	1 680	1 606
Mineral exploration	712	998	939	675	849	790
Total gross fixed capital formation	300 140	311 734	323 416	274 342	282 160	288 283
Of which: General government acquisition of new fixed assets	37 573	39 955	43 404	34 036	35 474	38 104
+ Change in stocks, net	-4 701	3 579	-3 983	-2 760	2 265	-2 481
Total gross capital formation	295 439	315 313	319 432	269 786	285 413	284 747
- Consumption of fixed capital	298 367	297 022	294 617	268 006	265 814	264 009
Total net capital formation	-2 928	18 291	24 815	-1 025	5 821	6 230

¹ Chained values do not show additivity. The sum of the components will thus not be equal to the shown totals. The magnitude of the difference is not an indicator of the reliability of the results.

www.statbank.dk/nat04



Table 266 Gross fixed capital formation

	Current prices			Constant 2005 prices, chain figures ¹		
	2007	2008	2009	2007	2008	2009
	DKK mio.					
Total gross fixed capital formation	368 698	368 757	300 846	346 166	331 793	279 117
Machinery, equipment and transport equipment	140 881	141 176	114 169	139 392	135 817	114 166
Building and construction	194 298	188 927	148 346	174 384	160 198	130 713
Other gross fixed capital formation.	33 519	38 654	38 331	32 744	36 760	35 556
Of which: General government	31 846	32 994	34 016	29 726	29 637	32 088
Machinery, equipment and transport equipment	7 781	7 984	7 424	7 966	8 171	7 583
Building and construction	21 305	21 734	23 062	20 136	19 425	21 109
Other gross fixed capital formation.	2 760	3 276	3 530	2 702	3 129	3 264
A Agriculture, forestry, fishing	17 754	16 540	9 808	16 729	14 969	8 857
Machinery, equipment and transport equipment	10 029	9 636	5 025	9 702	9 008	4 481
Building and construction	7 243	6 352	4 284	6 537	5 447	3 872
Other gross fixed capital formation.	481	552	499	473	529	458
B Mining and quarrying	7 751	8 263	8 919	7 268	7 290	8 206
Machinery, equipment and transport equipment	2 284	2 624	2 523	2 278	2 562	2 387
Building and construction	4 666	4 103	4 480	4 218	3 398	3 939
Other gross fixed capital formation.	800	1 536	1 916	768	1 388	1 899
C Manufacturing	33 734	37 183	28 798	32 165	33 942	26 094
Machinery, equipment and transport equipment	19 333	20 314	18 219	18 648	18 709	16 587
Building and construction	9 865	11 657	5 923	9 007	10 151	5 292
Other gross fixed capital formation.	4 536	5 213	4 655	4 440	4 976	4 294
D-E Utility services	14 993	15 338	15 915	13 901	12 435	13 297
Machinery, equipment and transport equipment	5 949	5 087	5 820	5 710	4 560	5 211
Building and construction	8 373	9 651	9 513	7 562	7 295	7 577
Other gross fixed capital formation.	671	600	583	656	572	537
F Construction	8 190	7 032	5 485	7 893	6 681	4 940
Machinery, equipment and transport equipment	5 904	5 593	4 251	5 764	5 419	3 853
Building and construction	1 697	757	591	1 553	656	523
Other gross fixed capital formation.	589	682	642	577	651	591
G-I Trade and transport etc.	66 477	80 513	62 632	64 105	74 208	62 951
Machinery, equipment and transport equipment	49 731	50 670	43 281	48 623	47 555	45 736
Building and construction	12 109	24 804	14 749	11 044	21 342	13 001
Other gross fixed capital formation.	4 637	5 039	4 602	4 537	4 809	4 253
J Information and communication	18 860	21 767	18 280	18 378	19 632	16 541
Machinery, equipment and transport equipment	4 831	4 232	3 152	5 124	4 446	3 309
Building and construction	5 848	8 536	5 830	5 283	6 483	4 696
Other gross fixed capital formation.	8 180	8 999	9 298	8 003	8 589	8 595
K Financial and insurance	7 713	8 125	9 792	7 701	7 999	9 573
Machinery, equipment and transport equipment	2 460	2 439	4 316	2 594	2 598	4 670
Building and construction	219	114	122	199	98	115
Other gross fixed capital formation.	5 035	5 573	5 354	4 914	5 309	4 962
LA Real estate;rent.of non-res.b.	17 927	8 545	10 669	16 546	7 620	9 791
Machinery, equipment and transport equipment	3 149	3 131	1 949	3 191	3 133	1 885
Building and construction	14 146	4 860	8 278	12 787	4 179	7 456
Other gross fixed capital formation.	631	554	441	620	532	408
LB Dwellings	110 035	96 936	73 986	98 495	83 740	66 306
Machinery, equipment and transport equipment	2 553	2 863	2 734	2 628	2 886	2 699
Building and construction	106 879	93 246	70 486	95 289	80 188	63 073
Other gross fixed capital formation.	604	827	765	595	795	704
M-N Other business services	20 871	21 110	13 941	20 619	20 583	13 430
Machinery, equipment and transport equipment	15 750	15 226	8 455	15 740	15 142	8 302
Building and construction	2 553	2 519	1 871	2 307	2 168	1 653
Other gross fixed capital formation.	2 568	3 365	3 614	2 509	3 208	3 342
O-Q Public adm., education, health	29 853	32 590	31 745	28 162	29 704	29 341
Machinery, equipment and transport equipment	9 553	10 460	9 194	9 732	10 651	9 381
Building and construction	17 855	18 941	19 189	16 094	16 153	16 822
Other gross fixed capital formation.	2 445	3 189	3 362	2 394	3 047	3 108
R-S Arts, entertainm. oth.service	14 541	14 815	10 876	14 463	14 464	10 621
Machinery, equipment and transport equipment	9 355	8 901	5 248	9 673	9 195	5 417
Building and construction	2 845	3 389	3 030	2 578	2 914	2 659
Other gross fixed capital formation.	2 341	2 525	2 598	2 260	2 349	2 366



¹ Chained values do not show additivity. The sum of the components will thus not be equal to the shown totals. The magnitude of the difference is not an indicator of the reliability of the results.

www.statbank.dk/nat06n



Table 267 (page 1 of 2) Supply of goods. 2009

SITC	Danish turnover	Imports incl. customs duties	Exports	Domestic supply	Used for			
					Inter-mediate consumption	Household consumption	Government consumption ¹	Capital formation, stocks
DKK mio.								
0 Food and live animals	153 515	46 860	76 215	124 161	86 401	38 258	78	-576
00 Live animals other than animals of division 03	22 214	191	3 784	18 622	18 167	122	-	333
01 Meat and meat preparations	35 661	7 132	25 507	17 285	6 853	10 366	-	66
02 Dairy products and birds' eggs	32 345	3 372	11 964	23 752	17 728	6 336	-	-312
03 Fish (not marine mammals), crustaceans, molluscs, and aquatic invertebrates preparations and preparations thereof	11 619	9 028	11 808	8 839	8 296	797	-	-254
04 Cereals and cereals preparations	12 721	4 429	4 912	12 238	8 380	4 569	-	-710
05 Vegetables and fruit	7 096	8 497	2 311	13 281	5 831	7 390	-	60
06 Sugars, sugar preparations and honey	3 975	1 838	2 322	3 491	2 018	1 476	-	-4
07 Coffee, tea, cocoa, spices and manufactures thereof	2 556	2 940	1 019	4 477	1 522	2 979	-	-24
08 Feeding stuff for animals (not including unmilled cereals)	14 681	6 840	4 348	17 173	15 843	992	-	338
09 Miscellaneous edible products and preparations	10 648	2 594	8 239	5 002	1 762	3 231	78	-68
1 Beverages and tobacco	12 003	6 004	5 335	12 672	3 963	9 007	-	-298
11 Beverages	8 841	5 252	3 700	10 393	3 403	7 193	-	-204
12 Tobacco and tobacco manufactures	3 162	752	1 635	2 279	560	1 814	-	-94
2 Crude materials, inedible, except fuels	22 329	11 927	14 772	19 485	19 268	3 389	-	-3 173
21 Hides, skins and furskins, raw	5 001	877	4 092	1 786	537	-	-	1 249
22 Oil seeds and oleaginous fruit	2 704	1 176	388	3 491	3 654	11	-	-174
23 Crude rubber (including synthetic and reclaimed)	95	214	150	158	163	-	-	-5
24 Cork and wood	2 010	3 863	629	5 244	4 122	1 279	-	-157
25 Pulp and waste paper	21	327	55	293	293	-	-	-1
26 Textile fibres (other than wool tops and other combed wool) and their wastes (not manufactured into yarn or fabric)	636	207	480	364	370	18	-	-24
27 Crude fertilizers other than those of division 56, and crude minerals (excluding coal, petroleum and precious stones)	2 370	1 128	703	2 796	2 714	113	-	-32
28 Metalliferous ores and metal scrap	362	466	1 836	-1 009	3 176	-	-	-4 184
29 Crude animals and vegetable materials, n.e.s.	9 131	3 669	6 438	6 362	4 240	1 969	-	154
3 Mineral fuels, lubricants and related materials	108 778	54 681	48 349	115 110	95 434	19 195	-	480
32 Coal, coke and briquettes	340	3 304	33	3 610	3 618	71	-	-78
33 Petroleum, petroleum products and related materials	56 785	49 069	38 719	67 135	59 115	7 502	-	518
34 Gas, natural and manufactured	28 993	35	6 971	22 058	19 664	2 353	-	41
35 Electric current	22 661	2 273	2 627	22 307	13 037	9 270	-	-
4 Animal and vegetable oils, fats and waxes	3 366	3 224	2 557	4 033	3 884	190	-	-41
41 Animal oils and fats	1 131	880	1 104	907	889	24	-	-7
42 Fixed vegetable fats and oils, crude, refined or fractionated	1 881	1 505	1 134	2 253	2 118	160	-	-25
43 Animal or vegetable fats and oils, processed; waxes of animal or vegetable origin, inedible mixtures or preparations of animal or vegetable fats and oils, n.e.s.	354	838	318	873	877	5	-	-9
5 Chemicals and related products, n.e.c	74 976	48 615	67 074	56 517	49 242	5 504	4 044	-2 273
51 Organic chemicals	8 847	4 103	7 609	5 341	5 690	30	-	-379
52 Inorganic chemicals	1 117	2 301	606	2 812	2 814	15	-	-17
53 Dyeing, tanning and colouring materials	3 860	2 855	3 024	3 691	3 530	335	-	-174
54 Medical and pharmaceutical products	42 693	16 695	38 854	20 534	13 779	2 971	4 044	-260
55 Essential oils and resinoids and perfume materials; toilet, polishing and cleaning preparations	2 305	4 635	3 059	3 881	2 091	1 878	-	-88

¹ Goods for producing services in the general government sector are included in "Intermediate consumption". Goods for public consumption mainly cover subsidy schemes, e.g. for medical products.



Table 267 (page 2 of 2) Supply of goods. 2009

SITC	Danish turnover	Imports incl. customs duties	Exports	Domestic supply	Used for				
					Inter-mediate consumption	Household consumption	Government consumption ¹	Capital formation, stocks	
DKK mio.									
56	Fertilizers (other than those of group 272)	76	1 131	115	1 092	1 812	8	-	-729
57	Plastics in primary forms	530	6 570	1 215	5 885	6 001	3	-	-119
58	Plastics in non-primary forms	6 033	4 928	4 199	6 762	6 882	113	-	-233
59	Chemical materials and products, n.e.s.	9 513	5 397	8 392	6 518	6 643	151	-	-276
6	Manufactured goods classified chiefly by material	78 873	60 698	43 991	95 580	90 956	5 291	506	-1 172
61	Leather, leather manufactures, n.e.s. and dressed furskins	233	430	246	417	335	135	-	-54
62	Rubber manufactures, n.e.s.	881	3 084	856	3 109	2 941	140	-	28
63	Cork and wood manufactures (excluding furniture)	9 442	4 398	2 960	10 880	10 474	639	-	-234
64	Paper, paperboard and articles of paper pulp, of paper or of paperboard	7 202	9 427	4 354	12 275	11 390	757	506	-379
65	Textile yarn, fabrics, made-up articles, n.e.s., and related products	4 610	6 333	5 004	5 939	4 492	1 264	-	182
66	Non-metallic mineral manufactures, n.e.s.	17 296	6 504	8 693	15 108	14 342	883	-	-117
67	Iron and steel	3 392	10 274	5 076	8 590	8 921	4	-	-336
68	Non-ferrous metals	2 290	4 719	2 043	4 965	5 214	10	-	-259
69	Manufactures of metal, n.e.s.	33 529	15 529	14 760	34 298	32 846	1 456	-	-5
7	Machinery and transport equipment	125 856	144 867	107 508	163 215	79 462	22 675	291	60 788
71	Power generating machinery and equipment	35 127	8 603	20 414	23 315	15 555	24	-	7 736
72	Machinery specialized for particular industries	14 895	10 393	12 982	12 306	3 768	303	-	8 235
73	Metal working machinery	927	1 064	832	1 159	277	-	-	883
74	General industrial machinery and equipment, n.e.s. and machine parts, n.e.s.	34 987	21 935	26 851	30 072	20 914	149	-	9 008
75	Office machines; automatic data processing machines	2 020	17 361	5 683	13 698	2 854	3 197	6	7 642
76	Telecommunications and sound recording and reproducing apparatus and equipment	5 739	14 323	7 301	12 761	6 725	4 021	-	2 016
77	Electrical machinery, apparatus and appliances, n.e.s. and electrical parts thereof (including non-electrical counterparts n.e.s. of electrical household type equipment)	16 522	20 874	13 847	23 549	18 554	3 199	3	1 793
78	Road vehicles (including air-cushion vehicles)	5 973	21 531	10 931	16 572	4 657	11 324	282	310
79	Other transport equipment	9 665	28 784	8 667	29 782	6 158	459	-	23 165
8	Miscellaneous manufactured articles	78 115	73 327	66 646	84 796	46 706	27 660	1 178	9 252
81	Prefabricated buildings, sanitary plumbing, heating and lighting fixtures and fittings, n.e.s.	3 172	2 933	1 710	4 394	2 977	685	6	726
82	Furniture and parts thereof; bedding, mattresses, mattress supports, cushions and similar stuffed furnishings	14 992	7 292	10 754	11 530	2 079	4 697	148	4 606
83	Travel goods, handbags and similar containers	2	1 106	483	625	137	489	-	-1
84	Articles of apparel and clothing accessories	2 808	22 459	15 611	9 656	1 897	8 095	-	-335
85	Footwear	312	4 881	2 785	2 408	423	2 036	7	-59
87	Professional, scientific and controlling instruments and apparatus n.e.s.	13 973	9 634	12 905	10 702	7 508	181	14	2 998
88	Photographic apparatus, equipment and supplies and optical goods, n.e.s.; watches and clocks	1 364	2 506	1 333	2 537	1 618	880	38	1
89	Miscellaneous manufactured articles, n.e.c	41 493	22 517	21 067	42 944	30 067	10 596	965	1 316
9	Commodities and transactions not classified elsewhere in SITC	15	1 491	106	1 400	1 459	-66	-	6
93	Special transactions and commodities not classified according to kind	-	1 388	43	1 345	1 345	-	-	-
96	Coin (other than gold coin) not being legal tender	15	3	10	8	0	0	-	8
97	Gold, non-monetary (excluding gold ores and concentrates)	-	99	53	46	114	-66	-	-2



Table 268 Gross domestic product by regions and provinces. 2011

	Gross domestic product	Gross domestic product per capita ¹	Gross domestic product per capita ¹	Annual average real growth 2005-2011	Average real growth 2011
	current prices DKK mio.	current prices DKK 1 000	the whole country = 100	per cent	
Denmark²	1 791 518	322	100	0,2	1,1
Region Hovedstaden	667 512	391	122	1,2	2,3
Province København By	319 729	458	142	2,0	2,9
Province København Omegn	225 607	435	135	0,7	2,3
Province Nordsjælland	113 243	253	79	0,2	0,5
Province Bornholm	8 932	215	67	-1,4	0,4
Region Sjælland	184 401	225	70	-1,1	0,1
Province Østsjælland	54 786	232	72	-0,7	0,2
Province Vest- og Sydsjælland	129 615	222	69	-1,3	0,0
Region Syddanmark	341 603	284	88	0,3	1,0
Province Fyn	122 245	252	78	0,1	0,3
Province Syddjylland	219 358	306	95	0,4	1,4
Region Midtjylland	364 372	288	90	0,4	1,0
Province Østjylland	236 794	283	88	0,8	1,3
Province Vestjylland	127 578	299	93	-0,1	0,5
Region Nordjylland	162 794	281	87	0,2	2,0
Province Nordjylland	162 794	281	87	0,2	2,0
Outside the regions ³	70 836	•	•	-8,8	-10,5

¹ It is not possible to calculate GDP per capita outside the regions. ² Figures for the whole country correspond to earlier figures – National accounts, November version 2006-2011. ³ Activities that cannot be allocated to any region. Primary activities in the North Sea.

www.statbank.dk/rnat11 and rnat21



Table 269 Input-output table. 2009

	Input in main groups of industries								Total
	Agriculture, fishing, quarrying	Manufacturing	Electricity, gas and water supply	Construction	Wholesale and retail trade; hotels, restaurants	Transport, post and telecommunications	Finance and business activities	Public and personal services	
	DKK mio. in current prices								
Agriculture, fishing, quarrying.	10 617	46 542	12 788	610	357	15	349	287	71 564
Manufacturing	14 707	87 201	2 046	36 068	23 122	7 460	6 198	10 382	187 183
Electricity, gas and water supply	1 864	11 533	6 484	310	6 806	1 680	3 465	9 913	42 055
Construction	1 671	2 436	4 997	2 047	3 827	3 532	31 838	6 642	56 992
Wholesale and retail trade; hotels, restaurants	5 668	40 527	4 640	23 731	76 328	9 419	16 540	28 126	204 979
Transport, post and telecommunications	417	5 431	1 573	771	15 756	24 964	28 260	18 891	96 064
Finance and business activities	10 646	35 374	7 452	24 093	72 764	19 132	97 691	39 527	306 678
Public and personal services	484	2 983	815	423	5 105	4 026	8 012	21 914	43 762
Total use of domestic products	46 072	232 028	40 794	88 054	204 066	70 228	192 354	135 680	1 009 277
Imports incl. customs duties	13 283	145 400	7 339	24 359	180 933	15 596	31 162	28 248	446 320
Taxes on products, net and VAT	2 562	3 437	1 599	1 640	11 582	-353	17 337	27 688	65 492
Uses at market prices	61 917	380 865	49 731	114 053	396 582	85 470	240 854	191 616	1 521 089
Other taxes linked to production, net.	-7 708	-1 620	102	-114	-2 224	-727	14 294	-4 706	-2 702
Compensation of employees	10 025	129 025	11 457	58 752	206 133	50 116	153 475	358 296	977 279
Gross operating surplus and mixed income	51 263	41 092	23 685	17 351	54 907	16 984	195 016	56 418	456 716
Gross output at basic prices	115 496	549 361	84 976	190 042	655 397	151 844	603 639	601 625	2 952 381
	Final demand								Total
	Private consumption	Government consumption	Gross fixed capital formation			Increase in stocks	Exports	Total	
			Machinery and transport equipment	Building and construction	Other capital formation				
	DKK mio. in current prices								
Agriculture, fishing, quarrying.	3 242	41	185	0	1 399	735	38 330	43 932	115 496
Manufacturing	43 480	1 787	30 021	0	1 924	-9 380	294 345	362 178	549 361
Electricity, gas and water supply	33 599	0	0	0	247	-83	9 158	42 921	84 976
Construction	4 135	7 280	128	119 377	181	0	1 950	133 051	190 042
Wholesale and retail trade; hotels, restaurants	182 771	3 556	14 181	0	8 428	-992	242 474	450 418	655 397
Transport, post and telecommunications	25 034	0	503	0	12 927	-85	17 401	55 780	151 844
Finance and business activities	237 906	5 521	4 234	7 562	5 728	0	36 010	296 961	603 639
Public and personal services	79 586	471 068	29	174	4 422	0	2 583	557 863	601 625
Total use of domestic products	609 754	489 253	49 281	127 113	35 256	-9 805	642 252	1 943 104	2 952 381
Imports incl. custom duties	118 476	4 489	52 111	285	4 859	-11 746	116 016	284 490	730 809
Tourism revenues etc.	-35 237	-	-	-	-	-	35 237	-	0
Taxes on products, net. and VAT	129 056	2 173	12 777	20 947	893	-130	-358	165 358	230 850
Use at market prices	822 049	495 915	114 170	148 345	41 007	-21 681	793 147	2 392 952	3 914 040

www.statbank.dk/natio1



Table 270 Fixed capital

	Current prices			2005-prices, chain figures ¹		
	2009	2010*	2011*	2009	2010*	2011*
	DKK mio.					
Total gross capital stock, opening stock	9 901 373	9 934 777	10 062 218	8 673 923	8 756 121	8 738 076
Other machinery and equipment	1 160 534	1 223 414	1 150 850	1 100 841	1 145 263	1 099 584
Transport equipment	458 611	462 808	480 368	452 042	462 415	472 823
Buildings and structures	8 085 572	8 035 634	8 204 838	6 943 099	6 968 462	6 978 188
Dwellings	4 311 899	4 263 353	4 298 663	3 714 058	3 737 187	3 753 074
Non-residential buildings	2 490 114	2 499 194	2 575 112	2 140 346	2 138 451	2 129 037
Other structures	1 283 559	1 273 087	1 331 063	1 089 339	1 093 488	1 097 004
Livestock	7 931	7 982	7 871	7 718	7 847	7 660
Computer software	153 877	168 923	180 421	143 535	148 400	154 709
Entertainment, literary or artistic originals	12 202	12 758	12 716	11 070	11 278	10 977
Mineral exploration	22 645	23 258	25 154	21 879	23 194	23 232
Total consumption of fixed capital	298 461	298 367	297 022	272 329	268 006	265 814
Other machinery and equipment	82 042	80 261	79 260	79 648	79 419	79 313
Transport equipment	34 951	34 180	34 744	34 924	33 516	34 037
Buildings and structures	146 169	144 436	143 014	125 755	121 763	118 280
Dwellings	65 678	63 037	61 313	57 070	54 471	52 357
Non-residential buildings	48 722	48 608	47 305	41 405	40 453	38 900
Other structures	31 769	32 791	34 396	27 305	26 850	26 999
Livestock	0	0	0	0	0	0
Computer software	32 537	36 497	36 939	29 867	31 155	32 293
Entertainment, literary or artistic originals	2 017	2 192	2 178	1 833	1 945	1 890
Mineral exploration	745	800	888	738	760	757
Total net capital stock, opening stock	5 439 765	5 398 808	5 477 620	4 733 812	4 734 691	4 729 118
Other machinery and equipment	637 507	633 733	621 504	601 168	594 137	588 008
Transport equipment	272 079	274 254	288 465	268 849	274 829	281 851
Buildings and structures	4 416 810	4 368 702	4 437 776	3 761 896	3 761 322	3 751 863
Dwellings	2 352 412	2 319 426	2 317 250	2 012 935	2 016 827	2 018 944
Non-residential buildings	1 348 523	1 342 892	1 392 999	1 142 864	1 144 536	1 139 285
Other structures	715 875	706 384	727 528	606 860	600 761	594 586
Livestock	7 931	7 982	7 871	7 718	7 847	7 660
Computer software	86 502	94 223	101 184	81 045	82 670	86 737
Entertainment, literary or artistic originals	6 668	6 912	6 956	6 049	6 110	6 005
Mineral exploration	12 268	13 003	13 864	11 853	12 968	12 805

¹ Chained values do not show additivity. The sum of the components will thus not be equal to the shown totals. The magnitude of the difference is not an indicator of the reliability of the results.



Table 271 Financial accounts. Denmark and rest of the world

	2009	2010*	2011*
	————— current prices, DKK mio. —————		
Financial account (transactions)			
Financial assets	77 704	26 500	-110 575
Monetary gold and Special Drawing Rights (SDRs)	372	-8	501
Currency and deposits	-146 463	39 250	-40 581
Securities other than shares	154 195	-51 728	-54 205
Loans	30 830	35 827	-65 635
Shares and other equity	43 546	-353	37 639
Insurance technical reserves	1 337	55	3 556
Other accounts receivable	-6 113	3 457	8 150
Financial liabilities	133 969	130 616	-4 682
Monetary gold and Special Drawing Rights (SDRs)	•	•	•
Currency and deposits	-166 723	-78 579	-33 071
Securities other than shares	188 758	80 518	-72 317
Loans	34 757	89 009	50 581
Shares and other equity	87 078	32 937	33 616
Insurance technical reserves	1 325	414	895
Other accounts receivable	-11 226	6 317	15 614
Net lending (+)/net borrowing (-)	-56 266	-104 116	-105 893
Other changes in assets account			
Financial assets	-165 115	390 788	182 061
Monetary gold and Special Drawing Rights (SDRs)	•	•	•
Currency and deposits	3 460	47 094	-3 668
Securities other than shares	-220 019	163 924	288 220
Loans	8 448	-390	-6 058
Shares and other equity*	49 037	169 594	-97 180
Insurance technical reserves	758	1 025	1 018
Other accounts receivable	-6 799	9 541	-271
Financial liabilities	-74 891	443 856	340 726
Monetary gold and Special Drawing Rights (SDRs)	•	•	•
Currency and deposits	8 644	11 840	1 953
Securities other than shares	-229 029	194 391	380 534
Loans	-4 173	11 852	-8 925
Shares and other equity*	149 333	212 781	-39 877
Insurance technical reserves	-19	-15	-50
Other accounts receivable	353	13 007	7 091
Closing balance sheet			
Financial assets	4 285 481	4 702 777	4 773 762
Monetary gold and Special Drawing Rights (SDRs)	•	•	•
Currency and deposits	1 098 775	1 185 119	1 140 870
Securities other than shares	1 661 286	1 773 482	2 007 497
Loans	561 297	596 734	525 041
Shares and other equity*	843 584	1 012 825	953 284
Insurance technical reserves	15 474	16 554	21 128
Other accounts receivable	105 065	118 063	125 942
Financial liabilities	4 329 389	4 903 861	5 239 905
Monetary gold and Special Drawing Rights (SDRs)	•	•	•
Currency and deposits	707 886	641 147	610 029
Securities other than shares	1 425 986	1 700 895	2 009 112
Loans	703 352	804 213	845 869
Shares and other equity*	1 331 128	1 576 846	1 570 585
Insurance technical reserves	7 104	7 504	8 349
Other accounts receivable	153 933	173 256	195 961
Net financial assets	-43 908	-201 084	-466 143

Note: Financial accounts figures for the rest of the world are drawn up from the point of view of the rest of the world. Thus, a financial asset held by the rest of the world is a liability for Denmark and vice versa.

www.statbank.dk/nat10, nat11, nat12 and nat13



Table 272 Financial accounts. General government

	2009	2010*	2011*
	————— current prices, DKK mio. —————		
Financial account (transactions)			
Financial assets	68 636	28 369	31 321
Monetary gold and Special Drawing Rights (SDRs)	•	•	•
Currency and deposits	-76 245	-15 863	62 182
Securities other than shares	55 279	12 404	-2 562
Loans	38 576	487	11 367
Shares and other equity	-574	2 564	2 306
Insurance technical reserves	8	-6	59
Other accounts receivable	51 593	28 784	-42 030
Financial liabilities	114 705	75 770	66 261
Monetary gold and Special Drawing Rights (SDRs)	•	•	•
Currency and deposits	324	274	154
Securities other than shares	74 962	76 099	66 906
Loans	7 971	5 908	8 022
Shares and other equity	•	•	•
Insurance technical reserves	•	•	•
Other accounts receivable	31 448	-6 511	-8 822
Net lending (+)/net borrowing (-)	-46 069	-47 402	-34 939
Other changes in assets account			
Financial assets	1 929	24 617	14 433
Monetary gold and Special Drawing Rights (SDRs)	•	•	•
Currency and deposits	233	-	-
Securities other than shares	2 461	9 834	10 655
Loans	260	-341	254
Shares and other equity*	2 162	12 816	2 033
Insurance technical reserves	10	8	11
Other accounts receivable	-3 197	2 300	1 479
Financial liabilities	-12 724	23 202	65 002
Monetary gold and Special Drawing Rights (SDRs)	•	•	•
Currency and deposits	-	-	-
Securities other than shares	-13 502	22 782	64 586
Loans	766	420	417
Shares and other equity*	•	•	•
Insurance technical reserves	•	•	•
Other accounts receivable	10	-	-
Closing balance sheet			
Financial assets	1 086 314	1 139 300	1 185 053
Monetary gold and Special Drawing Rights (SDRs)	•	•	•
Currency and deposits	223 757	207 894	270 076
Securities other than shares	187 198	209 436	217 529
Loans	227 867	228 012	239 632
Shares and other equity*	264 138	279 518	283 857
Insurance technical reserves	591	593	663
Other accounts receivable	182 764	213 847	173 296
Financial liabilities	1 010 167	1 109 139	1 240 403
Monetary gold and Special Drawing Rights (SDRs)	•	•	•
Currency and deposits	14 506	14 780	14 934
Securities other than shares	662 668	761 548	893 040
Loans	184 503	190 831	199 270
Shares and other equity*	•	•	•
Insurance technical reserves	•	•	•
Other accounts receivable	148 491	141 980	133 158
Net financial assets	76 147	30 160	-55 349

Note: The figures are non-consolidated, i.e. outstanding accounts between the individual units in the sector are not eliminated.

www.statbank.dk/nat10, nat11, nat12 and nat13



Table 273 Financial accounts. Corporate sector

	2009	2010*	2011*
	————— current prices, DKK mio. —————		
Financial account (transactions)			
Financial assets	-284 098	1 094 808	596 929
Monetary gold and Special Drawing Rights (SDRs)	-372	8	-501
Currency and deposits	-380 769	-72 698	-35 296
Securities other than shares	114 408	304 805	302 660
Loans	-43 349	208 808	-12 446
Shares and other equity	80 903	557 738	198 046
Insurance technical reserves	867	1 554	3 720
Other accounts receivable	-55 787	94 592	140 747
Financial liabilities	-388 908	931 752	431 259
Monetary gold and Special Drawing Rights (SDRs)	•	•	•
Currency and deposits	-416 704	60 599	19 476
Securities other than shares	46 289	94 007	247 038
Loans	-102 047	104 852	-152 514
Shares and other equity	72 929	512 206	193 428
Insurance technical reserves	79 605	54 535	47 978
Other accounts receivable	-68 981	105 553	75 854
Net lending (+)/net borrowing (-)	104 810	163 055	165 670
Other changes in assets account			
Financial assets	557 152	374 882	-116 958
Monetary gold and Special Drawing Rights (SDRs)	13 484	5 506	2 648
Currency and deposits	4 119	-36 238	4 310
Securities other than shares	-4 496	76 967	179 743
Loans	31 551	183	1 110
Shares and other equity*	541 576	347 197	-279 480
Insurance technical reserves	343	274	375
Other accounts receivable	-29 423	-19 007	-25 665
Financial liabilities	741 302	568 764	-133 636
Monetary gold and Special Drawing Rights (SDRs)	•	•	•
Currency and deposits	5 001	3 436	-2 702
Securities other than shares	28 843	31 278	32 531
Loans	25 010	-17 006	-2 088
Shares and other equity*	624 325	389 155	-367 856
Insurance technical reserves	58 257	158 876	203 056
Other accounts receivable	-133	3 025	3 425
Closing balance sheet			
Financial assets	14 569 448	16 039 138	16 519 109
Monetary gold and Special Drawing Rights (SDRs)	24 590	30 104	32 251
Currency and deposits	2 087 185	1 978 248	1 947 262
Securities other than shares	3 984 628	4 366 400	4 848 803
Loans	4 547 134	4 756 125	4 744 789
Shares and other equity*	3 193 202	4 098 137	4 016 703
Insurance technical reserves	27 157	28 985	33 081
Other accounts receivable	705 553	781 138	896 221
Financial liabilities	16 057 515	17 558 031	17 855 655
Monetary gold and Special Drawing Rights (SDRs)	•	•	•
Currency and deposits	3 527 313	3 591 349	3 608 122
Securities other than shares	3 914 661	4 039 946	4 319 514
Loans	2 026 261	2 114 107	1 959 505
Shares and other equity*	4 039 766	4 941 127	4 766 699
Insurance technical reserves	1 953 550	2 166 961	2 417 995
Other accounts receivable	595 963	704 542	783 820
Net financial assets	-1 488 067	-1 518 893	-1 336 547

Note: The figures are non-consolidated, i.e. outstanding accounts between the individual units in the sector are not eliminated.

www.statbank.dk/nat10, nat11, nat12 and nat13



Table 274 Financial accounts. Household sector

	2009	2010*	2011*
	————— current prices, DKK mio. —————		
Financial account (transactions)			
Financial assets	115 090	45 877	20 562
Monetary gold and Special Drawing Rights (SDRs)	•	•	•
Currency and deposits	20 375	31 605	255
Securities other than shares	-16 262	-15 458	-4 205
Loans	13	466	17
Shares and other equity	36 132	-14 806	-10 947
Insurance technical reserves	78 718	53 346	41 537
Other accounts receivable	-3 887	-9 276	-6 096
Financial liabilities	117 564	57 415	45 400
Monetary gold and Special Drawing Rights (SDRs)	•	•	•
Currency and deposits	-	-	-
Securities other than shares	-2 388	-600	62
Loans	85 389	45 818	27 214
Shares and other equity	-	-	-
Insurance technical reserves	•	•	•
Other accounts receivable	34 564	12 197	18 125
Net lending (+)/net borrowing (-)	-2 475	-11 538	-24 839
Other changes in assets account			
Financial assets	251 838	231 445	165 688
Monetary gold and Special Drawing Rights (SDRs)	•	•	•
Currency and deposits	5 833	4 421	-1 392
Securities other than shares	7 995	-2 859	-1 416
Loans	-	-	-
Shares and other equity*	180 883	72 329	-33 105
Insurance technical reserves	57 127	157 555	201 601
Other accounts receivable	-	-	-
Financial liabilities	-21 365	-19 597	-29 520
Monetary gold and Special Drawing Rights (SDRs)	•	•	•
Currency and deposits	-	-	-
Securities other than shares	-371	-586	-449
Loans	18 655	4 186	5 901
Shares and other equity*	-	-	-
Insurance technical reserves	•	•	•
Other accounts receivable	-39 650	-23 197	-34 972
Closing balance sheet			
Financial assets	4 084 188	4 361 510	4 547 759
Monetary gold and Special Drawing Rights (SDRs)	•	•	•
Currency and deposits	839 988	876 014	874 877
Securities other than shares	186 235	167 917	162 296
Loans	175	640	657
Shares and other equity*	1 069 970	1 127 493	1 083 441
Insurance technical reserves	1 917 432	2 128 333	2 371 471
Other accounts receivable	70 388	61 113	55 017
Financial liabilities	2 603 771	2 641 589	2 657 470
Monetary gold and Special Drawing Rights (SDRs)	•	•	•
Currency and deposits	-	-	-
Securities other than shares	16 032	14 846	14 459
Loans	2 422 356	2 472 360	2 505 475
Shares and other equity*	-	-	-
Insurance technical reserves	•	•	•
Other accounts receivable	165 383	154 383	137 536
Net financial assets	1 480 417	1 719 921	1 890 289

Note 1: The figures are non-consolidated, i.e. outstanding accounts between the individual units in the sector are not eliminated.

www.statbank.dk/nat10, nat11, nat12 and nat13

Note 2: Figures for the household sector includes figures for non-profit institutions serving households (NPISH).



Table 275 Central government finance, summary

	2012*			2013*		
	Operating budget		Capital budget	Operating budget		Capital budget
	Expenditure	Revenue		Expenditure	Revenue	
	DKK mio.					
§ 1. Queen Margrethe II	71.8	-	-	72.1	-	-
§ 2. Members of the Royal House	24.6	-	-	24.7	-	-
§ 3. Danish Parliament	988.3	-	-	1 023.5	-	-
§ 5. Prime Minister's Department	131.3	-	-	141.0	-	-
§ 6. Royal Danish Ministry of Foreign Affairs	15 392.5	328.0	-	15 691.6	300.0	-
§ 7. Ministry of Finance	23 493.4	2 300.1	-	22 986.9	1 572.3	-
§ 8. Ministry of Business and Growth	1 772.1	1 591.4	-	3 206.7	685.7	-
§ 9. Ministry of Taxation	5 510.2	1 313.4	-	5 489.3	1 399.3	-
§ 10. Ministry of Economics and the Interior	204 391.1	8.0	-	195 893.5	8.0	-
§ 11. Ministry of Justice	16 598.3	1 865.0	-	17 675.1	2 350.0	-
§ 12. Ministry of Defence	22 803.6	18.8	501.2	22 788.1	-	325.9
§ 14. Ministry of Housing, Urban and Rural Affairs	1 560.9	-	-	2 059.2	-	-
§ 15. Ministry of Social Affairs and Integration	138 902.3	-	-	143 860.4	-	-
§ 16. Ministry of Health	6 087.1	-	-	5 084.2	-	-
§ 17. Ministry of Employment	72 625.7	-3 909.7	-	69 211.3	12 046.7	-
§ 19. Ministry of Science, Innovation and Higher Education	44 172.9	20.7	-69.9	46 536.0	20.7	-
§ 20. The Ministry of Children and Education	30 214.9	-	-92.1	30 259.5	-	-20.0
§ 21. Ministry of Culture Affairs	6 336.5	23.0	224.1	6 349.0	23.0	198.6
§ 22. Ministry of Equality and Ecclesiastical Affairs	604.1	-	3.7	587.7	-	23.6
§ 23. Ministry of the Environment	2 040.1	34.4	-0.3	1 936.4	32.0	44.3
§ 24. Ministry of Food, Agriculture and Fisheries	2 804.1	-	-6.1	2 701.2	-	37.0
§ 28. Ministry of Transport	6 883.7	203.0	16 390.4	7 642.3	241.8	14 893.0
§ 29. Danish Ministry of Climate, Energy and Building	5 789.5	7 754.7	1 052.2	947.8	4 455.1	0.4
§ 35. General reserves	10 241.6	1 000.0	1 382.9	9 976.5	-	1 383.3
§ 36. Pensions	21 786.0	-	-	22 057.8	-	-
Total	641 226.6	12 550.8	19 386.1	634 201.8	23 134.6	16 886.1
§ 37. Interests	25 605.2	6 671.7	•	24 045.5	2 332.2	•
§ 38. Taxes and duties	15 216.5	594 516.8	•	15 233.0	647 384.8	•
Total	682 048.3	613 739.3	19 386.1	673 480.3	672 851.6	16 886.1
Surplus	•	-68 309.0	-19 386.1	•	-628.7	-16 886.1
Operating, capital and lending budget	•	-87 695.1	•	•	-17 514.8	•
	•	-33 551.5	•	•	-87 695.1	•
§ 40. Bond purchases. etc.	2 833.4	•	•	17 817.0	•	•
§ 41. Changes in investment Portfolio, etc.	•	11 651.3	•	•	-2 622.9	•
§ 42. Repayment of central government debt	-78 877.2	•	•	-37 954.7	•	•
Total	-76 043.8	-76 043.8	•	-20 137.7	-20 137.7	•

Source: Appropriation Act 2013



Table 276 Central government assets and liabilities

	2009	2010	2011
	DKK mio.		
Assets, total	989 196.3	974 107.2	1 010 216.2
Fixed assets	449 494.3	443 248.9	448 976.6
Intangible assets	3 913.9	4 377.3	4 703.0
Tangible assets	207 400.6	204 726.4	209 160.0
Financial assets	238 179.8	234 145.2	235 113.5
Central government bonds for cost-based grants	1 297.4	1 107.6	1 106.9
Credits and long-term claims	139 992.0	140 392.3	142 937.0
Loss on bond issue, government loans	-3 472.9	-10 827.8	-11 036.1
Securities and capital investment	100 363.3	103 473.1	102 105.7
Current assets	400 365.8	396 050.4	432 510.5
Inventories	13 692.3	13 750.7	12 963.4
Work in progress for the account of others	170.8	216.4	254.4
Debtors	106 179.9	94 043.9	85 027.7
Accruals and deferred income	9 238.7	6 422.6	4 848.9
Trade debtors concerning binding commitments	20 408.2	22 305.3	24 146.9
Trade debtors with the Export Credit Fund	768.1	467.9	495.9
Technical debtors counterbalancing long-term debt with the government's corporate payment system	41 768.1	41 577.7	41 971.9
Other debtors	17 137.9	26 351.8	25 740.0
Accounts with Danmarks Nationalbank	193 278.3	177 089.5	222 607.9
Ministry of Finance's ordinary account	193 228.2	177 089.1	222 604.3
Government institutions' accounts with DK's Nationalbank	50.1	0.4	3.6
Liquid funds	-2 276.5	13 824.6	14 453.3
Government institutions' liquid funds	2 925.2	707.5	878.7
Liquid transfers in transit in the band system on 31 Dec.	-5 201.7	13 117.1	13 574.6
Other assets	139 336.2	134 807.9	128 729.1
Assets of special funds	139 336.2	134 807.9	128 729.1
Social Pension Fund	125 242.3	118 982.0	111 305.7
Danish National Advanced Technology Foundation	10 816.7	12 814.1	14 681.7
Other funds	3 277.2	3 011.8	2 741.7
Liabilities, total	989 196.3	974 107.2	1 010 216.2
Net capital	-12 295.5	-95 429.0	-116 036.1
Balance	-12 295.5	-95 429.0	-116 036.1
Provisions for liabilities	96 225.5	103 249.3	95 163.4
Provision for liabilities concerning government operation	2 084.3	1 735.4	2 011.4
Binding commitments	94 141.3	101 513.9	93 152.0
Long-term debt	696 340.2	761 370.0	830 863.1
Domestic government debt	487 915.5	576 413.3	645 927.2
Foreign government debt	139 588.4	114 730.8	111 817.8
Period interest on government debt	1 689.1	2 105.2	2 474.0
Mortgage debt	60.5	57.3	54.1
Other long-term debt	65 200.4	66 108.2	68 499.2
Donations	1 886.4	1 955.2	2 090.8
Short-term debt	69 589.8	70 109.0	71 496.6
Prepayments received for work in progress	452.3	488.9	567.8
Monetary liabilities concerning holiday pay	5 418.2	5 336.6	5 283.2
Suppliers of goods and services	42 230.7	26 425.9	12 400.2
Accruals and deferred income	563.5	1 275.2	899.7
Account with special funds	-	-	-
Debt to the Export Credit Fund	3 534.2	4 841.2	5 672.9
Debt to the Export Lending Scheme	1 314.5	512.1	228.3
Renounced commitment	2 267.7	1 430.8	1 294.9
Liabilities concerning non-governmental deposits with the the government's corporate payment system	13 291.6	11 851.1	11 947.4
Other short-term debt	517.1	17 947.1	33 202.3
Other liabilities	139 336.2	134 807.9	128 729.1
Capital for special funds	139 336.2	134 807.9	128 729.1

Source: Government accounts 2010 and 2011



Table 277 Central government debt and borrowing

	1995	2000	2005	2010*	2011*
	per cent of GDP				
Total central government debt¹	75.5	54.8	39.3	39.2	42.3
Domestic debt	63.7	48.2	33.4	32.7	36.1
Foreign debt	11.8	6.6	5.9	6.5	6.2
	DKK mio.				
Total central government borrowing	149 876	76 095	46 446	171 318	174 143
Domestic debt	137 173	65 672	30 925	160 720	143 775
Foreign debt	12 703	10 423	15 521	10 598	30 368

¹ Government gross debt, nominal values.

Source: Central Government Accounts, Danish Central Bank

www.nationalbanken.dk

Table 278 Central government net borrowing requirement

	2010*	2011*
	DKK mio.	
Net borrowing requirement	93 662	30 202
+Discount on new issue, foreign loans	23	71
+Revaluation of foreign loans, etc. ¹	13 871	-6 503
+Discount on new issues, domestic loans	-10 265	-2 987
+Changes in the Social Pension Fund stock of government loans	2 209	6 160
=Change in central government debt	99 500	26 943
Total indebtedness of central government per 31 December	438 351	465 294
Total domestic debt, net	323 620	353 476
Bonded debt, total	576 413	645 927
a. Ordinary bonds	556 900	606 627
b. Short-term debt certificates	-	-
c. Premium bonds	-	-
d. Swaps	-6 834	-5 686
e. Bonds issued by <i>Fiskeribanken</i>	887	786
f. Treasury bills	25 460	44 200
The Social Pension Fund stock of government bonds	-75 511	-69 351
Liabilities to the Danish Central Bank, net	-177 282	-223 100
Total foreign bonded debt, net	114 731	111 818
Total domestic and foreign borrowing¹	204 967	128 325
Repayment of domestic and foreign loans, total	111 300	97 070
a. Repayment of domestic loans	74 800	64 970
b. Repayment of foreign loans	36 500	32 100
Domestic borrowing, total	194 369	97 957
a. Ordinary bonds	160 720	143 775
b. Borrowing from the Danish Central Bank	33 649	-45 818
Foreign borrowing	10 598	30 368

¹ At nominal value.

Source: Government accounts



Table 279 Expenditure and revenue of social security funds

	Unemployment insurance funds		Employees' Guarantee Funds		All social security funds	
	2011*	2012*	2011*	2012*	2011*	2012*
Current expenditure	58 199	56 778	831	825	59 030	57 603
Consumption expenditure	2 967	3 065	71	79	3 038	3 144
Real interest, etc.	-	-	1	-	1	-
Income transfers to households	41 566	41 338	759	746	42 325	42 084
Income transfers to central government	13 666	12 375	-	-	13 666	12 375
Current revenue	61 231	88 495	1 142	921	62 373	89 416
Interests and dividends, etc.	67	63	-	-	67	63
Compulsory contributions	16 923	16 100	982	733	17 905	16 833
Transfers from central government	44 241	72 332	-	-	44 241	72 332
Other current transfers	-	-	160	188	160	188
Current surplus (gross saving)	3 032	31 717	311	96	3 343	31 813
Capital outlays, net	2 682	31 001	-	-	2 682	31 001
Overall surplus (net lending)	351	716	311	96	662	812

www.statbank.dk/off3

Table 280 Regions account. 2011

	Current account		Capital account		Current- and capital account ¹ Net	Grants from the state	General grants Net
	Expenditure	Revenue ¹	Expenditure	Revenue			
	DDK mio.						
All regions	114 436	16 922	4 861	314	102 061	84 194	19 028
Region Hovedstaden	36 706	6 533	1 534	114	31 593	26 452	5 929
Region Sjælland	16 857	1 719	576	94	15 620	13 036	2 998
Region Syddanmark	24 252	3 117	1 197	14	22 318	18 021	4 137
Region Midtjylland	24 821	3 952	1 215	59	22 025	17 819	4 095
Region Nordjylland	11 800	1 601	339	33	10 505	8 866	1 869

Anm : Expenditure is exclusive VAT.

www.statbank.dk/regr31

¹ Including state refunds.



Table 281 Regions expenditures and financing. 2011

	Region Hovedstaden	Region Sjælland	Region Syddanmark	Region Midtjylland	Region Nordjylland	All regions
	—DDK mio.—					
Health care, total	34 348	15 239	22 311	22 494	10 570	104 962
Health care system	26 865	11 525	17 204	17 015	7 887	80 496
Medial insurance etc.	6 799	3 172	4 646	4 811	2 298	21 726
Other expenditures	57	43	101	169	214	584
Proportion of joint purpose and administration	659	476	389	442	151	2 117
Proportion of interests	-32	23	-29	57	20	39
Social and special education, total	901	716	934	1 314	737	4 602
Social offers and special education	848	684	867	1 245	707	4 351
Other expenditures	23	10	21	38	18	110
Proportion of joint purpose and administration	15	19	37	27	12	110
Proportion of interests	15	3	9	4	-	31
Regional development, total	868	633	482	629	322	2 934
Public transport	490	403	196	300	154	1 543
Cultural services	6	10	3	8	5	32
Industrial development	100	75	70	136	53	434
Education	24	7	28	32	11	102
Environment	145	36	78	48	45	352
Other expenditures	89	81	86	94	50	400
Proportion of joint purpose and administration	15	19	23	10	4	71
Proportion of interests	-1	1	-2	1	-	-
Joint purpose and administration, total	571	294	494	442	191	1 992
Transfers of interests	18	-25	31	-58	-20	-54
Current expenditures, gross	36 706	16 857	24 252	24 821	11 800	114 436
Hospitals, capital	1 500	506	1 102	1 151	303	4 562
Social offers and special education, capital	23	42	83	55	34	237
Other capital expenditures	11	28	12	9	2	62
Current- and capital expenditures, gross	38 240	17 433	25 449	26 036	12 139	119 297
Current revenues, hospitals	4 954	777	1 488	1 947	458	9 624
Current revenues, social offers and special education	891	593	920	1 230	770	4 404
Other current revenues	115	71	291	394	211	1 082
Capital revenues	114	94	14	59	33	314
Current- and capital expenditures, net	32 166	15 898	22 736	22 406	10 667	103 873
Interest, expenditures	120	117	132	109	83	561
Interest, revenues	139	92	164	51	63	509
State refunds	574	278	418	381	162	1 813
Settlement of VAT, net	0	-	-	-	-	0
Financing	31 573	15 645	22 286	22 083	10 525	102 112
Financing, total	31 573	15 645	22 286	22 083	10 525	102 112
Of which:						
Grants from the state	26 452	13 036	18 021	17 819	8 866	84 194
Municipalities contributions	5 929	2 998	4 137	4 095	1 869	19 028
Raising of loans, net ¹	-	29	-524	362	-52	-185
Financial changes ²	-808	-418	652	-193	-158	-925

Note: The regions raising of loans and financial changes are calculated figures, see note 1 and 2.

www.statbank.dk/reg31

¹ Net raising loans are calculated by the regions balance 2010 and 2011Purchase of land and buildings incl. VAT. ² The financial changes are calculated as a residual in comparison to the total net expenditures to financing.



Table 282 Regions current- and capital accounts. 2011

	Health	Social services and special education	Regional development	Joint purpose and administration	Interests etc.	Total
	DDK mio.					
Net expenditure, total	99 010	355	2 729	1 832	-54	103 872
Gross expenditure, total	109 525	4 839	2 935	2 051	-54	119 296
Compensation of employees¹	47 384	3 622	289	1 166	-	52 461
Intermediate consumption	15 824	333	26	180	-	16 363
Food	469	80	1	14	-	564
Fuels and lubricants	1 099	80	5	23	-	1 207
Purchase of land and buildings	57	-1	-	-	-1	56
Acquisitions	1 384	15	1	28	-	1 428
Other consumption goods	12 815	159	19	115	-	13 108
Services etc.	23 328	703	580	896	-	25 507
VAT-exempt services	9 718	200	160	200	-	10 278
Building contractors and craftsmen	2 965	257	44	41	-	3 307
Payments to the state	26	-1	-	-	-	25
Payments to municipalities	383	1	-	-	-	384
Payments to regions	4 929	2	-	-	-	4 931
Other services	5 307	244	376	655	-	6 582
Grants and transfers	20 902	20	1 962	2 035	-	24 919
Civil servant pensions	25	-	18	1 998	-	2 041
Other transfers to persons	20 860	20	-	34	-	20 914
Other grants and transfers	17	-	1 944	3	-	1 964
Financial expenditures	-	12	-	-	-	12
Internal expenditure and revenue	2 087	149	78	-2 226	-54	34
Regarding compensation of employees	98	22	2	257	-	379
Regarding intermediate consumption	802	2	-	21	-	825
Regarding services	3 196	215	79	-2 216	-54	1 220
Internal revenue	-2 009	-90	-3	-288	-	-2 390
Gross revenue, total	10 515	4 484	206	219	-	15 424
Revenue	10 404	4 474	200	219	-	15 297
Rent received	126	13	-	5	-	144
Sales of goods and services	1 049	109	-	23	-	1 181
Payments from the state	477	33	129	9	-	648
Payments from municipalities	961	4 197	1	18	-	5 177
Payments from regions	5 939	4	4	4	-	5 951
Other revenue	1 852	118	66	160	-	2 196
Financial revenues²	111	10	6	0	-	127
Financial revenue	0	-	6	-	-	6
Grants from municipalities	12	1	0	0	-	13
State refunds	85	5	-	-	-	90
Other financial revenue	14	4	-	-	-	18

Note: Current- and capital expenditure is exclusive VAT.

www.statbank.dk/regr11

¹ Income deducted from the Daily Cash Benefits Fund. ² Exclusive state refunds.



Table 283 (page 1 of 2) Municipalities account. 2011

	Current account		Capital account		Current- and capital account ¹ Net	Taxes Net	General grants Net
	Expenditure	Revenue ¹	Expenditure	Revenue			
	DDK mio.						
All municipalities	410 190	114 533	21 563	5 776	311 444	227 177	85 051
Region Hovedstaden	126 374	32 895	7 017	1 343	99 153	80 927	19 092
Copenhagen	39 762	9 775	2 829	564	32 252	24 447	8 518
Frederiksberg	6 403	1 649	321	56	5 019	4 469	694
Albertslund	2 614	794	58	0	1 878	1 154	783
Allerød	1 502	373	55	22	1 162	1 228	3
Ballerup	4 146	1 088	202	33	3 227	2 530	651
Bornholm	3 424	900	282	26	2 780	1 477	1 122
Brøndby	3 045	843	140	20	2 322	1 431	871
Dragør	812	160	33	7	678	688	7
Egedal	2 590	634	82	60	1 978	1 862	176
Fredensborg	2 968	792	160	29	2 307	2 017	278
Frederikssund	3 225	881	124	50	2 418	1 934	550
Furesø	2 625	575	70	27	2 093	2 117	135
Gentofte	5 131	1 698	312	27	3 718	4 782	-1 283
Gladsaxe	5 222	1 691	377	12	3 896	3 050	718
Glostrup	1 784	516	67	5	1 330	1 039	286
Gribskov	2 873	833	61	7	2 094	1 799	395
Halsnæs	2 399	599	154	22	1 932	1 239	608
Helsingør	4 744	1 148	260	51	3 805	2 766	935
Herlev	2 170	543	71	29	1 669	1 219	443
Hillerød	3 618	1 088	60	21	2 569	2 276	377
Hvidovre	3 927	876	138	34	3 155	2 294	851
Høje-Taastrup	3 745	875	209	89	2 990	2 200	911
Hørsholm	1 512	334	56	5	1 229	1 684	-355
Ishøj	2 064	652	103	39	1 476	801	684
Lyngby-Taarbæk	3 624	840	144	82	2 846	2 911	-76
Rudersdal	3 722	1 056	284	3	2 947	3 391	-468
Rødovre	3 056	855	156	5	2 352	1 689	663
Tårnby	2 753	594	121	13	2 267	1 724	549
Vallensbæk	914	233	88	5	764	709	66
Region Sjælland	60 657	17 070	2 906	425	46 068	32 031	14 035
Faxe	2 486	690	102	6	1 892	1 290	602
Greve	3 074	669	143	-8	2 556	2 114	387
Guldborgsund	4 762	1 261	111	30	3 582	2 255	1 334
Holbæk	4 920	1 292	233	27	3 834	2 510	1 307
Kalundborg	3 773	980	117	19	2 891	1 876	974
Køge	4 086	1 101	271	77	3 179	2 220	941
Lejre	1 687	401	262	3	1 545	1 165	186
Lolland	4 088	1 042	130	24	3 152	1 654	1 562
Næstved	5 723	1 648	361	35	4 401	2 974	1 354
Odsherred	2 643	752	66	9	1 948	1 358	623
Ringsted	2 577	843	83	18	1 799	1 340	535
Roskilde	5 998	1 721	322	80	4 519	3 903	630
Slagelse	6 399	2 228	279	18	4 432	2 781	1 704
Solrød	1 210	260	90	47	993	1 004	53
Sorø	2 181	665	70	0	1 586	1 090	543
Stevns	1 460	390	115	12	1 173	857	303
Vordingborg	3 590	1 127	151	28	2 586	1 640	997

Note: Expenditure is exclusive VAT.

www.statbank.dk/regk31and regk11

¹ Including state refunds.



Table 283 (page 2 of 2) Municipalities account. 2011

	Current account		Capital account		Current- and capital account ¹ Net	Taxes Net	General grants Net
	Expenditure	Revenue ¹	Expenditure	Revenue			
	DDK mio.						
Region Syddanmark	88 217	24 449	3 816	1 006	66 578	44 920	21 894
Assens	2 869	685	163	20	2 327	1 521	817
Billund	1 790	444	67	23	1 390	996	384
Esbjerg	9 328	2 977	379	145	6 585	4 456	2 084
Fanø	232	62	34	4	200	160	24
Fredericia	3 919	1 101	221	32	3 007	2 058	904
Faaborg-Midtfyn	3 645	950	193	10	2 878	1 888	994
Haderslev	4 123	1 105	193	45	3 166	2 129	1 068
Kerteminde	1 656	397	56	15	1 300	902	397
Kolding	6 200	1 612	311	88	4 811	3 548	1 292
Langeland	1 141	274	34	21	880	531	376
Midelfart	2 774	879	83	5	1 973	1 459	561
Nordfyns	2 030	469	42	9	1 594	1 090	569
Nyborg	2 337	569	123	29	1 862	1 214	608
Odense	14 402	4 041	703	156	10 908	6 752	3 998
Svendborg	4 644	1 459	141	16	3 310	2 272	1 056
Sønderborg	5 274	1 251	260	59	4 224	2 829	1 394
Tønder	2 931	758	84	14	2 243	1 371	925
Varde	3 410	883	155	15	2 667	1 909	778
Vejen	2 804	666	147	17	2 268	1 519	752
Vejle	7 839	2 635	285	212	5 277	3 885	1 574
Ærø	581	185	32	51	377	245	166
Aabenraa	4 288	1 047	110	20	3 331	2 186	1 173
Region Midtjylland	91 061	27 348	5 300	1 345	67 668	47 584	19 591
Favrskov	2 893	714	109	17	2 271	1 747	573
Hedensted	2 961	755	100	23	2 283	1 621	689
Herning	5 981	1 761	354	85	4 489	3 083	1 364
Holstebro	4 218	1 343	108	25	2 958	2 134	869
Horsens	6 160	1 823	375	64	4 648	2 982	1 656
Ikast-Brande	2 906	849	99	4	2 152	1 496	691
Lemvig	1 565	433	78	9	1 201	819	369
Norddjurs	2 769	739	202	13	2 219	1 341	804
Odder	1 421	379	106	43	1 105	833	272
Randers	7 176	2 021	354	68	5 441	3 540	1 815
Ringkøbing-Skjern	3 997	1 078	163	11	3 071	2 195	826
Samsø	342	91	15	8	258	153	109
Silkeborg	5 738	1 435	220	45	4 478	3 506	1 142
Skanderborg	4 086	1 333	112	28	2 837	2 246	608
Skive	3 521	1 029	223	78	2 637	1 726	906
Struer	1 616	462	60	7	1 207	811	408
Syddjurs	2 790	656	95	35	2 194	1 609	591
Viborg	6 357	1 675	405	67	5 020	3 577	1 283
Aarhus	24 564	8 772	2 122	715	17 199	12 165	4 616
Region Nordjylland	43 881	12 771	2 524	1 657	31 977	21 715	10 439
Brønderslev	2 747	770	78	12	2 043	1 268	721
Frederikshavn	4 558	1 116	254	23	3 673	2 339	1 215
Hjørring	4 838	1 226	188	54	3 746	2 453	1 264
Jammerbugt	2 925	851	67	13	2 128	1 405	729
Læsø	181	42	10	3	146	72	76
Mariagerfjord	3 074	848	122	25	2 323	1 560	757
Morsø	1 645	425	73	8	1 285	775	505
Rebild	1 847	468	49	12	1 416	1 038	409
Thisted	3 457	1 065	189	35	2 546	1 679	828
Vesthimmerlands	3 006	920	108	21	2 173	1 413	798
Aalborg	15 603	5 040	1 386	1 451	10 498	7 713	3 137


Table 284 Municipalities current and capital account, net. 2011

Sum of municipalities situated in	Region Hoved- staden	Region Sjælland	Region Syd- danmark	Region Midt- jylland	Region Nord- jylland	All munici- palities
	DKK mio.					
Current item total, net	106 273	50 810	74 708	74 787	36 404	342 982
Children and young people	29 698	13 821	18 726	20 302	9 343	91 890
Primary and lower secondary etc. ¹	14 903	8 102	10 865	11 709	5 489	51 068
Day care and clubs for children and young people	10 685	3 590	5 163	5 770	2 332	27 540
Preventative measures for children and young people with special needs	1 260	623	734	845	370	3 832
Residential care and foster homes etc. ²	2 850	1 506	1 964	1 978	1 152	9 450
Elderly and adult with special needs	19 681	8 689	13 274	12 820	7 105	61 569
Care etc. of elder and handicapped ³	11 585	5 136	8 118	7 729	4 456	37 024
Preventative measures for elder and handicapped	1 154	657	899	1 923	648	5 281
Residential care to elder and adults with special needs ⁴	4 880	1 885	2 695	1 796	1 251	12 507
Relief measures, consumer goods, interior design, travel expenses	979	566	848	683	372	3 448
Activity- and gathering offers and protected employment	1 083	445	714	689	378	3 309
Health expenses	5 732	2 590	3 900	3 755	1 809	17 786
Liability services	27 245	15 091	23 444	23 050	10 681	99 511
Other areas	23 917	10 619	15 364	14 860	7 466	72 226
State refunds, total	12 794	7 225	10 939	11 072	5 295	47 325
Capital items total, net	5 672	2 482	2 810	3 955	866	15 785
Children and young people	2 423	1 132	1 012	1 175	525	6 267
Elder and adults with special needs	624	296	328	839	193	2 280
Other areas	2 625	1 054	1 470	1 941	148	7 238
Interest, expenditures	917	459	589	614	315	2 894
Interest, revenues	1 115	315	372	289	199	2 290
General and special grants, total ⁵	19 092	14 035	21 894	19 591	10 439	85 051
Settlement of VAT, net	23	-19	27	49	3	83
Financing	79 885	32 152	44 928	48 452	21 655	227 072
Financed by:						
Taxes	80 927	32 031	44 919	47 584	21 716	227 177
Raising of loans	4 497	1 033	1 756	1 965	652	9 903
Repayments on loans	5 756	1 118	1 436	1 438	620	10 368
Raising of loans, net	-1 259	-85	320	527	32	-465
Financing, total	79 668	31 946	45 239	48 111	21 748	226 712
Financial changes	217	206	-311	341	-93	360
Of which:						
Consumption of liquid assets	-961	-867	-241	143	90	-1 836
Other financial changes	1 178	1 073	-70	198	-183	2 196

Note: Expenditure is exclusive VAT.

www.statbank.dk/regk31

¹ Including: After school care, special education, special pedagogical arrangement etc. ² Including: Secured 24-hour care centers for children and young people. ³ Home nursing care and other personal and practical help. ⁴ Senior homes, nursing homes, protected homes and other living arrangements to adults with special needs. ⁵ Including: The municipalities grant to the regions that are not defined by an activity on 7.4 DDK bn.



Table 285 Municipalities current- and capital accounts. 2011

	Housing and community amenities	Public utilities etc.	Traffic and infra- structure etc.	Education and culture	Health care	Social services and employ- ment	Joint expen- ditures and admini- stration etc.	Total
	DDK mio.							
Net expenditures, total	6 065	-658	11 666	65 962	18 013	223 677	34 045	358 770
Gross expenditures, total	12 147	10 225	15 199	76 973	18 384	260 901	37 924	431 753
Compensation of employees¹	2 942	683	3 082	44 413	3 922	85 242	23 760	164 044
Consumption goods	1 836	2 617	2 193	4 954	306	9 131	1 452	22 489
Foods	37	2	19	398	9	1 750	178	2 393
Fuels and lubricants	527	2 155	818	1 418	26	1 387	298	6 629
Purchase of land and buildings incl. VAT	52	-	-	-	-	-	-	52
Purchase of land and buildings excl. VAT	575	10	31	297	-4	343	46	1 298
Acquisitions	91	42	244	200	37	520	-63	1 071
Other consumption goods	554	408	1 081	2 641	238	5 131	993	11 046
Services etc.	6 362	6 843	7 526	22 478	13 636	60 981	9 662	127 488
VAT-exempt services	1 221	1 447	1 080	5 092	747	18 487	931	29 005
Building contractors and craftsmen	2 862	974	4 384	4 657	204	4 944	934	18 959
Payments to the state	64	11	88	4 659	2	8 177	255	13 256
Payments to municipalities	83	-	21	4 204	58	15 711	69	20 146
Payments to regions	11	-	71	415	12 395	3 951	3	16 846
Other services	2 121	4 411	1 882	3 451	230	9 711	7 470	29 276
Grants and transfers	927	53	2 773	4 831	510	104 801	3 887	117 782
Civil servant pensions etc.	-	47	1	37	2	3	3 613	3 703
Transfers to persons	32	1	4	1 366	505	102 537	131	104 576
Other grants and transfers	895	5	2 768	3 428	3	2 261	143	9 502
Financial expenditures	15	29	1	-	-	9	-	54
Internal expenditure and revenue	65	-	-376	297	10	737	-837	-104
Regarding compensation of employees	186	-	676	160	8	1 101	67	2 198
Regarding intermediate consumption	6	-	17	21	2	103	34	183
Regarding services	208	-	511	771	26	3 298	321	5 135
Internal revenue	-335	-	-1 580	-655	-26	-3 765	-1 259	-7 620
Gross revenues, total	6 082	10 883	3 533	11 011	371	37 224	3 879	72 983
Revenues	5 869	10 864	3 504	10 898	297	35 916	3 661	71 009
Rent received	769	-	17	91	5	2 169	37	3 088
Sales of goods and services	826	5 570	1 974	4 169	52	12 452	522	25 565
Payments from the state	141	25	56	388	41	603	197	1 451
Payments from municipalities	97	-	11	4 147	71	16 370	176	20 872
Payments from regions	93	-	4	68	11	396	15	587
Other revenues	3 943	5 269	1 442	2 035	117	3 926	2 714	19 446
Financial revenues²	213	19	29	113	74	1 308	218	1 974
State refunds	198	-	22	99	72	1 156	194	1 741
Other financial revenues	15	19	7	14	2	152	24	233

Note: Current- and capital expenditures is exclusive VAT.

www.statbank.dk/regk11

¹ Income deducted from the Daily Cash Benefits Fund. ² Exclusive state refunds.



Table 286

Taxpayers, income and tax

	2010	2011*
	———— thousand persons ————	
Taxable population		
Danish population, end of year	5 561	5 581
Of whom subject to assessment	4 938	4 963
	———— DKK mio. ————	
Provisional taxes		
+Total	357 352	365 545
A-tax	313 343	322 197
B-tax	14 505	14 053
Share tax	9 258	7 682
Voluntary payments	15 123	16 104
Section 55 refunds	-234	-299
Compensation for the green check	4 960	4 921
Compensation for senior allowance	397	887
Underpaid tax from previous years, etc.		
÷Underpaid tax from previous years	4 371	3 979
+Retained profits paid	2 631	2 094
Finally assessed incomes		
+Taxable income (gross)	975 709	993 756
+Income tax relief	187 787	189 648
+Net taxable income	787 922	804 108
Final taxes		
+Total	343 151	350 194
Central government tax (State tax)	51 317	52 339
Ordinary income tax, lower limit	34 140	34 465
Additional income tax, upper limit	16 277	16 641
Equalization tax	•	239
Healthcare contribution	62 661	63 973
Tax on limited taxation	1 923	2 213
Church tax	5 605	5 711
Municipal tax	194 067	197 741
Corporation tax	2 793	3 174
Share tax	12 563	12 827
Imputed income from owner-occupied dwelling	12 619	12 864
Compensation for senior allowance	-397	-887
Labour market contributions	72 269	73 201
Compensation for the green check	-4 960	-4 921
Results of final assessment		
Tax overpayment minus underpayment	12 461	13 466
Tax overpayment	20 696	21 733
Tax underpayment	8 235	8 267
Tax overpayment after set-offs minus underpayment after set-offs (incl. interest, etc.)	11 637	13 475
Tax overpayment, etc. for refunding	20 674	21 395
Tax underpayment, etc. for collection	9 037	7 920
For collection with provisional tax	4 943	4 518
For collection separately	4 094	3 402

www.statbank.dk/pskat1



Table 287 (page 1 of 2) Local government taxation

Municipal name	Municipal tax rate		Church tax rate		Budgeted municipal income tax revenue		Increase
	2012	2013	2012	2013	2012	2013	
	per cent				DKK mio.		per cent
All Denmark	24.92	24.91	0.89	0.88	204 818	217 969	6.4
Region Hovedstaden	24.25	24.26	0.72	0.71	68 998	73 893	7.1
101 Copenhagen	23.80	23.80	0.80	0.80	19 882	21 159	6.4
147 Frederiksberg	23.10	23.10	0.50	0.50	4 257	4 611	8.3
165 Albertslund	24.60	25.10	0.85	0.85	981	1 037	5.7
201 Allerød	25.30	24.30	0.58	0.58	1 177	1 238	5.3
151 Ballerup	25.50	25.50	0.75	0.75	1 949	2 061	5.7
400 Bornholm	25.90	25.90	0.93	0.93	1 404	1 479	5.4
153 Brøndby	24.50	24.50	0.80	0.80	1 226	1 267	3.3
155 Dragør	24.80	24.80	0.64	0.63	625	685	9.6
240 Egedal	25.70	25.70	0.76	0.76	1 805	1 965	8.8
210 Fredensborg	25.40	25.40	0.66	0.66	1 762	1 897	7.7
250 Frederikssund	25.90	25.40	0.96	0.96	1 772	1 832	3.4
190 Furesø ¹	26.00	25.00	0.65	0.65	1 941	2 022	4.2
157 Gentofte	22.80	22.80	0.44	0.42	4 165	4 397	5.6
159 Gladsaxe	24.10	24.10	0.75	0.75	2 556	2 751	7.6
161 Glostrup	24.20	23.90	0.67	0.67	855	885	3.6
270 Gribskov	24.50	24.70	0.94	0.94	1 478	1 616	9.4
260 Halsnæs	25.40	25.70	0.85	0.85	1 102	1 175	6.6
217 Helsingør	25.40	25.40	0.76	0.72	2 429	2 627	8.1
163 Herlev	23.70	23.70	0.77	0.77	1 007	1 060	5.3
219 Hillerød	25.60	25.60	0.69	0.69	2 005	2 197	9.6
167 Hvidovre	25.60	25.60	0.72	0.72	1 955	2 067	5.8
169 Høje-Taastrup	24.70	24.70	0.85	0.85	1 775	1 862	4.9
223 Hørsholm	23.50	23.50	0.62	0.62	1 347	1 522	13.0
183 Ishøj	25.00	25.00	0.90	0.90	714	741	3.7
173 Lyngby-Taarbæk	23.70	23.70	0.63	0.62	2 498	2 768	10.8
230 Rudersdal	22.70	22.70	0.56	0.56	2 787	3 206	15.0
175 Rødovre	25.70	25.70	0.72	0.72	1 455	1 527	5.0
185 Tårnby	23.50	23.50	0.61	0.61	1 508	1 594	5.7
187 Vallensbæk	25.10	25.10	0.68	0.68	582	645	10.7
Region Sjælland	25.32	25.30	0.97	0.97	29 919	31 610	5.7
320 Faxe	26.10	26.10	1.08	1.08	1 271	1 338	5.3
253 Greve	23.90	23.90	0.73	0.73	1 910	2 037	6.6
376 Guldborgsund	25.80	25.80	1.17	1.16	2 121	2 216	4.5
316 Holbæk	25.10	25.10	0.96	0.96	2 468	2 618	6.1
326 Kalundborg	25.30	25.00	1.01	1.01	1 726	1 803	4.5
259 Køge	24.90	24.90	0.87	0.87	2 095	2 229	6.4
350 Lejre	25.40	25.40	1.06	1.06	1 080	1 163	7.8
360 Lolland	26.70	26.70	1.23	1.23	1 617	1 653	2.3
370 Næstved	25.00	25.00	0.98	0.98	2 842	3 002	5.7
306 Odsherred	26.60	26.60	0.98	0.98	1 164	1 228	5.6
329 Ringsted	26.70	26.70	0.99	0.98	1 246	1 315	5.6
265 Roskilde	25.20	25.20	0.84	0.84	3 438	3 702	7.7
330 Slagelse	24.70	24.70	0.96	0.96	2 631	2 753	4.7
269 Solrød	24.80	24.80	0.90	0.82	882	932	5.7
340 Sorø	26.40	26.40	0.95	0.95	1 110	1 155	4.1
336 Stevn	25.00	25.00	1.10	1.10	775	825	6.5
390 Vordingborg	25.20	25.20	1.02	1.02	1 546	1 639	6.0
Region Syddanmark	25.27	25.26	0.92	0.92	41 877	44 258	5.7
420 Assens	26.10	26.10	0.97	0.95	1 453	1 513	4.2
530 Billund	25.20	25.20	0.89	0.89	921	973	5.6
561 Esbjerg	25.40	25.40	0.81	0.81	4 150	4 424	6.6

¹ There are special conditions applying to the municipality of Furesø. The tax rate of Farum is 27.20 in 2012 and 26.20 in 2013, while the tax rate of Værløse is 24.90 in 2012 og 23.90 in 2013.



Table 287 (page 2 of 2) Local government taxation

Municipal name	Municipal tax rate		Church tax rate		Budgeted municipal income tax revenue		Increase
	2012	2013	2012	2013	2012	2013	
	per cent				DKK mio.		per cent
563 Fanø	24.30	24.30	1.14	1.14	117	126	7.4
607 Fredericia	25.50	25.50	0.88	0.88	1 855	1 966	6.0
430 Faaborg-Midtfyn	26.10	26.10	1.05	1.05	1 798	1 885	4.8
510 Haderslev	26.50	26.50	0.95	0.95	2 014	2 112	4.9
440 Kerterminde	26.10	26.20	1.00	1.00	859	912	6.2
621 Kolding	25.00	25.00	0.94	0.94	3 165	3 399	7.4
482 Langeland	27.80	27.80	1.15	1.15	481	496	3.1
410 Middelfart	25.80	25.80	0.95	0.95	1 377	1 474	7.0
480 Nordfyns	26.10	26.10	1.04	1.04	1 007	1 055	4.8
450 Nyborg	26.40	26.40	1.15	1.15	1 154	1 208	4.7
461 Odense	24.50	24.50	0.68	0.68	6 487	6 856	5.7
479 Svendborg	26.80	26.80	1.06	1.06	2 107	2 204	4.6
540 Sønderborg	25.20	25.20	0.93	0.93	2 694	2 812	4.4
550 Tønder	25.30	25.30	1.20	1.20	1 292	1 317	2.0
573 Varde	25.10	25.10	1.02	1.02	1 716	1 813	5.7
575 Vejen	25.20	25.20	1.06	1.06	1 364	1 462	7.2
630 Vejle	23.40	23.40	0.91	0.90	3 609	3 879	7.5
492 Ærø	26.10	26.10	1.10	1.10	224	234	4.2
580 Aabenraa	25.40	25.40	0.95	0.95	2 032	2 139	5.3
Region Midtjylland	25.10	25.11	0.94	0.94	44 038	47 088	6.9
710 Favrskov	25.70	25.70	1.03	1.02	1 659	1 787	7.8
766 Hedensted	25.40	25.40	1.08	1.07	1 575	1 671	6.1
657 Herning	24.90	24.90	0.99	0.99	2 896	3 090	6.7
661 Holstebro	25.30	25.30	1.08	1.08	1 983	2 103	6.1
615 Horsens	25.20	25.20	0.89	0.89	2 810	2 998	6.7
756 Ikast-Brande	25.10	25.10	1.00	1.00	1 339	1 425	6.4
665 Lemvig	25.20	25.20	1.27	1.27	743	829	11.6
707 Norddjurs	25.10	25.10	1.00	1.00	1 242	1 311	5.5
727 Odder	25.10	25.10	1.00	1.00	764	823	7.7
730 Randers	25.60	25.60	0.89	0.89	3 303	3 483	5.4
760 Ringkøbing-Skjern	24.70	24.70	1.05	1.05	1 983	2 058	3.8
741 Samsø	26.00	26.00	1.50	1.48	137	139	1.9
740 Silkeborg	25.50	25.50	0.95	0.95	3 217	3 398	5.6
746 Skanderborg	25.70	25.70	0.86	0.86	2 160	2 357	9.1
779 Skive	25.50	25.50	1.00	1.00	1 652	1 716	3.9
671 Struer	24.90	24.90	1.20	1.20	758	805	6.1
706 Syddjurs	25.30	25.70	1.00	1.00	1 421	1 550	9.1
791 Viborg	25.80	25.80	0.95	0.95	3 373	3 592	6.5
751 Aarhus	24.40	24.40	0.79	0.79	11 025	11 954	8.4
Region Nordjylland	25.62	25.68	1.10	1.10	19 987	21 121	5.7
810 Brønderslev	26.90	26.90	1.10	1.10	1 222	1 285	5.2
813 Frederikshavn	25.60	25.60	1.03	1.03	2 148	2 253	4.9
860 Hjørring	25.40	25.60	1.19	1.19	2 211	2 342	5.9
849 Jammerbugt	25.30	25.70	1.20	1.20	1 276	1 362	6.7
825 Læsø	25.60	25.80	1.30	1.30	61	68	10.9
846 Mariagerfjord	25.70	25.90	1.15	1.15	1 459	1 543	5.7
773 Morsø	25.30	25.30	1.20	1.20	711	727	2.2
840 Rebild	25.10	25.10	1.20	1.20	993	1 041	4.9
787 Thisted	25.50	25.50	1.28	1.28	1 492	1 577	5.7
820 Vesthimmerland	27.20	27.10	1.18	1.18	1 303	1 357	4.2
851 Aalborg	25.40	25.40	0.98	0.98	7 110	7 566	6.4



Table 288 Taxation of corporations. 2011

	Less than DKK 100 000		DKK 100 000-1 mio.		More than DKK 1 mio.		Total	
	Number of companies	Amount in DKK mio.	Number of companies	Amount in DKK mio.	Number of companies	Amount in DKK mio.	Number of companies	Amount in DKK mio.
All industries	34 818	982	15 101	4 542	2 725	34 094	52 644	39 618
Agriculture, forestry and fishing	418	11	252	81	45	136	715	228
Mining and quarrying	18	1	17	7	21	5 720	56	5 709
Manufacturing	1 631	56	1 310	447	484	8 534	3 425	9 037
Manufacture of food products, beverages and tobacco	122	4	99	32	58	450	279	486
Textiles and leather products	75	3	54	18	19	74	148	95
Wood and paper products and printing	195	7	101	30	26	72	322	109
Oil refinery etc.	1	0	0	0	0	0	1	0
Manufacture of chemicals	28	1	18	7	26	337	72	345
Pharmaceuticals	11	0	9	3	9	3 416	29	3 419
Manufacture of plastic, glass and concrete	100	3	101	36	53	843	254	882
Basic metals and fabricated metal products	335	12	318	107	67	228	720	347
Manufacture of electronic components	66	2	75	30	42	675	183	707
Electrical equipment	58	2	61	23	25	186	144	210
Manufacture of machinery	201	7	211	77	91	854	503	938
Transport equipment	39	1	19	7	12	42	70	51
Manufacture of furniture and other manufacturing	400	14	244	78	56	1 356	700	1 447
Electricity, gas and steam supply	130	2	32	10	13	373	175	384
Water supply, sewerage and waste management	50	2	49	16	17	55	116	74
Construction	3 500	117	1 674	460	137	401	5 311	978
Wholesale and retail trade	5 220	172	3 540	1 141	816	7 561	9 576	8 874
Transportation	740	22	489	163	103	718	1 332	903
Accommodation and food service activities	642	20	257	73	25	92	924	185
Information and communication	2 191	72	966	283	178	2 431	3 335	2 786
Publishing, television and radio broadcasting	401	11	189	60	47	333	637	404
Telecommunications	46	1	22	7	4	1 406	72	1 414
IT and information service activities	1 744	59	755	216	127	692	2 626	967
Financial and insurance	4 512	96	1 317	421	305	5 573	6 134	6 089
Real estate activities	2 711	71	916	252	103	342	3 730	665
Knowledge-based services	4 232	130	1 801	511	219	794	6 252	1 436
Consultancy etc.	3 332	103	1 366	387	161	541	4 859	1 031
Scientific research and development	55	1	21	7	14	124	90	132
Advertising and other business services	845	25	414	117	44	129	1 303	272
Travel agent, cleaning and other operational services	1 380	41	560	161	85	473	2 025	675
Public administration, defence and compulsory social security	14	0	6	2	4	228	24	230
Education	234	7	64	21	1	2	299	30
Human health and social work	999	39	759	197	32	52	1 790	288
Human health activities	898	37	709	182	27	42	1 634	261
Residential care	101	3	50	15	5	10	156	28
Arts, entertainment and recreation activities	221	6	78	24	12	51	311	81
Other service activities	620	17	165	42	28	142	813	201
Activities of households as employers of domestic personnel	-	-	-	-	-	-	-	-
Activities of extraterritorial organizations and bodies	-	-	-	-	-	-	-	-
Activity not stated	5 355	100	849	231	97	435	6 301	766

Note: Size of tax levied including all supplements, reductions and allowances.

www.statbank.dk/selsk1, selsk2 and selsk3



Table 289 Customs and excise duties

	2010	2011	2012
	DKK mio.		
Customs and import duties	3 277	3 222	3 017
Value added tax	169 832	174 038	177 392
Duty on wage and salary costs	4 921	5 703	5 864
Duties on motor vehicles	25 264	25 391	24 898
Weight duty	10 019	9 873	10 042
Registration duty	13 390	13 760	13 125
Duty on third-party liability insurance	1 855	1 758	1 731
Taxes on energy products	40 283	41 953	40 350
Petrol	8 132	7 719	7 457
Certain petroleum products	9 086	9 252	9 098
Electricity	10 204	11 989	11 155
Coal	2 450	2 418	2 473
Natural gas	4 418	4 429	4 005
CO ₂	5 757	5 897	5 676
Nitrogen oxides	189	202	443
Sulphur	47	47	43
Pollution taxes	2 140	1 890	2 055
Certain retail containers	1 060	936	1 008
Insecticides, herbicides, etc.	461	477	551
Waste	260	125	166
CFC	56	71	69
Chlorinated solvents	0	0	0
Nickel/cadmium batteries	4	3	1
Effluent charges	201	185	179
Nitrogen	23	19	13
PVC and phthalates	23	22	20
Mineral phosphorus	52	52	48
Duties on spirits, wine and beer	3 004	3 069	3 658
Spirits	1 009	1 073	1 065
Wine	1 072	1 063	1 520
Beer	901	882	1 035
Surcharge on alcoholic soft drinks	21	51	38
Duties on non-alcoholic beverages	647	630	786
Coffee	255	247	278
Tea	7	8	9
Mineral water	385	375	499
Duties on chocolate, sugar confection., etc.	1 850	1 913	2 306
Chocolate, sugar confectionary	1 646	1 708	2 032
Ice-cream	204	205	274
Saturated fat	•	171	1 243
Duties on tobacco	8 339	7 495	8 780
Cigarettes, smoking tobacco, etc.	8 278	7 434	8 688
Cigars, cheroots and cigarillos	33	32	54
Cigarette paper	28	29	38
Other duties	2 670	2 614	2 735
Electric bulbs, etc.	117	118	116
Raw materials	114	142	138
Piped water	1 364	1 327	1 503
Insurance of pleasure boats	120	110	106
Casinos	176	181	196
Slot machines	659	628	662
Other duties	120	108	14
Customs and excise duties, total	262 227	268 089	273 081
European Union	-2 341	-2 418	-2 247



Table 290 Public sector. 2011

	General government sector	Public quasi corporations	Public corporations	The public sector
DKK mio.				
Production account				
Output	534 942	24 380	131 706	691 029
Intermediate consumption	174 848	12 771	79 624	267 242
Gross value added	360 094	11 610	52 082	423 786
Consumption of fixed capital	34 278	3 292	17 606	55 175
Net value added	325 817	8 318	34 476	368 611
Generation of income account				
Gross value added	360 094	11 610	52 082	423 786
Taxes less subsidies on production	-4 642	131	-737	-5 247
Taxes on production	-4 642	128	..	-4 514
Production subsidies	..	3	737	740
GDP at factor cost	364 736	11 478	52 819	429 034
Compensation of employees	330 458	4 925	27 097	362 480
Gross operating surplus	34 278	6 554	25 723	66 554
Consumption of fixed capital	34 278	3 292	17 606	55 175
Net operating surplus	0	3 262	8 117	11 379
Allocation of primary income account				
Gross operating surplus	34 278	6 554	25 723	66 554
Interest and dividends	39 665	861	27 464	67 990
Taxes on production and imports	301 146	301 146
Current taxes on income, wealth, etc.	531 300	531 300
Actual contributions to social benefits	18 793	..	5 875	24 668
Imputed contributions to social benefits	16 321	16 321
International cooperation	2 518	11	..	2 529
Other current transfers	14 721	201	..	14 922
Gross primary income	958 740	7 627	59 062	1025 429
Interest and dividends	37 581	2 515	22 122	62 219
Subsidies	45 652	150	..	45 802
Current taxes on income, wealth, etc.	2 856	2 856
Social contributions	312 317	21	4 508	316 847
International cooperation	25 563	25 563
Other current transfers	18 849	175	..	19 025
Gross total expenditure	439 962	2 862	29 487	472 311
Gross disposable income	518 779	4 765	29 575	553 118
Consumption of fixed capital	34 278	3 292	17 606	55 175
Net disposable income	484 501	1 473	11 969	497 943
Redistribution of income account				
Gross disposable income	518 779	4 765	29 575	553 118
Adj. for the change in net equity of households and pension funds, consumption expenditure	508 122	508 122
Change in households net worth	1 352	1 352
Gross saving	10 656	4 765	28 224	43 645
Consumption of fixed capital	34 278	3 292	17 606	55 175
Net saving	-23 621	1 473	10 618	-11 531
Capital account				
Gross saving	10 656	4 765	28 224	43 645
Capital taxes	4 694	4 694
Other capital transfers	10 446	87	..	10 533
Total gross saving and capital transfers	25 797	4 852	28 224	58 872
Gross fixed capital formation	38 616	6 219	18 058	62 893
Changes in stocks	..	0	0	0
Acquisitions of land and rights, net	-119	-2 016	233	-1 902
Investment subsidies	22 239	26	..	22 266
Other capital transfers	0	10	..	10
Of which, public sub-sector	0	-6	..	-6
Net lending/borrowing	-34 939	613	9 933	-24 393



Table 291 Expenditure and revenue of general government

	2010*	2011*	2012*
	DKK mio.		
Current outlays, total	960 117	968 049	993 727
Compensation of employees	333 941	330 458	334 918
Intermediate consumption	174 563	174 848	180 850
Other taxes on production and other subsidies on production, net	-5 248	-4 642	-5 064
Social benefits in kind	27 806	27 423	27 782
Real interest, etc.	36 934	37 581	36 393
Subsidies	44 440	45 652	47 751
Other current transfers	347 682	356 729	371 096
Current revenue, total	955 095	978 706	994 580
Sales of goods and services	55 140	54 243	53 877
Income on wealth, earned income, etc.	37 112	39 665	34 672
Taxes on production and import	292 687	301 146	304 769
Current taxes on income, wealth, etc.	521 407	531 300	551 664
Social security contributions	33 971	35 114	34 495
Other current transfers	14 780	17 238	15 103
Capital outlays, total	51 809	60 736	85 890
Non-financial capital accumulation	37 916	38 497	45 223
Capital transfers	13 893	22 239	40 667
Capital revenue, total	9 429	15 140	9 629
Capital taxes	3 779	4 694	3 855
Other capital transfers	5 650	10 446	5 775
Current surplus (gross saving)	-5 022	10 656	854
Overall surplus (net lending)	-47 402	-34 939	-75 407

www.statbank.dk/off3 and off16

Table 292 Expenditure and revenue of general government by sub-sector. 2012*

	Central government	Social security funds	Local government	General government ¹
	DKK mio.			
Current outlays, total	781 473	57 612	647 107	993 727
Compensation of employees	94 589	2 355	237 975	334 918
Intermediate consumption	64 639	797	115 414	180 850
Other taxes on production and other subsidies on production, net	742	1	-5 807	-5 064
Social benefits in kind	442	-	27 340	27 782
Real interest, etc.	33 460	-	2 933	36 393
Subsidies	23 371	-	24 380	47 751
Other current transfers	564 229	54 459	244 873	371 096
Current revenue, total	725 055	89 425	672 566	994 580
Sales of goods and services	23 326	9	30 541	53 877
Income on wealth, earned income, etc.	30 098	63	4 512	34 672
Taxes on production and import	279 704	-	25 065	304 769
Current taxes on income, wealth, etc.	344 836	-	206 828	551 664
Social security contributions	7 263	16 833	10 399	34 495
Other current transfers	39 827	72 520	395 221	15 103
Capital outlays, total	25 434	31 001	29 565	85 890
Non-financial capital accumulation	17 168	6	28 049	45 223
Capital transfers	8 266	30 994	1 516	40 667
Capital revenue, total	7 664	-	2 075	9 629
Capital taxes	3 854	-	-	3 855
Other capital transfers	3 809	-	2 075	5 775
Current surplus (gross saving)	-56 418	31 813	25 459	854
Overall surplus (net lending)	-74 189	812	-2 030	-75 407

¹ Consolidated, i.e. excluding internal general government transfers.

www.statbank.dk/off3



Table 293 Expenditure and revenue of general government

	2010*	2011*	2012*
	DKK mio.		
Central government			
Current outlays	714 654	730 840	781 473
Capital outlays	24 803	30 923	25 434
Current revenue	687 656	712 274	725 055
Capital revenue	7 220	13 136	7 664
Current surplus	-26 998	-18 565	-56 418
Overall surplus	-44 581	36 352	-74 189
Social security funds			
Current outlays	60 366	59 039	57 612
Capital outlays	2 551	2 682	31 001
Current revenue	63 283	62 382	89 425
Capital revenue	-	-	-
Current surplus	2 917	3 343	31 813
Overall surplus	366	662	812
Local governments, total¹			
Current outlays	621 900	630 815	647 107
Capital outlays	24 665	27 217	29 565
Current revenue	640 960	656 694	672 566
Capital revenue	2 418	2 090	2 075
Current surplus	19 059	25 879	25 459
Overall surplus	-3 187	752	-2 030
Of which:			
Counties			
Current outlays	115 171	115 015	118 492
Capital outlays	5 395	6 266	7 555
Current revenue	119 722	122 124	123 266
Capital revenue	310	230	202
Current surplus	4 551	7 110	4 774
Overall surplus	-535	1 074	-2 579
Municipalities			
Current outlays	530 694	539 996	552 012
Capital outlays	19 270	20 950	22 009
Current revenue	545 203	558 765	572 697
Capital revenue	2 109	1 859	1 873
Current surplus	14 509	18 769	20 685
Overall surplus	-2 652	-322	549

¹ Consolidated, i.e. excluding internal general-government transfers.



Table 294 Expenditure of general government sector by type of transaction

	2011*	2012*	2013*
	mio. kr.		
Total outlays	1 028 785	1 079 617	1 070 276
Current outlays, total	968 049	993 727	1 014 274
Compensation of employees	330 458	334 918	339 055
Intermediate consumption	174 848	180 850	184 830
Other taxes on production and other subsidies on production, net	-4 642	-5 064	-5 680
Social benefits in kind	27 423	27 782	28 084
Income transfers, total	439 962	455 240	467 985
Interest, etc.	37 581	36 393	33 360
+Subsidies	45 652	47 751	50 442
To public quasi-corporations	13 340	14 386	14 190
To other corporations	32 312	33 365	36 253
+Other income transfers	356 729	371 096	384 183
To other levels of government	0	0	0
To households	312 317	322 313	335 763
To NPIHs ¹	6 053	6 585	6 292
To the rest of the world (a-d)	38 359	42 198	42 128
a. To the Faroe Islands, net	742	751	818
b. To Greenland, net	3 836	3 933	4 130
c. To the EU	16 385	18 245	17 890
d. To others	17 396	19 268	19 289
Capital outlays, total	60 736	85 890	56 002
Non-financial capital accumulation, total	38 497	45 223	41 762
Acquisition of new fixed assets	39 955	43 404	42 544
+Acquisition of buildings, and other existing investments, net	-1 339	1 597	-582
+Changes in inventories	0	0	..
+Acquisition of land and intangible assets, net	-119	221	-200
Capital transfers, total	22 239	40 667	14 240
Investment grants and capital transfers	22 239	40 667	14 240
To public quasi-corporations	1 995	2 979	5 725
To other enterprises	14 433	4 197	3 681
To other levels of government	0	0	0
To households	5 403	33 104	4 493
To NPIHs ¹	282	309	286
To the rest of the world (a-d)	127	78	55
a. To the Faroe Islands, net	0	-15	..
b. To Greenland, net	25	8	3
c. To the EU	0	0	0
d. To others	101	85	51

¹ To non-profit institutions (households).



Table 295 Revenue of general government sector, by type of transaction

	2011*	2012*	2013*
	DKK mio.		
Current plus capital revenue	993 846	1 004 209	1 023 385
Current revenue, total	978 706	994 580	1 011 768
Sales of goods and services	54 243	53 877	50 647
Withdrawals of income from quasi-corporations	1 110	1 287	853
Interest	29 111	28 095	29 522
Rents	9 444	5 290	610
Taxes on production and imports	301 146	304 769	318 118
Current taxes on income, wealth, etc.	531 300	551 664	561 711
Compulsory social security contributions	18 108	16 956	16 600
Voluntary social contributions	685	668	637
Imputed social contributions	16 321	16 871	17 207
Other income transfers	17 238	15 103	15 864
From other levels of government	0	0	0
From domestic private sector	14 721	12 916	13 471
From the rest of the world	2 518	2 187	2 393
From EU institutions	1 734	1 337	1 518
From others	784	851	874
Capital revenue, total	15 140	9 629	11 616
Capital taxes	4 694	3 855	6 000
Other capital transfers	10 446	5 775	5 616
From other levels of government	0	0	0
From domestic private sector	10 201	5 463	5 281
From the rest of the world	245	311	336
From EU institutions	244	310	334
From others	1	1	0
Current surplus (gross saving)	10 656	854	-2 506
Overall surplus (net lending)¹	-34 939	-75 407	-46 891

¹ Current and capital surplus = change in net debt.

www.statbank.dk/off3 and [off16](http://www.statbank.dk/off16)

Table 296 Consumption expenditure of general government sector

	2011*	2012*	2013*
	DKK mio.		
Consumption expenditure (1+2+3)	508 122	520 110	531 937
1. Production	534 942	546 204	554 500
Compensation of employees	330 458	334 918	339 055
Consumption of fixed capital	34 278	35 500	36 295
Intermediate consumption	174 848	180 850	184 830
Other taxes on production and other			
Subsidies on production, net	-4 642	-5 064	-5 680
2. Social benefits in kind	27 423	27 782	28 084
3. Sales of goods and services	-54 243	-53 877	-50 647

www.statbank.dk/off26 and [off28](http://www.statbank.dk/off28)


Table 297 Expenditure of general government sector by function

Expenditure	2010	2011	2012
	DKK mio.		
Total	1 011 926	1 028 785	1 079 617
1. General public services	136 733	143 915	167 107
1.1 Executive and legislative organs, financial and fiscal affairs, external affairs	32 280	39 157	31 729
1.2 Foreign economic aid	18 911	18 088	18 827
1.3 General services	5 071	4 572	6 751
1.4 Basic research and R&D general public services	15 619	16 322	16 321
1.5 General public services etc.	22 588	22 118	50 944
1.6 Public debt transactions and transfers of a general character between different levels of government	42 265	43 658	42 534
2. Defence	25 410	24 746	27 306
2.1 Military defence etc.	24 455	23 829	26 473
2.2 Civil defence	955	917	833
3. Public order and safety	19 683	20 323	20 366
3.1 Police services	10 561	10 715	10 919
3.2 Fire protection services	1 764	1 762	1 790
3.3 Law courts	3 652	4 130	3 724
3.4 Prisons	3 393	3 375	3 457
3.5 Public order and safety etc.	314	341	476
4. Economic affairs	58 781	62 144	66 199
4.1 General economic, commercial and labour affairs	17 152	18 565	18 893
4.2 Agriculture, forestry, fishing and hunting	2 401	2 935	2 946
4.3 Fuel and energy	942	653	265
4.4 Mining, manufacturing and construction	165	118	168
4.5 Transport, communication, other industries	37 227	37 992	41 664
4.6 R&D Economic affairs	463	1 332	1 405
4.7 Economic affairs etc.	431	550	858
5. Environmental protection	7 430	7 066	8 280
5.1 Waste and waste water management, pollution abatement	1 679	1 731	2 370
5.2 Protection of biodiversity and landscape	2 897	2 884	3 371
5.3 Environmental protection etc.	2 854	2 451	2 538
6. Housing and community amenities	6 384	6 060	6 560
6.1 Housing development	5 923	5 841	6 149
6.2 Housing and community amenities etc.	461	219	411
7. Health	146 114	147 303	152 263
7.1 Medical products, appliances and equipment	8 868	8 473	8 129
7.2 Outpatient services	23 629	24 245	25 266
7.3 Hospital services	108 878	109 860	114 102
7.4 R&D Health	109	152	78
7.5 Health etc.	4 629	4 573	4 688
8. Recreation, culture and religion	28 571	28 496	29 340
8.1 Recreational and sporting services	7 652	7 475	7 517
8.2 Cultural services	11 726	11 916	12 602
8.3 Religious and other community services	8 301	8 369	8 428
8.4 Recreation, culture and religion etc.	893	736	794
9. Education	139 079	137 785	142 676
9.1 Primary education	68 946	69 409	70 768
9.2 Youth-level education	30 967	30 374	32 086
9.3 Higher education	25 072	26 688	29 356
9.4 Adult and supplementary education	9 583	7 093	6 503
9.5 Education etc.	4 512	4 221	3 963
10. Social protection	443 740	450 948	459 520
10.1 Sickness and disability	105 013	104 419	105 182
10.2 Old age	135 714	142 785	149 692
10.3 Family and children	96 323	93 871	92 797
10.4 Unemployment	59 917	60 965	60 838
10.5 Housing	12 224	12 740	13 221
10.6 Social exclusion n.e.c.	24 245	26 032	27 436
10.7 Social protection etc.	10 303	10 135	10 354



Table 298 Expenditure of general government and its subsectors by function. 2012*

Expenditure	Central government	Social security funds	Counties	Municipalities	Transfers within general government sector	General government sector
Total	806 907	88 613	126 048	574 021	515 972	1079 617
1. General public services	321 028	28 496	832	42 987	226 237	167 107
1.1 Executive and legislative organs, financial and fiscal affairs, ext. affairs	32 507	-	-	- 777	0	31 729
1.2 Foreign economic aid	18 828	-	-	72	73	18 827
1.3 General services	6 751	-	-	-	0	6 751
1.4 Basic research and R & D general public services	16 293	-	10	43	25	16 321
1.5 General public services etc.	541	28 494	234	21 912	237	50 944
1.6 Public debt transactions and transfers between diff. levels of govern.	246 108	2	588	21 737	225 902	42 534
2. Defence	27 030	-	-	277	0	27 306
2.1 Military defence etc.	26 473	-	-	-	0	26 473
2.2 Civil defence	556	-	-	277	0	833
3. Public order and safety	18 576	-	-	1 790	0	20 366
3.1 Police services	10 919	-	-	-	0	10 919
3.2 Fire protection services	0	-	-	1 790	0	1 790
3.3 Law courts	3 724	-	-	-	0	3 724
3.4 Prisons	3 457	-	-	-	0	3 457
3.5 Public order and safety etc.	476	-	-	-	0	476
4. Economic affairs	39 241	-	2 678	24 558	278	66 199
4.1 General economic, commercial and labour affairs	11 926	-	474	6 610	117	18 893
4.2 Agriculture, forestry, fishing and hunting	2 946	-	-	-	0	2 946
4.3 Fuel and energy	153	-	-	112	0	265
4.4 Mining, manufacturing and construction	150	-	12	6	0	168
4.5 Transport, communication, other industries	22 291	-	1 709	17 825	161	41 664
4.6 R & D Economic affairs	1 405	-	-	-	0	1 405
4.7 Economic affairs etc.	371	-	483	5	0	858
5. Environmental protection	4 220	-	429	3 666	35	8 280
5.1 Waste and waste water management, pollution abatement	1 462	-	429	493	14	2 370
5.2 Protection of biodiversity and landscape	1 990	-	-	1 395	14	3 371
5.3 Environmental protection etc.	767	-	-	1 778	7	2 538
6. Housing and community amenities	2 858	-	0	3 989	287	6 560
6.1 Housing development	2 447	-	0	3 989	287	6 149
6.2 Housing and community amenities etc.	411	-	-	-	0	411
7. Health	2 856	-	114 837	35 448	878	152 263
7.1 Medical products, appliances and equipment	377	-	6 796	1 314	358	8 129
7.2 Outpatient services	547	-	14 876	9 918	75	25 266
7.3 Hospital services	472	-	90 087	23 975	432	114 102
7.4 R & D Health	78	-	0	12	12	78
7.5 Health etc.	1 382	-	3 078	230	1	4 688
8. Recreation, culture and religion	14 749	-	61	15 243	713	29 340
8.1 Recreational and sporting services	832	-	-	6 696	11	7 517
8.2 Cultural services	5 077	-	61	8 151	687	12 602
8.3 Religious and other community services	8 047	-	-	396	15	8 428
8.4 Recreation, culture and religion etc.	794	-	-	-	0	794
9. Education	80 661	116	99	66 770	4 970	142 676
9.1 Primary education	12 691	-	0	62 160	4 083	70 768
9.2 Youth-level education	32 151	-	0	86	150	32 086
9.3 Higher education	29 488	-	15	- 132	15	29 356
9.4 Adult and supplementary education	4 714	116	0	2 374	701	6 503
9.5 Education etc.	1 618	-	83	2 282	21	3 963
10. Social protection	295 687	60 001	7 112	379 293	282 573	459 520
10.1 Sickness and disability	34 740	-	2 988	103 232	35 778	105 182
10.2 Old age	131 598	-	2 349	125 771	110 026	149 692
10.3 Family and children	28 258	-	1 311	77 585	14 357	92 797
10.4 Unemployment	78 746	59 158	-	27 044	104 110	60 838
10.5 Housing	8 846	-	-	13 187	8 812	13 221
10.6 Social exclusion n.e.c.	12 033	746	151	23 903	9 398	27 436
10.7 Social protection etc.	1 467	97	312	8 570	92	10 354



Table 299

Subsidies

	2011*	2012*
	DKK mio.	
Subsidies, total	52 957	55 139
Analysed by recipients:		
Subsidies to public quasi corporations	13 340	14 386
Subsidies to other enterprises	31 987	32 633
Subsidies to EU schemes	7 630	8 120
Analysed by kind and scheme:		
1. Subsidies on products, total	15 027	16 087
a. EU schemes, total	140	147
Of which: Export subsidy schemes	29	12
Other EU schemes	112	135
b. Danish schemes, total	14 887	15 940
Of which: Railways	8 255	8 809
Local government buses, etc.	3 261	3 354
2. Other subsidies on production, total	37 930	39 052
a. EU schemes, total	7 490	7 973
b. Danish schemes, total	30 440	31 079
Of which: Interest subsidies	3 217	2 183
Other private enterprises	19 743	20 675
Analysed by source of finance:		
a. EU schemes, total	7 630	8 120
EU share of EU schemes, total	7 305	7 388
Danish share of EU schemes, total	325	732
b. Danish schemes, total	45 327	47 019
c. Financed by Denmark, total	45 652	47 751



Table 300 Current transfers to households from the general government sector

	2011*	2012*
	DKK mio.	
Current transfers, total	312 317	322 313
Social benefits other than social transfers in kind	305 739	314 894
Civil servants' pensions	22 599	23 484
Old-age and early retirement pensions	100 191	105 673
Higher and mid-early retirement pensions	40 983	41 683
Personal allowance	1 435	1 447
Special pension schemes	200	201
Early retirement pay	20 281	19 158
Unemployment benefit	18 929	20 067
Cash benefits under the Social Assistance Act	14 485	16 134
Gross rehabilitation benefit	2 426	2 053
Sickness and maternity benefit	24 561	23 261
Funeral benefit	135	141
Child and youth allowances	4 078	3 952
Sabbatical leave, child care	17	53
Subsidies to free seat in day-care institutions	2 579	2 602
Family allowance	14 517	14 548
Compensations and presentations to victims of the occupation	330	297
Housing subsidies	12 701	13 180
Compensation for lost earnings	753	597
The Employees' Guarantee Fund	759	746
Education grants	16 169	17 778
Education benefit as substitution for employment quotation	3 627	3 646
Other transfers	3 983	4 193
Other current transfers, total	6 577	7 419
Transportation	1 198	1 653
Indexation	1 530	1 609
Free process and legal aid	451	437
Other transfers	3 398	3 719

www.statbank.dk/off10 and off10B



Table 301	Total taxation	
	2011 *	2012 *
	DKK mio.	
Total taxation	858 459	880 244
Distribution by type of tax:		
Income taxes, total	523 226	543 464
Personal income tax	435 373	445 759
State income tax	126 779	132 593
Municipality income tax	198 742	202 108
Church tax	5 741	6 057
Special contribution to labour market funds	81 083	81 687
Tax on imp. income from owner-occupied dwelling	12 822	12 997
Other personal income taxes	10 187	10 318
Corporation tax	49 778	55 503
Real interest tax	38 076	42 202
Compulsory contrib. to social-security schemes	18 108	16 956
Social contributions from employees	17 117	16 210
Social contributions from employers	991	746
Other labour market contributions	4 635	5 722
Labour market contributions from employers	4 635	5 722
Taxes on wealth, real property, etc.	40 109	39 238
Inheritance tax and gift tax	4 694	3 854
Motor vehicle weight duty	10 396	10 563
Taxes on real property	25 018	24 821
Property release and surrender tax	0	0
Taxes on goods and services	272 229	274 712
VAT	177 842	181 601
Tax on wage totals	5 761	5 905
Customs and import duties	3 177	2 967
Taxes on specific goods	74 139	74 717
Vehicle registration duty	13 563	13 034
Energy taxes	42 040	40 574
Pollution duties	2 286	2 070
Tobacco duties	7 495	8 248
Duties on beer, wine and spirits	3 123	3 660
Other taxes on specific goods	5 633	7 132
Taxes on specific transactions	5 142	4 917
Stamp duty	5 060	4 890
Other taxes on specific transactions	82	27
Taxes on specific services	6 014	4 553
Turnover tax on football pools etc.	1 095	79
Tax on insurance of vehicles and leisure craft	1 854	1 838
Other taxes on specific services	3 065	2 637
Other duties	152	51
Other production taxes	151	152
Distribution by receiving sub-sector		
Central government	609 029	628 407
Social security funds	17 905	16 833
Municipalities	228 314	232 003
Supranational authorities (EU)	3 211	3 000

www.statbank.dk/off12



Table 302 Taxation by national accounts distribution

	2011*	2012*
	DKK mio.	
Total taxation	858 459	880 244
National accounts distribution:		
Danish schemes		
Taxes on production and imports	301 146	304 769
Current taxes on income, wealth etc.	531 300	551 664
Social contributions	18 108	16 956
Capital taxes	4 694	3 855
EU schemes		
Taxes on production and imports	3 211	3 000
	per cent	
Tax incidence¹, total	47.9	48.4
Taxes on production and imports	17.0	16.9
Current taxes on income, wealth, etc.	29.7	30.3
Compulsory contribution to social security	1.0	0.9
Taxes on capital	0.3	0.2

¹ Taxes and duties in percentage of gross domestic product.

www.statbank.dk/off12

Table 303 Bilateral official assistance to developing countries. 2011*

	Project and programme assistance	NGO assistance	Other bilateral assistance	Total		Project and programme assistance	NGO assistance	Other bilateral assistance	Total
	DKK mio.					DKK mio.			
Total	7 216.8	981.9	1 783.4	11 577.3	Nepal	142.6	31.7	3.4	177.7
Africa	4 051.5	541.6	590.3	5 183.4	Mali	163.8	6.4	0.2	170.4
Asia	1 692.0	177.9	380.9	2 250.8	Zimbabwe	134.8	23.6	-	158.4
Latin America	416.5	96.0	0.5	513.0	Indonesia	44.0	7.8	73.5	125.3
Europe	5.1	0.3	132.2	137.6	Ethiopia	32.3	29.4	55.6	117.3
None-country-specific	1 051.7	166.1	679.3	1 897.1	Gaza/West Bank	99.2	13.1	2.6	114.9
Africa	813.7	196.6	218.0	1 228.3	Latin America	61.4	52.2	0.6	114.2
Tanzania	595.9	32.1	48.3	676.3	Pakistan	69.5	4.5	21.6	95.6
Mozambique	549.2	45.6	10.1	604.9	Bhutan	67.6	1.1	-0.8	67.9
Asia	254.4	49.9	195.0	499.3	Burma (Myanmar)	55.1	3.5	0.8	59.4
Afghanistan	425.9	7.7	4.7	438.3	Cambodia	7.7	17.2	26.7	51.6
Kenya	286.4	31.6	76.0	394.0	Ukraine	0.2	-	50.2	50.4
Ghana	344.1	39.4	0.9	384.4	Niger	34.1	12.0	1.0	47.1
Uganda	255.9	93.1	16.6	365.6	Kosovo	0.8	-	26.7	27.5
Bangladesh	292.1	15.5	5.3	312.9	Serbia	-	-	12.0	12.0
Vietnam	233.9	25.9	48.2	308.0	Moldova	-	0.3	9.4	9.7
Burkina Faso	227.4	-	0.8	228.2	Belarus	0.1	-	9.1	9.2
Zambia	200.8	21.4	1.8	224.0	Albania	0.1	-	7.6	7.7
Bolivia	190.7	20.8	-0.1	211.4	Countries under the NAB program	-	-	5.0	5.0
Somalia	103.3	5.0	90.6	198.9	Turkey	-	-	4.4	4.4
Benin	193.9	-	0.3	194.2	Montenegro	-	-	4.3	4.3
South Sudan	120.0	5.5	66.3	191.8	Balkans	4.0	-	-	4.0
Nicaragua	164.6	23.0	-	187.6	Central- and East Europe	-	-	2.7	2.7

Source: Danish Ministry of Foreign Affairs, Department of International Development Co-operation (DANIDA)



Table 304 Danish official assistance to developing countries

	2010	2011
	DKK mio.	
Total official assistance	13 228	13 054
Bilateral assistance, total	10 058	9 988
Programme and project assistance		
Africa	2 866	3 442
Asia	1 225	1 319
Latin America	393	388
Personnel assistance	373	355
Danida Business Partnership	207	268
Danida Business Finance	375	350
Loan assistance, debt relief	257	6
Regional areas and region-of-origin assistance	38	21
Human rights and democratisation	619	506
Neighbourhood Programme	157	191
Assistance through NGOs	1 109	982
Special environmental assistance for developing countries	638	495
Research and information activity in Denmark	243	252
Extraordinary humanitarian contributions and IHB	1 008	709
International development research ⁱ	12	20
UN Development Programme (UNDP) ¹	3	22
HIV/AIDS, population and health programmes ¹	183	152
Global environment programmes ¹	118	129
Other UN assistance programmes ¹	49	25
World Bank Group ¹	144	270
Regional and other development funds ¹	8	66
International human rights organisations ¹	14	0
Multilateral humanitarian assistance ¹	20	20
Multilateral assistance, total	3 170	3 066
Human rights and democratisation ⁱⁱ	10	8
Special environmental assistance to developing countries ²	80	0
Extraordinary humanitarian contributions and IHB	14	30
International development research	36	41
UN Development Programme (UNDP)	354	363
UN Children's Fund (UNICEF)	183	178
HIV/AIDS, population and health programmes	517	475
UN Agriculture and Food Programme	55	25
Global environment programmes	128	125
Other UN assistance programmes	65	51
World Bank Group	478	436
Regional banks	108	79
Regional and other development funds	282	306
Assistance through the European Development Fund	420	479
Multilateral humanitarian assistance	440	470

¹ Upto and including the Annual Report for 2010, these main categories were regarded as multilateral assistance. For 2011 onwards, the activities which according to OECD guidelines are to be reported as bilateral will be extracted: core contributions to international NGOs and earmarked contributions to projects and programmes that are implemented by multilateral organisations. In these categories the principles from 2011 have also been used for the 2010 figures. ² Upto and including the Annual Report for 2010, these main areas were calculated as bilateral assistance. For 2011 onwards, the activities which according to OECD guidelines are to be reported as multilateral will be extracted: core contributions to multilateral organisations. In these categories the principles from 2011 have also been used for the 2010 figures.

Source: Danish Ministry of Foreign Affairs, DANIDA